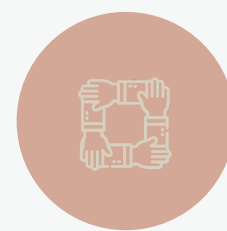


we-ving

WE-ving, a compound word consisting of the words "we" and "living", is a new type of a sustainable home that allows the Navajo textile artist to live, create, work, and socialize while addressing health and safety measures in response to the ongoing pandemic. Inspired by the act of weaving different colors of threads to create a completed textile, WE-ving deals with the concept of weaving at 3 different scales.

- 1) Three main functions (living, gathering, and working) are woven together for the Navajo textile artist to sustain business and livelihood in one connected space.
- 2) The activities of people both in an online and offline environment are woven to socially connect the artist, guests, customers while addressing pandemic-related safety issues as well.
- 3) The local community and WE-ving are woven in a way that can flourish local culture.

GOALS



COMMUNITY
To connect and ensure the safety of the local community



FLEXIBILITY
To connect working space and living space



SUSTAINABILITY
To connect and incorporate space design with sustainable values



CULTURE
To connect Navajo and Indigenous American Culture with people



The showroom is designed to resemble the look and feel of a museum or a gallery. The reason behind this consideration is that our team believes a showroom is not just a place to buy items but should be a place where customers can fully understand the process and the value of handcrafted items. So we focus on designing the showroom as a place where passersby or customers can have a look and appreciate the beauty behind the appearance of Navajo textiles.



SITE RATIONAL



DOWNTOWN FLAGSTAFF, AZ, USA
35.13° NORTH, 111.67° WEST

Climate:
Semi-arid mild weather all-year-around

Amenities:
Navajo arts & culture, Arizona Daily Sun, walkable downtown, Views of Wheeler Park, Accessible to tourists

Surrounded by the Navajo Nation and nearby the Native American Pueblo sites, Flagstaff has a high volume of people who are involved in the Navajo community. Therefore, it will provide the Navajo textile artist with ample opportunity to expand the business and to attract new customers. Various events related to Navajo arts & culture will allow the artist to get inspirations for future works from other local artists. This interaction fits into our concept of weaving -connecting the local community with the Navajo artist and connecting customers and the artist through intimate interactions.

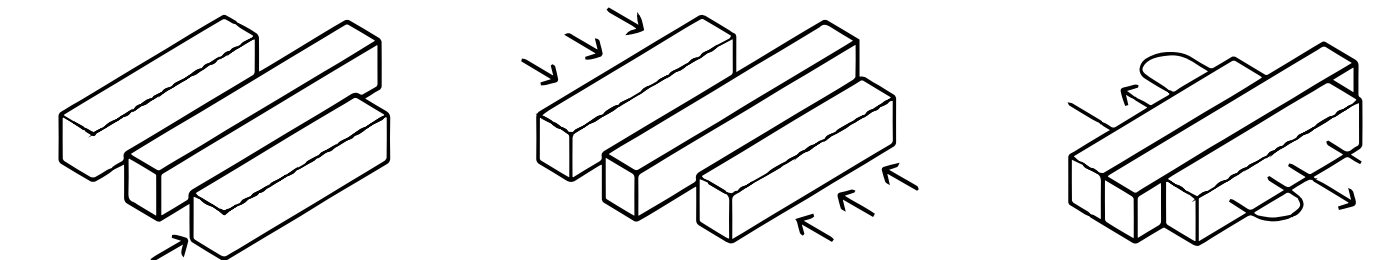
DESIGN RATIONALE

The quality of a completed textile is dependent on the structure of the weave. WE-ving recognizes the need to look beyond the surface appearance during the process of designing.

In traditional Navajo weaving, warp and weft refer to the orientation of a woven fabric. "The warp refers to the threads that run the length of the fabric, forming the longer dimension of the fabric...weft refers to the threads that are pulled and inserted perpendicularly or diagonally to the warp yarns across the width of the fabric" (Ayers, 2016).

Analogy of warp and weft are taken into consideration to deal with the concept of weaving. Three shipping containers represent warps, forming not only the longer dimension but also the outer boundary of the space. The circulations and the user-space interactions of the Navajo textile artist, guests, and customers are all considered as weft, as they move from one space to another perpendicularly and diagonally to the direction of containers (warps).

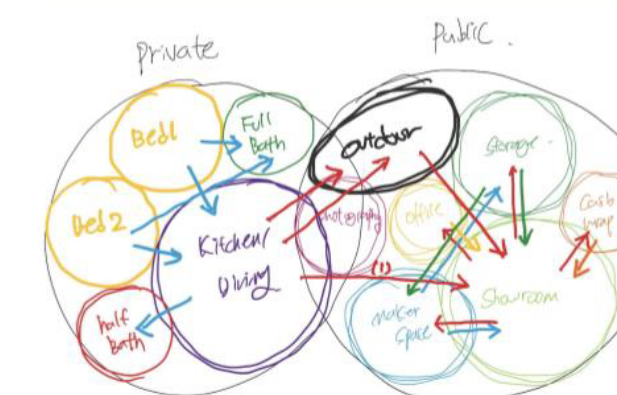
Then, the spaces within follow the above-mentioned analogy and concept of weaving to socially connect the artists, guests, customers, and even local community. Connecting 3 containers side by side and opening up some spaces to others provide an opportunity to enlarge functionally significant spaces, to design multipurpose spaces depending on the user's needs, and to eliminate hallways within WE-ving.



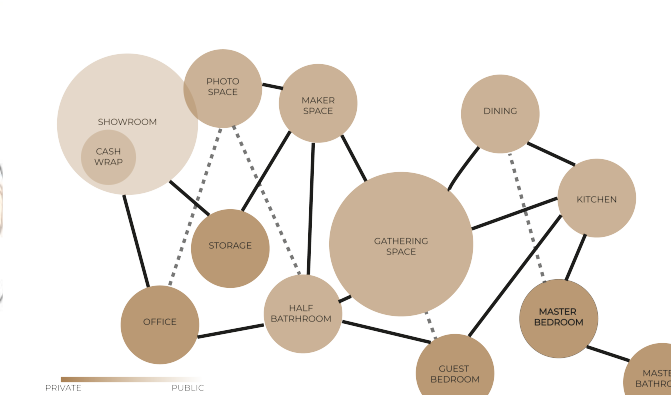
While different spaces are visually, physically connected and the Navajo textile artist is socially connected to guests, customers, and local community, considering health and safety measures is also an important part of design as the response to the current pandemic. WE-ving has two separate entrances - one for customers and the other for the artist and guests. Separating entrances prevents passersby/customers from not only looking inside but also entering the artist's private living area. Moreover, separating the showroom from other public-facing spaces (such as back office and makerspace) allows the artist to minimize the unwanted interactions and encounters with customers, if additional health/safety measures are necessary.

PLANNING PROCESS

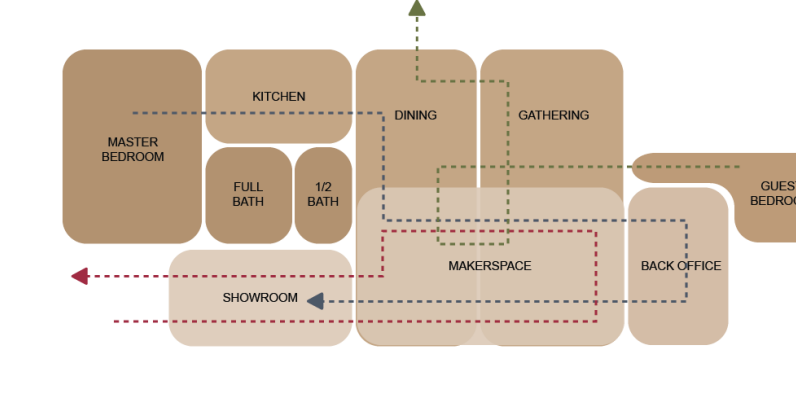
Bubble Diagram



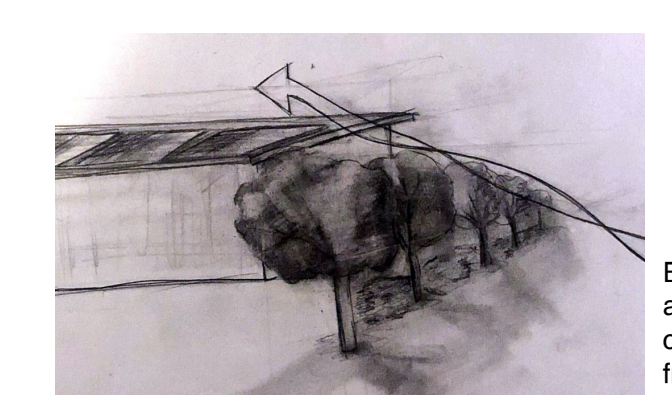
Adjacency Diagram



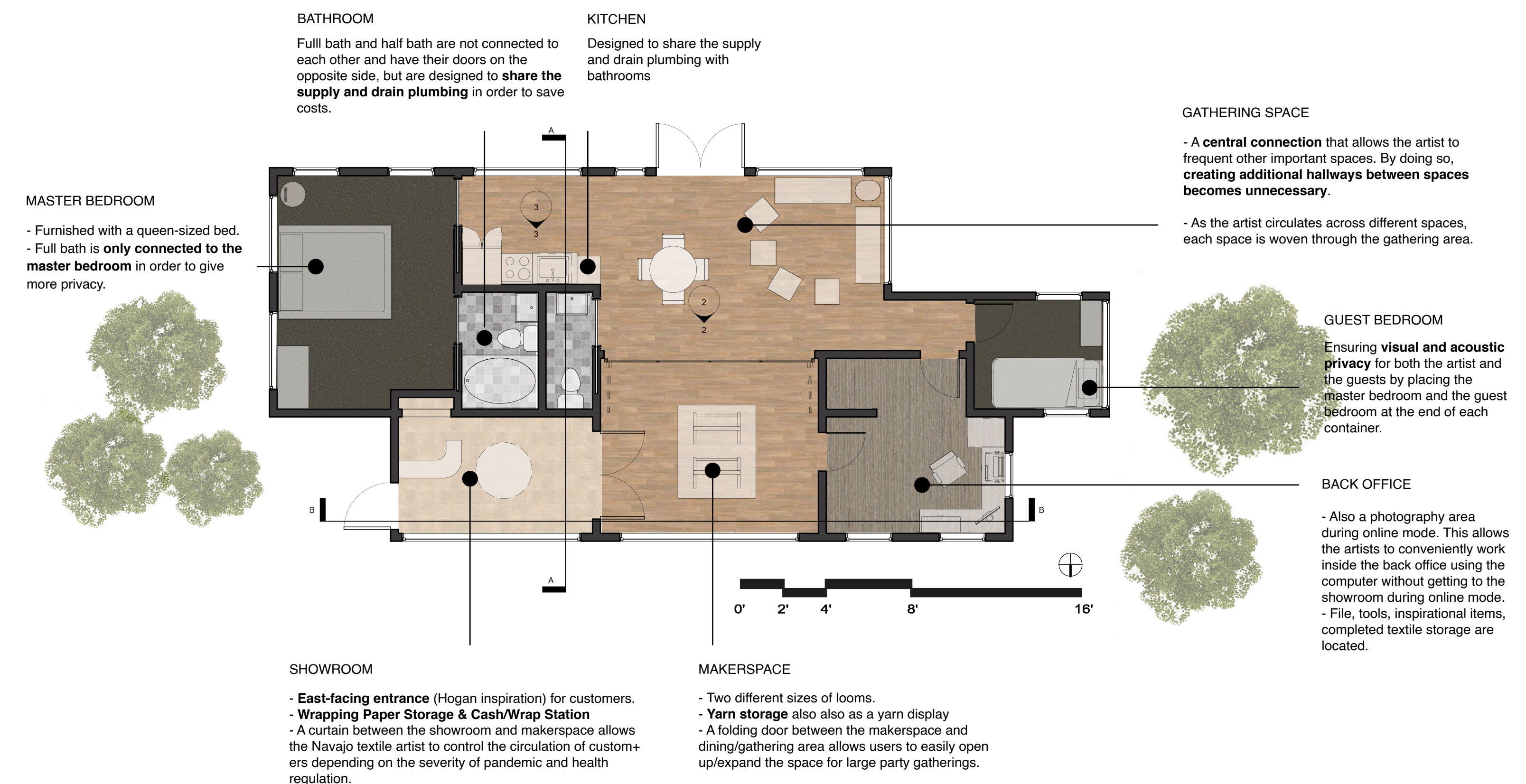
Circulation Diagram



Landscape Concept Drawing



Exterior windshields and dense planting can protect entries from cold winter winds



POST PANDEMIC DESIGN SOLUTIONS

- FLEXIBLE LAYOUT**
Instead of making permanent changes, allow for things to be easily modified when consumer demand takes a different turn.
- CIRCULATION CONTROL**
Separating circulations for different user groups, creating one-way aisle to minimize encounters, and providing users with ability to control circulation, if necessary.
- AVOIDING OPEN FLOORPLAN**
Instead of a collective living environment, create a cluster of isolated zones with clear boundaries between spaces.
- BIOPHILIC CONTENTS**
Incorporating biophilic contents using natural elements in residential space as people spend much more time in indoor spaces than ever before.
- MATERIALS**
Materials with smooth surfaces such as stainless steel or plastic are riskier since the virus can survive up to seven days, while the virus survives less than three days on materials with porous surfaces like paper, clothing, and wood.

MATERIAL RATIONALE

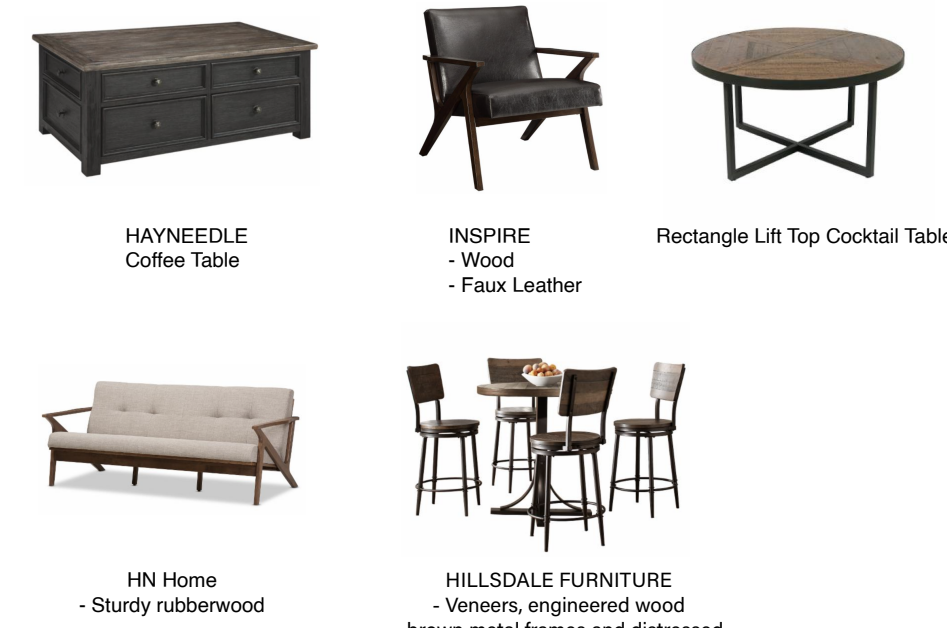
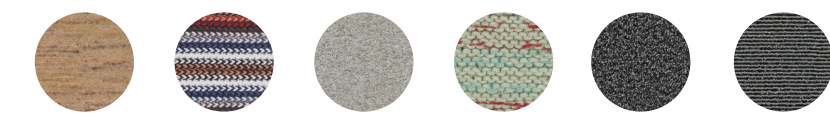
Materials with smooth surfaces such as stainless steel or plastic are riskier since the virus can survive up to seven days, while the virus survives less than three days on materials with porous surfaces like paper, clothing, and wood.

MATERIALS AND FURNITURE

WOOD



CARPET & PATTERNED FABRIC



OPENING ON THE CEILING
- Inspired by the design of Navajo traditional living.
- Allows the flow of sunlight during the day and entails the philosophy underlying the design of Hogan. For the Navajo people, opening on the top was not merely a ventilation but has a symbolic meaning to connect the sun and Mother Earth as well.



FLEXIBLE SPACE USAGE
- Depending on the severity of pandemic and different functional needs of users, this space can be either separated into two different spaces or connected as one opened up space.
- Closing the folding door provides the artist with minimized interaction with others and clear separation between working and living spaces.
- Opening the folding door allows the artist to accommodate more than 8-10 guests.

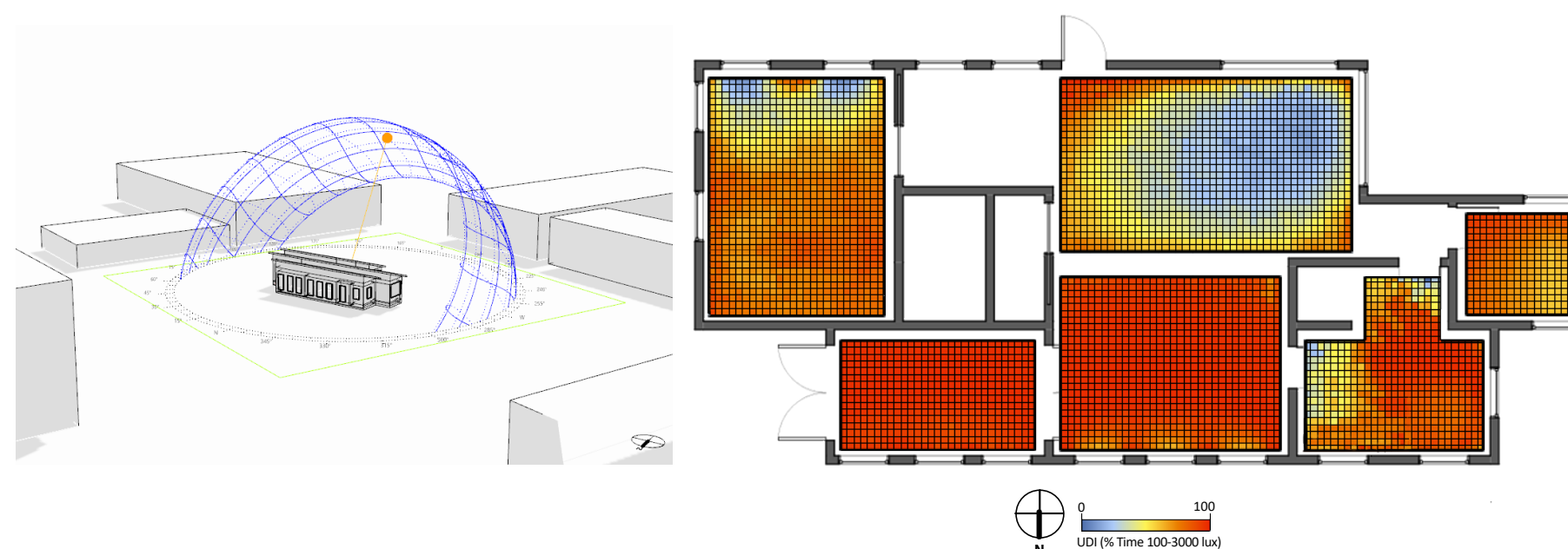


FOLDABLE DINING TABLE
Efficiently save space and accommodate large party gatherings.

SUN STUDY



As it is illustrated in the diagram, our team found out that most of the North-facing spaces efficiently utilize daylight (Nearly 100% of daylight across these spaces), although South-facing spaces are less efficient in bringing in daylight. Based on this result, our team decided to put commercial / working space (the showroom, makerspace, and office) - where users spend most of the daytime - in areas that efficiently bring in daylight. For areas that are less efficient in bringing in daylight, our team decided to design a living space where users spend most of their night time after work.



RESEARCH



HOGAN
Hogan is a Navajo traditional dwelling characterized by several design aspects and underlying philosophy. Traditional Hogan is a circular, dome-shaped one-room dwelling made of natural materials such as wooden poles, tree bark, and mud. Metaphorically, "the domed top represents a woman's pregnancy, and Navajo people are nurtured by Mother Nature in the womb" (Krol, 2018). It only has one entrance facing East so they could get the morning sun as well as good blessings. Additionally, there is no other opening in the Hogan except for a hole on the roof for ventilation.



HEALTH AND SAFETY MEASURES
According to World Happiness Report 2021, "increases in loneliness from before to during the pandemic were associated with decreases in life satisfaction among the U.S." (World Happiness Report 2021). It also states that having poor social support was associated with severe depressive symptoms. In response to this mental health issue related to the current pandemic, WE-ving is designed to facilitate social connection while addressing physical distancing within the space.

COMMERCIAL SPACE RENDERED PERSPECTIVES



Makerspace

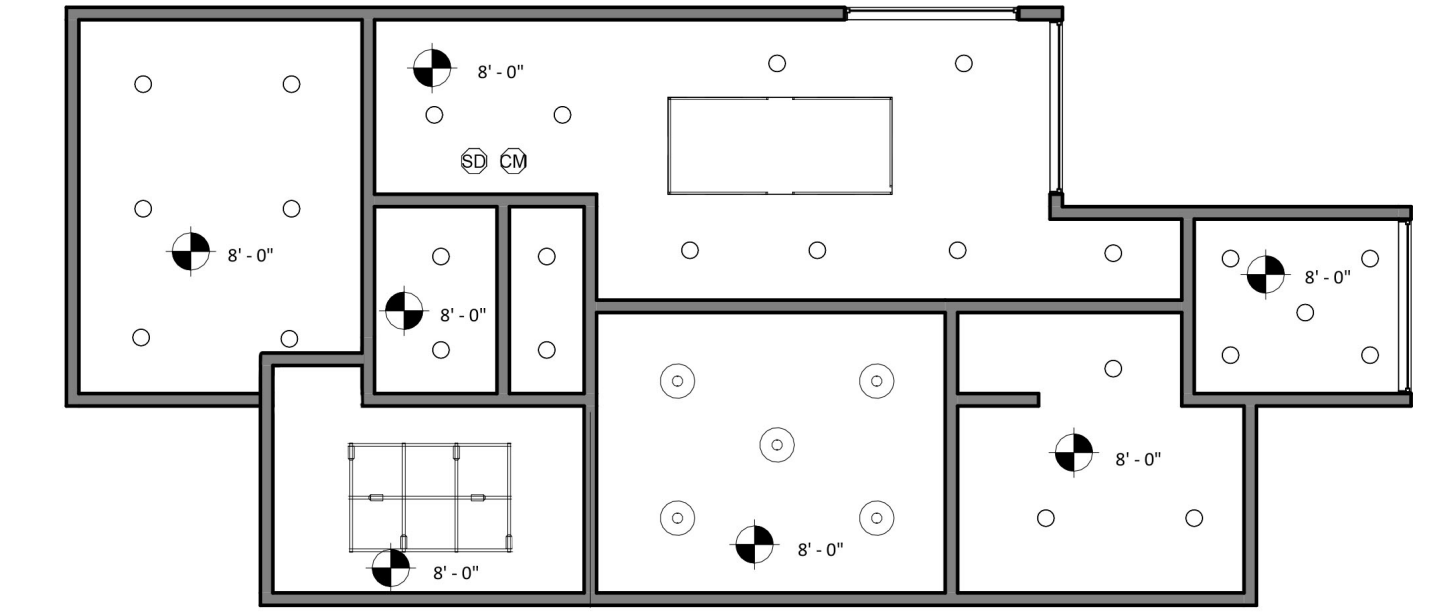


Office



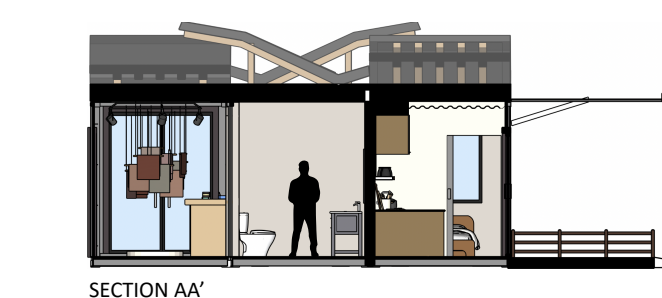
Showroom

REFLECTED CEILING PLAN

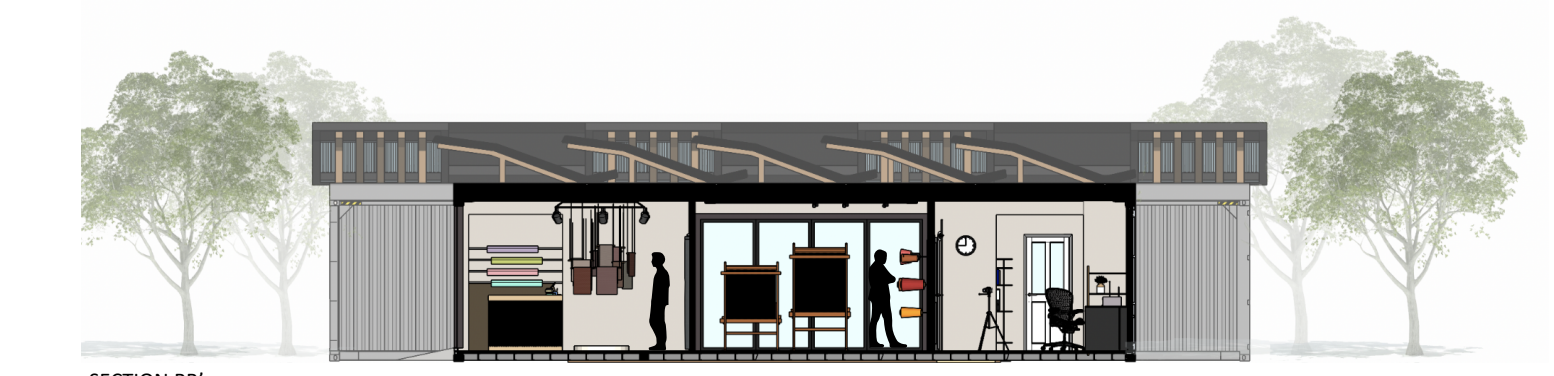


REFLECTED CEILING PLAN

SECTIONS

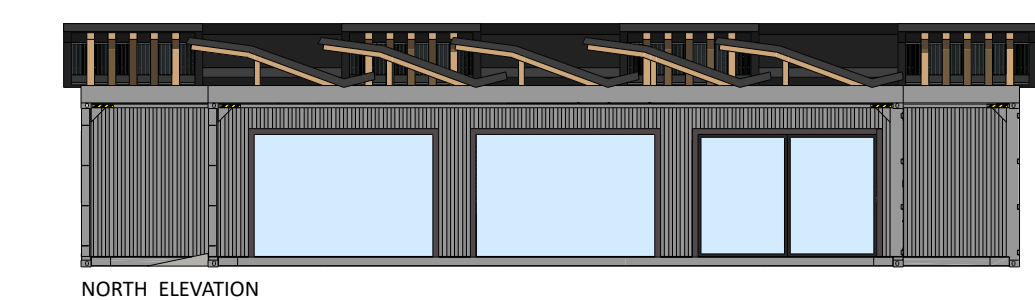


SECTION AA'



SECTION BB'

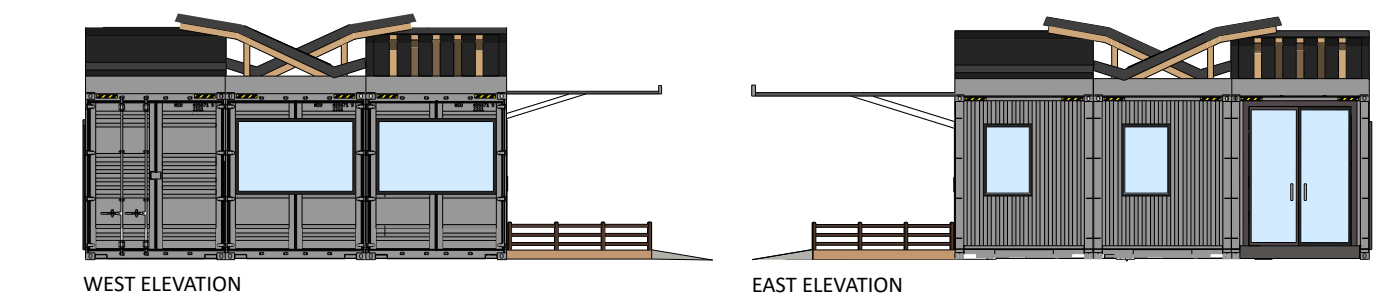
ELEVATIONS



NORTH ELEVATION



SOUTH ELEVATION



WEST ELEVATION

EAST ELEVATION

References
 Alter, L. (2021, July 12). What's wrong with shipping container housing? One architect says "everything." Treehugger. Retrieved November 17, 2021, from <https://www.treehugger.com/whats-wrong-shipping-container-housing-one-architect-says-everything-4806609>
 Encyclopedia Britannica, Inc. (n.d.). Hogan. Encyclopedia Britannica. Retrieved November 17, 2021, from <https://www.britannica.com/topic/hogan>
 Encyclopedia Britannica, Inc. (n.d.). Navajo. Encyclopedia Britannica. Retrieved November 17, 2021, from <https://www.britannica.com/topic/navajo-people>
 History: The Navajo. (n.d.). Retrieved November 17, 2021, from <https://utahindians.org/archives/navajo-history.html>
 Home. (n.d.). Retrieved November 17, 2021, from <https://www.worldhappinessreport.com>
 Home. Discover Navajo. (n.d.). Retrieved November 17, 2021, from <https://www.discovernavajo.com/experience-the-navajo-million-navajo-culture-and-history/>
 Johnson, L. (2017, September 8). Passivehouse or passive house? Signature Sustainability. Retrieved November 17, 2021, from <https://signature-sustainability.com/passivehouse-passive-house/>
 Living Building Challenge Resources. International Living Future Institute. (2021, November 18). Retrieved November 17, 2021, from <https://www.livingfuture.org/for-resources/>
 Mobile Covid-19 Testing Laboratories. Coronavirus. (n.d.). Retrieved November 17, 2021, from <https://www.cdc.gov/coronavirus/>
 Philip C. Clark Inventions, Patents and Patent Applications - Justia Patents Search. Justia. (n.d.). Retrieved November 17, 2021, from <https://patents.justia.com/inventor/philip-c-clark>
 Search. ArchDaily. (n.d.). Retrieved November 17, 2021, from <https://www.archdaily.com/search?q=shipping-container>
 Shipping container home designed for sustainable living. Living Big in a Tiny House. (n.d.). Retrieved November 17, 2021, from <https://www.livingbigintinyhouse.com/tiny-house-tourshiping-container-home-designed-for-sustainable-living/>
 Stahler, E. (2021, June 18). Architecture seeks designs for a post-pandemic world. Wallpaper*. Retrieved November 17, 2021, from <https://www.wallpaper.com/architecture/global-post-pandemic-architecture-responses>
 Symbols and motifs in Navajo weaving. Canyon Road Arts. (n.d.). Retrieved November 17, 2021, from <https://www.canyonroadarts.com/symbols-and-motifs-in-navajo-weaving/>