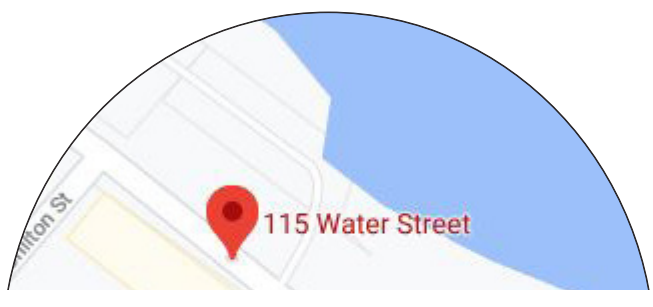


vetCONNECT

the veteran connection



SITE

The site for The Veteran Connection is 115 Water Street, Plymouth MA. According to Veterans Affairs, the Cape has a high population density of veterans, Plymouth allows for a shorter travel distance than Boston facilities. According to the VA, Plymouth is already home to Primary Care Services and Women's Comprehensive Primary Care and Gynecology. Plymouth has Veteran support facilities in the area, a veteran specific living facility would be a great addition to the city.

Veterans Services. (2020). Retrieved from Town of Plymouth MA: <https://www.plymouth-ma.gov/veterans-services>

CONCEPT

Rosemary has been linked to mental health benefits including stress relief and memory enhancement. In the research article noted below, inhaling rosemary decreased students' heart rate during a test. These benefits could help people with stress disorders associated with serving in the military. This concept would be implemented into the building in gardens, as well as the straight lines of the herb will be mirrored in circulation paths in the building.

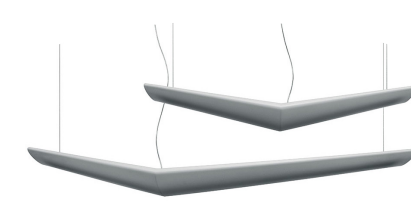
McCaffrey, R., Thomas, D. J., & Kinzelman, A. O. (2009). The effects of lavender and rosemary essential oils on test-taking anxiety among graduate nursing students. *Holistic nursing practice*, 23(2), 88-93. <https://doi.org/10.1097/HNP.0b013e3181a110aa>



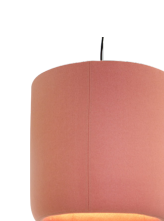
RECEPTION PERSPECTIVE



MODERN FORMS AVIATOR
Air flow - ventilation concerns with COVID-19



ARTEMIDE MOUETTE SUSPENSION
Way finding in corridor with implied arrows for walking path



BUZZSPACE ACOUSTIC PENDANT
Lighting and acoustic properties in communal dining area



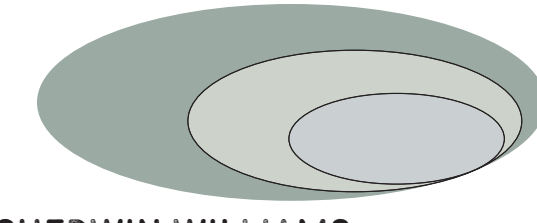
BUZZIMOOD BIOPHILIC ACOUSTIC PANEL
Acoustical properties and air purification



INTERFACE LVT FLOORING
LEED v4, Indoor Air Quality: Greenguard GOLD FloorScore



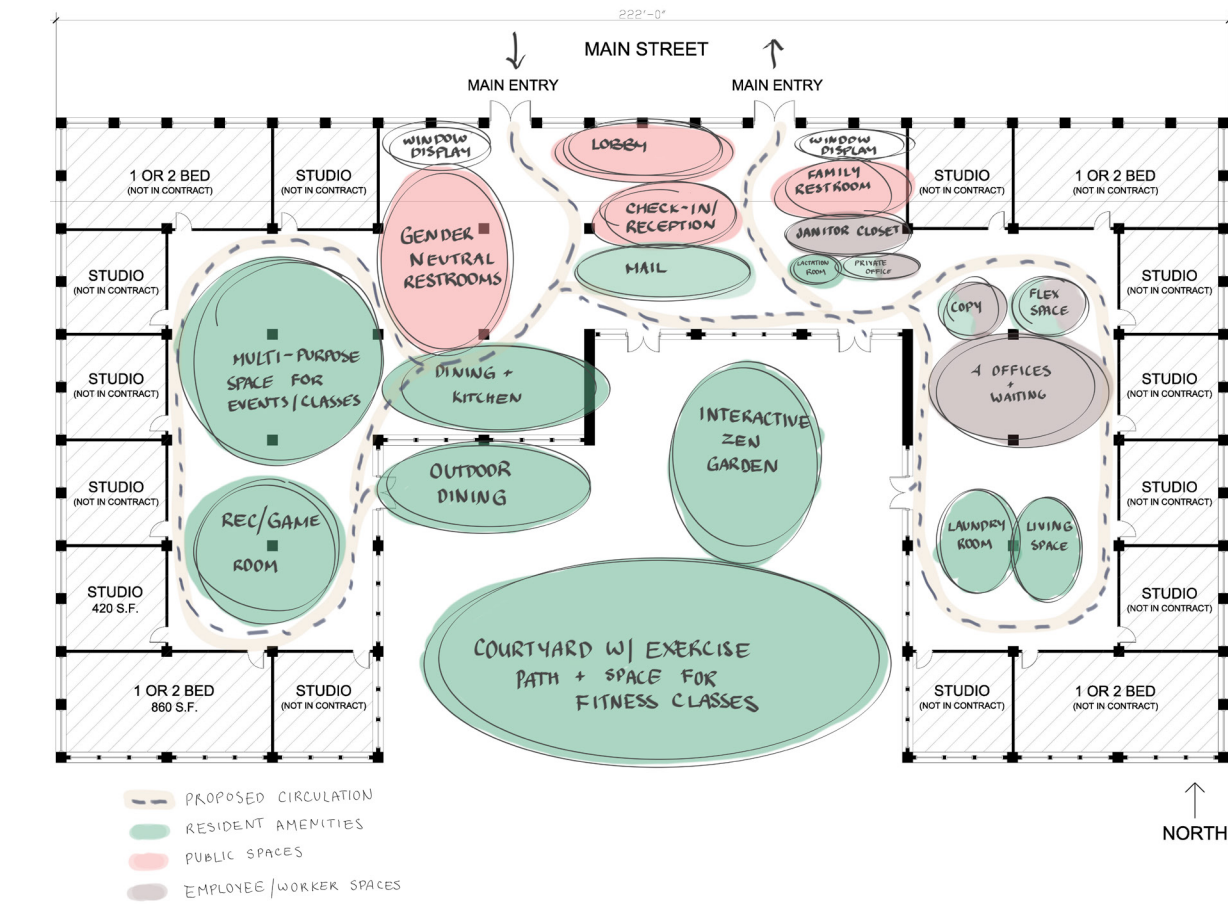
CARNEGIE XOREL WALLCOVERING
Cradle to Cradle Certified Gold SCS Indoor Advantage™ Gold



SHERWIN WILLIAMS
Halcyon Green, Sea Salt, North Star Indoor Air quality Zero VOCs



KIMBALL JOELLE
Bleach cleanable fabric



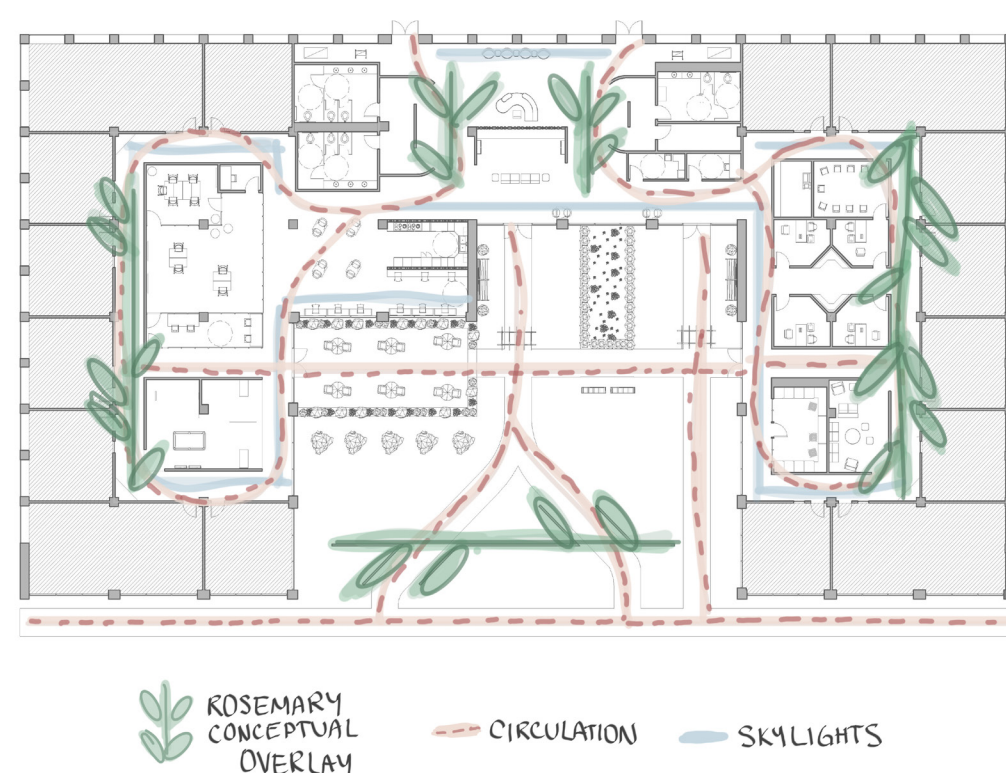
PROCESS WORK



FLOOR PLAN SCALE: 1" = 10' 0"

01. Entry - features signage about events held at the center
02. Gender Neutral Restrooms
03. Family Restroom
04. Janitors Closet
05. Lactation Room
06. Flex Touchdown space - for visiting professionals
07. Flex Space - retracting door opens into corridor for social distancing
08. Copy and Filing Room
09. Four private offices
10. Waiting area for counseling services - seating inset into the walls of corridor
11. Laundry Room - features custom folding table ADA accessible
12. Mock Living Room - a space for small groups to socialize, and allows for social distancing
13. Seating in hallway for short conversations
14. Recreation room - features billiards, darts, and bean bag toss
15. Multi Purpose Space - retractable wall for large group events
16. Communal Dining Area - socially distant, universally designed with ADA roll up window seats
17. Outdoor Dining
18. Courtyard with Zen Garden and trails - promotes meditation and physical exercise

CONCEPT INTERGRATION DIAGRAM



RESEARCH

"Xorel is the most thoroughly tested interior textile material on the market. More than 65 independent tests vet its performance and characteristics in areas as varied as durability, cleanability, acoustics, indoor air quality, bacterial resistance, etc." (Carnegie, 2020)

"Biophilic design can reduce stress, improve cognitive function and creativity, improve our well-being & expedite healing." Browning, W.D., Ryan, C.O., Clancy, J.O. (2014). 14 Patterns of Biophilic Design. New York: Terrapin Bright Green, LLC.

"To allow for privacy, they integrate into the suburb with a public footpath from the street to a local park running along the edge of the community, just enough to blend into the surroundings and community without welcoming in outsiders." Marcus, C. C. (2000). SITE PLANNING, BUILDING DESIGN AND A SENSE OF COMMUNITY: AN ANALYSIS OF SIX COHOUSING SCHEMES IN DENMARK, SWEDEN, AND THE NETHERLANDS. *Journal of Architecture and Planning Research*, 146-163.



COMMUNAL DINING PERSPECTIVE



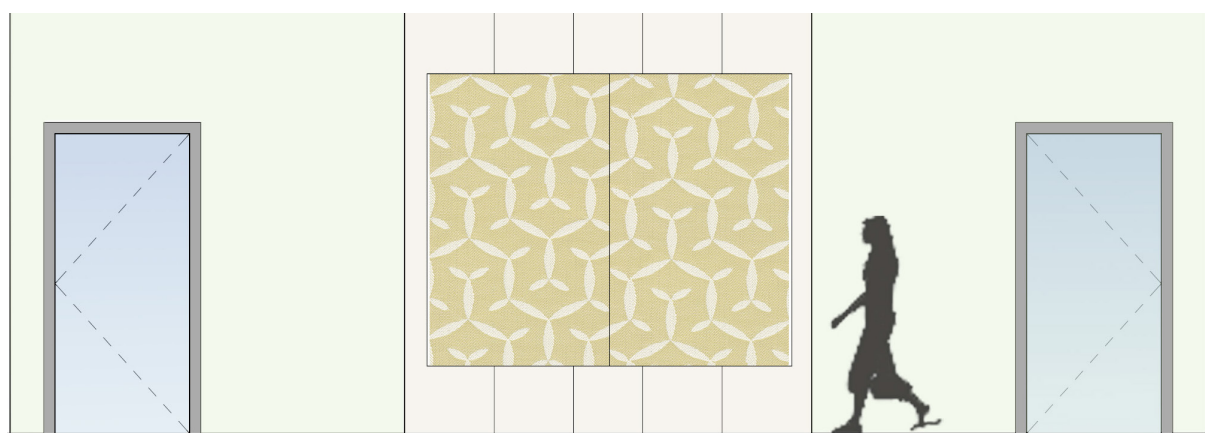
INTERIOR FACADE ELEVATION
SCALE: NTS

Sidelight windows on apartment walls fade to opaque when a button is pressed, connecting the interior corridor with residents apartments, promoting social interaction within the interior facade.

Sconces are placed on the interior facade; residents may turn on the sconces to signal the wish to interact. Seating in corners of corridors as shown above serve as a touch down location for informal conversations.

"There would be a lot less isolation if people had that sense of community around them" - Alexander Moulton (veteran in person interview)

"Having safety measures like sitting with your back to the wall and having more than one exit in a space would be helpful to veteran comfort" - Alexander Moulton (Veteran in person interview)



OFFICE CORRIDOR ELEVATION
SCALE: NTS



OFFICE CORRIDOR
Waiting area seating recessed seating into wall



COURTYARD AND ZEN GARDEN PERSPECTIVE

All furniture is modular and able to be moved for social distancing protocol

Light will travel from courtyard to laundry and mock living rooms through clerestory windows

Implied walkways are featured in the courtyard promoting physical activity and rehabilitation



MULTIPURPOSE ROOM PERSPECTIVE



LIVING ROOM PERSPECTIVE



LAUNDRY AMENITY SPACE PERSPECTIVE