

## Location Analysis

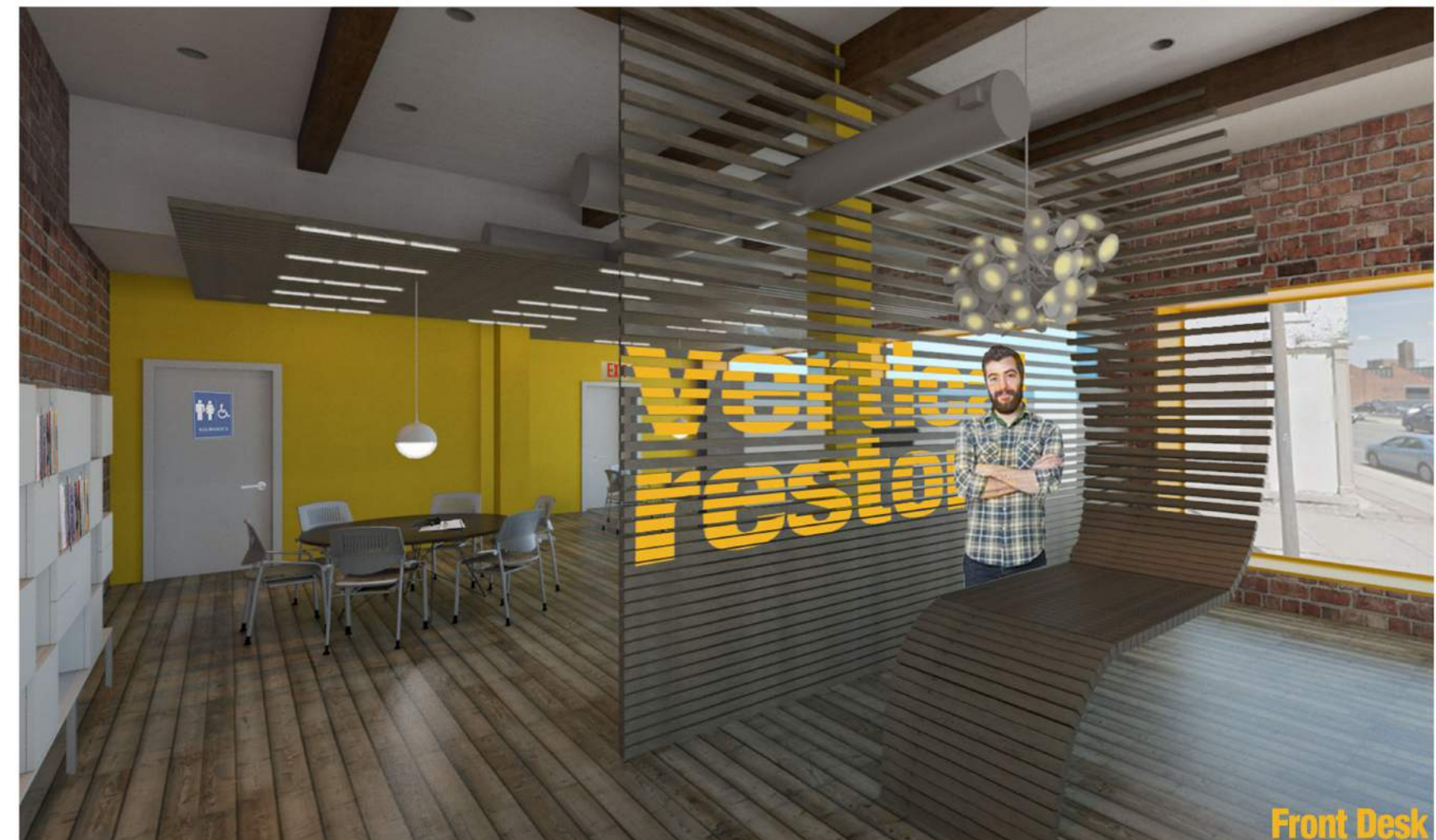
We are choosing to locate our shared space on Niagara St. in Buffalo, NY down by the Niagara River. Buffalo, NY is going through a revitalization that is powered by the residents that live in the community and also multiple design firms that want a better future for their community. Buffalo is immersed with rich architecture that dates back to the 1850's. There are many buildings in Buffalo that are adaptive reuse; a few of them are Lafayette Hotel, Historical Society Resource Center, Larkin @ Exchange Building, Paramount Theater, H.H. Richardson Complex. This vertical studio will help showcase the adaptive reuse of this city. This studio will be able to bring together design professionals, students, and the community who all have the same mindset that rebuilding Buffalo's architecture is an important feat. A major firm that is vast in adaptive reuse is Carmina Wood Morris who is located in downtown Buffalo. There are also organizations, communities and students that are passionate about adaptive reuse too. The ship yards down on the Niagara River have been recreated for better tourist attractions. The shipping docks were being rebuilt so we reused the wooden planks for some of the features in our space. Having personal experiences in a vertical studio we have benefited from feeding off of each other's ideas, knowledge, and experiences. Learning is not only accomplished in the classroom, but also in the studio as students collaborate on their work.

## Concept Statement

The shared space that we are creating in downtown Buffalo is going to house a vertical studio for the interior design major associated with Buffalo State College and also the community around. Our vertical studio is focusing on teaching the students and the community on adaptive reuse. Bringing together a studio and a community in a collaborative space acts as a very important way of communicating with each other and gives the community more knowledge about the design world around them. As one enters the space, they will see a mural on the front wall with images of different places around Buffalo that have incorporated adaptive use. We reused wood planks from harbor docks down on Niagara River that was being rebuilt. These will be used for the receptionist desk, office and divider wall, and some ceiling treatment. Some of the features that we left are the exposed bricks walls, wooden floors and the open ceiling. Our research found that learning occurs in a group or social context through observation, imitation, and modeling. Lower level students, in a vertical studio develop a knowledge base through their observations and increasing participation in the activities of the studio community, gradually assuming an identity as more experienced. Upper level students benefit from teaching and relearning skills and techniques. {1 Peterson, M. 2014;} The community and professionals are also involved in the vertical studio. The professionals will be able to hold meetings and presentations to the local community and the students. This allowing for direct feedback and interaction among the students professionals and community.

Peterson, M., & Tober, B. (2014). Institutionalizing the vertical studio: Curriculum, pedagogy, and the logistics of core classes with mixed-level students.

# vertical restore





# vertical restore



1- Joel Lounge Chair- A graceful volume in a comfortable, embracing form. Its comface scale invites settings.



2- Sebastopol Table- Simple yet engaging. Solid yet open. Both surface and storage.



3- Nelson Platform Bench- Equal parts seat and surface, it serves as a bench, low table.



8- Drafting Tables from Alvin- The Ranger is a professional extremely durable and stable all metal table 37" high, and features a work surface that tilts



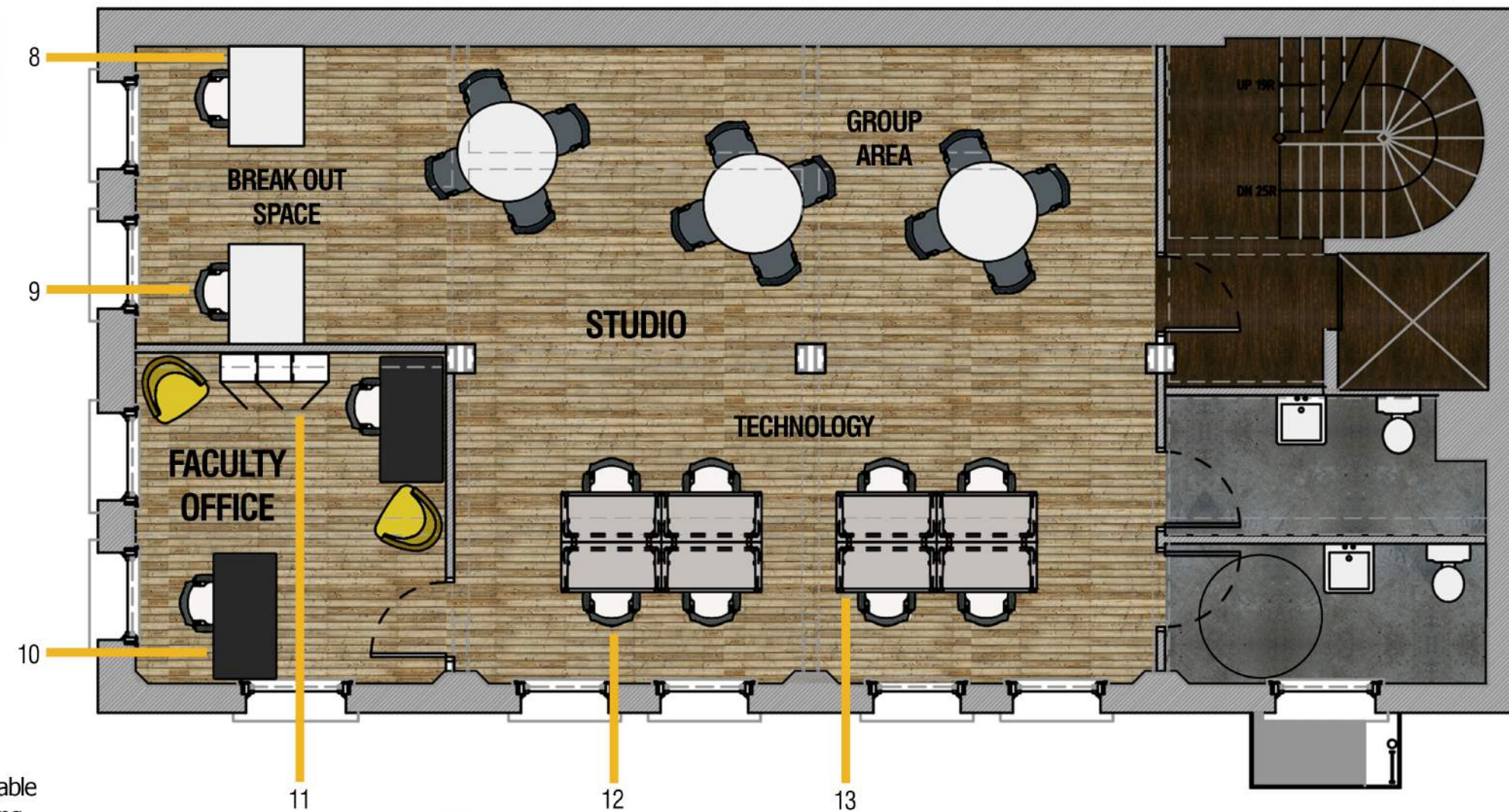
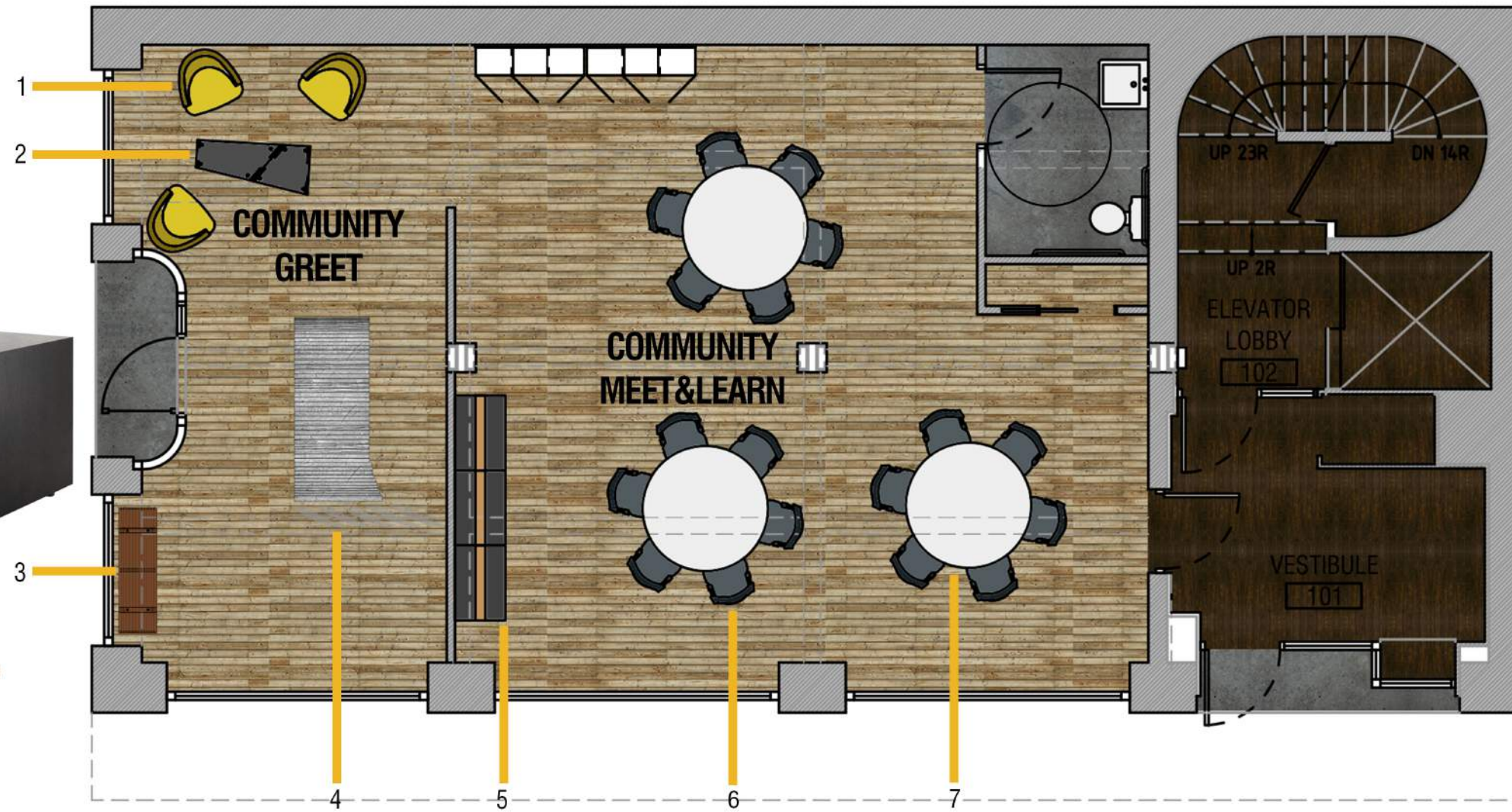
9- Kart Caster Stool- Kart Caster Stool extends the family with a height-adjustable stool on a 5-star caster base with footing.



10- Distil Desk and Table- Equally appropriate in a small office and work room, Distil takes work seriously without taking



11- Denizen Storage Towers- Towers offer open display and closed cabinets, box drawers, and filing.



4- Custom Receptionist Desk- Built from reused wooden planks from an old shipping yard in downtown Buffalo. The features comes down from the beam and curves down onto the floor.



5- Exponents White Board & Mobile Display- Move the message. Work the room. Elevate any conversation.



6- Kart Stacking Chair- The Kart stacking chair takes the refined design and comfort of the Kart chair and translates it into a flex-back stacker.



12- Kart Nesting Chair- Modeled after shopping carts, Kart combines the comfort of a task chair with functionality never seen before in a stacking/nesting chair.



7- Tavolo XZ3 Table- Sturdy and versatile, the Tavolo tables consist of steel rod bases in chrome or white epoxy resin and a white MDF top with polymer cover.



13- Train Table- Flip, nest, roll, link. Train tables offer the ultimate highpowered solution for training, computer lab, seminar, and multipurpose rooms.



Reused wood planks from the shipping yard



Armstrong commercial-LVT Natural Creations



Existing concrete with epoxy coating



Reused wooden floor from existing building