

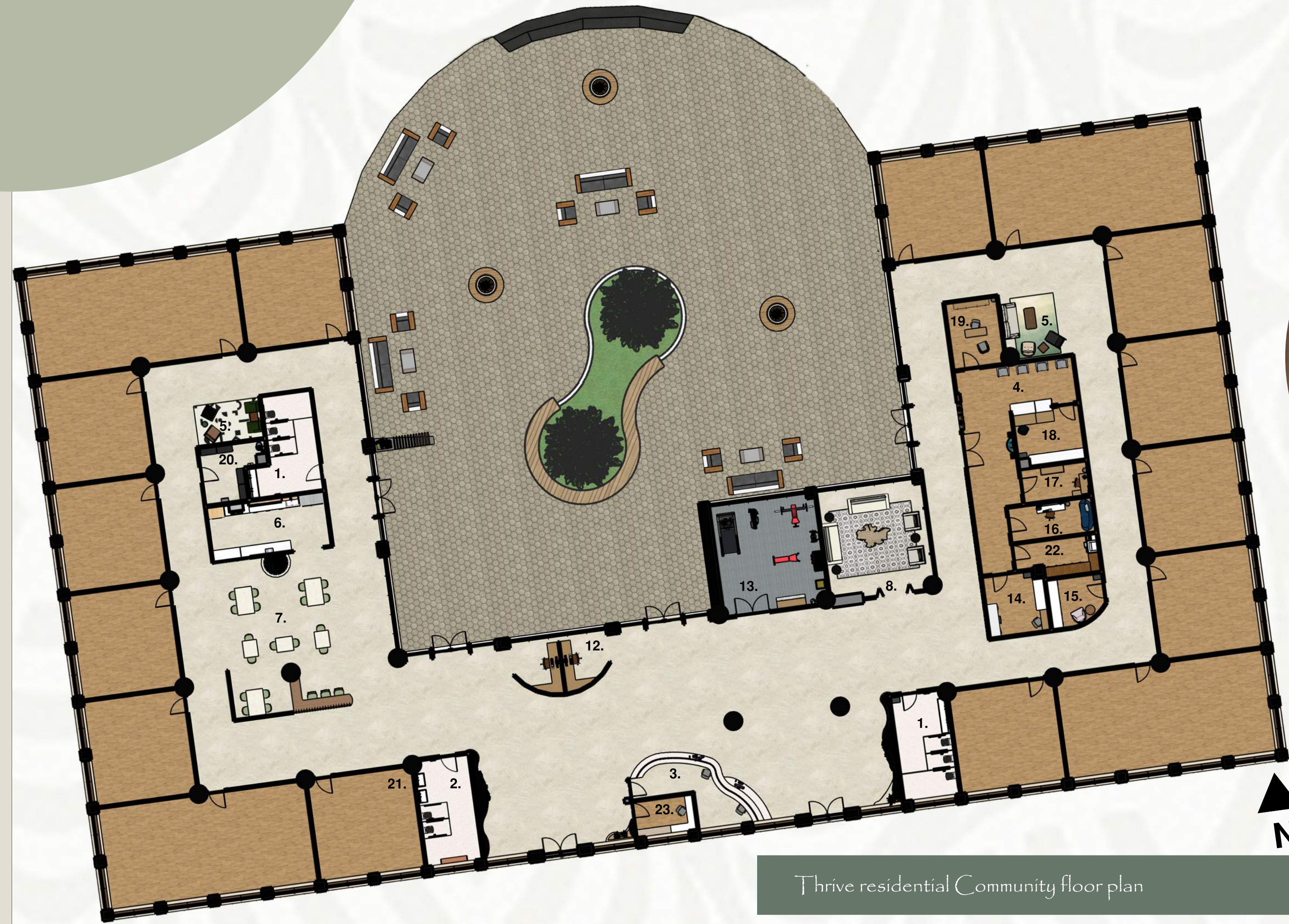
Arlington, Texas

Thrive is conveniently located in Arlington, Texas, a halfway point between Dallas and Fort Worth, which are two major cities in the North Texas region. Tarrant county is home to more than 119,000 veterans; meanwhile, the city of Arlington is home to over 18,000 veterans, making this a prime location to serve the veteran needs of the north Texas region (Veterans in Texas: A Demographic study 2012) (Arlington, Texas Population 2020). This location provides accessibility to transit, hospitals, job opportunities, and local highways for traveling visitors.



Thrive

A Residential Care Community for Veterans



Thrive residential Community floor plan

Health and Well-being

The color green evokes emotions pertaining to personal development, harmony, and self-acceptance.

Safety of Guest

The color yellow evokes emotions pertaining to cleansing, and mental stimulation.

Community Growth

The color blue evokes emotions pertaining to intuition, relaxation, peace and self-expression.

- 1. Gender neutral restroom
- 2. Family restroom
- 3. Service desk
- 4. Waiting room

Features

- Adaptable furniture
- Microban silver ion technology
- Indigo clean lighting technology
- Sensor faucet and toilets
- Separate entrance and exits

- 5. Community patio
- 6. Kitchen
- 7. Dining room
- 8. Flex space
- 9. Community garden
- 10. Outdoor lounge seating
- 11. Walking trail

- 12. Computer room
- 13. Gym
- 14. Outpatient Doctor's office
- 15. Lactation room
- 16. Head of counseling services
- 17. Manager of veteran support office
- 18. Administrative assistant office
- 19. Job and education resource office

Features

- Living wall
- Water feature

- 20. Janitor closet
- 21. Residential suite's
- 22. Copy and filing room
- 23. Building Manager's office

Research:

Many veterans are displaced after being dismissed from the Armed Forces (Kintze, Keeling, Xintarianos, Taylor-Diggs, Munch, Hassan Castro, 2015).

Studies show that different colors create different responses and can help people cope with past experiences and present trauma (Azeemi & Raza, 2005).

Studies show the impact of plants and natural elements in one's environment is a key factor to a happy, healthy life (American Society for Horticulture Science 2020).

Constant fresh oxygen helps restore minds to a more stable and clear space and maintains a clean and healthy environment for residents to flourish. Indoor air contains over 300 toxins or volatile organic compounds (Hillside, Psychological Benefits of Plants & Horticulture Therapy 2020).

Indoor plants combat poor air quality by naturally removing toxins through digesting carbon dioxide and exuding pure oxygen (American Society for Horticulture Science 2020).

Safety of Guest: The safety of the guest and workers at Thrive are a top priority, therefore we have incorporated a contactless concierge desk, with facial recognition entry and exit. ECOS paint, a product that is non-toxic, odorless, zero VOC, and free of harsh chemicals, coats all painted walls, ensuring the well-being of our residents and our environment. To allow minimal congestion within the circulation spaces we have included directional entry and exits to the facility. Additionally, Indigo clean lighting technology and touchless faucets and toilets will be incorporated, maintaining not only a healthy environment, but an accessible and energy efficient environment as well.

Community Growth: The harmonization of biophilic design, color theory, Universal and ADA design, health and safety measures, and sustainable design creates a unique and advantageous opportunity for veterans to live alongside one another, thriving individually and as a community.

Health and Well-being: At Thrive, residents are equipped with the necessary resources for individual success. On-site counseling and medical services are provided and accessible to every resident. This facility features a Veteran's Services office, an outpatient doctor's office, and a counseling office, as well as a job/education center.



Outdoor activities at Thrive



Living wall



Outpatient Dr. office



Water feature



Graham Brown wallpaper

Primary Source: Assembly at First North

This campus encompasses a variety of design attributes and technical advances that keep their guest safe. These include gender neutrality, efficient circulation, and collaboration spaces that maintain safety and flexibility.



Exterior Brick

Cali Bamboo, Java Fossilized, Engineered bamboo

Fireclay, Rosemary

Fireclay, Great Blue Heron Gloss

Silestone, White diamond

Fireclay, Kelp

Accoya, Bamboo

Daltile, Jurastone Beige, Limestone

Concord Terazzo

Materials

Concept Statement

At Thrive, we are driven to serve the veterans of our local community by providing a space where individuals can mentally, physically, and emotionally flourish, find meaning through introspective, extrospective, and retrospective resources, and find comfort through belonging.



Courtyard and outdoor patio perspective



Interior community patio



Residential suite facade elevation



Community dining perspective



Kitchen elevation



Thrive lobby perspective



Health and wellness center perspective

Concept Statement: Thrive Residential Care Community

Thrive is designed to serve the veterans of the local community by providing a space where individuals can mentally, physically, and emotionally flourish, find meaning through introspective, extrospective, and retrospective resources, and find comfort through belonging in a sustainable and salubrious environment.

Thrive Residential Care Community

The importance of social sustainability is prevalent now more than ever due to the current pandemic the world is facing. COVID-19 has enabled social anxiety, disconnection, and loneliness (McGregor, 2019). The fear of socialization has been exceptionally high since March of 2019. Within this relatively short period, people have developed COVID fatigue and began to realize how challenging and unrealistic it is to live life without human interaction. Life must continue, just in an adapted fashion. Socially sustainable design has newfound importance when creating living communities. Individuals want to feel safe and secure in their environment but still have the burning desire for socialization (McGregor, 2019). The socially sustainable living design intends to meet both needs, validating the health and safety of residents while empowering residents to socially connect and communicate.

Thrive is designed to serve the veterans of the local community by providing a space where individuals can mentally, physically, and emotionally flourish, find meaning through introspective, extrospective, and retrospective resources, and find comfort through belonging in a sustainable and salubrious environment. The harmonization of biophilic design, color theory, Universal and ADA design, health and safety measures, and sustainable design creates a unique and advantageous opportunity for veterans to live alongside one another, thriving individually and as a community.

Thrive is conveniently located in Arlington, Texas, a halfway point between Dallas and Fort Worth, which are two major cities in the North Texas region. Arlington resides in Tarrant County, one of the largest counties in the state of Texas. Tarrant county is home to more than 119,000 veterans; meanwhile, the city of Arlington is home to over 18,000 veterans, making this a prime location to serve the veteran needs of the north Texas region (*Veterans in Texas: A*

Demographic study 2012). This location provides accessibility to transit, hospitals, job opportunities, and local highways for traveling visitors.

At Thrive, residents are equipped with the necessary resources for individual success. This facility features a Veteran's Services office, an outpatient doctor's office, and a counseling office, as well as a job/ education center.

Interior and exterior communal spaces have been created for residents and guests to socialize while maintaining a safe, social distance. With a hiking trail that runs through our campus and around the nearby lake, mental and physical activity and engagement will be heightened. A garden extended from the outdoor patio creates an opportunity for people in the local Arlington community to converge in one place and bond over nature and growth.

Veterans are subject to many situations that can cause stress, anxiety, and other mental illnesses, which is why therapeutic design is a dominant feature. Studies show that different colors create different responses and can help people cope with past experiences and present trauma (Azeemi & Raza, 2005). Thrive will feature color-theory based design choices to better suit the residents in all capacities.

Biophilic design is essential to creating a positive and therapeutic environment. An indoor water element has been included, creating a sense of calm and tranquility. This has intentionally been placed near the doctor's and counseling offices to provide peace to residents who frequent this area and are struggling mentally, physically, and emotionally. Studies show the impact of plants and natural elements in one's environment is a key factor to a happy, healthy life (American Society for Horticulture Science 2020). A direct experience of natural and living elements stabilizes and connects the residents in mind, body, and spirit.

The health of the staff, residents, and guests is extremely important, especially amidst one of the most intense pandemics to sweep the globe. In more communal spaces, especially those with fabric, and touch-oriented surfaces, the integration of Microban Silver Ion Technology into or coating materials and surfaces is a precautionary and protective measure that Thrive is equipped with to ensure the health and safety of the residents and staff (*Microban Silver Antimicrobial Technology*) (Cole, 2020).

We will be incorporating a contactless concierge desk, with facial recognition entry and exit (*Healthcare after COVID-19: Smart design solutions for clinical spaces 2020*) (Cole, 2020). Entrances and exits are one-directional, creating a one directional circulation flow for the entire residence. These limitations reduce unwanted close contact and congestion in common spaces. Additionally, advanced lighting systems and touchless faucets and toilets will be incorporated, maintaining not only a healthy environment, but an accessible and energy efficient environment as well. Using sustainable materials is important in adhering to the longevity of the Earth and the people living in it. ECOS paint, a product that is non-toxic, odorless, zero VOC, and free of harsh chemicals, coats all painted walls, ensuring the well-being of our residents and our environment (*Paint you can feel good about 2020*).

Thrive has been designed to keep the community living alive and flourishing. People need human interaction, especially during times of a pandemic when it seems that media and society press us to disconnect and distance. Veterans, especially, need community involvement, interaction, and sometimes assistance after being readmitted back into civilian life. Thrive Residential Care Community was created to support this group of people and keep North Texas' veteran community thriving.

Works Cited

- American Society for Horticultural Science. (2020, January 2). Plants can improve your work life: The mere sight of an indoor plant can reduce stress. *ScienceDaily*. Retrieved November 12, 2020 from www.sciencedaily.com/releases/2020/01/200102184829.htm
- Arlington, Texas Population 2020. (n.d.). Retrieved November 09, 2020, from <https://worldpopulationreview.com/us-cities/arlington-tx-population>
- Azeemi, S., & Raza, S. (2005, December). A critical analysis of chromotherapy and its scientific evolution. Retrieved November 12, 2020, from <https://www.ncbi.nlm.nih.gov/pmc/articles/PMC1297510/>
- Cole, R. (2020, April 18). Five Ways COVID-19 Is Changing the Future of Interior Design. Retrieved November 12, 2020, from <https://www.forbes.com/sites/reginacole/2020/04/17/five-ways-covid-19-is-changing-the-future-of-interior-design/?sh=280cdbc52ee2>
- Council, T. W. I. (2012). Veterans in Texas: A demographic study. *Retrieved Nov 01, 2020*.
- Healthcare after COVID-19: Smart design solutions for clinical spaces. (2020, April 13). Retrieved November 12, 2020, from <https://www.nelsonworldwide.com/healthcare-after-covid-19-smart-design-solutions-for-clinical-spaces/>
- Hillside. (2020, November 02). Psychological Benefits of Plants & Horticulture Therapy. Retrieved November 12, 2020, from <https://hside.org/plants-improve-mental-physical-health/>

Kintzle, S., Keeling, M., Xintarianos, E., Taylor-Diggs, K., Munch, C., Hassan, A. M., & Castro, C. A. (2015). Exploring the economic & employment challenges facing us veterans. *Los Angeles: USC School of Social Work*.

McGregor, J. (2019, April 07). This former surgeon general says there's a 'loneliness epidemic' and work is partly to blame. Retrieved November 12, 2020, from <https://www.washingtonpost.com/news/on-leadership/wp/2017/10/04/this-former-surgeon-general-says-theres-a-loneliness-epidemic-and-work-is-partly-to-blame/>

Microban Silver Antimicrobial Technology. (n.d.). Retrieved November 12, 2020, from <https://www.microban.com/antimicrobial-solutions/technologies/microban-silver-technology?creative=444093779956>

October 14, 2. (2020, October 14). Assembly at North First: Putting Resilient Design to Work in the Wake of the Pandemic: Dialogue Blog: Research & Insight. Retrieved November 12, 2020, from https://www.gensler.com/research-insight/blog/resilient-post-pandemic-office-design-assembly-north-first?utm_source=dialogue-now-email_2020_oct15

Paint you can feel good about. (n.d.). Retrieved November 07, 2020, from <https://www.ecospaints.net/>

