

THE

BRIDGE

COMMUNITY + DEVELOPMENT

LOCATION ANALYSIS

Located in the Hunts Point area of **South Bronx**, New York, The Bridge is a dual-purpose facility offering interior design consultation and community support through **service learning**. The once prospering residential and industrial area dates back to the 1600's and was sought for its abundance of space, proximity to the Tri-State region, and existing railway (BankNote, 2015).

However, today the Bronx is **high-risk** community in need of support. With a population of 1.5 million people, it is among one of the lowest income communities in the nation. The South Bronx area has the highest percentage of youth who lack a connection to work or school in New York City (The Point, 2015).

After-school programs for students provides

an **opportunity** and **solution** to engage youth by teaching them the importance of creativity and intuition through drawing and modelling as a means to problem-solve. The Bridge facilitates this by helping them apply imaginative and constructive forethought to practical problems which develops a new form of **skilled behaviour** (Owen-Jackson, 2002).

The recent drop in crime rates in the area has lead to an influx of investors' attention causing a **real-estate boom** in the borough (Clarke, 2015). To address the community's main concern of **gentrification**, The Bridge will work with affordable-housing real-estate developers, such as Arker Companies, to develop the abandoned **industrial land**, rather than tearing down existing residences (Clarke, 2015).

BRONX AREA MAP



VERTICAL LEARNING STUDIO - SECOND FLOOR



THE BRIDGE - MAIN FLOOR RECEPTION

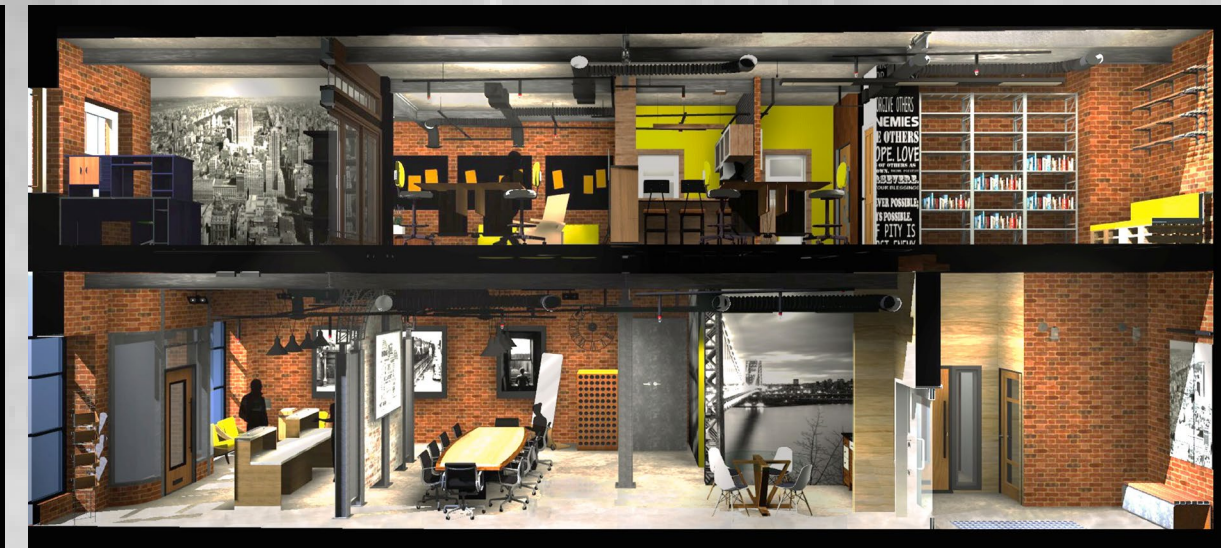
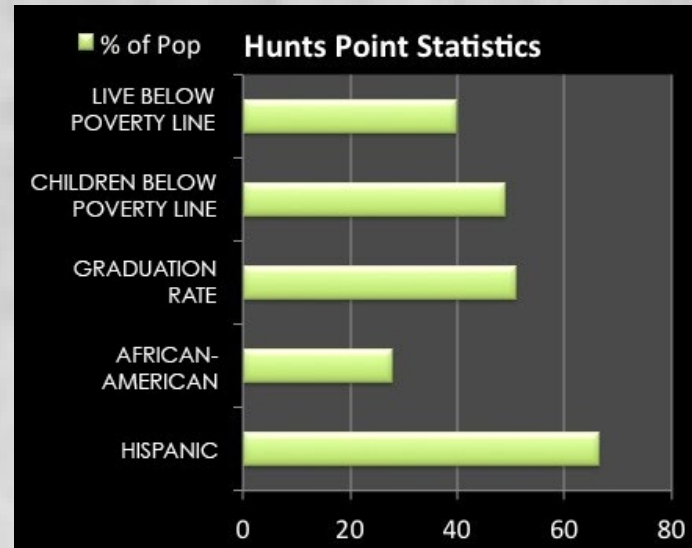
CONCEPT

The goal of 'vertical learning' is to **bridge the divide** between real-estate developers, investors, and community members who face potential gentrification. The service learning aspect helps to build a community that **supports** affordable housing while enhancing the existing community. The Bridge plays a critical role in fostering tolerance and celebration of identity by providing opportunities for the community to participate in its planning processes (Hodgson, 2011). Linking the community, its stakeholders, and local **Pratt University** students preserves the cultural heritage of the Bronx by facilitating a **symbiotic relationship** within the broader community.

IMPLEMENTATION

This facility assists under-served youth in the region with the implementation of after-school programs to provide a **safe place** to thrive. The Bridge will be a culturally responsive resource for the community by teaching students the importance of **community identity** through design, and exploring new expressions for innovation. Public art nights allow residents and students to proudly display their personal work and in-studio projects. Community identity and **cultural vitality** can once again re-establish itself through the articulation of stories by its diverse ethnic groups.

The Bridge's mission to **preserve** and **revitalize** the neighbourhood is implemented through the use of local craftsman and **up-cycled** materials from nearby demolition sites. Exposing the existing architecture while incorporating polished concrete and steel columns commemorates the industrial history of the neighbourhood. Contrasting aged brick against a fresh, vibrant chartreuse serves as a visual representation for the **progression of time**. Minimalistic furniture adds variety among the strong architecture, symbolizing the harmonious relationship between the community and the stakeholders.



References
 (n.d.). Retrieved November 27, 2015, from <http://www.nytimes.com/newsgraphics/2014/01/05/poverty-map/?ref=multimedia>
 Bronx, NY (Southern Blvd / E 149th St). (n.d.). Retrieved November 27, 2015, from <http://www.neighborhoodscout.com/ny/bronx/southern-blvd/>
 How the Arts and Cultural Sector Strengthens Cultural Values and Preserve Heritage and History. (n.d.). Retrieved November 29, 2015, from <https://www.planning.org/research/arts/briefingpapers/values.htm>
 Jackson, G. (2000). Learning to teach design and technology in the secondary school a companion to school experience. London: Routledge Falmer.

Klein, R. (n.d.). Reports Of The 'Worst School' In NYC Will Make You Very, Very Depressed (UPDATE). Retrieved November 27, 2015, from http://www.huffingtonpost.com/2014/01/13/ps-106-worst-school_n_4591569.html
 THE POINT - Home Page. (n.d.). Retrieved December 7, 2015, from <http://thepoint.org/index.php>
 The BankNote. (n.d.). Retrieved December 7, 2015, from <http://www.thebanknotenyc.com/huntspoint.html>
 The Rich History of Hunts Point. (n.d.). Retrieved November 27, 2015, from <http://bronxjournal.com/2011/12/the-rich-history-of-hunts-point/>
 The South Bronx real estate market is suddenly burning hot. (n.d.). Retrieved December 7, 2015, from <http://www.nydailynews.com/life-style/real-estate/south-bronx-real-estate-market-suddenly-burning-hot-article-1.2178095>

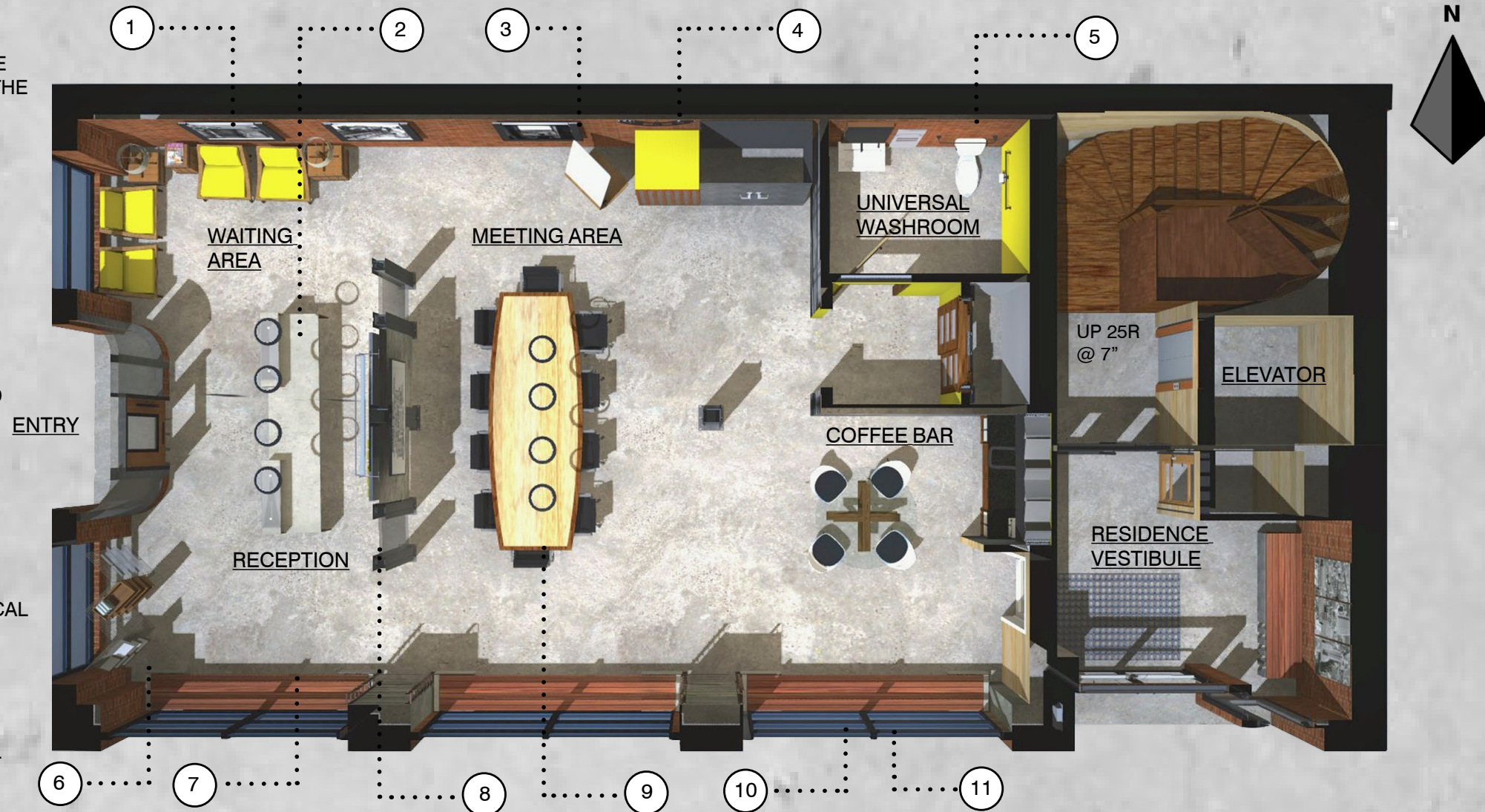
MATERIALS + FINISHES



FLOOR PLANS + RATIONALE

MAIN FLOOR

- 1 BLACK & WHITE PHOTOGRAPHS OF THE BRONX TO REPRESENT & SHOWCASE THE HISTORY OF THE COMMUNITY
- 2 RECEPTION DESK MADE OF UPCYCLED WOOD
- 3 MOVEABLE WHITE BOARD FOR COMMUNITY MEETINGS
- 4 BLUEPRINT STORAGE
- 5 LOW FLOW FIXTURES
- 6 COMMUNITY INFORMATION RACK CARD DISPLAY
- 7 BUILT-IN BENCH SEATING ALONG WINDOWS
- 8 UPCYCLED CURVED TRUSSES FROM NEARBY WRECKAGE
- 9 CUSTOM MEETING TABLE MADE BY LOCAL CRAFTSMAN
- 10 LARGE-SCALE WINDOW DISPLAYS FOR PRIVACY AND ADVERTISING
- 11 WINDOW SHIELD BARRIER FOR VANDAL PROTECTION WITH SOLAR SHADING TECHNOLOGY



THE BRIDGE - MAIN FLOOR RECEPTION - NTS

SECOND FLOOR

- 1 MEETING AREA FOR COLLABORATION TO INCLUDE MODULAR TABLE FOR FLEXIBILITY
- 2 PULL-DOWN PROJECTOR SCREEN FOR PRESENTATIONS
- 3 PIN-UP BOARD FOR PROJECTS AND DISCUSSION
- 4 FLEX AREA WITH LOUNGE SEATING FOR MODEL-BUILDING AND COLLABORATION
- 5 KITCHEN EQUIPPED WITH SINK, MICROWAVE, COFFEE MAKER AND STORAGE
- 6 SECURE DOOR WITH SWIPE CARD, DEAD-BOLT AND SECURITY CAMERA
- 7 FULL-HEIGHT GLAZING FOR VISUAL INTEGRATION WITH THE REST OF THE STUDIO
- 8 REPURPOSED DRAFTING TABLES AND CHAIRS FROM NEARBY FLEA MARKET
- 9 DESK-HEIGHT STORAGE FOR BOOKS AND SUPPLIES
- 10 FULL-HEIGHT RESOURCE LIBRARY
- 11 BUILT-IN CUSTOM UPCYCLED PALLET SECTIONAL WITH UPPER SHELVES



VERTICAL LEARNING STUDIO - SECOND FLOOR - NTS

SOURCED FURNITURE



SECOND HAND FURNITURE



CUSTOM FURNITURE

