

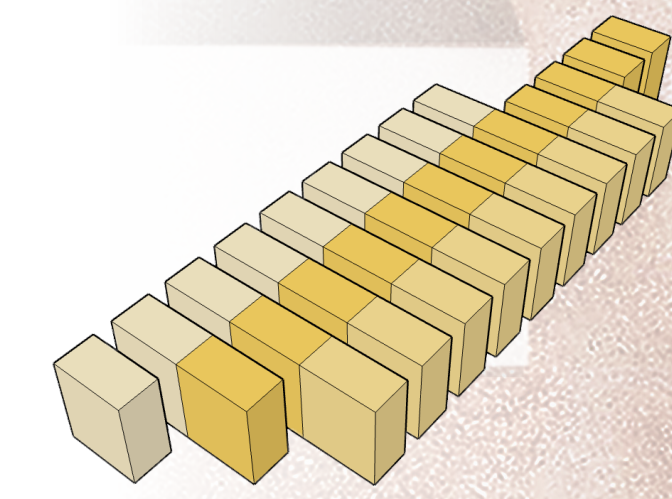


PERSPECTIVE OF COMMERCIAL ENTRY

Antelope Canyon inspired architecture within ceiling, shaped like Horseshoe Bend. Yellow to red gradient lighting gives the perfect feeling of the beautiful rock canyon formations nearby.

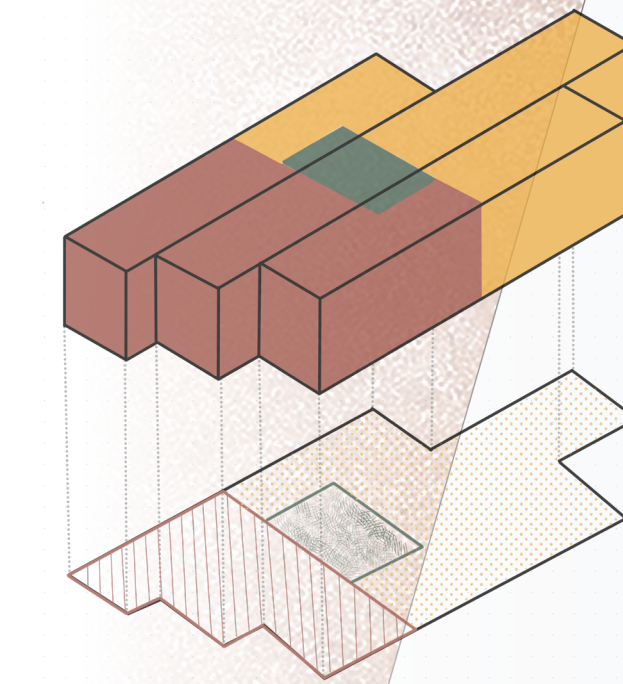
Centered maker's space shaped like a Navajo circular Hogan home. This area forces clockwise circulation, typical of Navajo traditions and practices.

Reception and cash / wrap area also designed with layered materials to replicate layers within Antelope Canyon.



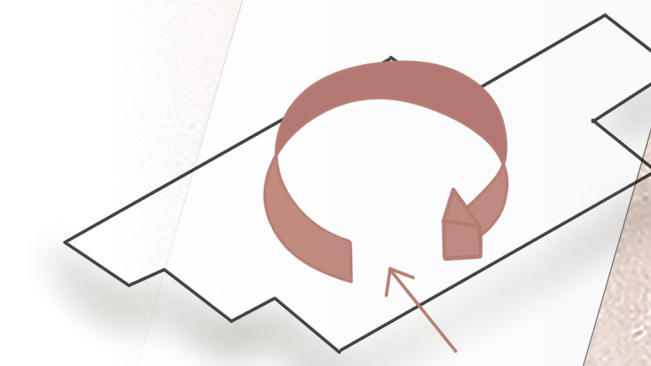
**WARP + WEFT**

Structure designed by a grid layout, mimicking canyon rock layers. By laying the shipping containers opposite, this replicates the warp+weft of the Navajo weavers.



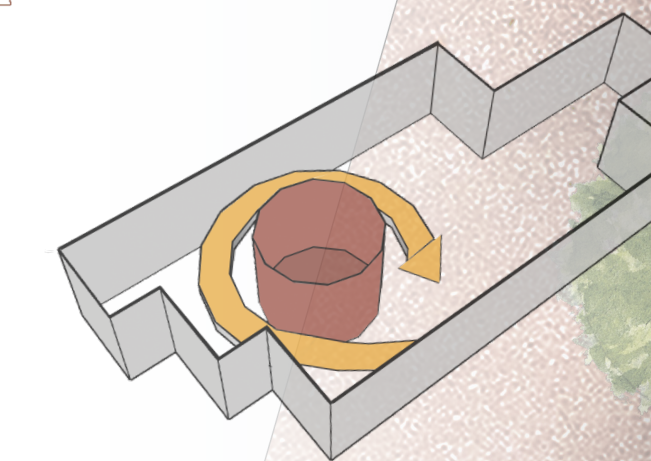
**SPATIAL DIVISION**

Division of spaces are equal between commercial and residential spaces, with a ten percent flex space between.



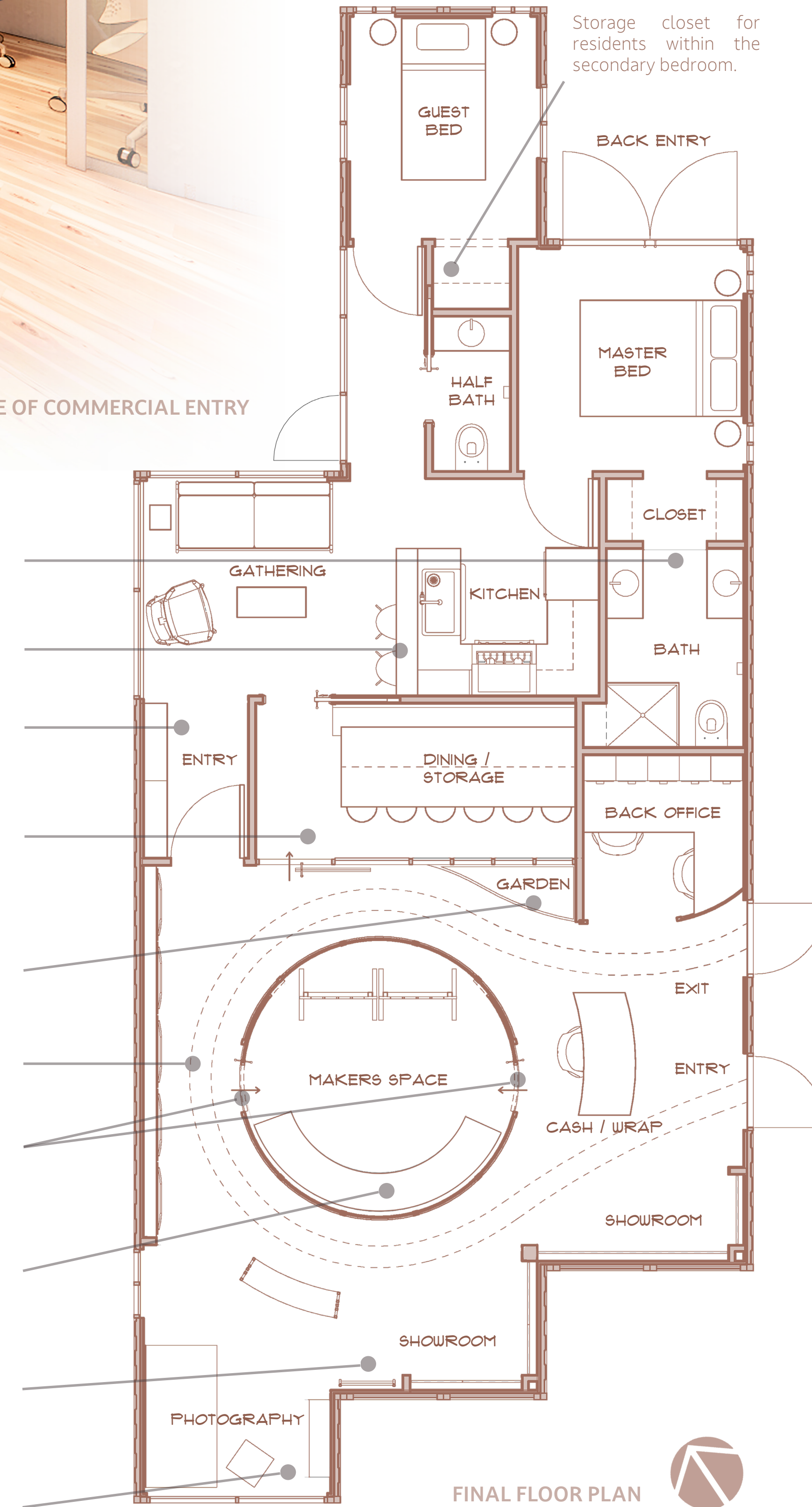
**CLOCKWISE CIRCULATION**

Users move within a clockwise circulation throughout commercial space, as taught in traditional Navajo homes.



**HORSESHOE LIGHTING**

Horseshoe shaped lighting allows for ample lighting within circulation, but minimal lighting within textile areas to avoid textile damage.



FINAL FLOOR PLAN

Double closet and sink space within master suite, and a universally designed shower shelf.

Private, informal dining area for residential space users.

Dedicated residential entry space with coat and shoe storage area.

Flexible dining space for residential users, and conference room abilities for commercial users. Dining table can also be folded, and stools can be moved under built-in bench for additional storage opportunities.

Built-in garden for natural plant dye possibilities.

Circulation throughout space shaped like Horseshoe Bend, sacred to the Navajo culture.

Maker's space equipped with dual entries for easy accessibility to yarn storage, and cash / wrap area.

Adequate storage for maker's space, with countertop surface area for customer viewing of completed materials.

Circulation takes customer through showroom experience. Showroom totals to approximately 90 square feet.

Photography area equipped with large amounts of natural light for optimal textile photography, and adequate storage.



# STRATA

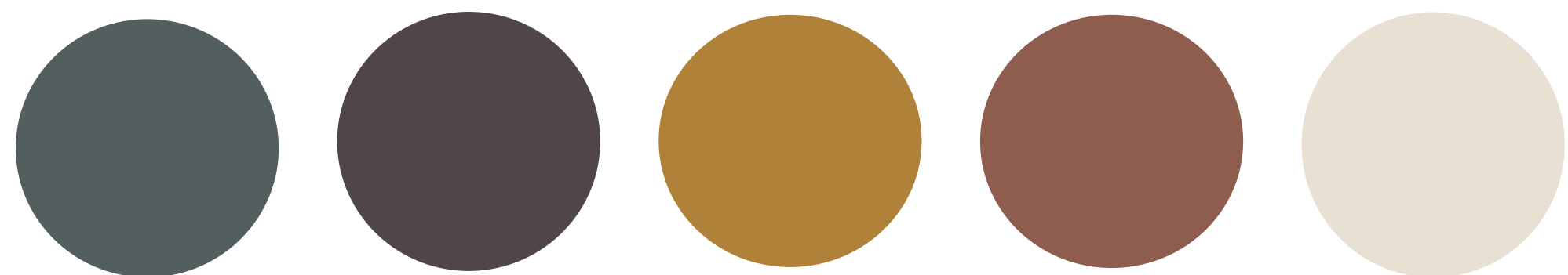
WARP + WEFT

As part of Navajo culture, the concept of STRATA pays tribute to the land and its many abundances. We looked to parallel the surrounding geography when designing this live/work model by pulling elements from Navajo Nation. The vast rock formations and their cascades of light in layers was inspiration to this structure. In attempt to bring forth qualities of the land that the Navajo hold sacred, this model is formed in layers, drawn from the word "strata", which describes the many layers and build up of rock on the land over millions of years. Similarly, traditional Navajo weaving is also done in many layers, creating a cohesion of both the geography and Navajo weaving technique.

## ANTELOPE CANYON + HORSESHOE BEND

The famous Antelope Canyon in Navajo Nation is largely known for its undulating angles and many light beams of which inspired the design of this live / work model. The Navajo Tribe marks the canyon as a spiritual and sacred way of life to their culture. It is considered to be a gift from Mother Nature, the passage of time, and special in the sense that it shows there are things much greater than themselves. The site is blessed by the Navajo people every four years to give thanks to the natural elements that created its beauty.

Nearby, Horseshoe Bend lies within property of the Navajo people as another sacred site. The Colorado river cuts around the U-shaped rocks to make what appears as a horseshoe. It was formed over the course of 20 million years from erosion and water following the natural path of least resistance to carve out the canyon we see today.



N STATE RTE 89A

L'AUBERGE LN

## SEDONA, ARIZONA

Population: 10,000  
 Attraction: Over 3 million visitors per year  
 Transportation: Buses available, as well as Uber  
 Navajo Nation: Sedona is part of U.S. Navajo Land



PERSPECTIVE OF CENTRALIZED MAKER'S SPACE



Dining built-in bench offers storage for stools to go underneath, and allow for flexible meeting and storage opportunities.

Area within maker's space for ability to work on floor, in-front of loom. This allows for proper ergonomics, and space for customers to witness the weaving process.

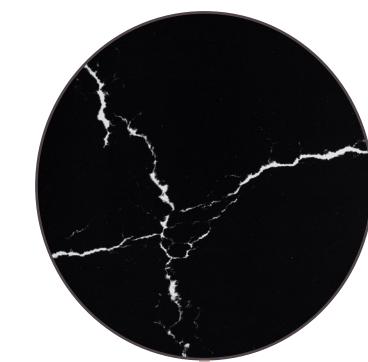
Area below counter within maker's space allows for ample storage opportunities for weaving tools.

Skylight implemented to form horseshoe shape. Natural light creates light beams, mimicking light formed within Antelope Canyon.

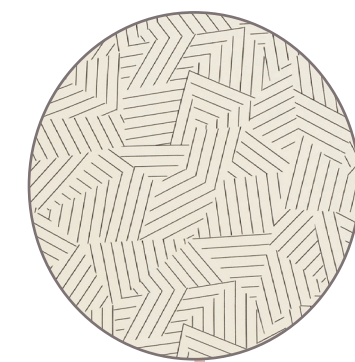
Track lighting within showroom area as opposed to natural light, to showcase textiles without causing damage due to sun exposure.

Textiles showcased within coves to minimize sun harm. They are also hung with quick-release clips which are best for handmade pieces.

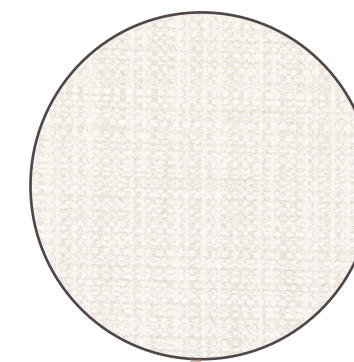
PERSPECTIVE OF RESIDENTIAL ENTRY, GATHERING, AND KITCHEN



**Quartz Countertops**  
Used within kitchen area to provide contrast with natural materials.



**Geometric Upholstery**  
Used in residential space.



**Simple Acrylic Upholstery**  
Used in residential space. Stain, mildew, and mold resistant.



**Upholstery Leather**  
Used in residential space, LEED compliant.



**Bamboo Flooring**  
Used within commercial and residential spaces for natural feel.

## RESEARCH

### TEXTILES + PHOTOGRAPHY THE BUSINESS W+W

In attempt to gain a better understanding of the weaving process and the textiles that the clients will be making, we gained knowledgeable information from a professional in the textiles industry who has experience with a loom and the yarns used to make traditional Navajo weaves.

The wool used in traditional Navajo weaves was from Navajo Churro Sheep due to their coarse wool. Our design provides abundant considerations for this material such as a full yarn wall with drawers for safe storage, as well as a garden for natural dye production opportunities.

By making and selling a product that takes hours to construct and is so fragile, maintenance and care for the textiles were considered when designing all textile areas away from sunlight and in functional storage and display spaces. It was also taken into consideration that rugs should be wrapped up when being stored and kept in a cool and dry environment to avoid bugs that are attracted to the wool.

To promote the hand-crafted weaves and grow the small business, a photography studio is implemented in the space, as well as the back office. Professional photography equipment is utilized in the content corner therefore the design offers space for storage, backdrop, and a soft-box. When photographing textiles, artificial light is unfavorable, thus ample natural light is offered for a more trendy, and overall better option for showcasing the natural colors in the weaves.

### THE TRADITIONAL NAVAJO HOME

The Hogan, the traditional circular Navajo home, is made of natural materials such as wooden poles, tree bark and mud. To pay tribute to this concept, the materials used throughout the space are inspired from earthly colors and materials, and the maker's area is designed with the traditional shape of the Hogan in mind. Furthermore, these homes typically required entry's to the east to allow for good blessings due to morning sunlight. Our design promotes this movement throughout the store to continue this sacred tradition.

### LOOM ERGONOMICS

Traditional Navajo weaving is performed in front of a loom, while sitting on the ground. By sitting and weaving, circulation and posture can be improved and aids digestion and can encourage spinal curvature. The maker's space is equipped with generous floor space for the weavers to sit and create.

### CITATIONS

Antelope Canyon: Conjuring a Beam of Light. (2013, June 13). Retrieved from <https://www.rcquinn.com/antelope-canyon-part-2/>  
 Antelope Canyon History. Navajo Tours. (2020, July 10). Retrieved from <https://navajotours.com/tourist-resources/antelope-canyon-history/>  
 Home. Discover Navajo. (n.d.). Retrieved from <https://www.discovernavajo.com/experience-the-navajo-nation/navajo-culture/>  
 Horseshoe Bend Geology. Grand Canyon Adventures. (2020, March 15). Retrieved from <https://www.dothecanyon.com/horseshoe-bend-geology/>  
 Navajo Nation. Navajo Area. (n.d.). Retrieved from <https://www.lhs.gov/navajo/navajonation/>  
 Navajo rug storage: Guidelines for small and large rugs. Charley's Navajo Rugs For Sale. Charley's Navajo Rugs For Sale. (2015, August 26). Retrieved from <https://charleysnavajorugs.com/navajo-rug-storage-guidelines-for-small-and-large-rugs/>  
 Navajo symbols and meanings: Navajo code talkers. Interviews, Videos & More. (n.d.). Retrieved from <https://navajocodetalkers.org/navajo-symbols-and-meanings/>  
 Rug storage tips: How to store rugs and Carpet. Life Storage Blog. (2019, May 7). Retrieved from <https://www.lifestorage.com/blog/storage/how-to-be-an-expert-at-rug-storage/>  
 Sedona Chamber of Commerce. Visit Sedona. (2021). Retrieved from <https://visitsedona.com/tours-travel-trade/group-transportation-maps/>  
 Symbols and motifs in Navajo weaving. Canyon Road Arts. (n.d.). Retrieved from <https://www.canyonroadarts.com/symbols-and-motifs-in-navajo-weaving/>

SECTION THROUGH PHOTOGRAPHY AREA, YARN WALL, AND RESIDENTIAL AREA

