



SOLDIERS AT EASE

Logo

The logo for Soldiers At Ease was inspired by safety, belonging, support, and new beginnings with each of the elements representing these values. The house represents the safety and belonging that comes from a sense of community, the hands represent the support that comes from community and connections with others, and the lotus flower represents new beginnings. Together, the principles that comprise Soldiers At Ease create a socially sustainable and comfortable environment that allow for veterans to find a supportive community that sets them up for long term success (Institute for Asia and Asian Diasporas, n.d.)

Concept

The goal of this design is to create a supportive, socially sustainable, adaptive reuse living community to accommodate the diverse abilities of veterans and set them up for long term success. Creating a lively and refreshing yet warm and inviting community that fosters connections, veterans will maintain a sense of security and belonging in this socially sustainable neighborhood. Designing a neighborhood street within the community in addition to the integration of various collaborative spaces provides safe and impactful spaces for expression, connection, and growth to allow for soldiers to feel at ease.

Goals

Sustainability / Sustainability, both socially and environmentally, are at the core of this design. Social sustainability focuses on building a strong support network and having access to tools for future success. The goal was to design a space that created "sustainable, successful places that promote well-being by understanding what people need from the places they live and work" (Woodcraft, et al. 2012)

Community / This space provides a sense of community identity and belonging throughout the creation of various collaborative spaces that allow for connection and interaction. The facility presents itself as a neighborhood to further the sense of community and connection.

Safety / Creating a safe environment in terms of both health and well being are crucial to this design. Amidst a global pandemic, it is important to design spaces to physically, but not socially, distance residents. Balancing health safety and mental well being takes priority in this design.

Accessible / At the core of this design, accessible spaces and inclusive design have been integrated throughout to ensure each resident can use the space to its fullest potential. The floor plan has an open concept and allows for efficient circulation.

Purpose / This design strives to create a sense of belonging with each resident it serves. With a strong support system this space gives veterans the tools they need to succeed both in the present and future.

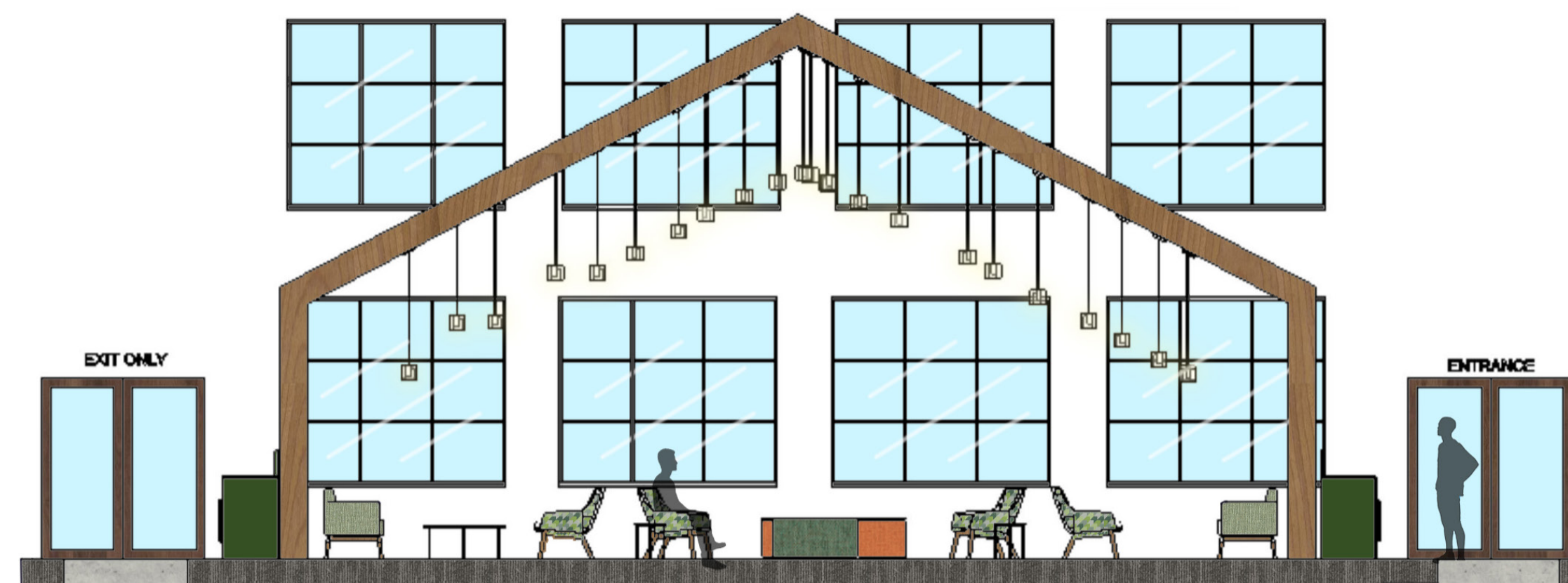
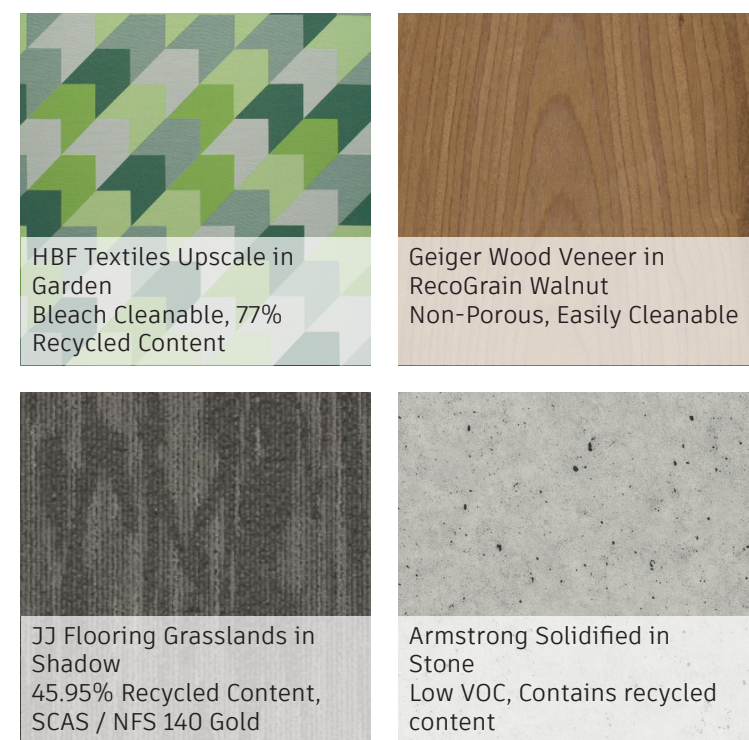


Mood Board



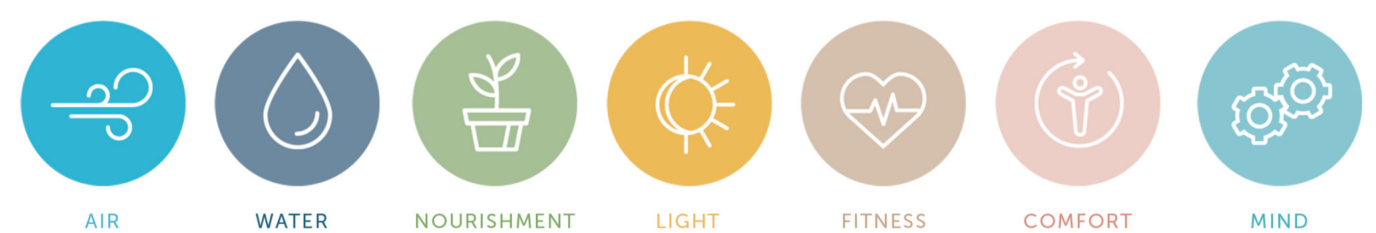
COVID- 19 Design Considerations

Given the current pandemic, it was extremely important to consider how a community founded on socialization and connection could operate under various safety considerations. The creation of various spaces that allow for physically distanced collaboration, creativity, and socialization were core elements of this design to ensure residents felt a sense of connection to their community. An open floor plan with high back or distanced furniture pieces allowed for physical separation and designation of various spaces without feeling isolated. Easily cleanable, non-porous, and antimicrobial materials and finishes were integrated in addition to the provision of ample access to outdoors to support resident health. The implementation of touch free doors, touch free bathrooms, and open areas help minimize contact with shared surfaces.



THE WELL BUILDING STANDARD™

SEVEN CONCEPTS FOR HEALTHIER BUILDINGS



Y	T	M	Q	W	P	Score	Prereq	Points	Prereq	Points
0	0	0	0	0	0	0	0	0	0	0
1	1	1	1	1	1	1	1	1	1	1
2	2	2	2	2	2	2	2	2	2	2
3	3	3	3	3	3	3	3	3	3	3
4	4	4	4	4	4	4	4	4	4	4
5	5	5	5	5	5	5	5	5	5	5
6	6	6	6	6	6	6	6	6	6	6
7	7	7	7	7	7	7	7	7	7	7
8	8	8	8	8	8	8	8	8	8	8
9	9	9	9	9	9	9	9	9	9	9
10	10	10	10	10	10	10	10	10	10	10
11	11	11	11	11	11	11	11	11	11	11
12	12	12	12	12	12	12	12	12	12	12
13	13	13	13	13	13	13	13	13	13	13
14	14	14	14	14	14	14	14	14	14	14
15	15	15	15	15	15	15	15	15	15	15
16	16	16	16	16	16	16	16	16	16	16
17	17	17	17	17	17	17	17	17	17	17
18	18	18	18	18	18	18	18	18	18	18
19	19	19	19	19	19	19	19	19	19	19
20	20	20	20	20	20	20	20	20	20	20
21	21	21	21	21	21	21	21	21	21	21
22	22	22	22	22	22	22	22	22	22	22
23	23	23	23	23	23	23	23	23	23	23
24	24	24	24	24	24	24	24	24	24	24
25	25	25	25	25	25	25	25	25	25	25
26	26	26	26	26	26	26	26	26	26	26
27	27	27	27	27	27	27	27	27	27	27
28	28	28	28	28	28	28	28	28	28	28
29	29	29	29	29	29	29	29	29	29	29
30	30	30	30	30	30	30	30	30	30	30
31	31	31	31	31	31	31	31	31	31	31
32	32	32	32	32	32	32	32	32	32	32
33	33	33	33	33	33	33	33	33	33	33
34	34	34	34	34	34	34	34	34	34	34
35	35	35	35	35	35	35	35	35	35	35
36	36	36	36	36	36	36	36	36	36	36
37	37	37	37	37	37	37	37	37	37	37
38	38	38	38	38	38	38	38	38	38	38
39	39	39	39	39	39	39	39	39	39	39
40	40	40	40	40	40	40	40	40	40	40
41	41	41	41	41	41	41	41	41	41	41
42	42	42	42	42	42	42	42	42	42	42
43	43	43	43	43	43	43	43	43	43	43
44	44	44	44	44	44	44	44	44	44	44
45	45	45	45	45	45	45	45	45	45	45
46	46	46	46	46	46	46	46	46	46	46
47	47	47	47	47	47	47	47	47	47	47
48	48	48	48	48	48	48	48	48	48	48
49	49	49	49	49	49	49	49	49	49	49
50	50	50	50	50	50	50	50	50	50	50
51	51	51	51	51	51	51	51	51	51	51
52	52	52	52	52	52	52	52	52	52	52
53	53	53	53	53	53	53	53	53	53	53
54	54	54	54	54	54	54	54	54	54	54
55	55	55	55	55	55	55	55	55	55	55
56	56	56	56	56	56	56	56	56	56	56
57	57	57	57	57	57	57	57	57	57	57
58	58	58	58	58	58	58	58	58	58	58
59	59	59	59	59	59	59	59	59	59	59
60	60	60	60	60	60	60	60	60	60	60
61	61	61	61	61	61	61	61	61	61	61
62	62	62	62	62	62	62	62	62	62	62
63	63	63	63	63	63	63	63	63	63	63
64	64	64	64	64	64	64	64	64	64	64
65	65	65	65	65	65	65	65	65	65	65
66	66	66	66	66	66	66	66	66	66	66
67	67	67	67	67	67	67	67	67	67	67
68	68	68	68	68	68	68	68	68	68	68
69	69	69	69	69	69	69	69	69	69	69
70	70	70	70	70	70	70	70	70	70	70
71	71	71	71	71	71	71	71	71	71	71
72	72	72	72	72	72	72	72	72	72	72
73	73	73	73	73	73	73	73	73	73	73
74	74	74	74	74	74	74	74	74	74	74
75	75	75	75	75	75	75	75	75	75	75
76	76	76	76	76	76	76	76	76	76	76
77	77	77	77	77	77	77	77	77	77	77
78	78	78	78	78	78	78	78	78	78	78
79	79	79	79	79	79	79	79	79	79	79
80	80	80	80	80	80	80	80	80	80	80
81	81	81	81	81	81	81	81	81	81	81
82	82	82	82	82	82	82	82	82	82	82
83	83	83	83	83	83	83	83	83	83	83
84	84	84	84	84	84	84	84	84	84	84
85	85	85	85	85	85	85	85	85	85	85
86	86	86	86	86	86	86	86	86	86	86
87	87	87	87	87	87	87	87	87	87	87
88	88	88	88	88	88	88	88	88	88	88
89	89	89	89	89	89	89	89	89	89	89
90	90	90	90	90	90	90	90	90	90	90
91	91	91	91	91	91	91	91	91	91	91
92	92	92	92	92	92	92	92	92	92	92
93	93	93	93	93	93	93	93	93	93	93
94	94	94	94	94	94	94	94	94	94	94
95	95	95	95	95	95	95	95	95	95	95
96	96	96	96	96	96	96	96	96	96	96
97	97	97	97	97	97	97	97	97	97	97
98	98	98	98	98	98	98	98	98	98	98
99	99	99	99	99	99	99	99	99	99	99
100	100	100	100	100	100	100	100	100	100	100

PTSD Sensory Room

The use of sensory rooms for dementia patients has allowed for a decrease in symptoms for patients suffering from this disease. The idea of a sensory room has been reinvented to relieve PTSD symptoms. This private space is designed to provide resources that will calm and redirect the users attention away from PTSD episodes. With the incorporation of a bubble wall, ceiling smart screen, and elements that stimulate ones senses, mental health can be restore and renewed in this sensory room (Jakob and Collier, 2013) .

Inclusive Design

- Pull down shelving units
- 9" toe kicks standard
- Accessible garden beds and cabinets
- All countertops set at 2'-6"
- Furniture with arms throughout
- Walkways at 3'-8" minimum, 5'-0" turn around throughout



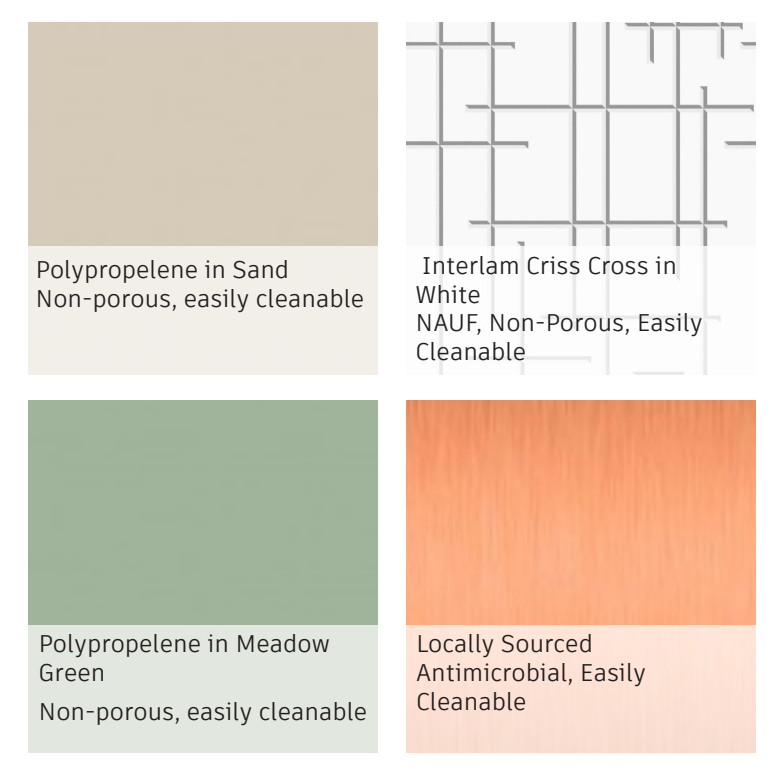
Reception

Materials

All of the materials used in the design are selected to consider both sustainability and COVID-19 safety considerations. All upholstery is bleach cleanable to allow for sanitization while maintaining the welcoming, warm, liveliness that the design called for. Flooring provided a means of wayfinding throughout the space by creating a neighborhood sidewalk that furthered the sense of community within the space. Specification of easily cleanable or antimicrobial surfaces such as laminate and copper promoted COVID-19 safety without compromising the design of the space. Recycled wood, glass, and concrete throughout the facility promoted environmental sustainability while contributing positively towards the aesthetic of the space.



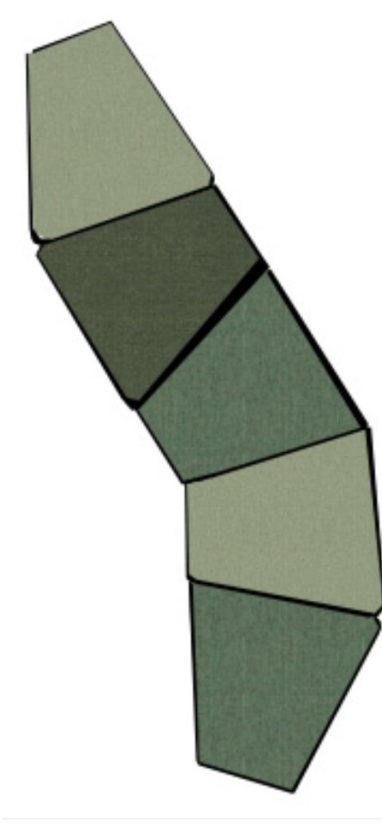
Dining Room



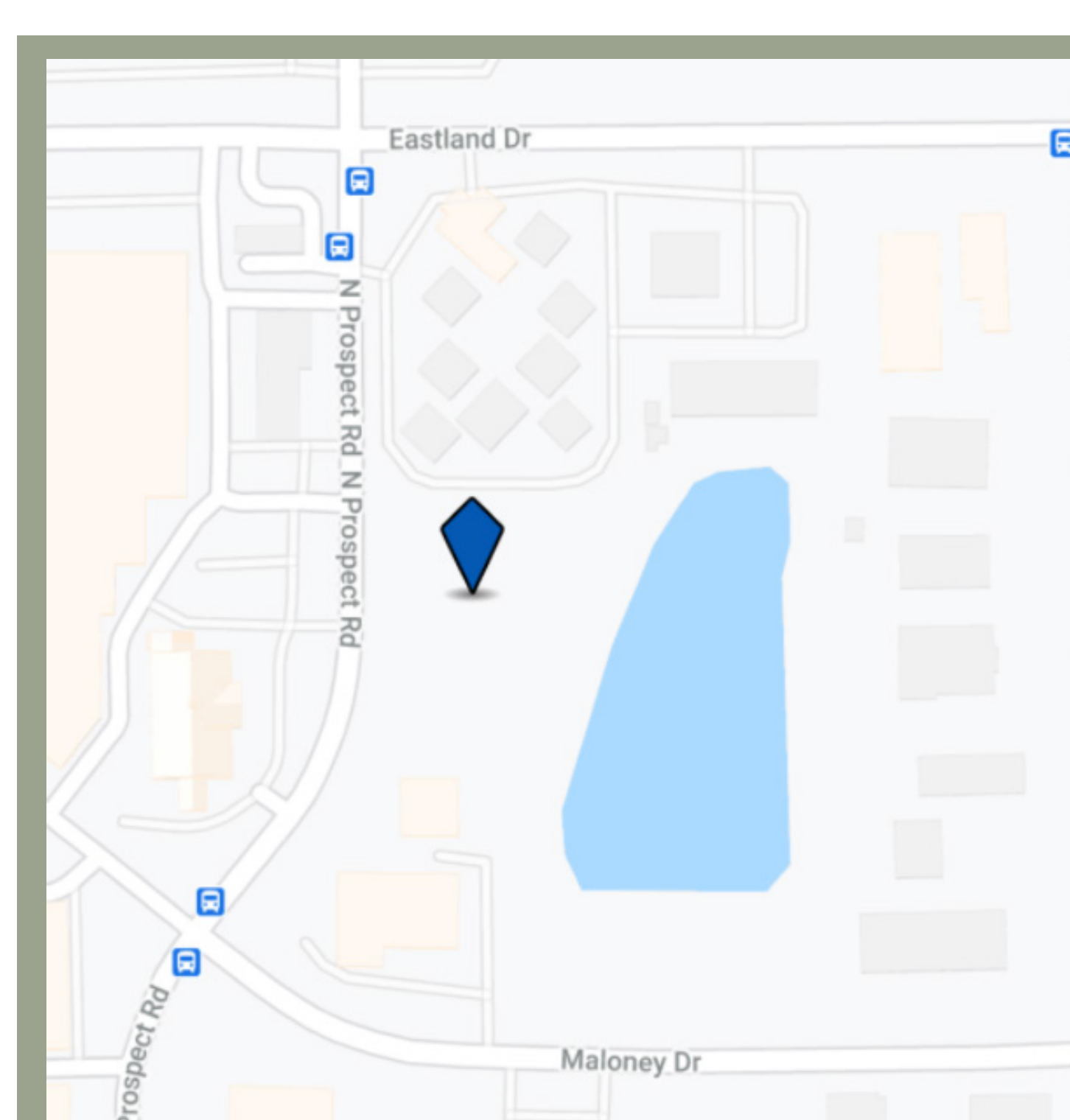
Post Office



Covered Seating

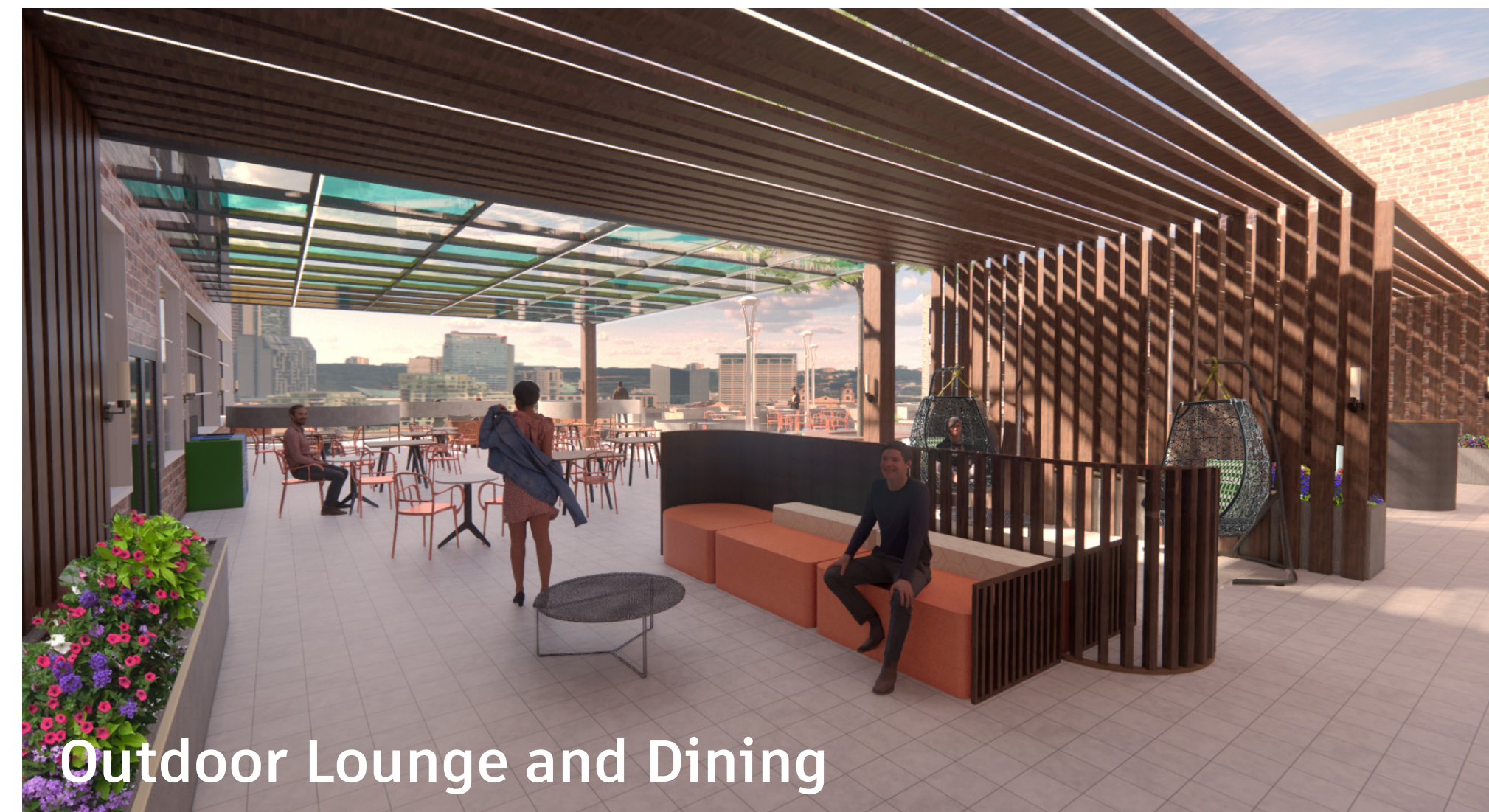


Naughtone- Ryhme
FSC certified
Low emissions

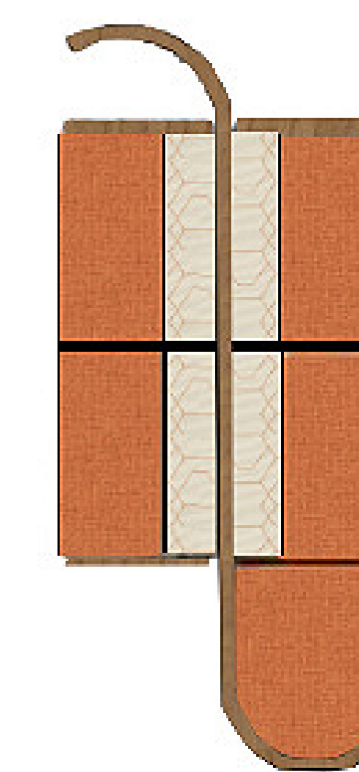


Site Location

Near the site location are various restaurants, stores, businesses, and neighborhoods that will allow for residents of Soldiers At Ease to be a part of the local community. There are also various options for public transportation in the surrounding area. The building has been oriented in a way that maximizes passive design.



Outdoor Lounge and Dining

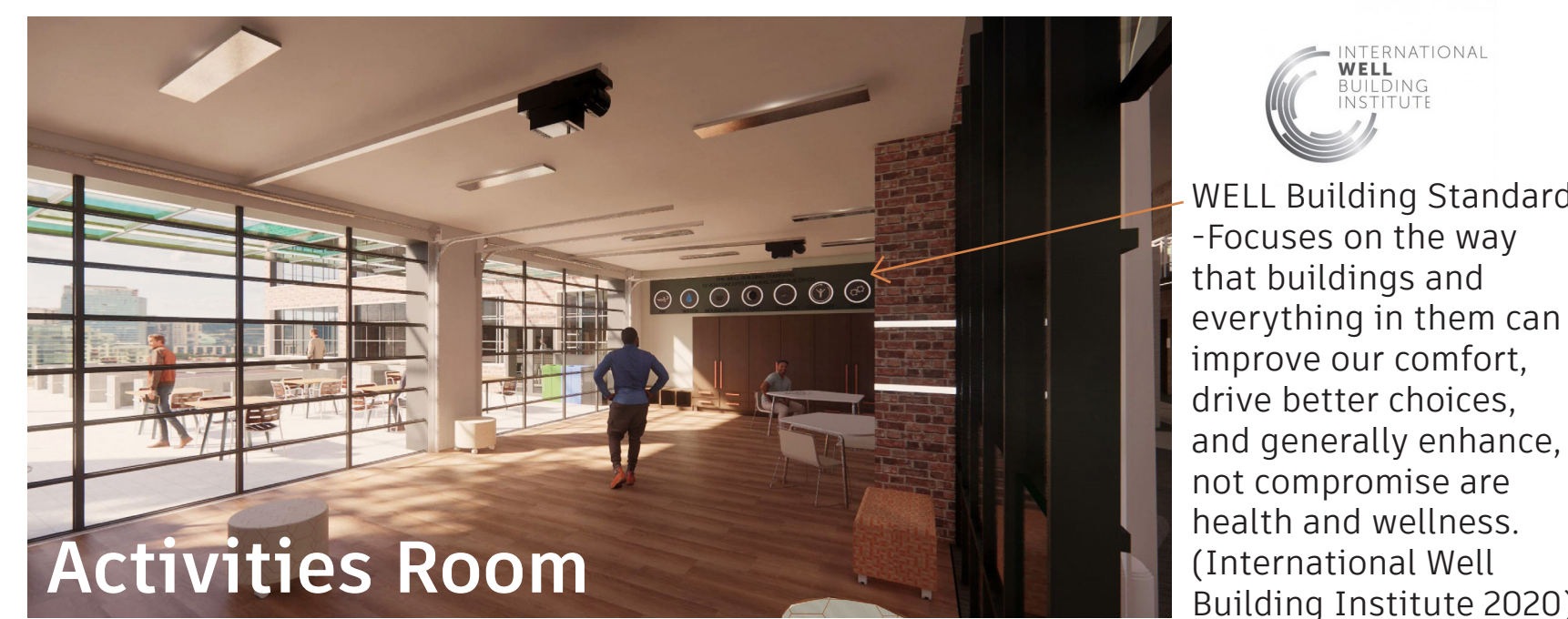
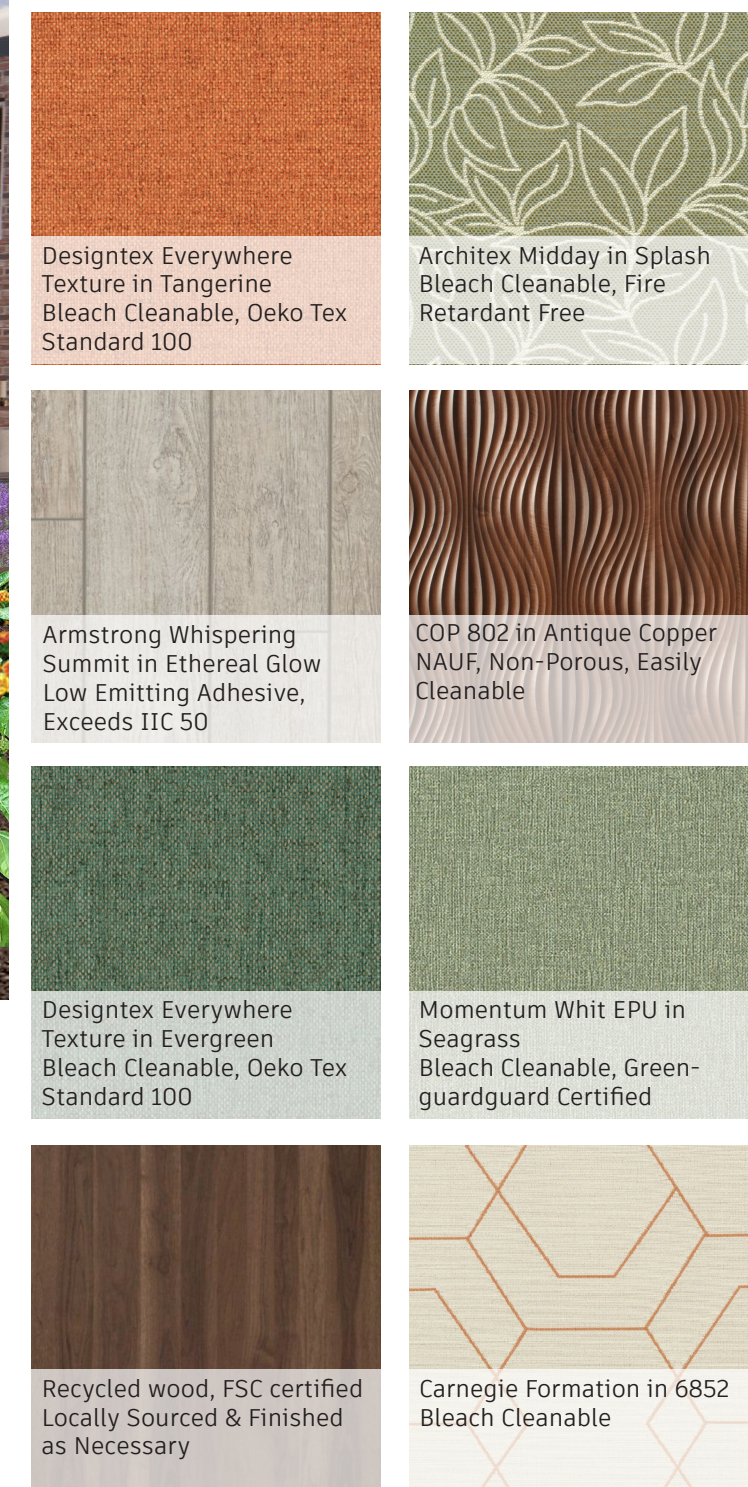


Zenith Interiors
Lapalma plus
FSC certified
Weather resistant



Garden View

Materials



Activities Room

INTERNATIONAL WELL BUILDING INSTITUTE
WELL Building Standards
-Focuses on the way that buildings and everything in them can improve our comfort, drive better choices, and generally enhance, not compromise are health and wellness. (International Well Building Institute 2020)



Firepits



SOLDIERS AT EASE

OCL - Rev Acoustic
Seamless Affixed Acoustic
Panel
Post consumer recycled
material



References

- Jakob, A. & Collier, L., (2013) How to make a sensory room for people living with dementia. Arts and Humanities Research Council. <https://journalofdementiacare.com/wp-content/uploads/2015/10/How-to-make-a-Sensory-Room-for-people-with-dementia.pdf>
- Woodcraft, S., Bacon, N., Calstor-Arendar, L. & Hackett, T., (2012) Design for social sustainability: A framework for creating thriving new communities. Social Life. http://www.social-life.co/media/files/DESIGN_FOR_SOCIAL_SUSTAINABILITY_3.pdf
- Office of Construction & Facilities Management, (2017) Design Guide: Mental Health Facilities [123-132]. Department of Veterans Affairs. <https://www.wbdg.org/FFC/VA/VADEGUID/dgmh.pdf>
- Farrell, J. & Weeks, R., (2019). Trauma Informed Spaces & Places [11-22]. Department for Children and Families. <https://dcf.vermont.gov/sites/DCF/files/OEO/training/2019/Trauma-Informed.pdf>
- Institute for Asia and Asian Diasporas, (n.d.) The symbolic meaning of the lotus flower. Binghamton University. <https://www.binghamton.edu/iaad/outreach/Meaning%20of%20the%20Lotus%20Flower%20-%20%20handout.pdf>
- International Well Building Institute, (2020). About International WELL Building Institute. <https://www.wellcertified.com/>



Creative/Flex Space



Apartment Facade