

COLLABORATIVE MILLENNIALS

CONCEPT STATEMENT

The design of Shared Spaces encompasses the revolutionary concepts of vertical learning and service learning with a focus on designing collaborative workspaces for the OKC business district. Shared Spaces embodies the collaborative work environment that millennials gravitate toward (Quenqua, 2013.) By applying these elements to the educational environment, the negative stigma commonly associated with classrooms can be eliminated, and a liberating environment can emerge by employing this model that both represents and facilitates vertical learning spaces. Additionally, this allows Shared Spaces to serve as a physical example for the community of what to expect from collaborative workspaces. The principles that cater to collaborative work spaces crossover and embody the nature of vertical and service learning pedagogies, as well as inspire “esprit de corps,” morale, in students, faculty, and all collaborators at Shared Spaces and within the Oklahoma City community (Delfino, 2011.) In collaborative work environments, colleagues collaborate with people of different age groups and experience levels, which is also seen in vertical and service learning.

The collaborative nature of the Shared Spaces environment will be further developed through invitations to multiple interior design programs apart from the affiliated university. These programs will blend to create additional diversity and collaboration within Shared Spaces, eliminating narrow schools of thought while addressing design problems, and inviting more opportunity for success.

The contemporary design with an industrial flair, or naturalistic urban, appeals to the millennial generation and introduces unique applications of materials. Creating a space that is design forward encourages the students to accomplish innovative endeavors to better the community, and ultimately progress the discipline that is interior design through practice and education.



FIRST FLOOR LOUNGE PERSPECTIVE



SECOND FLOOR STUDIO PERSPECTIVE

SHARED SPACES

SITE ANALYSIS

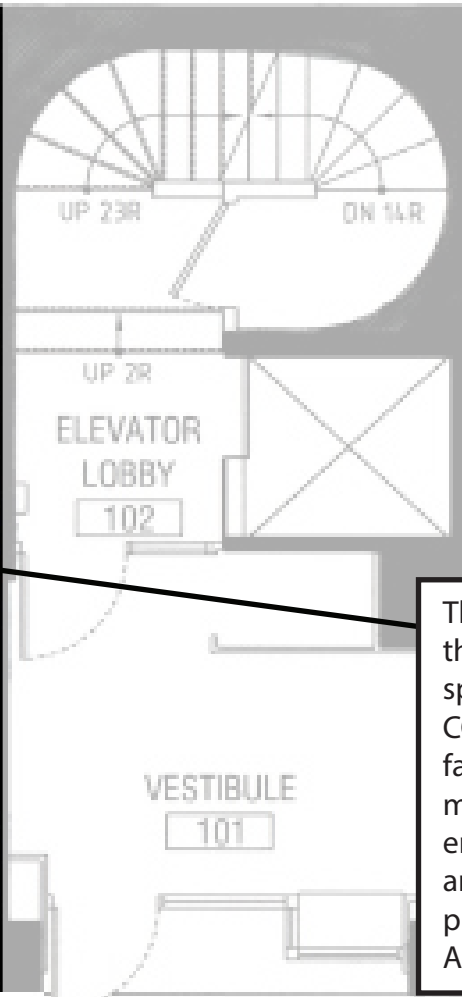
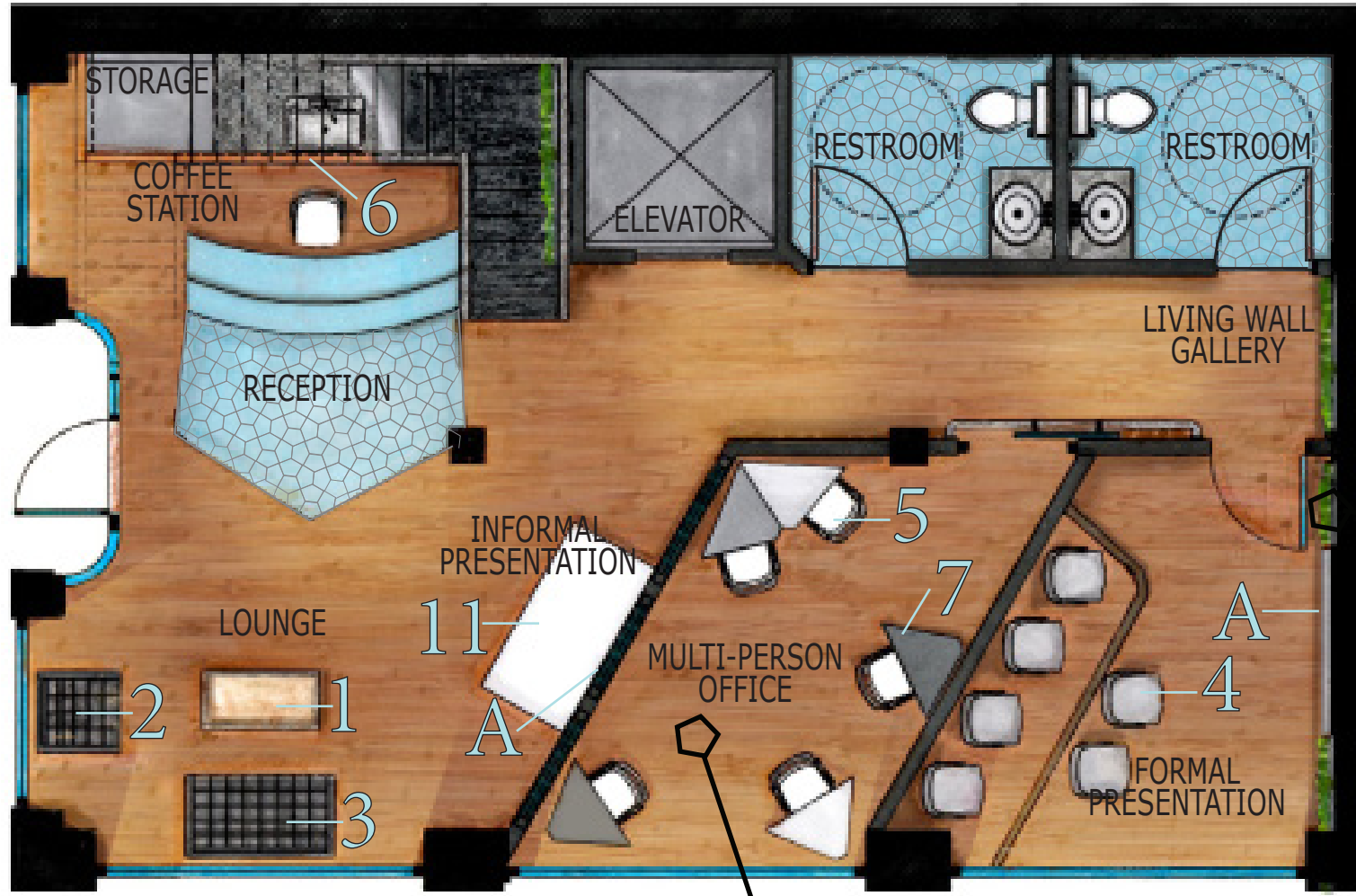
Shared Spaces, located in Oklahoma City, Oklahoma, is affiliated with the University of Oklahoma but will also facilitate students from Oklahoma State University, University of Central Oklahoma, and high school seniors from the surrounding areas. This location is located between all three universities, and can cater to high school seniors from the surrounding Oklahoma City area, including Arcadia, Bethany, Edmond, Midwest City, Moore, Mustang, Norman, and Yukon. Although the location provides convenient access to these CIDA accredited universities, and is available to numerous high schools, the location is still within 20 miles of Norman, where the University of Oklahoma's main campus is located. As Oklahoma City is working to revitalize its downtown area, the concepts of collaborative workspaces are paralleled to the city's efforts to evolve into a more modern environment. As the business district in Oklahoma City is thriving, changes to their workplaces encourage millennials to come and bring new ideas to assist the city's growth. Oklahoma launched the Downtown Strategic Initiative in 2010, and the Commercial District Revitalization Program in the fall of 2010 (“Downtown Planning.”) Both of these programs were initiated to encourage redevelopment and growth throughout the city, and provide proof that the Oklahoma City area is not only open to new ideas, but invites the opportunity to grow as a community. These characteristics provide an excellent canvas for the vertical and service learning efforts of Shared Spaces and encourages the community's further success in these initiatives.

REFERENCES:

Induced Earthquakes. (n.d.). Retrieved October 7, 2015, from <http://earthquake.usgs.gov/research/induced/>
Indoor Air Quality. (n.d.). Retrieved October 7, 2015, from <http://www.greenovergrey.com/green-wall-benefits/indoor-air-quality.php>
Quenqua, D. (2013). The Kids Are Alright: The next generation of entrepreneurs value authenticity and flexibility above all. Icon, 14-17.

Delfino, S., & Martin, R. (2011). Cocreate: A context for collaboration. Teknion.
Downtown Planning. (n.d.). Retrieved October 7, 2015, from <http://www.okc.gov/planning/downtown/>

FLOOR PLAN LEVEL 1 | SCALE: 3/16" = 1'-0"



The living walls throughout shared spaces cut down CO2 emissions in the facility and produce more oxygen which energizes occupants and therefore promote productivity ("Indoor Air Quality.")

SMART | Visual Collaboration Solution Smart Board



HP | Design Jet SD Pro Multifunction Printer



SHARP | MX-3140N Copier



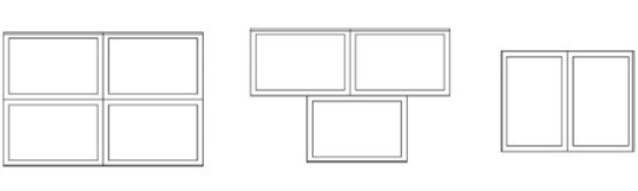
Porta-Trace | Porta-Trace / Gagne 36 x 48" Light Table



A versatile workspace | The custom office desks allow for mobility within the workspace while providing a flexible environment for faculty individual work or faculty collaboration.



A versatile workspace | The custom collaborative drafting tables allow for mobility and multiple configurations within the studio while providing a flexible environment for student and user personal work or group collaboration.



FLOOR PLAN LEVEL 2 | SCALE: 3/16" = 1'-0"



Knoll | Florence Coffee Table | Rectangle
The transparent quality of the glass table contributes to an open lounge area. Sustainability | Greenguard Indoor Air Quality (IAQ) Certification
Metal base with glass top



Florence Knoll Lounge Chair
Selected for a modern style component and allows for individual waiting or study. May accommodate collaboration when paired with settee. Sustainability | Greenguard IAQ Certification
Knoll Textiles: Hourglass in Wire



Florence Knoll Settee
The settee option for lounge seating provides opportunity for socialization within the lounge space. Sustainability | Greenguard IAQ Certification
Knoll Textiles: Hourglass in Wire



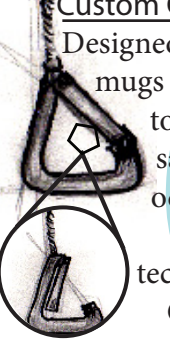
American Seating | Acton Auditorium Chair
This ergonomic swivel chair not only provides comfort for the user, but also allows for collaboration. Chairs swivel to the front when unoccupied. Momentum Upholstery: Basalt



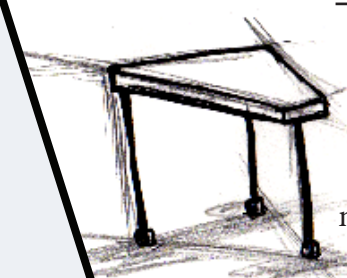
Steelcase | QiVi Collaborative Chair
Selected for ergonomic design that self adjusts for posture changes. Sustainability | Cradle to Cradle Certified (CM) Indoor Advantage Gold Green Guard Certified
Gaja: Apple Green Durango: Alabaster



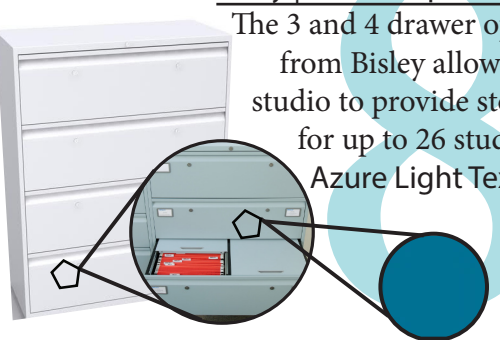
Custom Carabiner Hooks
Designed to secure hanging mugs in receptionist area to protect the health, safety and welfare of occupants due to the increases in plate-tectonic movement in Oklahoma (USGS).



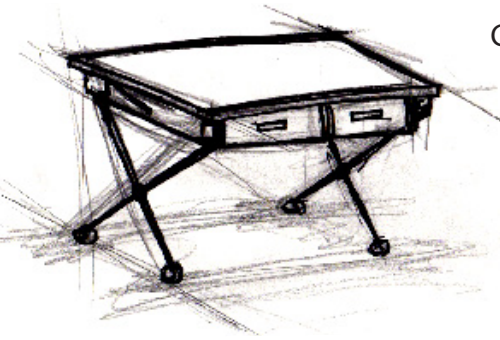
Custom Office Desks
The mobile triangular desks were designed to facilitate collaboration as well as independent work for faculty members. They serve as a learning example of module seating for the community.



Bisley | Drawer Space Unit
The 3 and 4 drawer option from Bisley allows the studio to provide storage for up to 26 students. Azure Light Texture



Custom Collaborative Drafting Tables
These custom drafting tables have wheels to facilitate movement throughout the space and encourage collaboration. Wheels have locks to ensure safety during stationary work, and drawers provide temporary storage for users.



Steelcase | Circa Modular Seating
Mirrors the curvilinear lines of the reception desk on the first floor creating a cohesive element between the two floors. Sustainability | Green Guard Certified
Gaja: Apple Green



Knoll | Pixel by Mark Krusin
Selected for a versatile collaborative surface that can adjust in height for various needs and may be angled up to provide additional presentation space during community events.



Armstrong | Bamboo | Red Fox
Provides a hard stable surface that is an appealing rapidly renewable resource, and is a low emitting material.

Datile | Ceramic Tile | Iceberg QH82
Provides a customizable shape to allow for the pentagon motif throughout the space.

DiamondLife | Galvanized Steel | Baseboard and Cornice
Provides a modern look and protect the base of the walls from potential damage.

Mannington | Colorscape Stair Tread | Square
Provides an attractive slip-resistant solution for the staircase.

Sherwin-Williams | Pro Industrial Acrylic Coating | Skyfall SW 9049 Evening Shadow SW 7662
Provides low VOC emissions and is GreenGuard Certified.