

SHARED

SPACES

LOCATION ANALYSIS

THIS URBAN LOCATION IS SITUATED AMONG HIGH RISE, MIXED-USE BUILDINGS AT THE INTERSECTION OF THREE WELL-DEFINED CITY NEIGHBORHOODS. THE CITY SERVES AS A LARGE MEDICAL HUB FOR THE REGION, WITH A TEACHING HOSPITAL, CANCER CENTER, AND AN AWARD-WINNING CHILDREN'S HOSPITAL. PATIENTS OF ALL AGES AND FROM ALL OVER THE STATE ARE TRANSFERRED TO THIS CITY'S HOSPITALS FOR INPATIENT AND OUTPATIENT SERVICES. MANY OF THESE RELOCATED PATIENTS ARE YOUNG CHILDREN WHOSE FAMILIES ALSO NEED TO RELOCATE DURING EXTENDED TREATMENT PLANS. THE CITY LACKS SUFFICIENT AFFORDABLE SHORT TERM HOUSING TO ACCOMMODATE THE NEEDS OF THESE FAMILIES. MEDICAL SITUATIONS ARE

ONLY MADE MORE DIFFICULT BY WORRIES OVER BILLS AND RENT WHILE TAKING TIME OFF WORK AND LIVING AWAY FROM HOME. HOWEVER, THESE FAMILIES ARE NOT THE ONLY PEOPLE IN THE CITY THAT COULD BENEFIT FROM THIS TYPE OF HOUSING. THIS AREA ALSO HAS A LARGER HOMELESS POPULATION THAN THE NATIONAL AVERAGE AND A RELATIVELY LOW MEDIAN HOUSEHOLD INCOME. MANY COMMUNITY RESIDENTS SIMPLY NEED A PLACE TO LIVE AT A REASONABLE PRICE WHILE GETTING BACK ON THEIR FEET. BY LOCATING SHARED SPACES WITHIN THIS URBAN COMMUNITY WE HOPE TO SERVE THOSE MOST IN NEED OF A STABLE HOME IN THEIR TIME OF TRANSITION.



DESIGN CONCEPT

SHARED SPACES IS DEDICATED TO BUILDING AN INTEGRATED DESIGN COMMUNITY AND COLLABORATIVE OUTREACH. LOCATED IN THE SOUTH SIDE REGION OF A METROPOLITAN CITY, SHARED SPACES PROVIDES A VERTICAL STUDIO EXPERIENCE FOCUSED ON RENOVATING URBAN HOUSING INTO SUSTAINABLE, SHORT TERM LIVING FOR FAMILIES IN NEED.

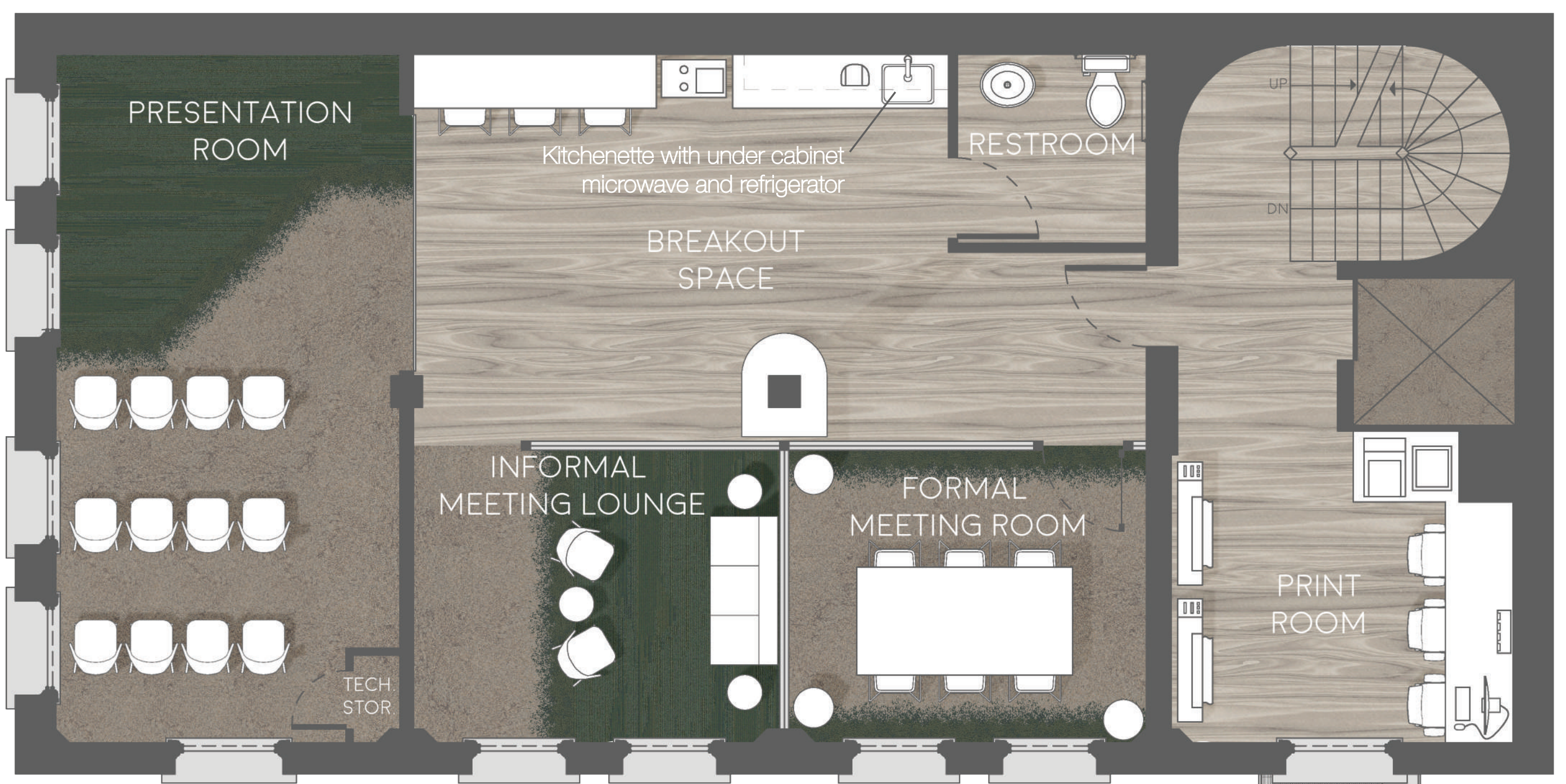
IN THIS VERTICAL STUDIO EXPERIENCE, ASPIRING INTERIOR DESIGNERS FROM HIGH SCHOOL AND COLLEGE WORK ALONGSIDE PRACTICING PROFESSIONALS – "ALLOWING FOR MORE OBSERVATION, MORE IMITATION, AND MORE MODELING TO OCCUR" (PETERSON AND TOBER, 2014, P. 2) - WHILE SOLVING REAL WORLD DESIGN PROBLEMS. THE VERTICAL STUDIO MODEL IMPROVES ACCESS TO PRACTICAL EXPERIENCE (LAVE, 1990), IMPROVED UNDERSTANDING OF INTERIOR DESIGN'S VALUE (IBID), AND SUPPORTS SOCIAL LEARNING (ORMROD, 2011).

THE DESIGN SOLUTION INCLUDES AN OPEN-CONCEPT STUDIO WORKSPACE ON THE MAIN FLOOR WITH PRIVATE OFFICES, MEETING SPACES, AND BREAKOUT SPACE WITH SMALL KITCHENETTE ABOVE. SUSTAINABILITY IS ALSO CENTRAL TO RESPONSIBLE INTERIOR DESIGN (KOPEC, 2009). IN THAT SPIRIT, THE DESIGN FOR SHARED SPACES WILL IMPLEMENT SUSTAINABLE PRINCIPLES THROUGH THE USE OF LOCALLY SOURCED MATERIALS AND PRODUCTS, AND ENERGY EFFICIENT APPLIANCES AND FIXTURES. SUSTAINABILITY WILL ALSO BE UTILIZED WHEN RENOVATING DILAPIDATED URBAN BUILDINGS INTO COMMUNITY HOMES.

THE SERVICES PROVIDED BY SHARED SPACES ARE OPEN TO ANYONE WITHIN THE COMMUNITY: NOT ONLY CHILDREN AND FAMILIES HERE TO ACCESS THE REGION'S TOP MEDICAL CARE, BUT ALSO THOSE WHO WOULD BENEFIT FROM SHORT-TERM AFFORDABLE HOUSING. ACCORDING TO THE NATIONAL HEALTH CARE FOR THE HOMELESS COUNCIL, " [THE EMOTIONAL AND PHYSICAL EFFECTS OF HOMELESSNESS LEAVE A LASTING MARK ON CHILDREN AND YOUTH DUE TO TRAUMA, POOR NUTRITION, AND DELAYED HEALTH CARE" (2014, PARA. 1). PROVIDING A STABLE HOME, EVEN ON A SHORT TERM BASIS, CAN IMPROVE THE WELL-BEING OF FUTURE GENERATIONS. THE SHARED SPACES INTEGRATED DESIGN SERVICES WILL BENEFIT NOT ONLY ASPIRING INTERIOR DESIGNERS BUT THE WELL-BEING OF THE ENTIRE COMMUNITY.

REFERENCES

- Children, Youth & Families. (2015). Retrieved December 17, 2015, from <https://www.nhchc.org/resources/clinical/tools-and-support/children-youth/>
- Kopec, D. (2009). Health, sustainability, and the built environment. New York: Fairchild Books & Visuals.
- Lave, J. (1990). "Situation Learning in Communities of Practice." In *Perspectives on Socially Shared Cognition*, edited by L. Resnick, J. Levine, & S. Teasley. Washington, DC: APA, 63-82.
- Peterson, M., & Tober, B. (2014). Institutionalizing the Vertical Studio: Curriculum, Pedagogy, and the Logistics of Core Classes with Mixed-Level Students. *Connecting Dots: Research, Education, Practice*, 138-144.
- Ormrod, J. E. (2011). *Human Learning*. Upper Saddle River, NJ: Pearson



FLOOR 2



FLOOR 1

