

Shared Spaces

Project Location: Denver, CO
 University Affiliation: University of Colorado at Denver
 Community Concerns Addressed: Homelessness

Concept

This Shared Space vertical learning studio is proposed to be located in Denver, CO with students, teachers, and design professionals addressing issues relating to the problem of homelessness in the community. The design is intended to convey a sense of harmony throughout the space, encouraging collaboration and community involvement.

The original brick walls and steel columns are left exposed to create a visual similarity and connection to the existing residential units. Industrial style furnishings made from reclaimed materials compliment the simplicity of the original architecture and establish a rustic and unassuming ambiance. Quality products and finishes in combination with subdued colors and furniture will allow the space to maintain a modest, yet sophisticated appearance.

This approach was inspired by the idea of designers working with local activists and stakeholders to create a stronger, more connected community. The colors and finishes palette includes warm and neutral tones of cream, brown, red brick, and wood, with accents of muted blues to establish a calming and welcoming environment. The feature wall in the reception area features a colorful watercolor depiction of the Denver skyline to celebrate the city and serve as a positive, welcoming sight for community members.

Research

- In January of 2015, 6,130 individuals were experiencing homelessness in the seven county Metro Denver area.
- Of those counted, 37% were women and 49% of "households" were families with children. Additionally, 25% of the individuals surveyed were newly homeless, meaning they have been homeless less than a year and this is their first time to experience homelessness.
- In 2014 there were 5,812 homeless men, women and children counted in the seven county Metro Denver area. This number includes only those persons who filled out a survey and their family members.
- Of all people who reported where they stayed the night prior to the survey, 12.5 percent or 724 people were unsheltered (living on the street, under a bridge, in an abandoned or public building, in a car, camping, etc.)
- Nearly one - quarter (24.0%) of all homeless - 1,392 persons - were considered newly homeless. People were considered newly homeless if they had been homeless for less than one year and this was their first episode of homelessness.
- Of the newly homeless, nearly three in five (58.7%) or 817 people were living in households with children
- When considering respondents and their family members, persons were somewhat more likely to be living in households with children: 53.1 percent with children versus 46.9 percent without children.
- 772 adults and children reported being homeless due to domestic violence.
- 699 respondents were chronically homeless. Of these, over three-quarters (78.5%) or 541 persons were male, 145 (21.0 %) were female and three people identified as transgender.
- Of all homeless persons, 830 were chronically homeless. HUD defines chronic homelessness as :
 - (1) having a chronic debilitating condition and
 - (2) sleeping in a place not meant for human habitation or in an emergency homeless shelter or in a safe haven, and
 - (3) having been homeless continually for one year or more OR having four or more episodes of homelessness in three or more years.
- There were 457 or 14.3 percent youth head of households in the 2014 PIT study (percentage based on the 3,200 respondents who provided age).

Works Cited:

- Homelessness & Poverty Statistics. (n.d.). Retrieved November 26, 2015, from <http://www.tgpdenver.org/homelessnessfaq>
- National Coalition for the Homeless. (n.d.). Retrieved November 26, 2015, from <http://www.nationalhomeless.org/factsheets/>
- PIT Report 2014. (n.d.). Retrieved November 26, 2015, from <http://mdhi.org/downloads/>
- Snapshot of Homelessness. (n.d.). Retrieved November 26, 2015, from http://www.endhomelessness.org/pages/snapshot_of_homelessness



Studio



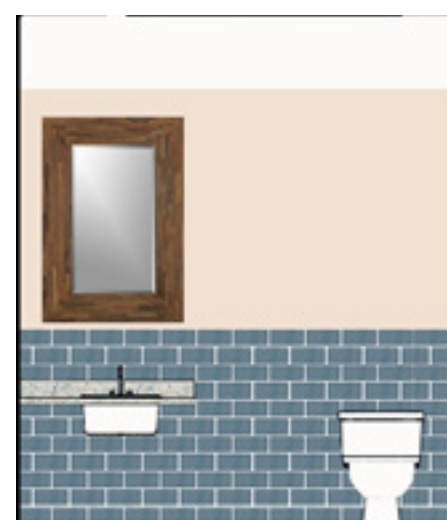
The Building



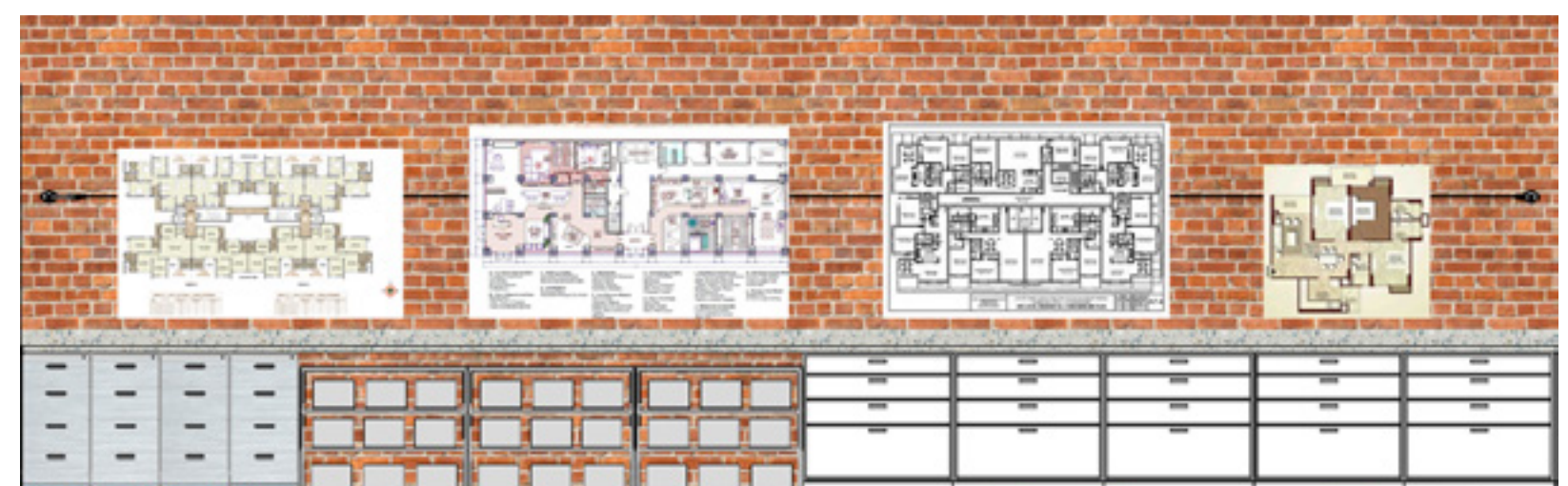
Community Meet and Learn



Reception

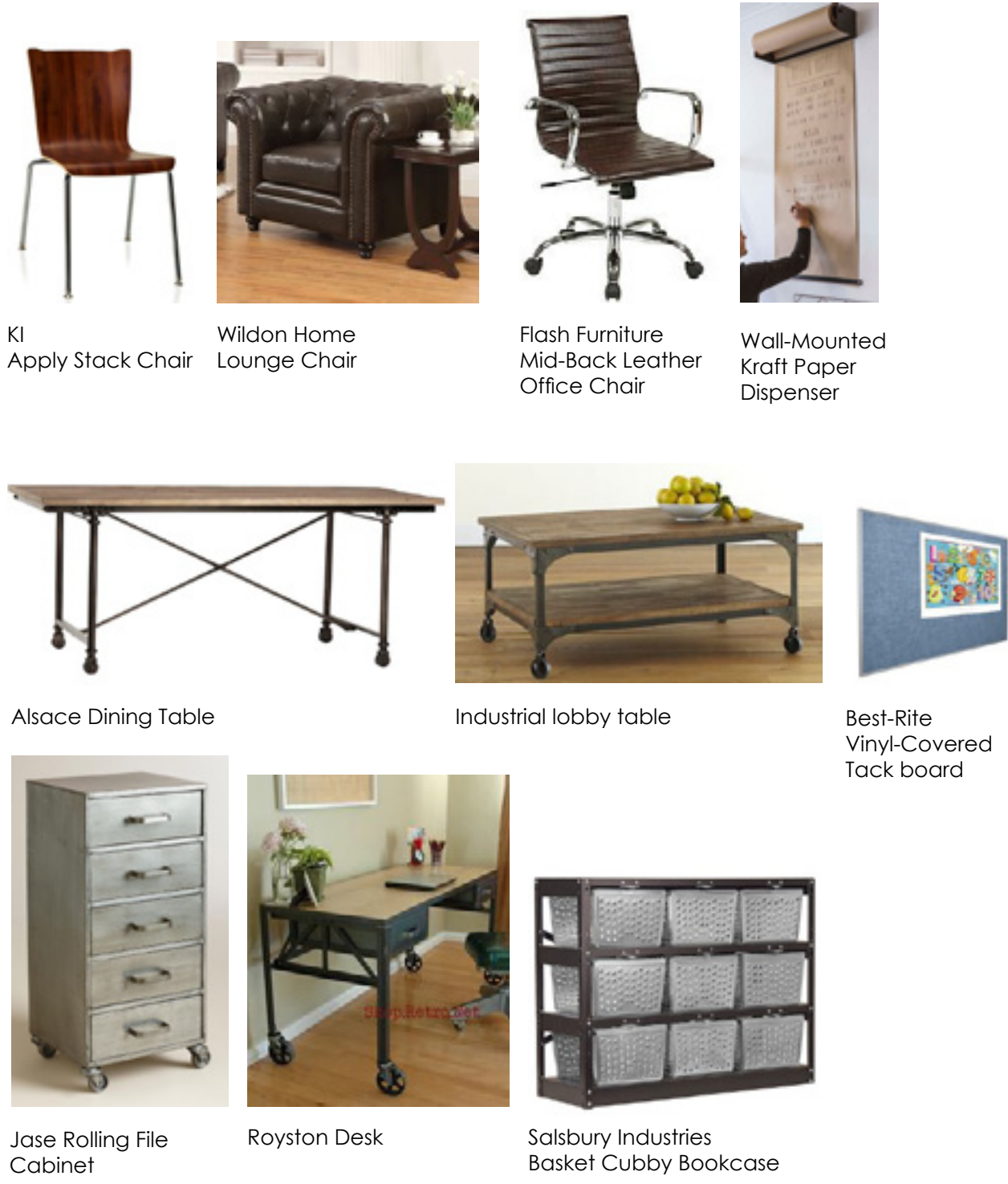


Restroom Elevation
1/4th Scale

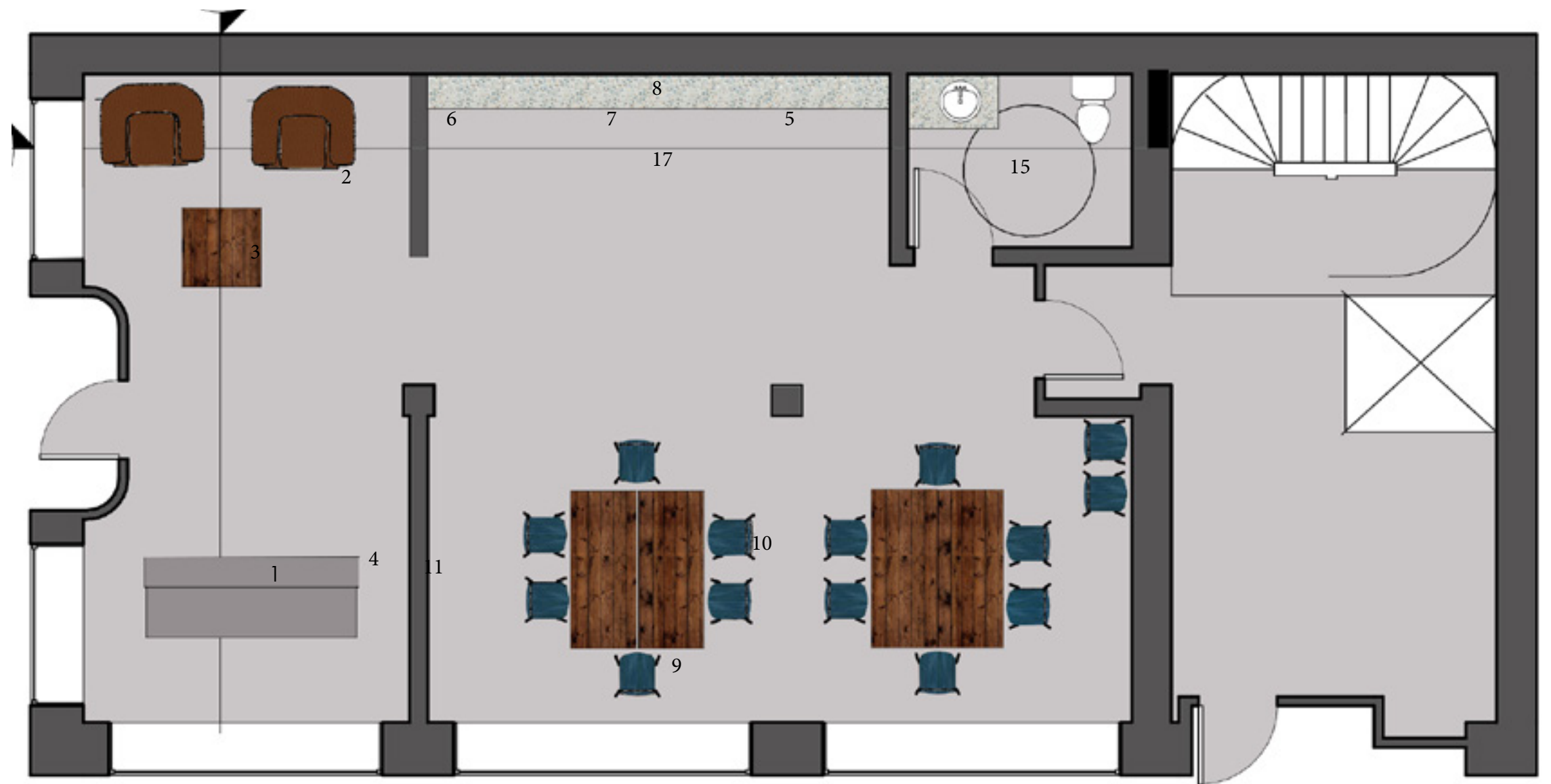
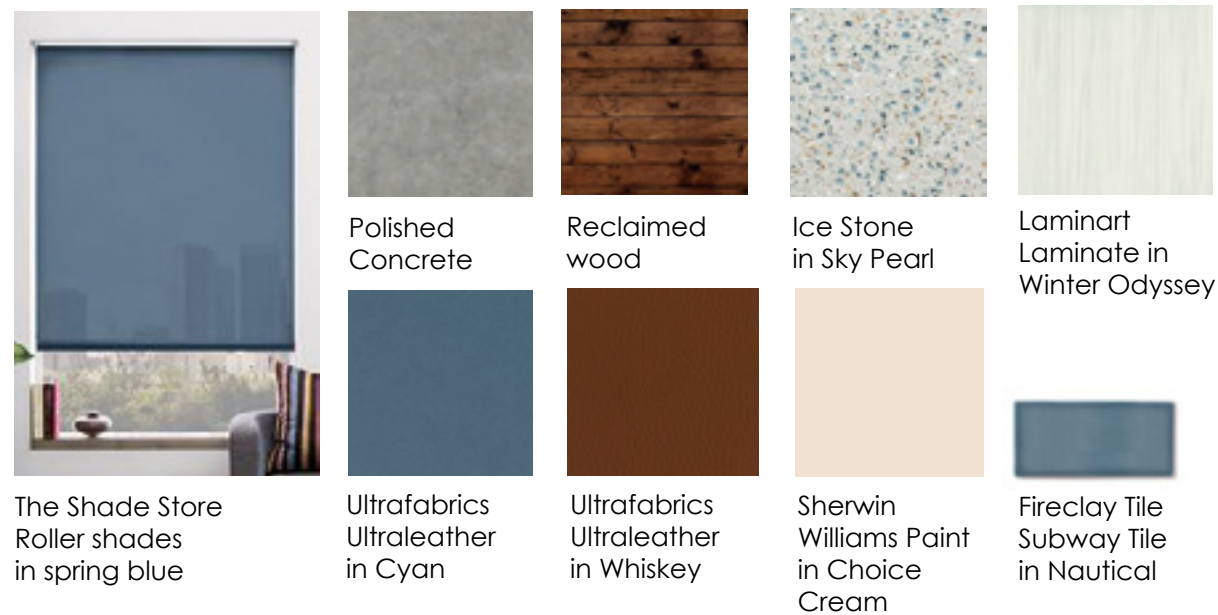


Community Learn Elevation
1/4th Scale

Furniture



Finishes and Materials



Furniture Plan
level 1
1/4th scale

Community Greet

- 01. Reception desk
- 02. Wildon Home lounge chair
- 03. Industrial lobby table
- 04. Feature wall with city skyline

Community Learn

- 05. Cabinetry
- 06. Jase rolling file cabinet
- 07. Salisbury industries bookcase
- 08. Pinup wire

Community Meet

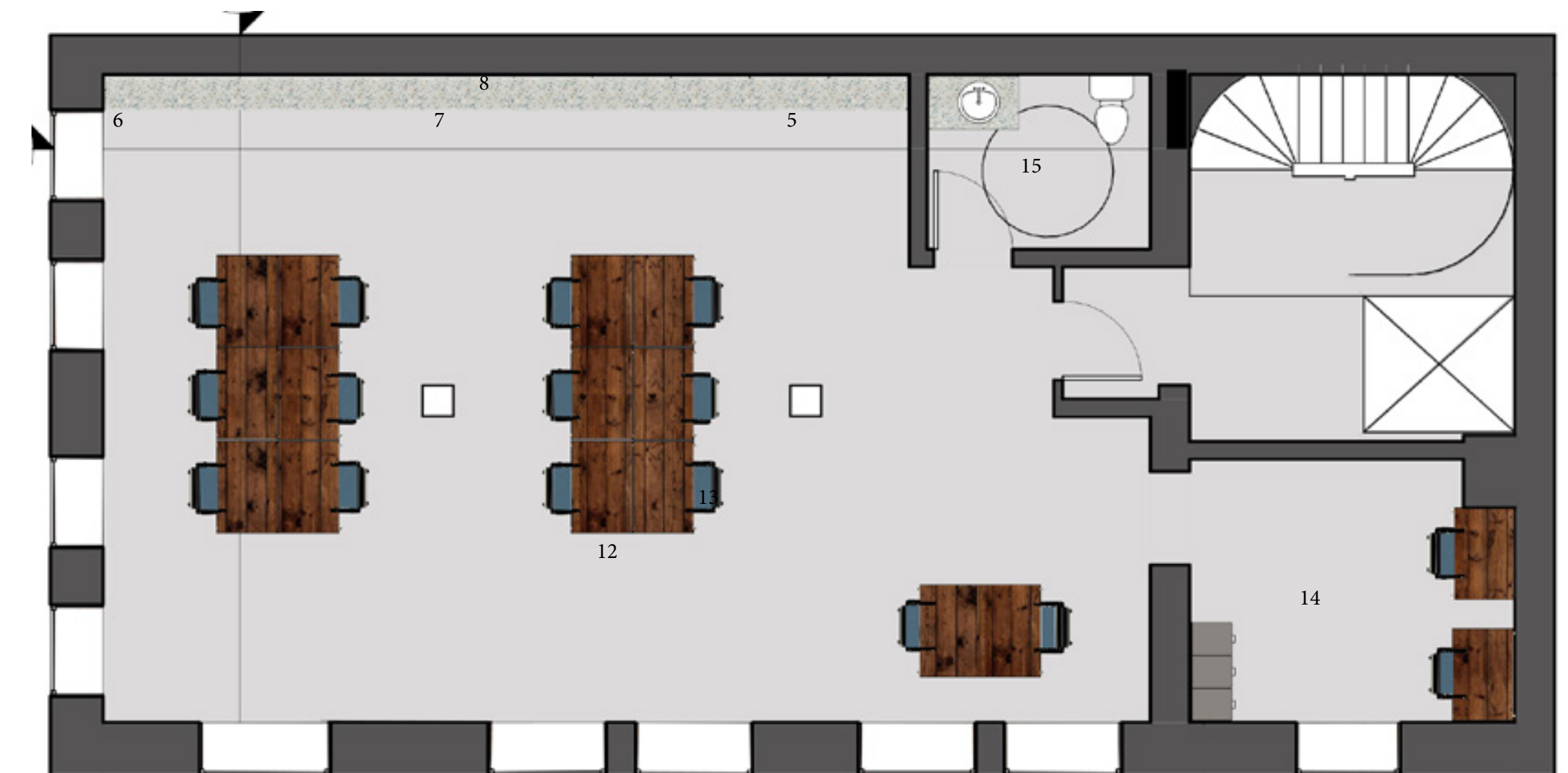
- 09. Alsace dining table
- 10. KI apply stack chair
- 11. projection wall

Studio

- 12. Royston desk
- 13. Flash furniture chair

Support Spaces

- 14. flexible, multi person faculty office
- 15. restrooms



Furniture Plan
level 2
1/4th scale