

# SHARED SPACE

## VERTICAL STUDIO | SERVICE LEARNING

SAN FRANCISCO, CA

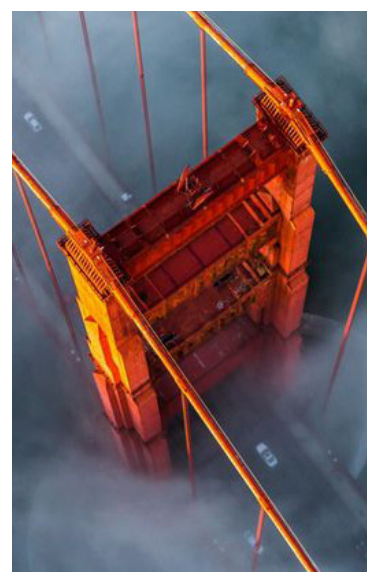
### LOCATION ANALYSIS

San Francisco, California is a growing “innovative incubator” located on the San Francisco Bay (“San Francisco”, 2015). The densely populated city continues to grow as it attracts innovators willing to push the envelope (“San Francisco”, 2015). Since the last decade, San Francisco became home to many start-up companies and technology offices, and many people employed at Silicon Valley’s technology giants (“San Francisco”, 2015). The city is known internationally for its acclaimed art and architecture and is home to some of the nation’s top design programs, as well as a large number of interior design professionals (“San Francisco”, 2015). The shared space vertical studio will be with affiliation with San Francisco State University interior design students. The school offers a Bachelor’s of Interior Design within the College of Health and Social Services. The studio will exercise the blend of interior design skills with the program’s social welfare focus.

### COMMUNITY CONCERN

San Francisco holds the highest rents in the U.S. and does not have enough housing for it’s inhabitants (Rosoff, 2015). The city’s unaffordable and scare housing market has resulted in a highly visible homeless population. The city’s failure to build enough housing has caused affordable housing to be so insufficient, that the access to public housing has a waitlist (O’Connor, 2015). To further the housing issues, many current public housing options are old and debilitated. Children living in the city’s old public housing have increased visits to the emergency room (O’Connor, 2015). With the low-income population being essential to the city, they deserve to have safe housing (O’Connor, 2015). The housing issue needs to be addressed through generating well-designed, affordable housing and renovating the unsafe existing housing.

O’Connor, L. (2015, January 8). One of America’s most unaffordable cities reopens public housing waitlist. *Huffington Post*. Retrieved from [www.huffingtonpost.com](http://www.huffingtonpost.com)  
 Rosoff, M. (2015, October 8). This interactive map shows how unaffordable San Francisco has become since 2010. *Business Insider*. Retrieved from [www.businessinsider.com](http://www.businessinsider.com)  
 San Francisco. (2015, October 20). In Wikipedia, The Free Encyclopedia. Retrieved 17:38, October 8, 2015, from [https://en.wikipedia.org/wiki/San\\_Francisco](https://en.wikipedia.org/wiki/San_Francisco)



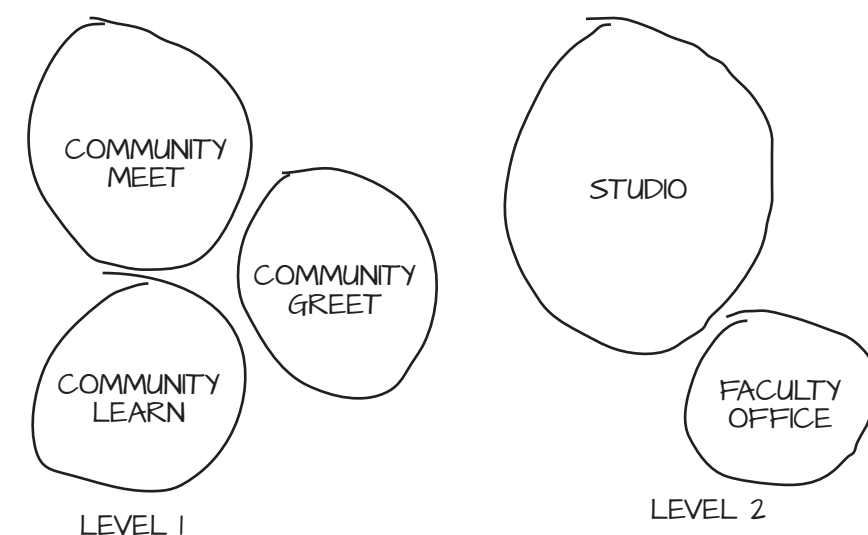
Golden Gate [Photo]. (2014). Retrieved from <http://www.fromupnorth.com/best-photography-of-2014/>

### DESIGN INSPIRATION



Jazberry Blue (Artist). *San Francisco* [Graphic design]. Retrieved from <http://naldzgraphics.net/inspirations/maps-colorful-abstract-art/>

### COMMUNITY LEARN // COMMUNITY GREET



### CONCEPT STATEMENT

San Francisco State University’s Shared Space will provoke innovation and break the definition of a typical learning environment (Strickland & Hadjiyanni, 2013). The urban design will be unlike a traditional educational setting, providing students with exposure to a professional design environment. The collaboration between students of multiple skill levels and design professionals will be supported in a vertical studio that encourages new learning opportunities through observing and teaching. The studio will exist to focus on addressing the city’s housing crisis through a service-learning component. To respond to the issue, the space will promote the collaboration of interior design students and professionals with the City Housing Department to develop and renovate housing for San Francisco’s low-income families. The service learning experience will allow students the opportunity to solve local design problems and work with the city for learning on both sides. The space will communicate the design services that students will contribute to the city through the display of studio work and incorporating flexible furniture elements. The community meeting area will be a playful space that supports both formal presentations and organic design charrettes. Golden Gate Bridge inspired hues are diffused throughout the space, as orange is proven to promote a feeling of equality. This will aid in balancing the mix of multiple levels of students, professionals, and city officials. The welcoming design is further supported through the use of raw materials, an entry set up like a living room, and a furniture-like reception desk. As the space resides in a city known for being on the forefront of the newest innovations, it follows current trends in sustainability through the use of re-used plywood, LED lighting, and recycled content textiles. The purposeful design of the space is to assist users’ environmentally shaped identity, allowing them to successfully reach design solutions (Strickland & Hadjiyanni, 2013).



### COMMUNITY MEET

**7,539 PEOPLE IN SAN FRANCISCO ARE HOMELESS.**

**58% OF THOSE ARE UNSHELTERED.**



### STUDIO

Applied Survey Research (2015). San Francisco homeless point-in-time count & survey comprehensive report. Retrieved from <http://sfgov.org>

Strickland, A. & Hadjiyanni, T. (2013). “My school and me” - Exploring the intersections of insiderness and interior environments. *Journal of Interior Design*, 38(4), 17-35.

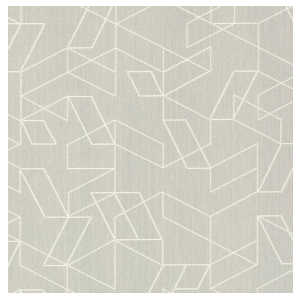
# SHARED SPACE

## VERTICAL STUDIO | SERVICE LEARNING

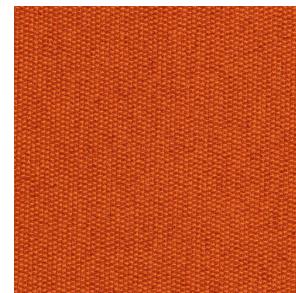
SAN FRANCISCO, CA



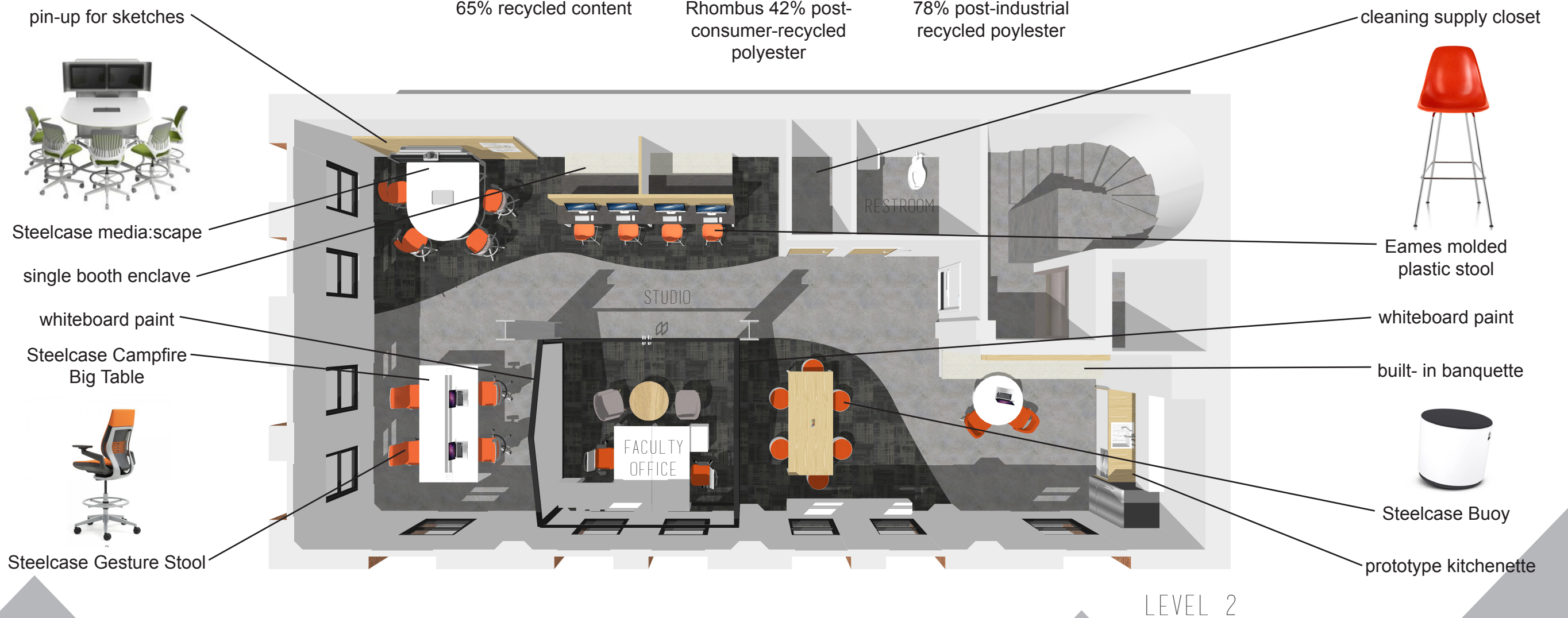
Interface Aerial  
65% recycled content



Maharam Tek Wall Rhombus  
42% post-consumer-recycled polyester



Maharam Messenger  
78% post-industrial recycled polyester



STUDIO



COMMUNITY GREET