



SELF CIRCLE

CONCEPT

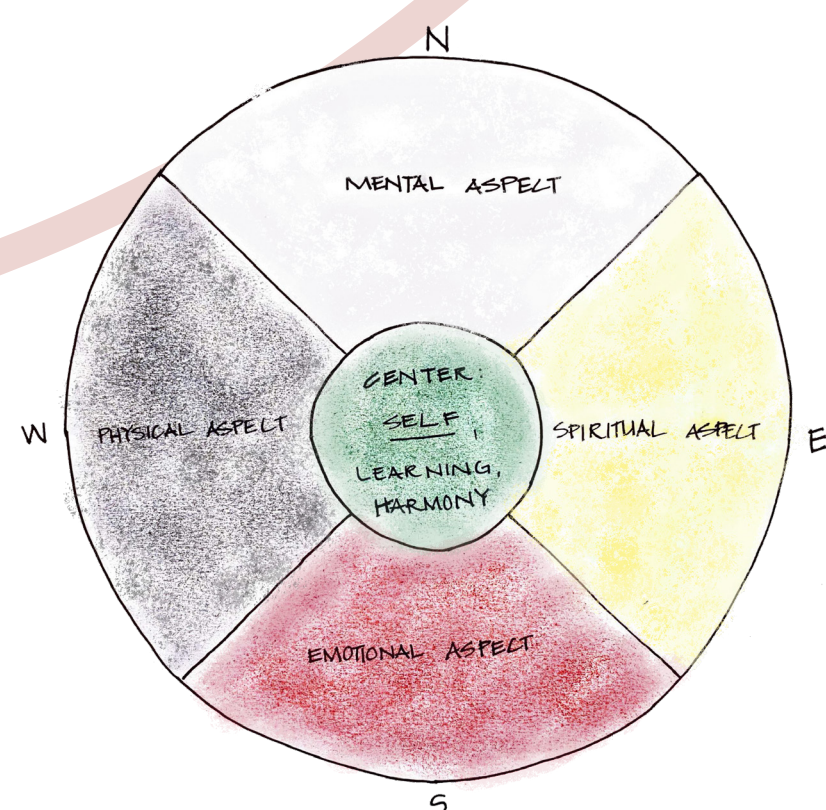
Inspired by the tenets of Salish First Nations groups, the design of this center strives to nurture a persons' sense of self. In line with First Nations beliefs, a connection to materials from the land supports this journey to deepening the bond to your truest self. The pure qualities of a circle, a repeated motif in First Nations culture, inspires equity and respect between all individuals regardless of their status or progress to achieving equilibrium. Movement throughout the space echoes this levelness and clarity. At its core, an emphasis on balance within the design is what fosters this wholeness and harmony within a person.

CULTURAL APPROACH TO THE SPACE

By taking a human-centered approach and looking towards First Nations knowledge to reinforce research, balance and holistic harmony are established as essential principles. Embodied in resultant cultural practices is a belief in change, because change further promotes balance and harmony within an individual.

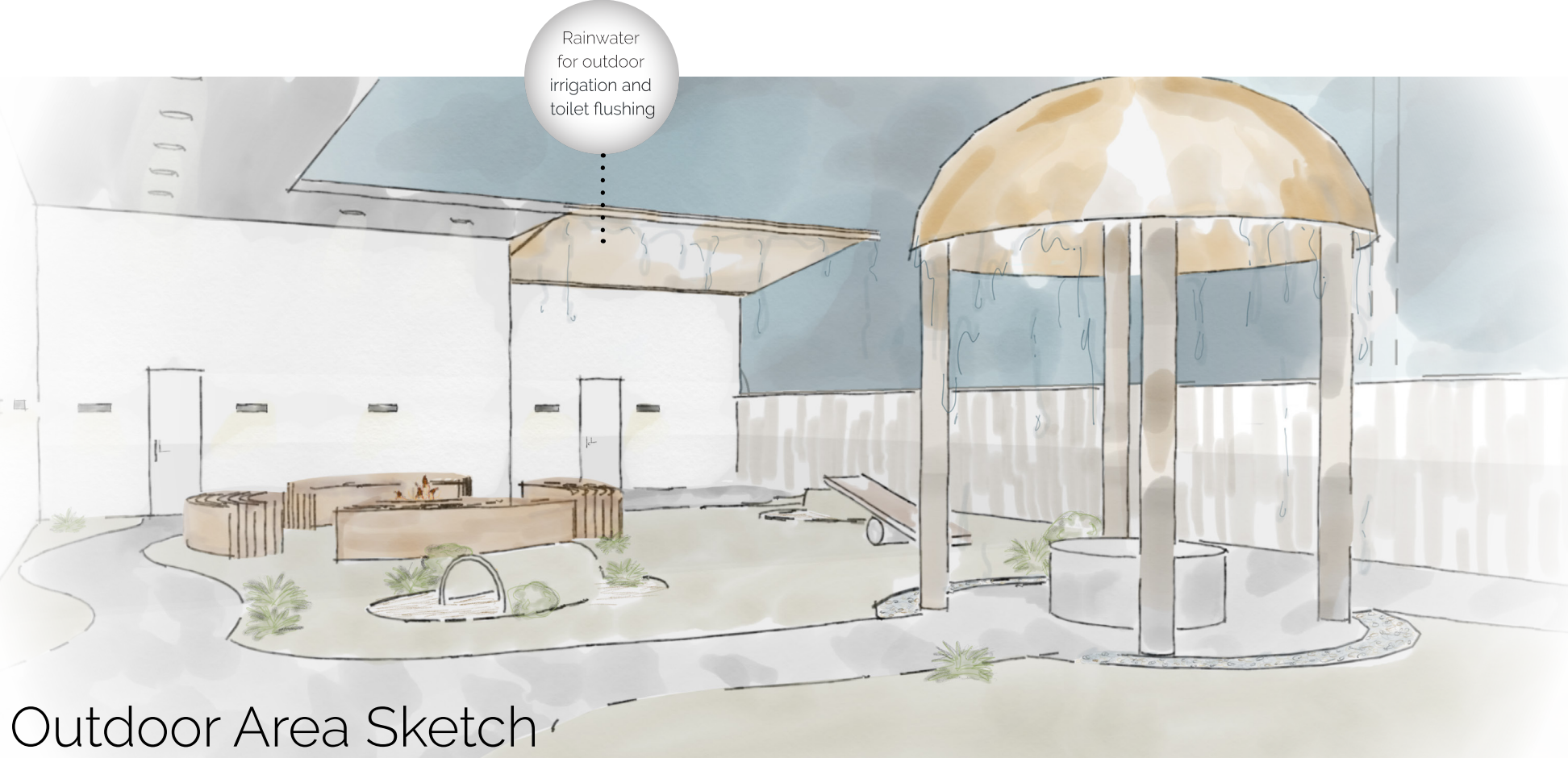
Among this, First Nations believe that body-mind-spirit-heart is central to individual, family and community health. The balance of these elements work in harmony to stimulate adaption to life's moments and support the whole of someone's being.

While exploring this connection, the medicine wheel becomes a prominent concept. A medicine wheel traditionally serves as a metaphor to represent the continuous interaction of all aspects of someone's being and their connection to the natural world. The circle shape is also symbolic of the awareness and power within an individual as well as the power of the world.



LOCATION - Powell Street & Heatley Avenue

This location was chosen for its proximity to support housing, health clinic, food, cultural services, non-profit legal services, ambulance station, spiritual services and a life skills center.



Outdoor Area Sketch

THE ISSUE

Based on experiential research with several organizations such as Salvation Army and United Gospel Mission, it's evident that homeless populations face a multitude of challenges ranging from lack of personal shelter, warmth, sustenance and safety.

One factor that prevents individuals facing homelessness to seek the help they need is lack of personal hygiene. Without the capability to practice hygiene, people in this situation can start to lose their place in society making it increasingly difficult to go to others for support. Homeless individuals can also struggle with shame of being judged and rejected by society. Homeless people are often perceived as 'dirty' or 'diseased' and scorned by the people who pass them on the street, but the lack of sanitation and hygiene has set this group up for failure.

It is incredibly challenging to maintain a sense of dignity or even health and wellbeing without the ability to wash your hands, clothes or brush your teeth. For this reason, a centre that caters to the basic needs of every human and provides hygiene services can benefit the homeless population greatly in becoming active members of their community again.

GOALS

- Promote positivity, respect and dignity
- Provide approaches to reconnect with society
- Support the fundamental needs of all human beings
- Break down social barriers with an inclusive approach free of judgement

REFERENCES

Behrens, M. (n.d.) A Review of Research: Designing the Built Environment for Recovery from Homelessness. A Review of Research: Designing the Built Environment for Recovery from Homelessness. Design Resources for Homelessness. Retrieved from www.designresourcesforhomelessness.org

Dickinson, J. I., Stafford, K., Klingenberg, K., Bickel, N., Boyd, C., & Dreyer, M. (2016). The Design and Testing of a Student Prototyped Homeless Shelter. *Journal of Interior Design*, 42(3), 53-70. doi: 10.1111/joid.12087

Flick, U.W.E. (2007). Homelessness and Health. *Journal of Health Psychology*, 12(5), 691-695. doi: 10.1177/1359105307080576

Hygiene for the Homeless Canada. (n.d.). Retrieved from https://www.homelessupportcanada.com/.



Waiting Area Perspective

- Dropped ceiling detail serves as acoustic barrier
- LED Lamps Throughout
- Phone Charging Lockers
- Books, Movies & Games Storage

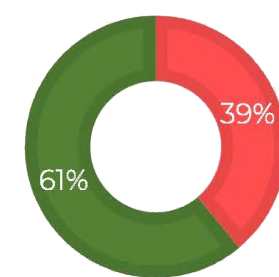


Floor Plan

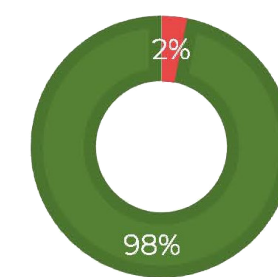
RESEARCH

Based on statistics within the community, there is a disparity between ethnic groups affected by homelessness. For this reason, this personal hygiene center appreciates First Nations cultural significance in helping to create an inclusive, all-encompassing design.

First Nations/ Aboriginal in Homeless Population



First Nations/ Aboriginal in General Population



PSYCHOLOGY OF THE SPACE

Derived from the components of Self-Concept by Human Psychologist Carl Rogers, a person evaluates themselves based on 3 factors:

- Self-Image (perception of yourself)
- Self-Ideal (person you envision being/becoming)
- Self Esteem (extent to which you value yourself)

Based on primary sources involved with the population being served at this facility, how you perceive yourself has weight in the way you interact with others. In this way, working to elevate the way an individual may think about themselves can be transformative in their life.

Kaminski, J., & Currie, S. (n.d.). First Nations Pedagogy Online. Retrieved from http://www.firstnationspedagogy.ca/.

Kesler, L. (2018). *Indigenous Peoples: Language Guidelines*. Indigenous Peoples: Language Guidelines (Vol. 2.0). Vancouver, B.C.: The University of British Columbia.

Labelle, L., & Peden, S. (n.d.). *Integrating Aboriginal Perspectives into Curricula*. Manitoba Education and Youth. Retrieved from www.edu.gov.mb.ca

Pable, J. (2007). Interior Design Homeless shelter design: a psychologically recuperative approach. *Journal of Interior Design*, 32(3), 93-108. doi: 10.1111/j.1939-1668.2007.tb00543.x

Rogers, C. R. (1959). *A Theory of Therapy, Personality, and Interpersonal Relationships: As Developed in the Client-Centered Framework*. *Psychology: A Study of a Science*, 3 (Formulations of the Person and the Social Context).

FURNITURE SELECTIONS



CHADWICK MODULAR SEATING SYSTEM

- Circular configuration
- Charging at base
- Easy cleanout



STEPS FREESTANDING TABLE

- Offset base
- Certified Indoor Air Quality GOLD
- Provides infection control



SOPHORA LOUNGE CHAIR

- Greenguard certified
- Removeable covers
- Antimicrobial & easy clean out
- Non-marring glides

MATERIAL SELECTIONS



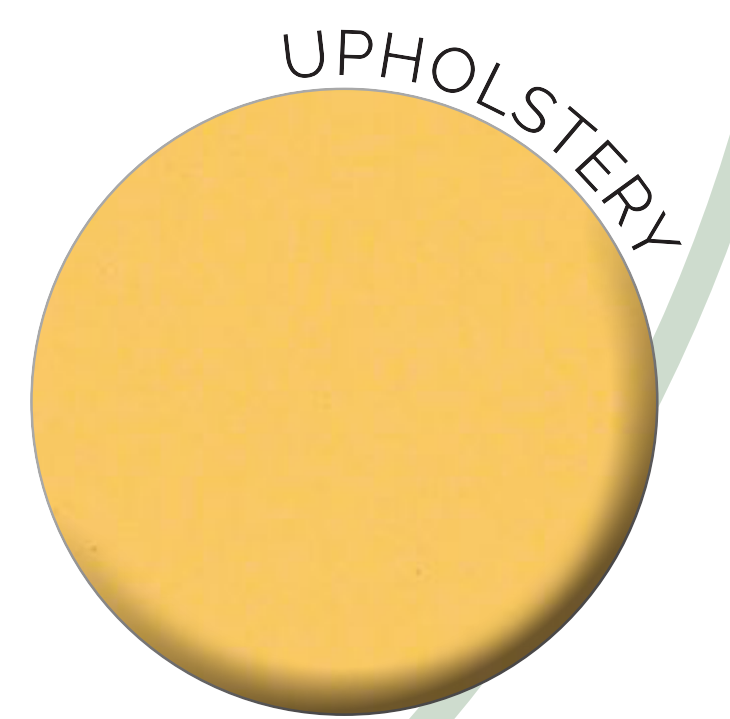
MILLWORK WOOD SPECIES:
Douglas Fir & Western Hemlock

- Locally Sourced



LINOLEUM SHEET FLOORING:
Marmoleum

- Resilient and durable for heavy traffic
- Made up of 97% raw materials, most that are rapidly renewable materials and have 43% recycled content
- CO2 neutral

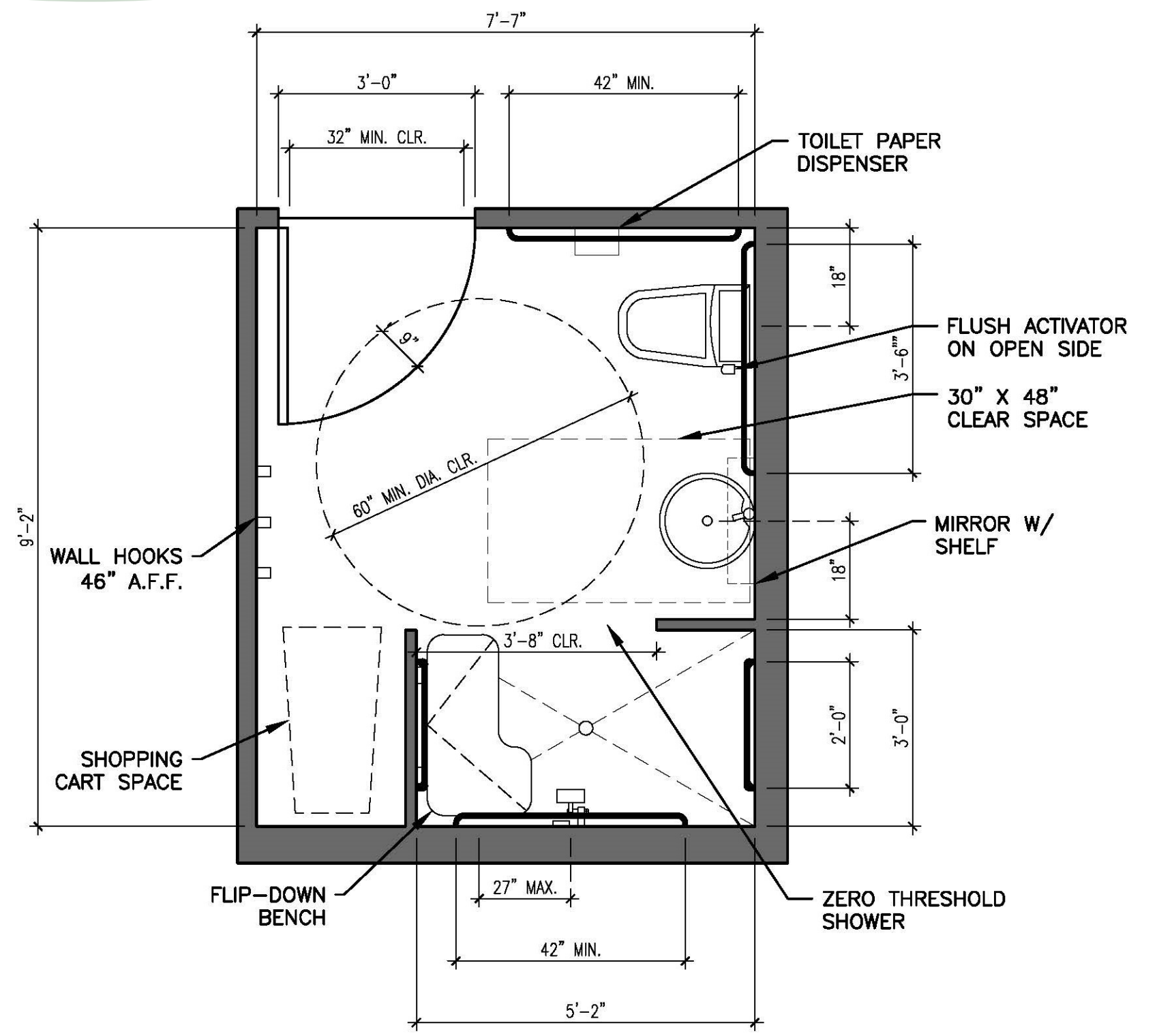


SILICONE UPHOLSTERY:
Maharim & Momentum Textiles

- Durable & easy to clean
- Moisture barrier & antimicrobial
- GreenGuard Certified



Shower Support Perspective



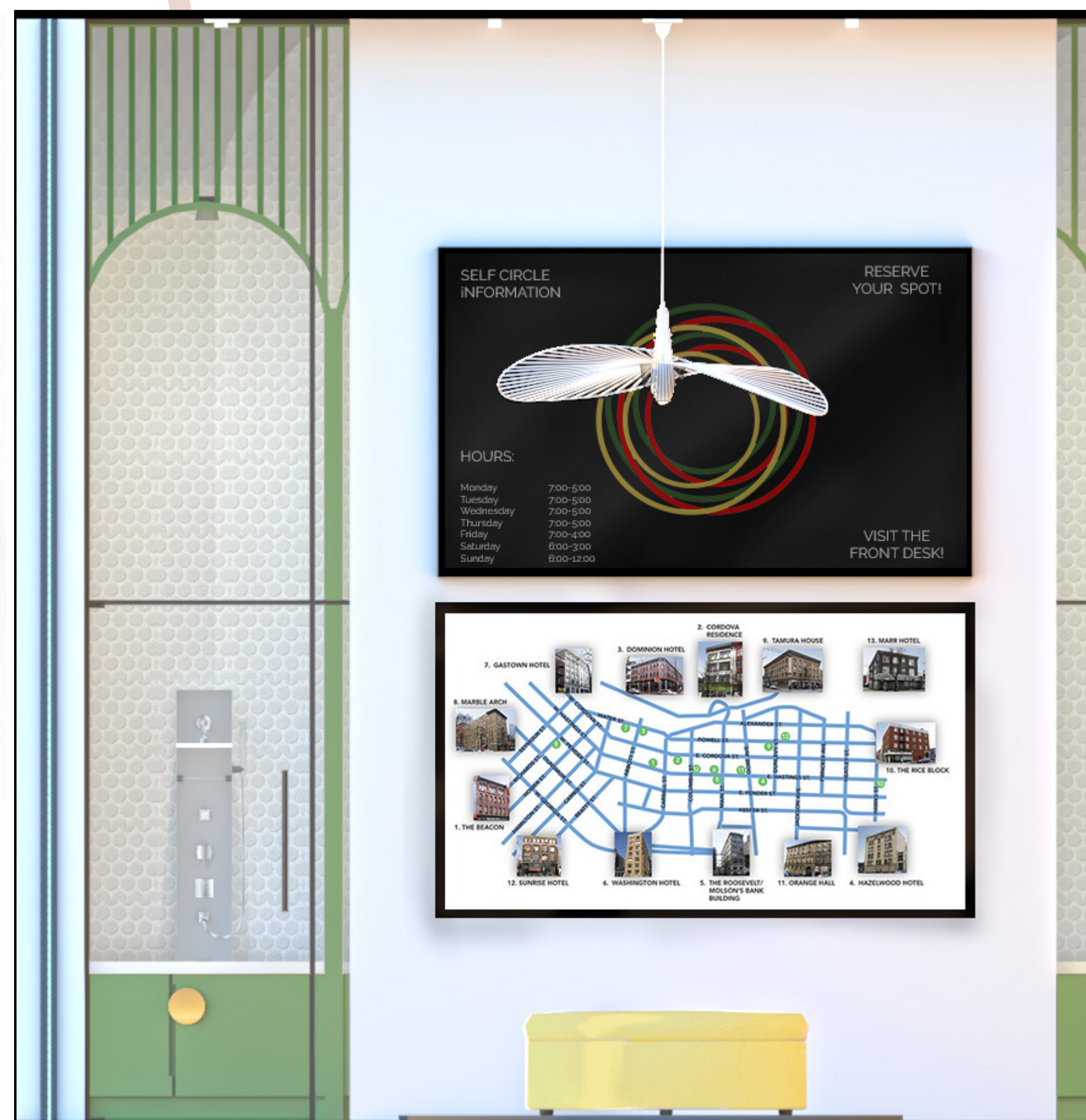
ADA Washroom Analysis



Interior Section



Reception Perspective



Community Board Elevation