

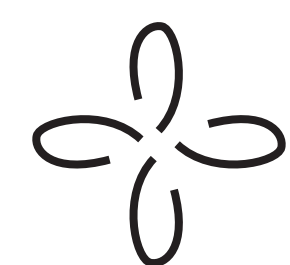
R + D

RESPECT + DIGNITY

GOALS



privacy



confidence building



autonomy

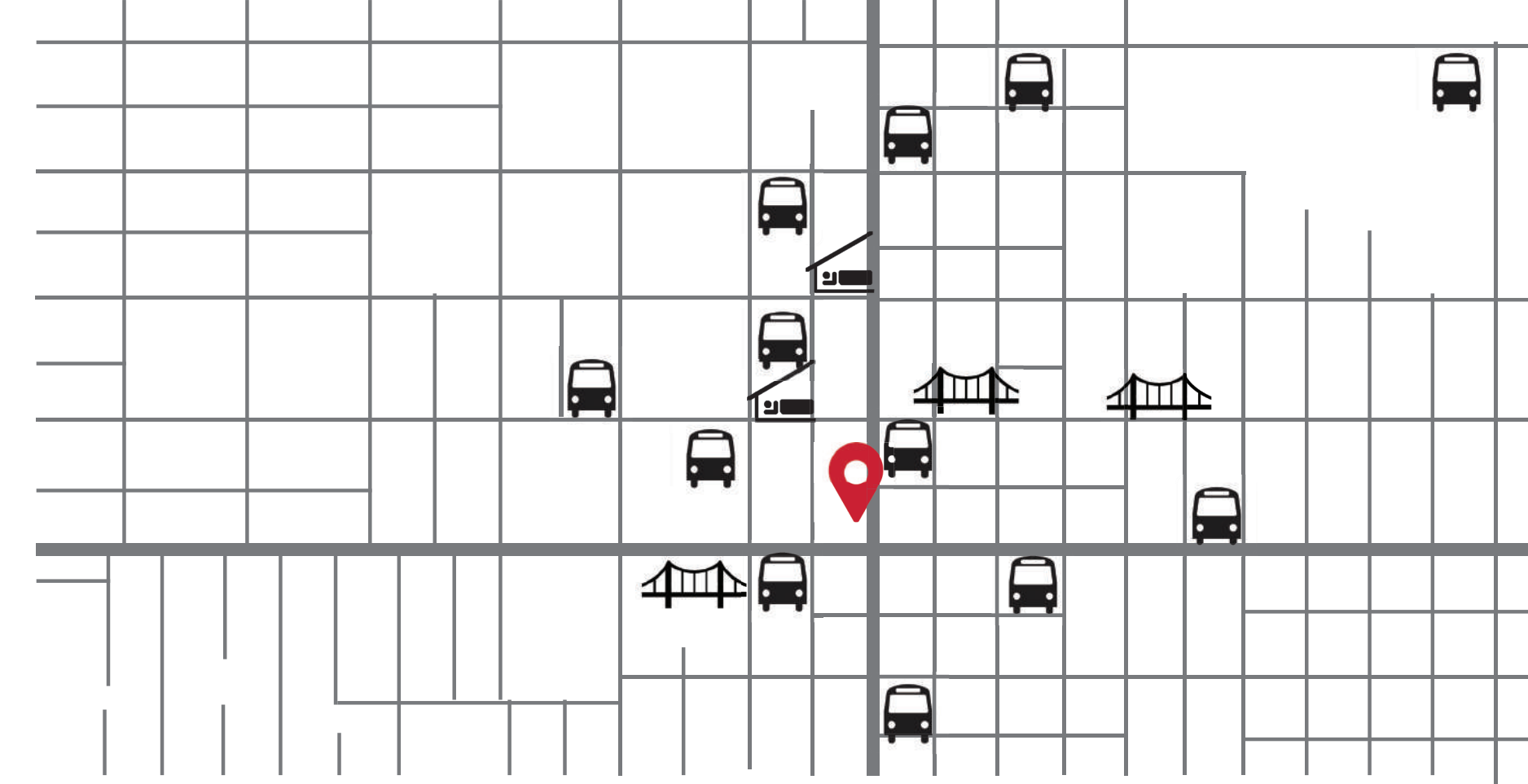


no judgment

CONCEPT

"Empowerment through support" is deeply rooted in 5 design principles, derived from our research, which we've placed within two ideological categories: Respect and Dignity. Our underlying design principles are: **inclusion, non-judgement, confidence-building, privacy, and autonomy.**

Respect refers to admiration or esteem, and we show "respect" for the experiences and resilience of our stakeholders spatially by providing a fully inclusive space that supports their unique needs and individual recoveries. The **Dignity** of our users is supported through the empowerment of their right to privacy, desire to contribute, and autonomy.



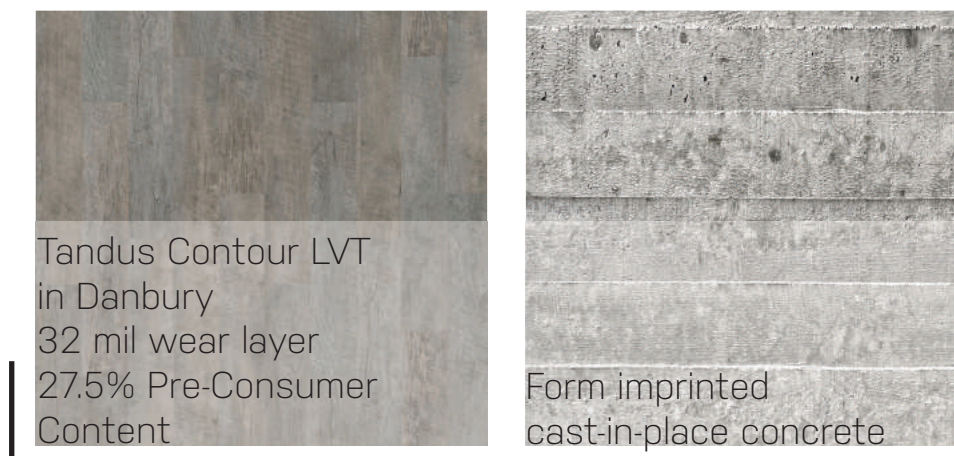
SITE BENEFITS: bus stops services shelter

PRIVACY / Our perception of privacy is related to our relationship with internal and external forces of control in the environment. When feeling increasingly helpless, our need for privacy becomes heightened, and when we gain privacy, our sense of internal control increases. The stronger our sense of internal control, the greater our perception of being able to influence our outcomes. (Pable)

CONFIDENCE BUILDING / "Environmental personalization is an act of potential confidence." (Pable) By creating opportunities to take ownership of spaces and experiences within R+D, when taken up, such moments are safe experiments in proactively creating one's own stability.

AUTONOMY / "Every single person is an individual with different reasons and different causes and to try to box things in so narrowly is just wrong."- Jeff Howard, Veteran, disabled. Experienced 10 years of homelessness. (Community Supported Shelters)

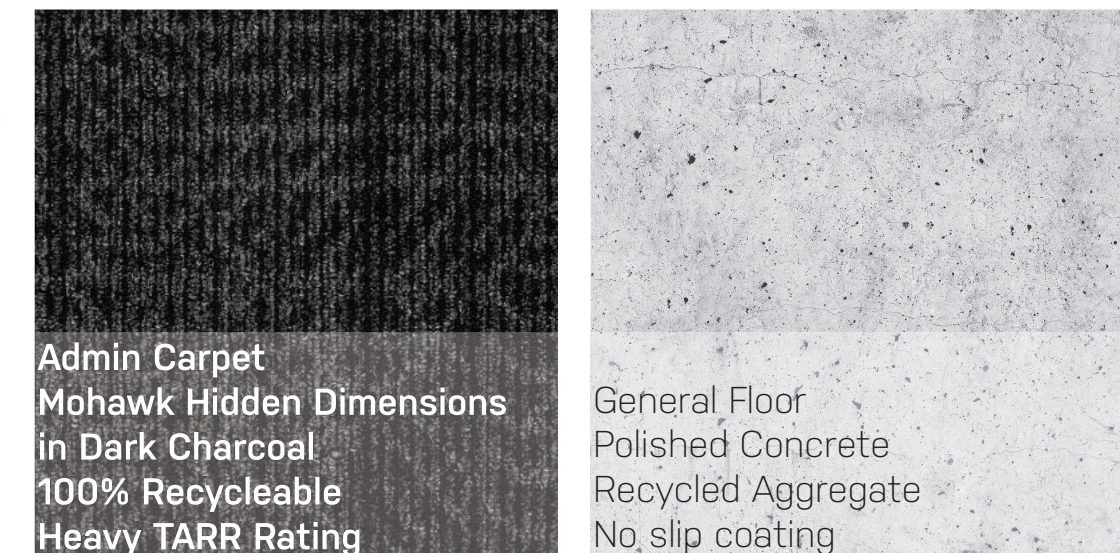
NO JUDGEMENT / A Eugene woman experiencing homelessness since fleeing domestic violence with her 3 children and 2 dogs spoke at a rally protesting local anti-homeless ordinances a few years ago. She said, "I understand what it is like to be pushed aside and treated as 'less than'. I know what it's like to be targeted and singled-out because I have no house. I know the ache from the depth of my core from being looked at like I didn't belong... had things thrown at me for asking someone for help..."



ADMIN / ENTRANCE



Admin Desk System
Herman Miller Hive 016



LIVING ROOM

An advocate made clear that we needed to carefully consider any "barriers" (real or implied) in our space, particularly in the entry sequence with regards to security. Based on precedent, we employed their advice, "try positioning the [check-in] desk as a possible place to go for services but not as if it's not required." Apparently, staffing is a vital component of safety. Interviewees extolled the benefit of having staff visible and in the milieu. "This can feel safer..." said one advocate "...like there is a safety buffer but they're not harmed by a security response; [it] takes work but can be effective."

The entrance, main waiting area, and admin are very open to each other and there are sightlines throughout the space. Considering 'barriers' presented by the check-in process, the supportive programmatic utilities coalesced into a central hub; a **Support Station**. While whomever operates this position has direct sightline to the front door, they're not positioned as a barrier. The station's form is open, and there are several reasons to "check-in" here: it could also be for coffee, directions, or to get a towel.

R + D

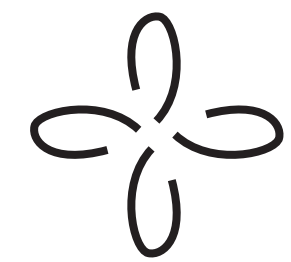
RESPECT + DIGNITY

GOALS

privacy



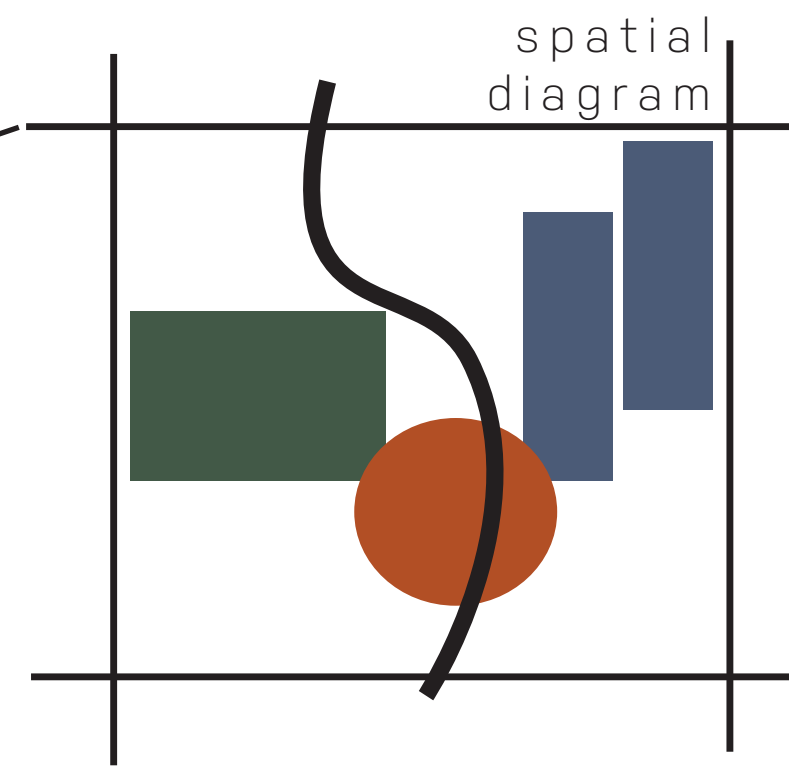
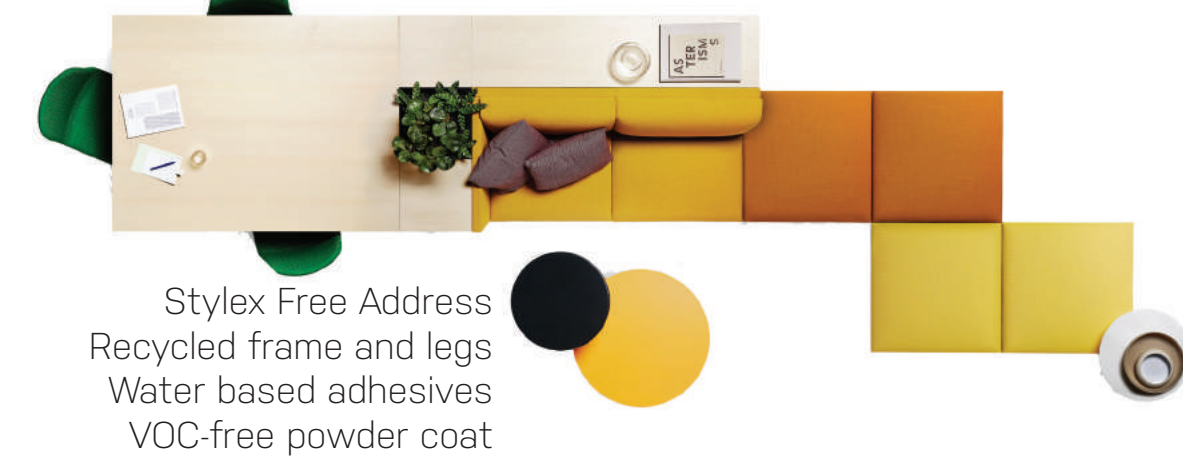
confidence building



autonomy



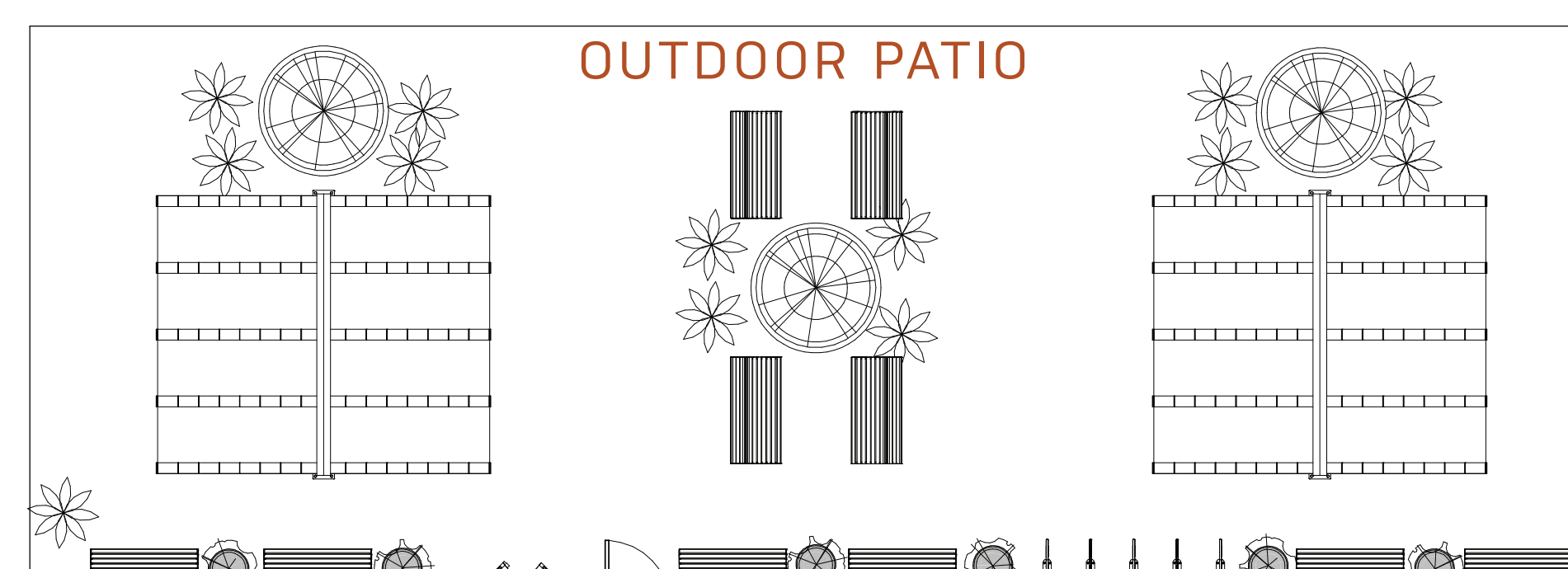
no judgment



"Every bias [that exists, or that one can experience] is amplified for people who are unsheltered." - Alex, Advocate

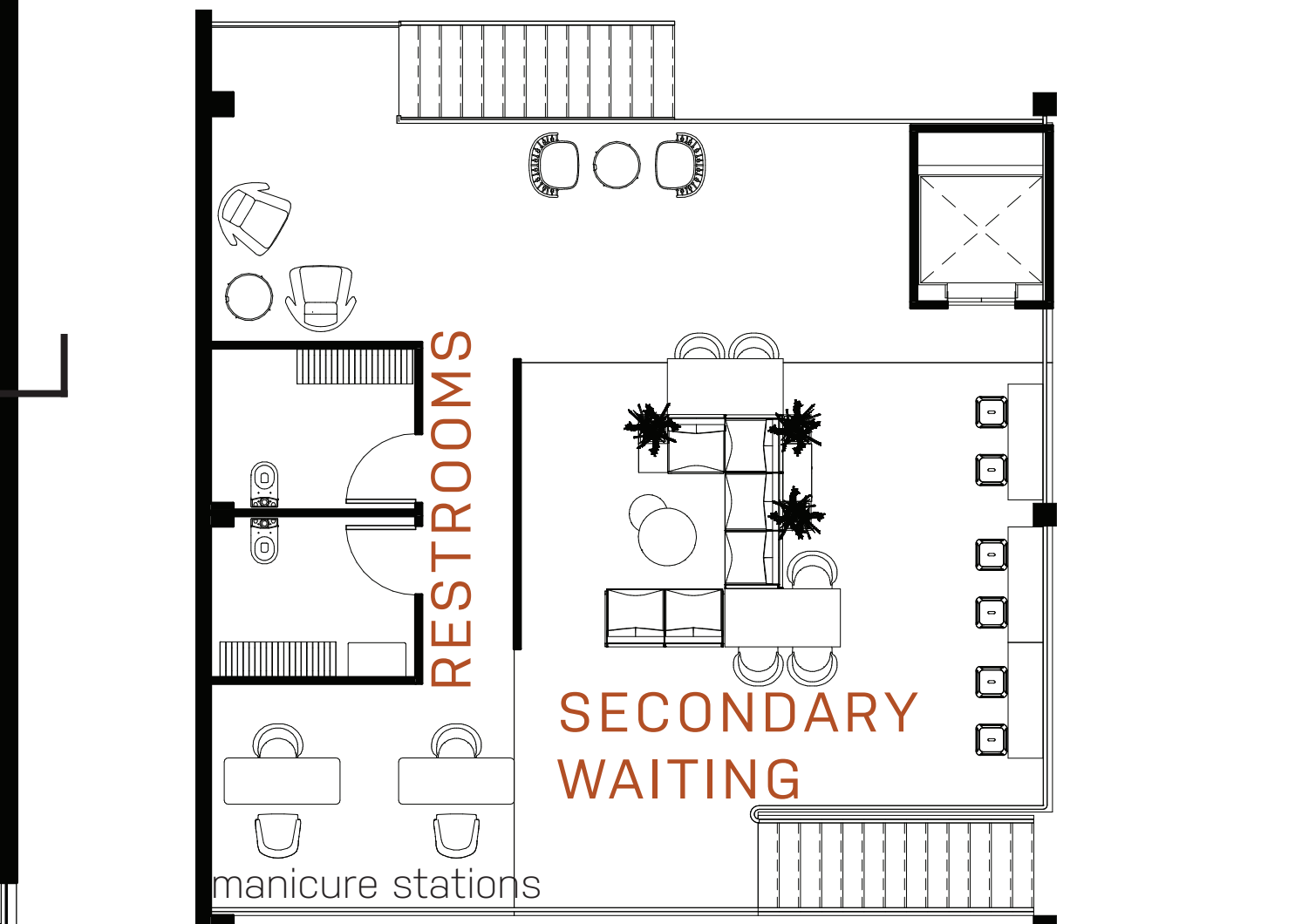
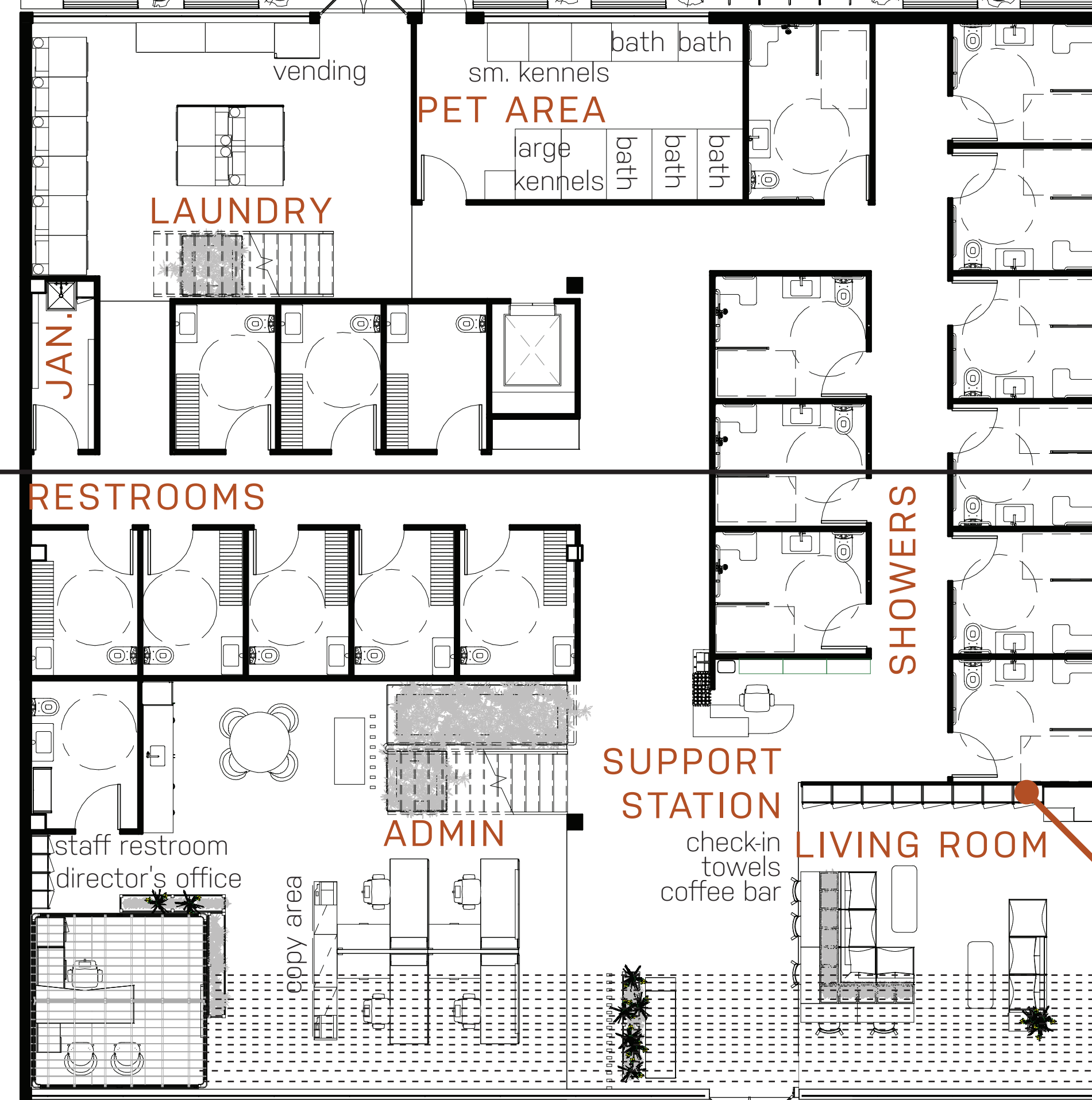
Showing respect and supporting others' dignity obligates this center be inclusive. To this end, the Support Station provides for accessible transaction to occur whether visitors wheel or walk into R+H. All showers and bathroom facilities are gender neutral, accessible, and equipped to suit varying abilities.

MEZZ / Sensitive to the difficult nature of unsheltered to shelter transitions, R+H is designed to gently "evoke a feeling of being sheltered" (Pable) by providing environmental familiarity within the safety of the larger structure's envelope. The entry is a 'protective welcome' in a covered eight and a half foot space from which visitors have a clear view to decide their next steps into the full height (fifteen foot) volume.



OUTDOOR PATIO / When even more open space is desired an outdoor space accessible through the North exit provides another volume of refuge and views. This space is designed in direct opposition of the cruel methods employed through hostile architecture in order to purposefully exclude people living unhoused from public spaces. There are numerous comfortably curved wooden benches, covered areas, only container plantings (to reduce the likelihood of muddy areas), and condensed bicycle parking.

PET AREA / While our research shows many have dogs, some are triggered by them. Mitigating potential triggering is a subtler aspect of inclusivity in this space, but served none-the-less through careful consideration of access and circulation as it relates to the use of the pet area.



lockers with phone chargers

"Free wall": a place for visitors to leave unneeded items that others can take as they need, creating a sense of community sharing



EMPOWERMENT THROUGH SELF CARE / A woman from a community shelter program who'd been homeless off and on for seven years, described the "shock factor" of moving into stable housing. "You're not used to being able to take a nap whenever you want to," she says. "You're not used to being able to take a shower whenever you want to. It's things you're not used to that you have to re-get used to." (Community Supported Shelters)



REFERENCES

Community Supported Shelters. (2019, November 11). Challenges in the Transition to Housing - Community Supported Shelters. Retrieved from Community Supported Shelters: <https://communitysupportedshelters.org/challenges-in-the-transition-to-housing>

Pable, J. (2007). Interior Design Homeless shelter design: a psychologically recuperative approach. *Journal of Interior Design*, 93-108.

Pable, J. (2012). The Homeless Shelter Family Experience: Examining the Influence of Physical Living Conditions on Perceptions of Internal Control, Crowding, Privacy, and Related Issues. *Journal of Interior Design*, 9-37.

Ward 9, Homeless Neighbors Association. (2017, Oct 5). "Ward 9 and Allies Rally for Homeless Rights!". Eugene, OR, USA.