

Shared Spaces in Baton Rouge, LA is a vertical studio that focuses on promoting service learning, community outreach and innovative design solutions for those psychologically effected by environmental change.

Learn and Connect
Technology and Collaboration



Resilience

Impact, Learn, Connect, Reflect and Grow

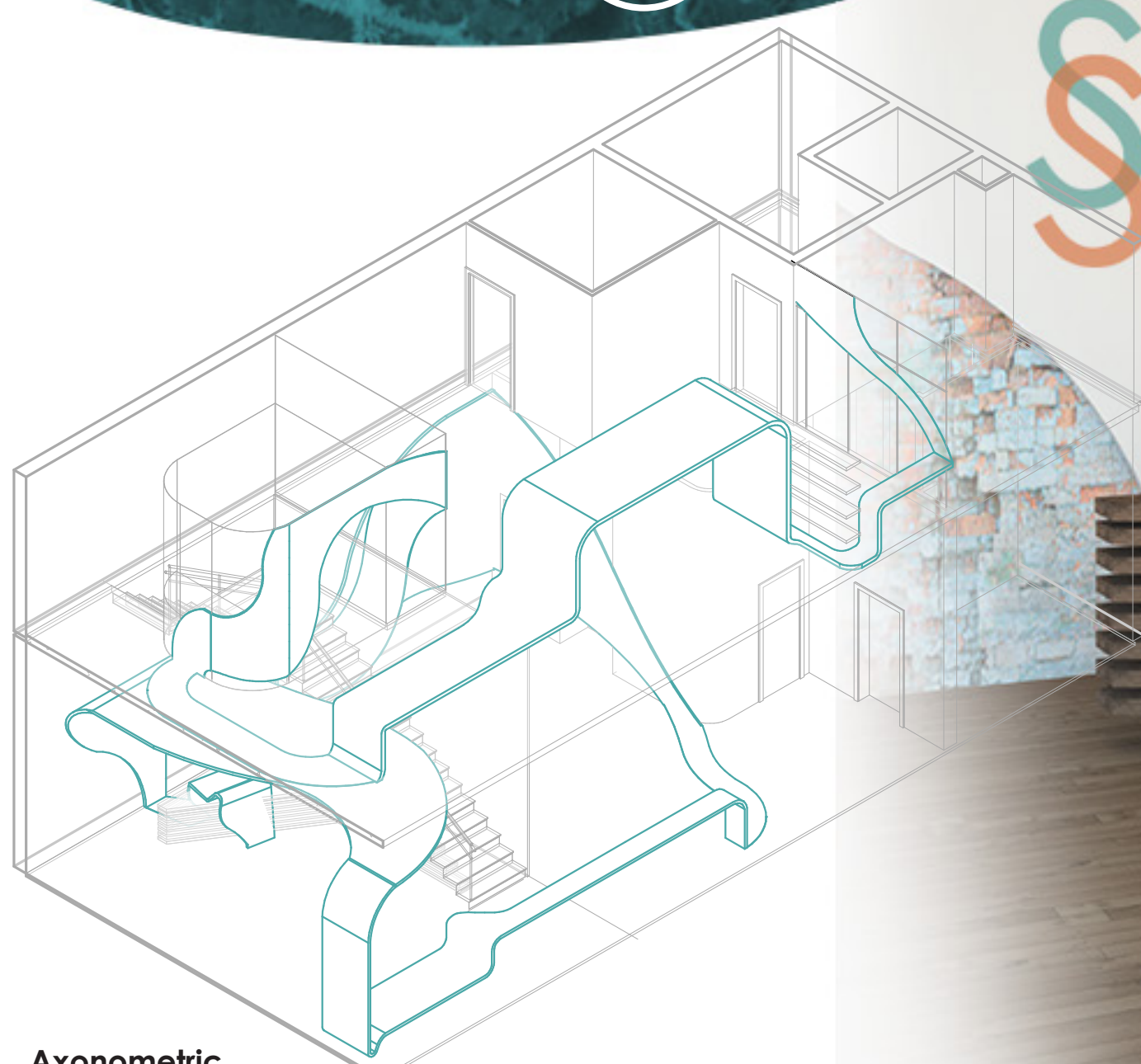
Baton Rouge

The capitol of Louisiana located along the Mississippi River. In 2005 when Hurricane Katrina hit Louisiana over one million people were displaced. According to USA Today, "Within days, Baton Rouge, a city of 225,000, was an overwhelmed mass of about 500,000." (Johnson, K. 2007) The growth that hit Baton Rouge left may people struggling with psychological effects associated with environmental change. The survivors of the Hurricane and many civilians of Baton Rouge were affected by the huge change in their culture, city, and lives.

"A feeling of well-being is related to an individuals ability to cultivate both a sense of security and a sense of meaning or purpose" (Hausman, M., & Reed, J. 1991). This security and purpose was lost for many due to Katrina. According to the Huffington Post, "... [For people] who haven't been able to return to New Orleans, unstable housing and the stress of relocation have wrecked havoc on their mental health" (Schumaker, E. 2015). Emotional effects of losing a sense of place evoke "... feelings of tension, anxiety, helplessness, and frustration... Physical symptoms, such as headache and fatigue are often experienced" (Hausman, M., & Reed, J. 1991).

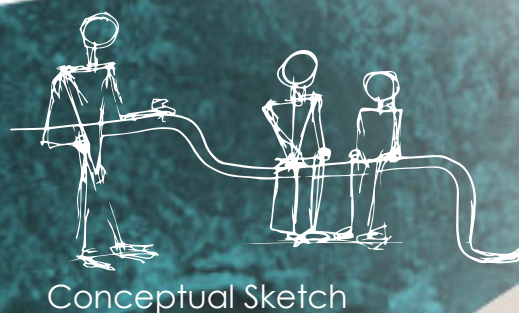
Louisiana State University is located in Baton Rouge and home to a CIDA accredited interior design program. This program focuses on teaching students about the importance of personal and cultural aspirations. "They consider meaning and identity, function and purpose, and issues pertaining to health and safety" (Mission Vision 2013). The curriculum at LSU emphasizes the need to understand humanities and social sciences. The importance of humanities and social sciences directly relates to the community outreach developed through collaboration in this vertical studio.

Axonometric
Continuous Architectural Element



= 100,00 People

New Orleans, LA



Resilience

1. The power or ability to return to the original form, position, etc., after being bent, compressed, or stretched; elasticity. (Dictionary.com)
2. "Resilience is the process of adapting well in the face of adversity, trauma, tragedy, threats or significant sources of stress — such as family and relationship problems, serious health problems or workplace and financial stressors. It means, "bouncing back" from difficult experiences." (the Road to Resilience, 2015)

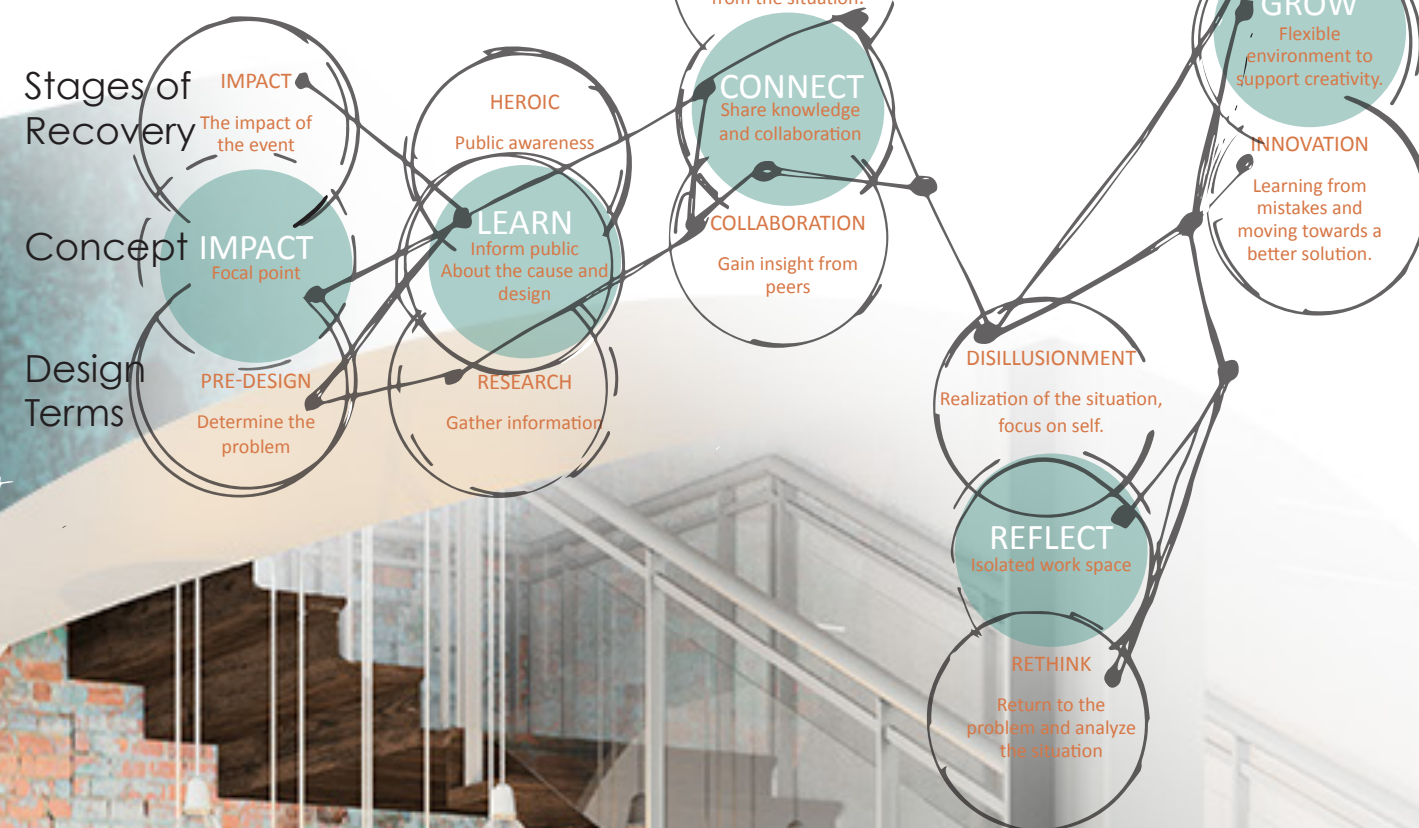
The term resilience directly relates to the process of recovering from a natural disaster. According to Federal Emergency Management Agency (2013) the recovery process consists of 5 phases:

- Impact
- Heroic
- Community Connectivity
- Disillusionment
- Reconstruction

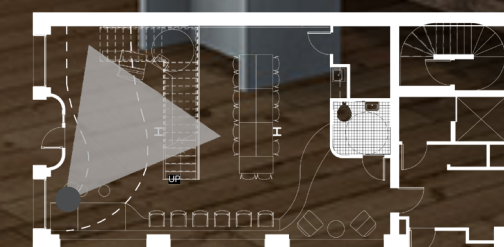
The pairing of these 5 phases with design related terms gilded the concept of **Resilience: Impact, Learn, Connect, Reflect and Grow.**

The design language displays the ups and downs of recovery through a curvilinear architectural element that runs through the space. "Curved or circular lines provide relief, softness, and balance. They can give an elegant, human quality to interiors. A series of curved lines may give a rhythmic cadence to the room, suggesting graceful movement" (Bergeson, A. 2013). This element provides visual stability and helps to move the user through the flexible space. The historic existing structure paired with the white contemporary element creates a metaphor to represent the lifestyle these survivors left behind and the new beginning and growth that will proceed. The color scheme used in the space is derived from Baton Rouge's culture. Orange is used to accentuate the active and social lifestyle in Baton Rouge and is paired with blue to create a calming aspect throughout the space (Kumi, Conway, Limayem, and Goyal, 2013).

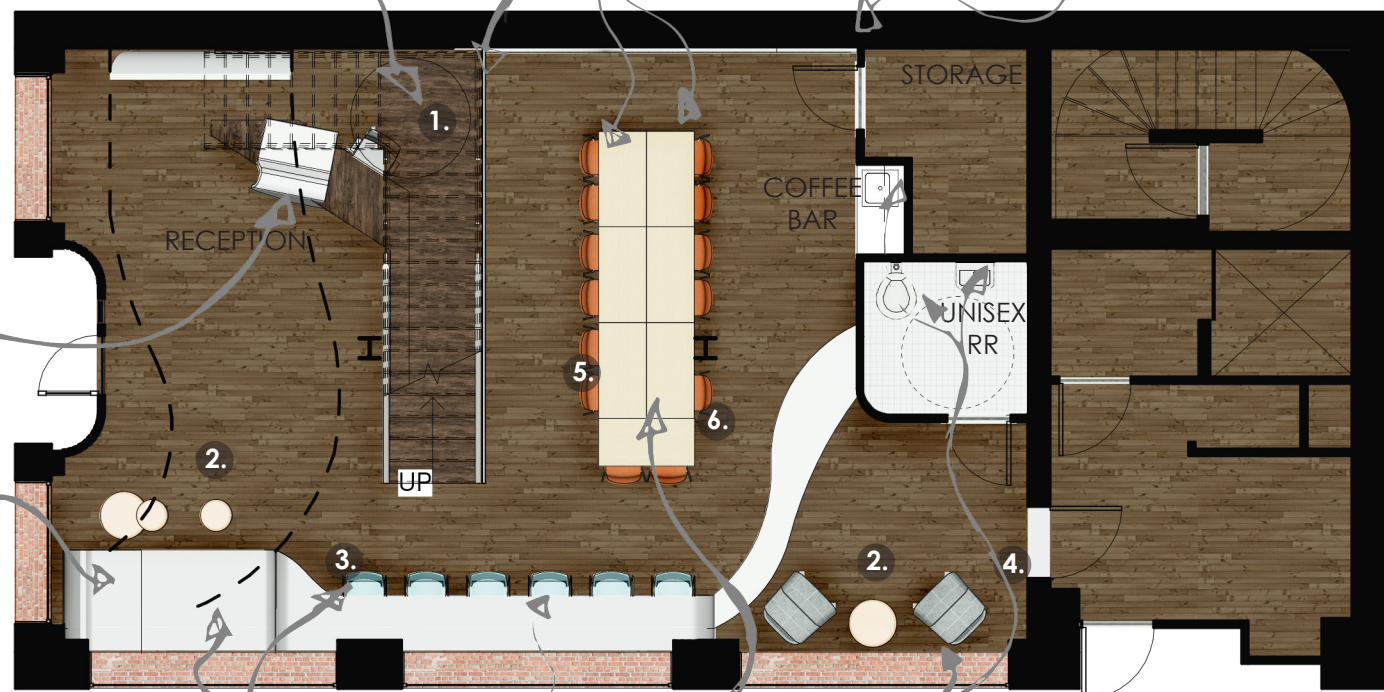
Research Diagram



Impact
Reception and First Impression



N ↑ Level 1
Scale 1/8" = 1'-0"



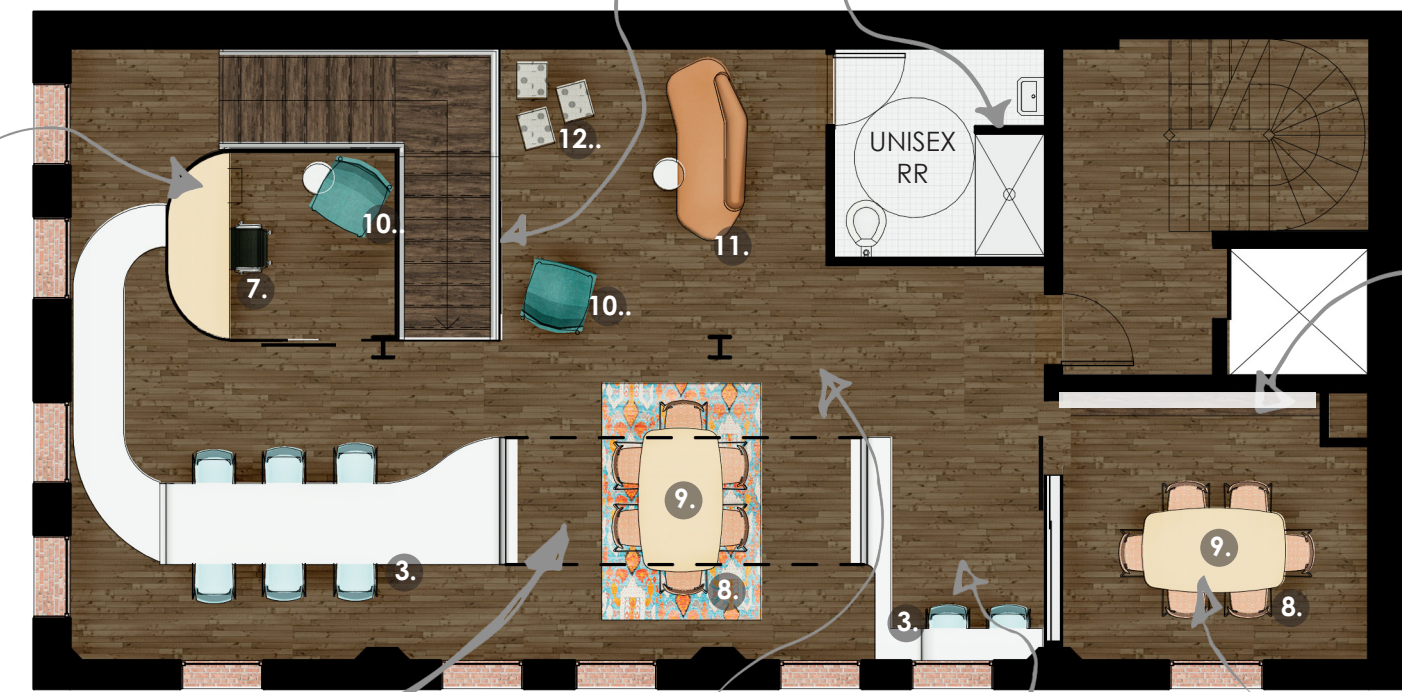
Impact
Origin of the continuous line.

Learn
Informational imagery and technology.

Head height is +8', storage blocks access to lower treads.
Stairs within space enhance connectivity of studio and community space.
Modular tables and stacking chairs, makes furniture arrangements flexible.
Continuous line creates writable projection surface.

Continuous line creates seating and tables.
Interactive Technology stations.
Connect
Multi-functional space, charrette, conference, classroom.
Energy efficient windows and fixtures.

N ↑ Level 2
Scale 1/8" = 1'-0"



Reflect
Reserve space for individual work time.

Grow
Studio space designed to promote collaboration and support individual work styles.

Continuous line connects first level and second level on west wall of stairs.
Increased traffic due to rise in population. Showers are convenient from users that bicycle to 'Shared Spaces'. It also promotes sustainable transportation options.

Continuous line creates ceiling element over collaboration space.
Storage
Flexible office space. Currently displayed as conference room.
Resource Room

Furniture & Finishes

	Curvilinear architectural element finished in white		1. Haworth- Very Task Chair Green Guard & IAQ Certified Textile: Knoll- Hourglass 15.0% Polyester, 8.0% Nylon, 77.0% Post Consumer Recycled Polyester		7. Herman Miller- Eames Aluminum Management Chair Greenguard Gold & Low Emissions Textile: Herman Miller- ColorGuard 5.0% Nylon, 75.0% Pure New Wool, 20.0% Silk
	Existing Brick and painted finish		2. Haworth- Openest Spring Tables 18% Recycled Content, 27% Recyclable & LEED Credits Wood- Melba NO VOC's, NO PVC		8. Coalesse- Wrapp Chair Gold Certified: 43% Recyclable 10% Recycled Content Textile: Wolf Gordon- High Line 42% Recycled Polyester, 29% Rayon, 29% Cotton
	Existing Wood Floors		3. Haworth- Very Wire Stool Greenguard Gold: 98% Recyclable & LEED Credits Shell Color- Glacier		9. Keilhauer- Syz Table Follows ANSI/BIFMA e3-2012 Furniture Sustainability Standard Wood- Natural Maple FSC® Certification
	Reclaimed Wood Reception & Stairs		4. Haworth- Windowseat Lounge Greenguard Gold: 98% Recyclable & LEED Credits Textile: Haworth- Cotswold 100% Pure Wool		10. Knoll- Jehs+Laub Lounge Chair Greenguard & IAQ Certified® Textile: Arc-Com- Santa Fe 57% Polyester, 25% Viscose, 18% Cotton; Contributes to LEED Certification
	Cooper LED Suspended Neo-Ray 22DP Straight & Narrow		5. Herman Miller- Troy Upholstered Chair Greenguard Gold & Low Emissions Textile: Knoll- Cornaro 5.0% Nylon, 75.0% Pure New Wool, 20.0% Silk		11. Haworth- Openest Feather Couch 35% Recyclable Content & LEED Credits, Textile: Haworth- Cotswold 100% Pure Wool
	Cooper- LED Recessed Can		6. Herman Miller- Everywhere Table Greenguard Gold & Resource Smart: Zero Waste; Net Wood- Clear on Ash FSC® Certification		12. Indiana- Triple Play Passes BIFMA e3-2012 Furniture Sustainability Standard Textile: DesignTex- Round Leaves 100% Preconsumer Solution Dyed Nylon
	Hightower- LED Caravaggio Matte				
	Hightower- LED Bulb Fiction				



Grow
Collaborative Studio and Resources.

References
Bergeson, A. (2013, May 16). Room To Talk BlogYour Home. Your Way. Retrieved September 4, 2015, from <http://www.rcwilley.com/blogs/Room-To-Talk>
Hausman, M., & Reed, J. (1991). Psychological Issues in Relocation: Response to Change. *Journal of Career Development*, 17(4), 247-258.
Johnson, K. (2007, February 21). Post-Katrina Baton Rouge struggles with its identity - USATODAY.com. Retrieved September 1, 2015
Kumi, R., Conway, C., Limayem, M., & Goyal, S. (2013). Research article learning in color: how color and affect influence learning outcomes. *IEEE Transactions On Professional Communication*, 56(1), 2-15. doi:10.1109/TPC.2012.2208390
Mission Vision | LSU Interior Design. (2013). Retrieved September 4, 2015.
Resilience. (n.d.). Dictionary.com Unabridged. Retrieved September 04, 2015, from Dictionary.com website: <http://dictionary.reference.com/browse/resilience>
The Road to Resilience. (2015). American Psychological Association Retrieved September 4, 2015
Schumaker, E. (2015, August 27). Katrina Displacement Took Major Psychological Toll On Some Moms. *Huffington Post*. Retrieved September 4, 2015.
Federal Emergency Management Agency Crisis Counseling Assistance and Training Program Guidance. (2013, March 1). U.S. Department of Health and Human Services. Retrieved from www.dhhr.wv.gov