



The concept for this design embodies the notion of resilience through a sanctuary-like environment. There is a focalized approach through the incorporation of culture, belonging, and community. Influenced by Syrian lifestyle, the design approaches a simplistic, yet necessary response to the vast Syrian refugee crisis that has displaced families for over a decade.

Project Oasis is a refugee camp for Syrian women and children who are affected by the abusive and dangerous lifestyle in their current places of refuge; it was established for these people after they fled from their home country of Syria amidst an eleven year civil war. The camp is located right outside of Adana, Turkey, where the refugees will have ample access to resources including food, water, and electricity. Project Oasis is close in proximity to the Adana Syrian Refugee Camp, which establishes a connection to an existing and thriving refugee community. Adana, being a major city within Turkey, provides an opportunity to bridge the gap between the urban city and the rural landscape where these camps are stationed. The camp is in close relation to the Syrian border, so travel time by walking is approximately four to five days. Integrating Project Oasis into a well-established community allows the opportunity to ensure the proper resources and help assist the encampment. The camp will be a place for refugees to rehabilitate their lifestyle within a year's time, allowing them the chance to progress forward and build a new life.



EXTERIOR PERSPECTIVE

The exterior perspective exemplifies what the units look like when they are standing alone versus being in the stackable configuration. The environment is typically a hot, dry, and desert-like oasis. With the closeness in proximity of the units, it allows the refugees to establish a sense of place and community, which is reflective of the standard dwelling in the Syrian culture.

The location allows for numerous resource connections between bodies of water, such as rivers that flow from the Catalan Baraji, farming opportunities from the local land, and imports and exports available from the urban city.



INTERIOR PERSPECTIVE

Communal space that acts as a relaxing living areas that provides floor seating, but also acts as a dual-purpose dining space.

Traditional Syrian rugs incorporated into the interior to create a sense of place within the units.

Ready-made kitchen incorporated into each unit that provides a designated countertop space, pots, pans, hot plates, and woven baskets for storage and cooking needs.

The kitchen also includes a deep-basin sink is provided for laundry and washing needs.

The kitchen was an essential incorporation because it is one of the most significant aspects of Syrian culture; Syrians typically dine together daily and make their meals a crucial part of their time together. By generating this space, it creates a sanctuary for the women and children and enables a strong sense of security and community to shelter them from their previous fearful living scenarios.

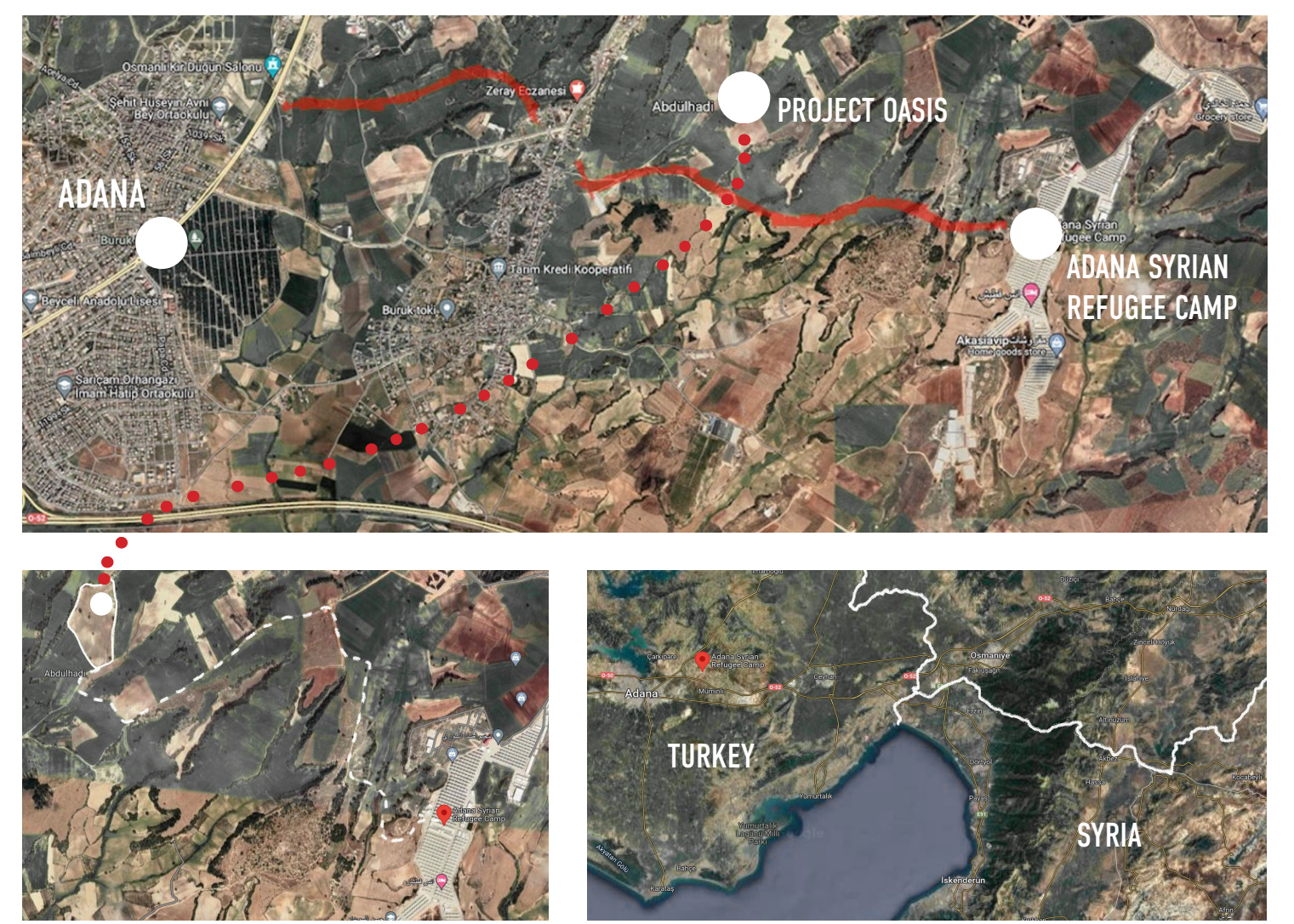
WOMEN AND CHILDREN FLEE SYRIA

WALK 63.4 MILES TO SYRIAN/TURKEY BORDER

MIGRATE ACROSS TURKISH BORDER

WALK 126.1 MILES TO ADANA, TURKEY

ARRIVE AT PROJECT OASIS REFUGEE CAMP

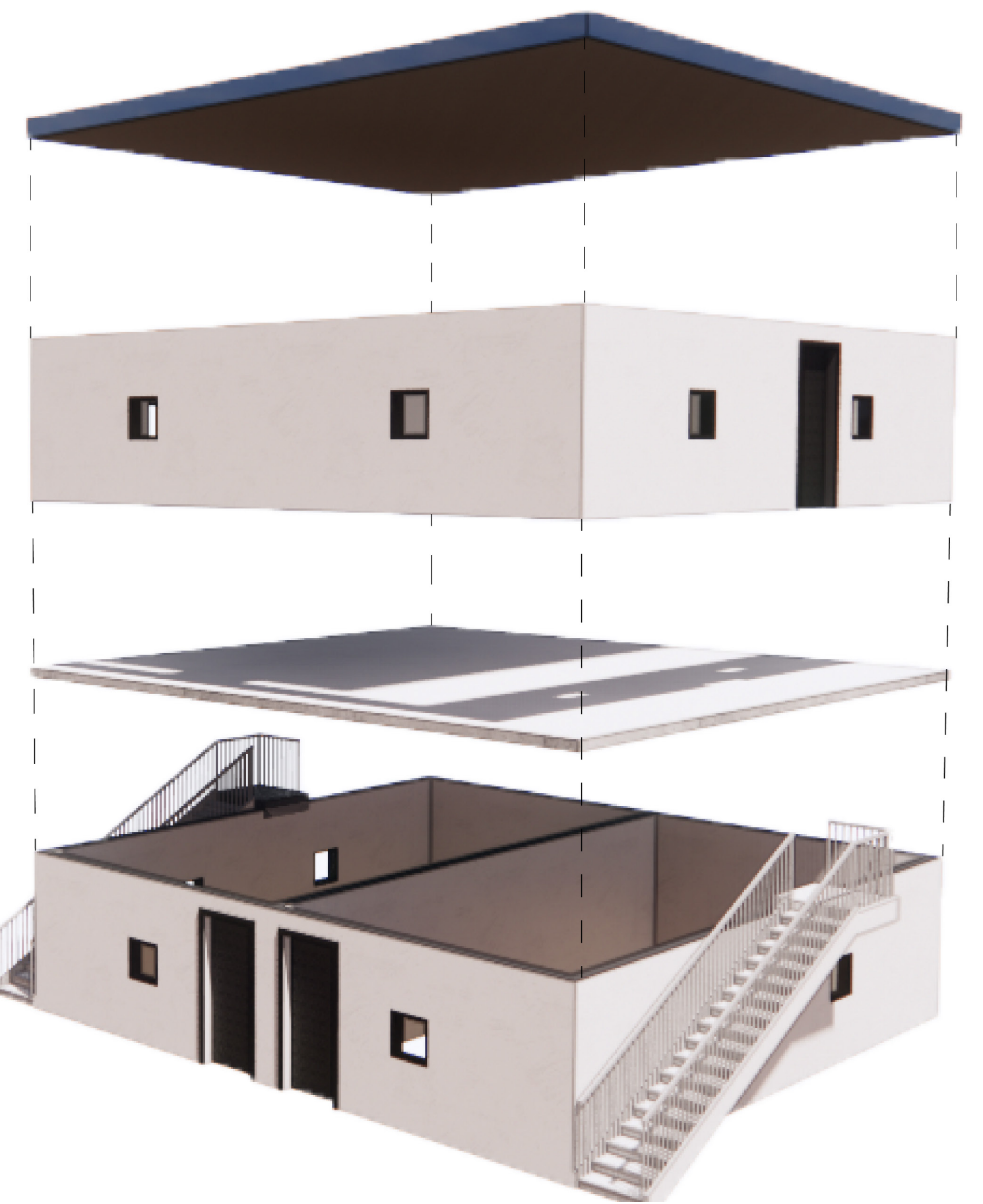


The prototype for Project Oasis is a modular dual pod structure that enables stacking capabilities to create larger configurations and a sense of community that Syrians are already acculturated to. The assemblance of the housing consists of concrete flooring and cement stucco walls insulated with mineral fibers and plywood on the underlying surfaces. The pods will be completed with the assistance of the Turkish Government, the European Union, and the World Bank, current aid resources in Turkey, which will aid in funding and construction.

It is apparent that the integration of their culture and their access to resources is crucial, as the safety of the women and children is of the utmost concern within the Syrian refugee crisis. The pods include a private kitchen setting, a communal dining and living space, and a private sleeping zone.



SITE PLAN PERSPECTIVE



EXPLODED AXONOMETRIC

Sleeping zone with curtains for public/private areas that promote an open or close floor plan atmosphere.

Ample storage space for all belongings and artifacts is provided within each unit, including underneath beds and the kitchen countertop.



UNIT SECTION



PLAN PERSPECTIVE OF TWO ADJACENT UNITS



AXONOMETRIC OF INTERIOR UNIT

CITATIONS

- "10 Years on, Turkey Continues Its Support for an Ever-Growing Number of Syrian Refugees." World Bank. <https://www.worldbank.org/en/news/feature/2021/04/22/10-years-on-turkey-continues-its-support-for-an-ever-growing-number-of-syrian-refugees>.
- Daily Sabah. "Thousands of Syrians Provided with Health Care, Education Services at Center in Southern Turkey." Daily Sabah. 24 Nov. 2019. <https://www.dailysabah.com/photo/2019/11/24/thousands-of-syrians-provided-with-health-care-education-services-at-center-in-southern-turkey>.
- "Inside a Syrian Kitchen." World Food Programme USA. 1 Mar. 2015. <https://www.wfp.org/articles/inside-a-syrian-kitchen>.
- "Kantaa Women's Village." Communitecture ARCHITECTURE | PLANNING | DESIGN. <https://www.comunitecture.com/kantaa-womens-village.html>.
- Mehli Cilas. Graph Commons. "Syrian Refugees and Molds in Turkey." Graph Commons. <https://graphcommons.com/graphs/60158c2-9d56-4745-9145-97bc08d6dc4?selection=6155d73b-5516-44f5-84fe-dac155d72787?asin=tree>.
- "Syrian Journey: Choose Your Own Escape Route." BBC News. BBC. 1 Apr. 2015. <https://www.bbc.com/news/world-middle-east-20150401>.
- "Syrian Refugees and the Transformation of Turkey's Rural Areas." Southern Responses to Displacement. 5 Mar. 2020. <https://southernresponses.org/2020/03/06/syrian-refugees-and-the-transformation-of-turkeys-rural-areas/>.
- "Turkey vs. Syria - Country Comparison." <https://www.indesimundi.com/facebook/compare/turkey-syria>.
- "What's Life Like in a Syrian Refugee Camp?" Muslim Aid. <https://www.muslimaid.org/media-centre/blog/whats-life-like-in-a-syrian-refugee-camp/>.