



Concept Statement

All people deserve a comfortable place of refuge and relaxation in their community, but unfortunately some do not have the resources to end their days in a controlled environment. Through the adoption of Japanese bath culture, and biophilic design principles One Circle, enhances a sense of belonging and provides aid to people preparing for housing, looking for housing, or without housing and other amenities. This facility offers an array of hygienic resources such as, clean showers, and bathrooms, along with hair and nail maintenance spaces. One Circle is a communal building intended to be open 24-hours. Offering stable environments in the community enhances the livelihood of its member, and increases the likelihood of addressing other challenges citizens may face throughout their everyday lives.

The Koi Fish

This Asian native fish symbolizes prosperity and longevity. The koi fish has the ability to swim for long periods of time, against strong currents, and in deep waters, their capability to overcome physical challenges inspired the vision throughout the project of a school of fish (the community) prospering together. Koi fish are amongst the first fish to be accepted and successfully breed despite their defects. Their unique spots and vibrant color have now been heavily embraced by the Asian population.



Research

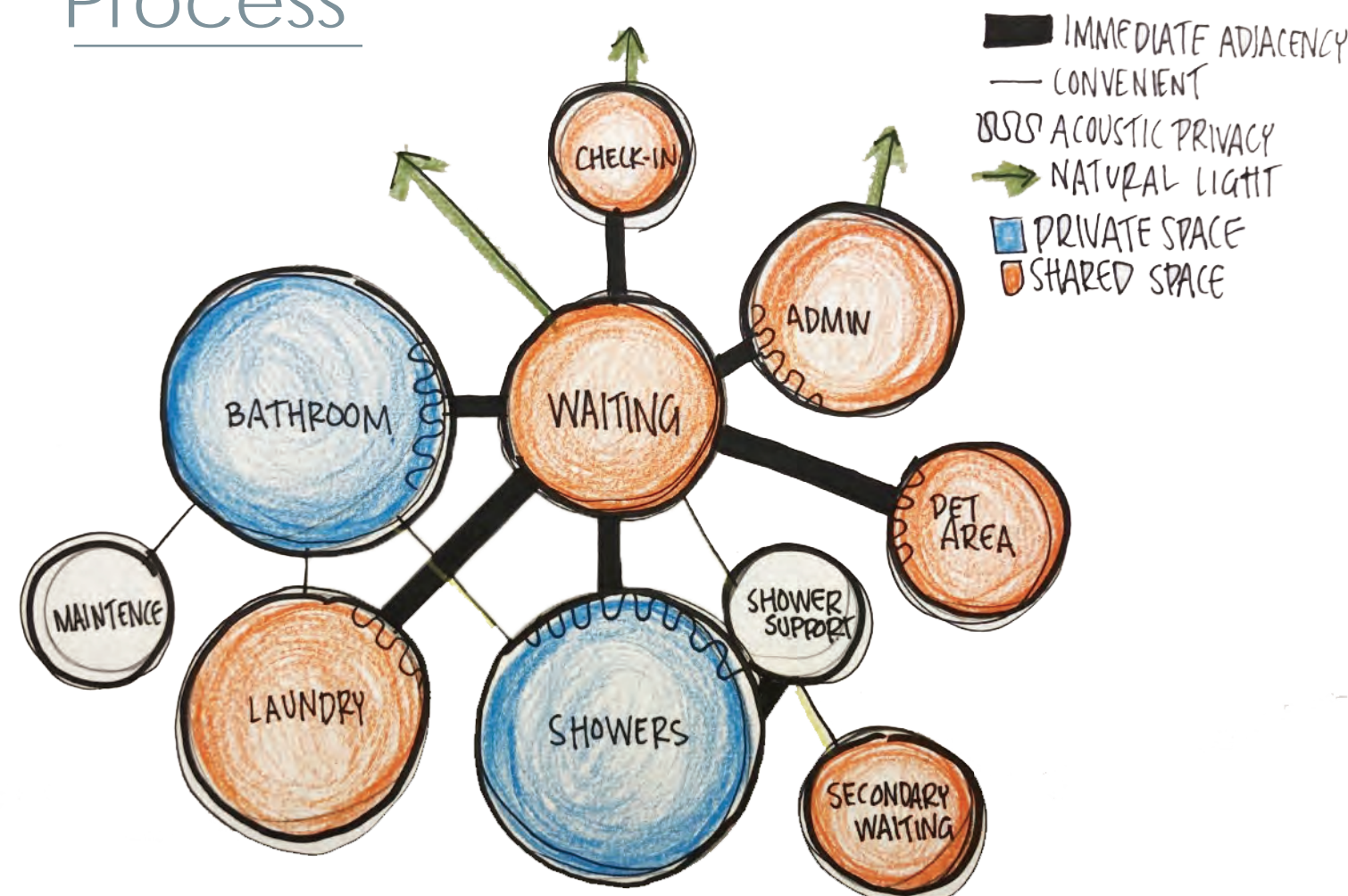
Experiential Research and Interviews:

Analysis of a local center for the homeless was carried out at the Capital Area Alliance located in Baton Rouge, Louisiana. Their mission is to "provide a continuum of care network for the homeless" in the local area. Services include transitional housing, and permanent housing services, mental health counseling, life skill training, and more. When speaking with Weston Schild and Assistant Director, Randy Nicholas, words like 'durability', 'flexibility', and 'dynamic spaces' seemed to drive conversation about how to improve a support service facility. Staff members seemed to feel comfortable and dedicated to helping the people who visit everyday, which is roughly about 150 people. When speaking with long-time receptionist, Tasha, she said "I've never felt unsafe here because I've built a relationship with the locals, and I try to make them feel welcome."

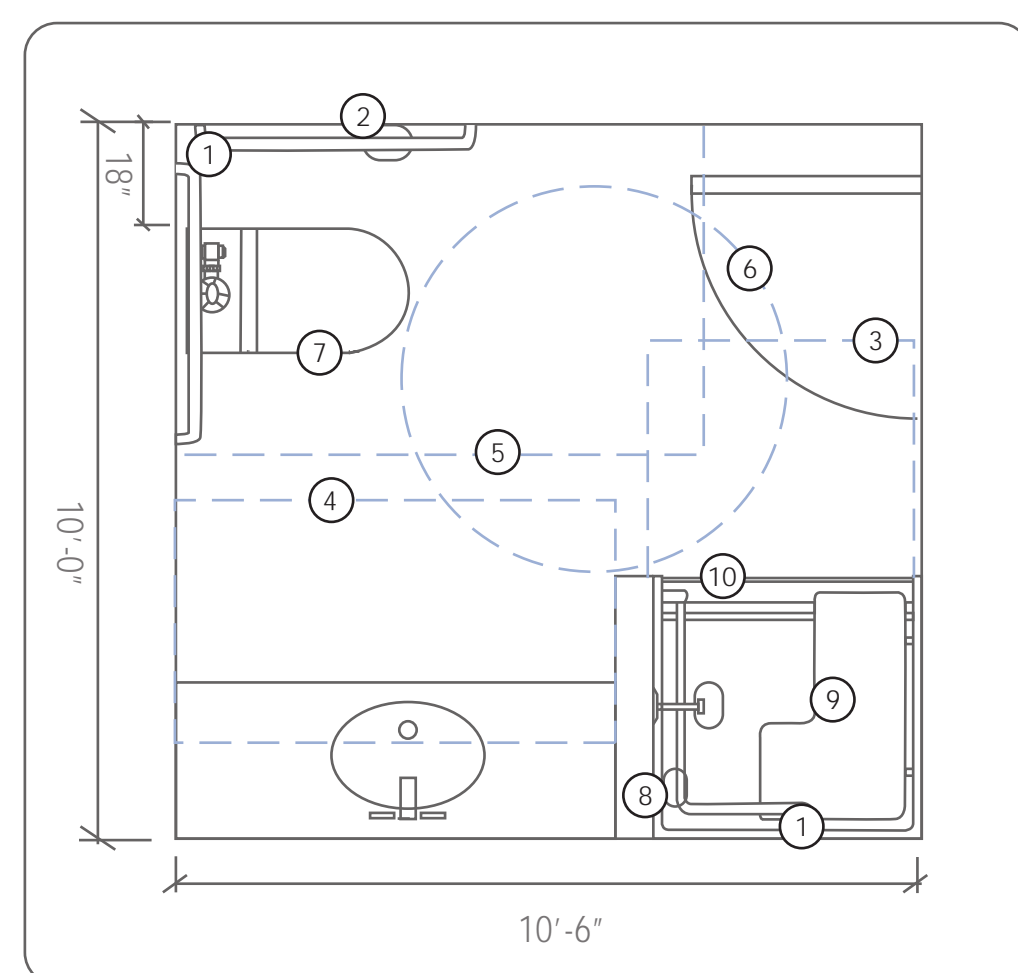
Additional Research

Japan has one of the smallest populations of people without homes; heavily influenced by their acceptance and lack of racial biases. Not only does Japan's government financially support its citizens without housing, their society does too. In Tokyo, 24-hour 'internet cafes' double as shelter for refugees residing in the city. Cafe-styled environments tend to be shared spaces with diverse crowds of people. These sociological encounters encourage the possibility to engage with people outside of personal 'social norms'. Many people without homes feel as if they are misunderstood and neglected by society, by offering a building that feels comfortable to a entire neighborhood, it encourages civic participation. According to research conducted by New Haven Medical Center, citizens relationships with communities is important during the process of rehousing and helps support mental health.

Process

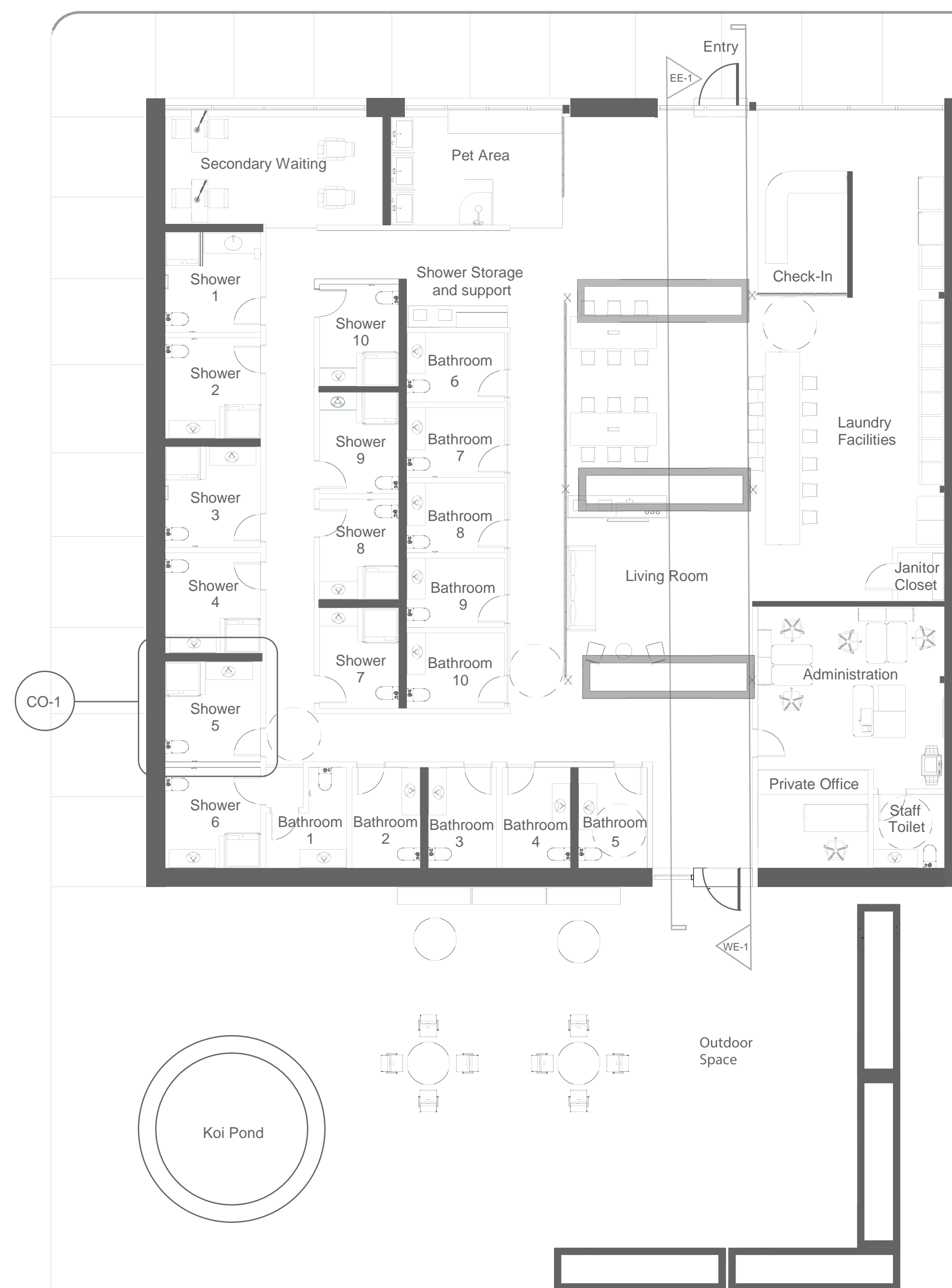


Adjacency Diagram



CO-1 Shower Call-Out

- 1 ADA Grab Bar
- 2 Toilet Paper Holder
- 3 30" x 36" Clear floor space
- 4 36" x 40" Clear floor space
- 5 56" x 60" Clear floor space
- 6 5' turning radius
- 7 Automatic Toilet
- 8 Soap Dispenser
- 9 Transfer Shower with folding seat
- 10 No curb



Level 1- Floorplan
1/8" = 1'0"

Safety

The facility will be 24-hours so that it can become a reliable location that eases the anxiety of not having somewhere to go. Security is ensured by placing card-reader on the front and back doors. Distribution of scannable cards gives administration the power to control who comes in and out. The building layout is designed so there are no dead-end corridors, always clear sight to the exits, and large open spaces to ensure members feel safe no matter where they are in the building. The outdoor area includes gardening opportunities and variety of seating arrangements. Community projects to keep the local garden and community growing. Through connection with nature, mental-health is encouraged and the site becomes a therapeutic place to rejuvenate.

Site



Baton Rouge, LA

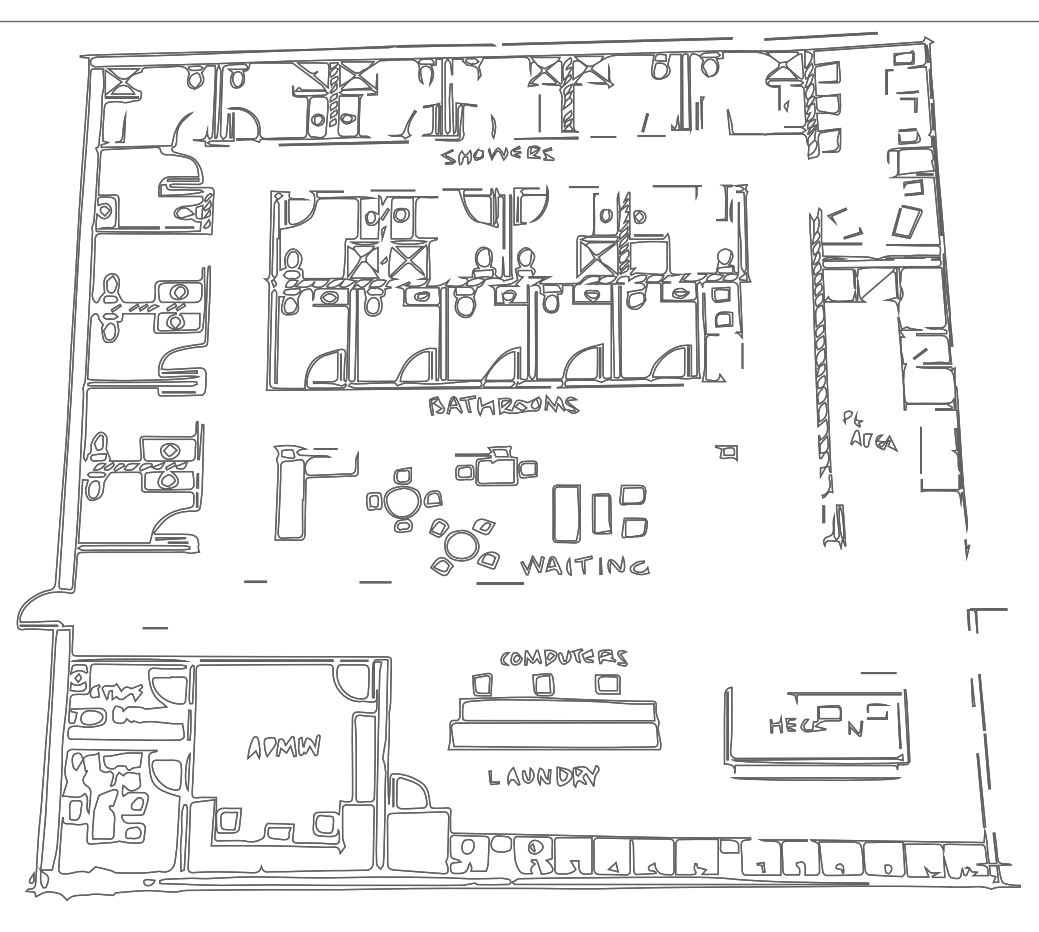
Located in Baton Rouge, where the recorded homeless population is around 500 people. One Circle is near many other community resource buildings.



Reception/ Check-In



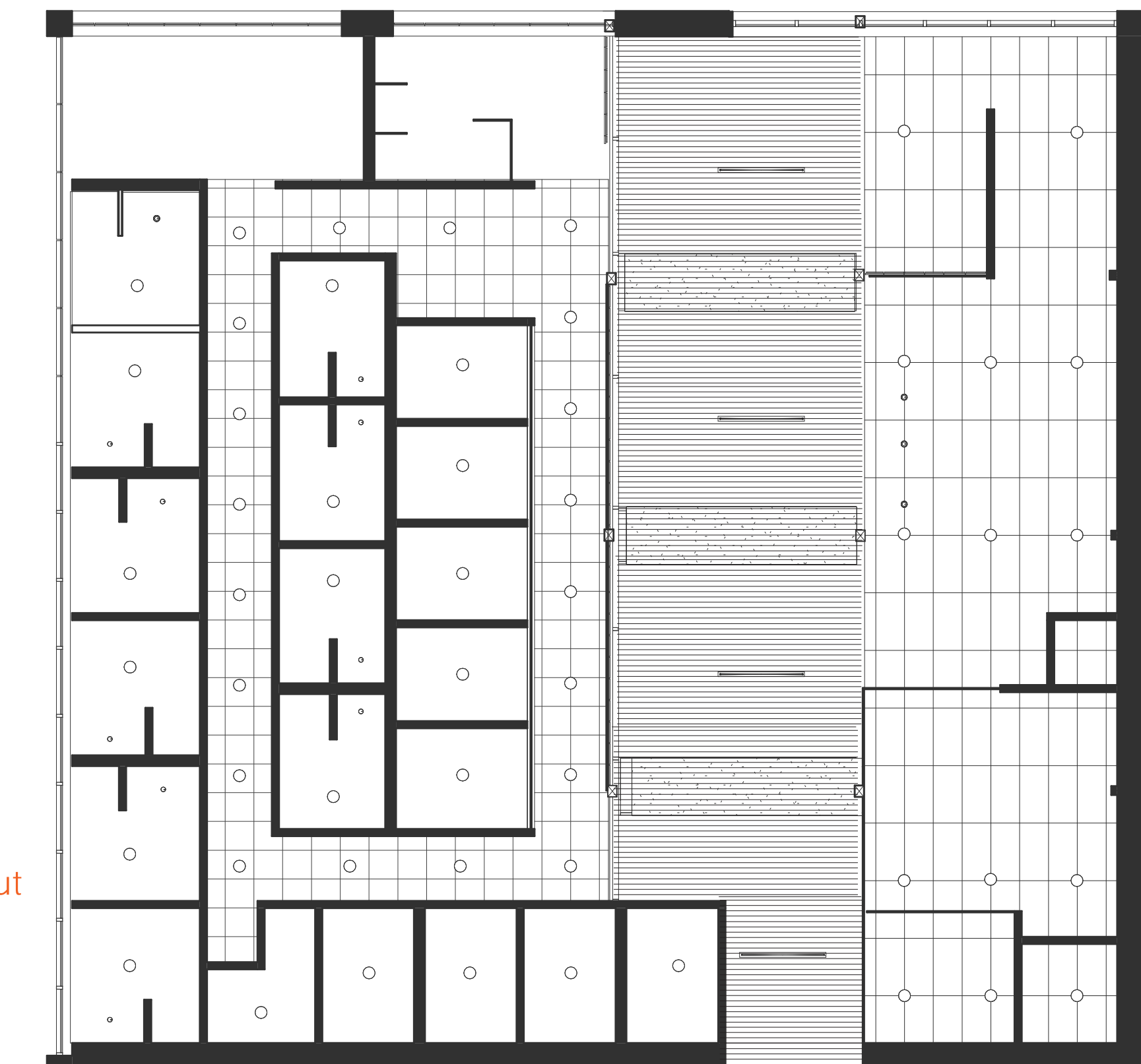
Street-View



Preliminary Floorplan

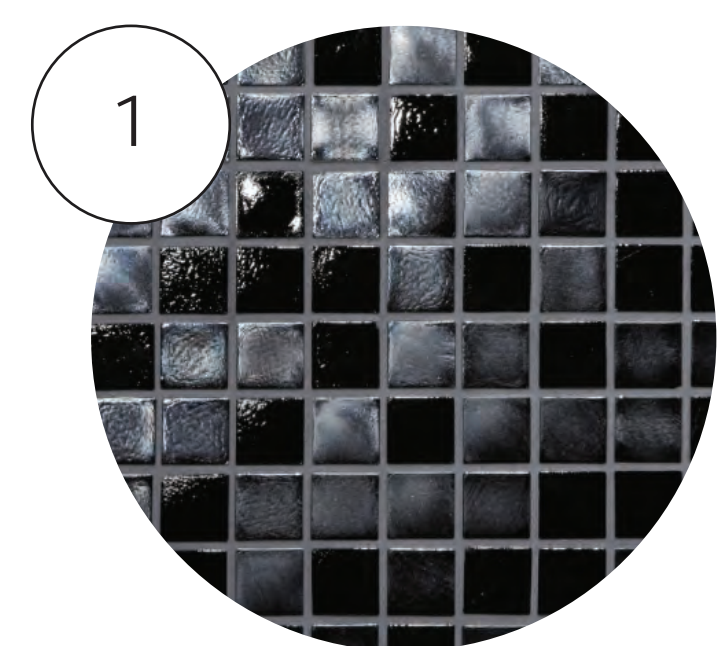
References

Admin. "Global Homelessness Statistics." Homeless World Cup, Homeless World Cup, 28 Oct. 2019. "Japan's Disposable Workers." Japan's Disposable Workers. Kyodo News. "Homeless People in Japan Fewer than 5,000, Gov't Says." ABS, 13 July 2018. "More on Homelessness." "Capital Area Alliance for the Homeless." Murakami, Sakura. "Tokyo's Internet Cafe 'Refugees' Number 4,000, Survey Says." The Japan Times, 5 Dec. 2017. Rowe, Michael, et al. "Combatting Homelessness Is about More than Just Finding People Homes." CityMetric, 10 Aug. 2018. TrustedPsychicMediums. "The Koi Spirit Animal - A Complete Guide to Meaning and Symbolism." Trusted Psychic Mediums, 25 Mar. 2019.

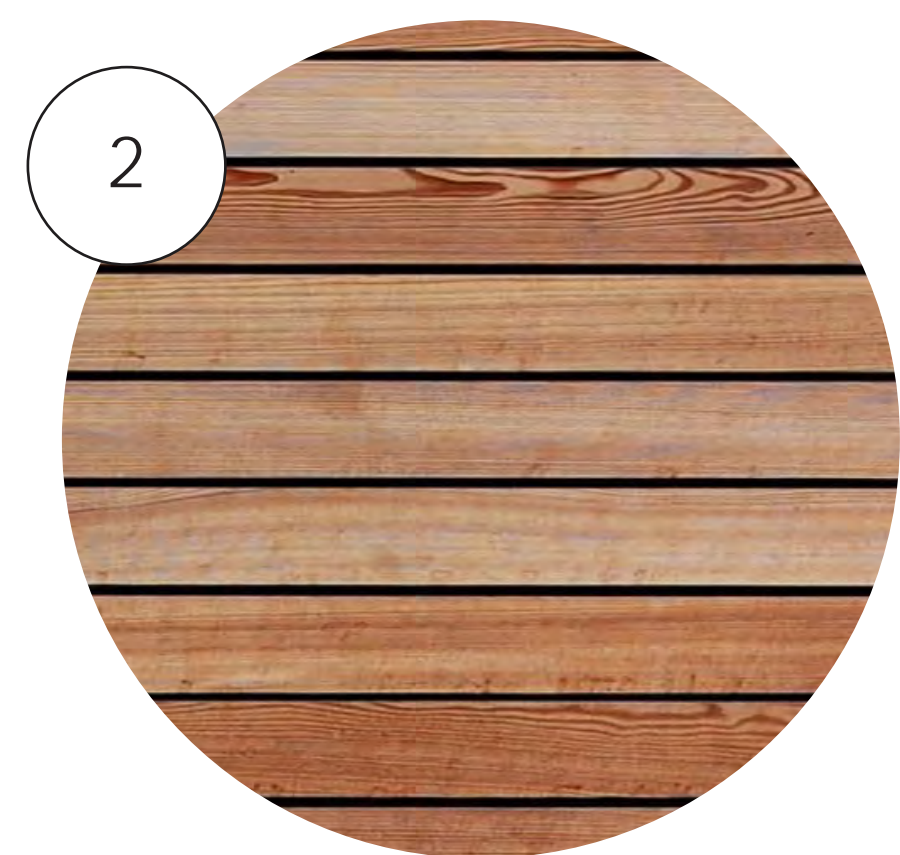


Level 1 - Ceiling Plan
1/8" = 1'0"

-  24"x24" Armstrong Armatuff Ceiling Tile
-  Armstrong Woodworks Grille
-  USG Acoustical Drywall Ceiling- Gypsum



1
Glass Horizons Mosaic
Tile Black Daltile



2
Wood Wall Panel Tile
Plank Road Wood Works

Materials

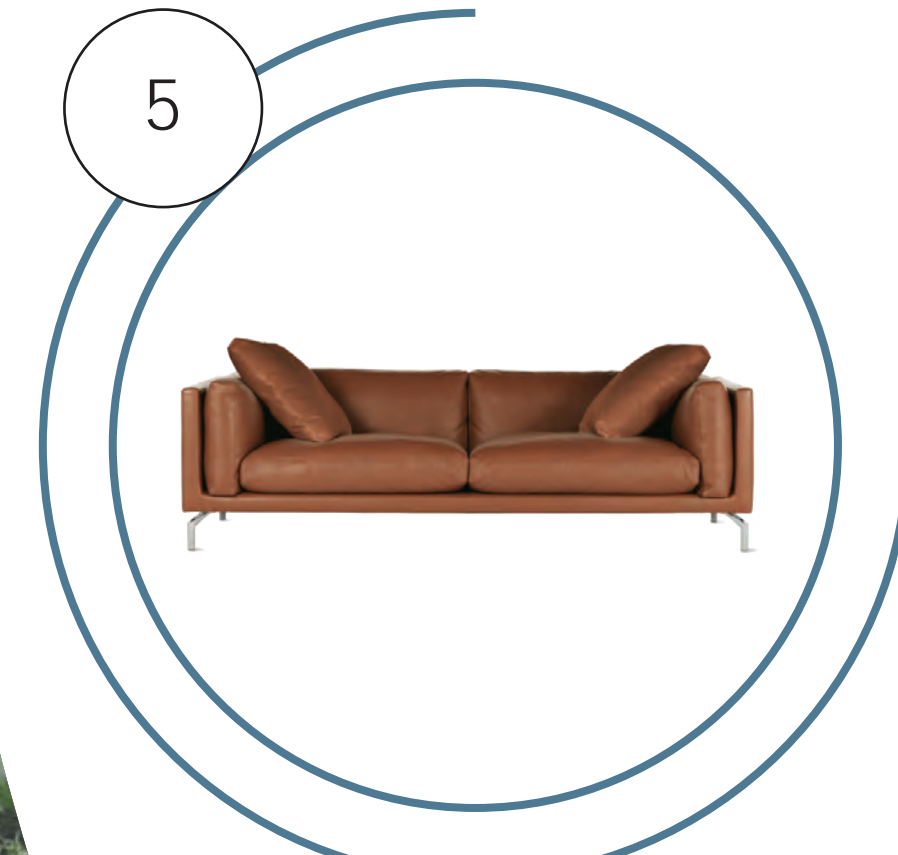
The materials palette was heavily influenced by natural resources. The balance of soft and rough elements creates the perfect textural palette. The use of durable wood materials throughout provides a comfortable warmth and connection to nature.



3
Gumi Pendant/ Helmut
Token Lights

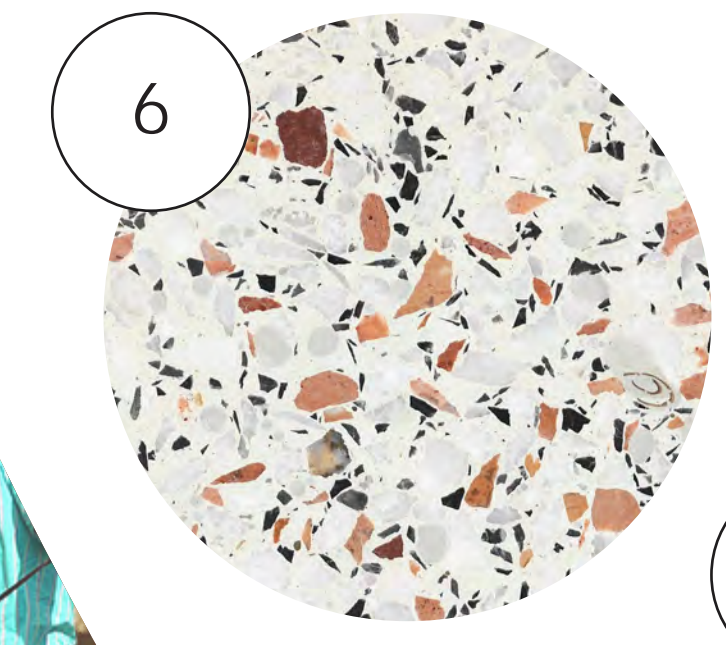


4
Exposed Brick
Painted Cream

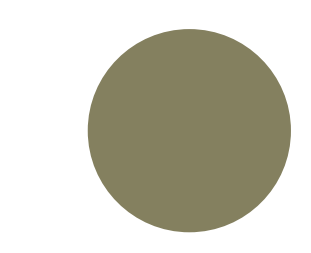


5
Como 92
Deisgn within Reach

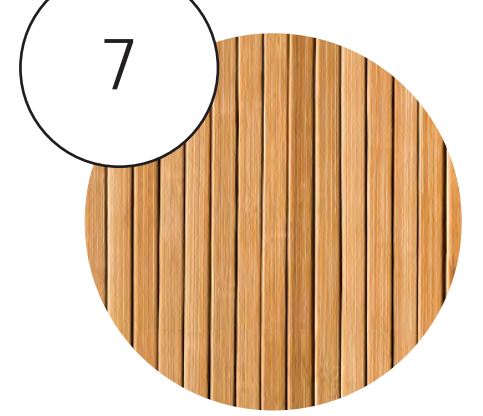
The feeling of community and togetherness once you enter the building is apparent. By placing all the bathrooms, showers, and the pet area on the east-side and everything else on the west, it divided the space into wet and dry places. To improve air quality, planters were placed near HVAC systems. Skylights and transoms were also placed along the pathway to provide better lighting environments and create unique shadows throughout the building. All architectural elements contribute to the biophilic design intent.



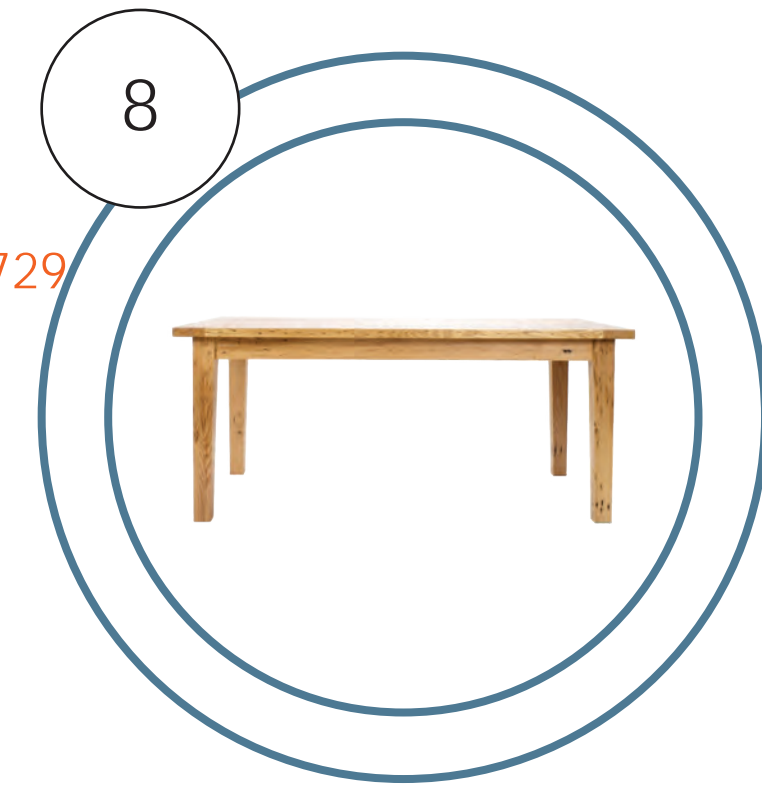
6
Antico Bianco T103
Porcelanosa



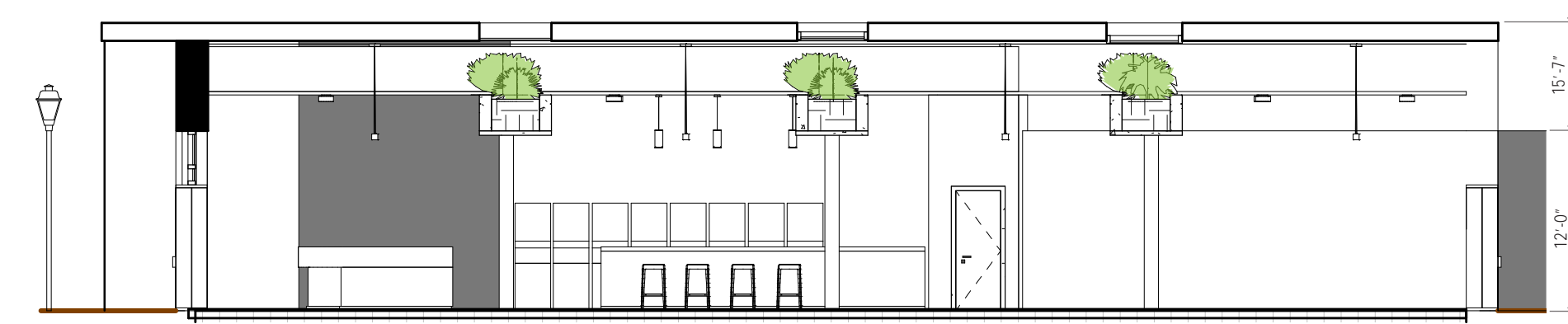
7
Edameme SW 7729
Shermin Williams



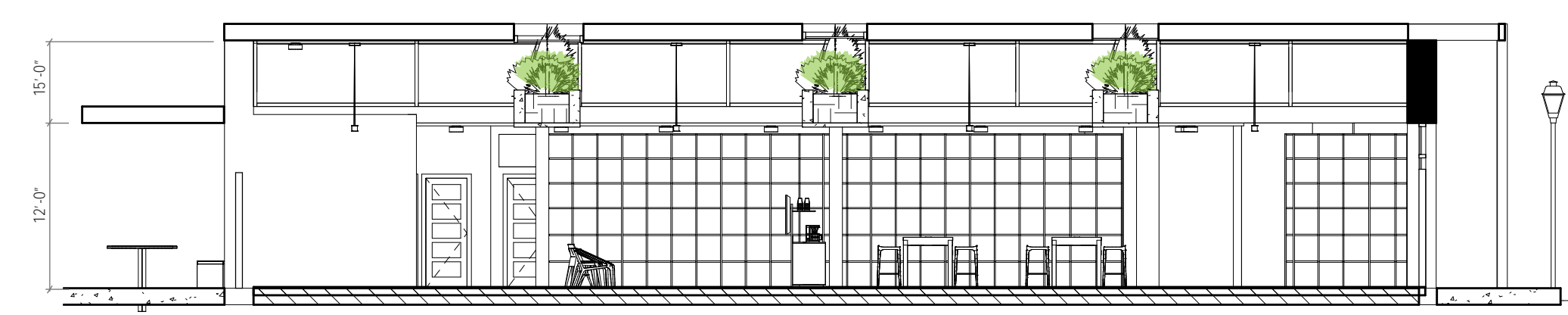
8
Wood Cladding
Armstrong



9
Nelson Farm Table
Plank Road Woodworks



West Elevation
1/8" = 1'0"



East Elevation
1/8" = 1'0"

The lobby and laundry area share a centralized location in the building that encourage socialization.



Lounge Seating

Cafe-Style Seating/ Charging Tables

Folding Table/ Additional Seating

Towel Support

Bathroom