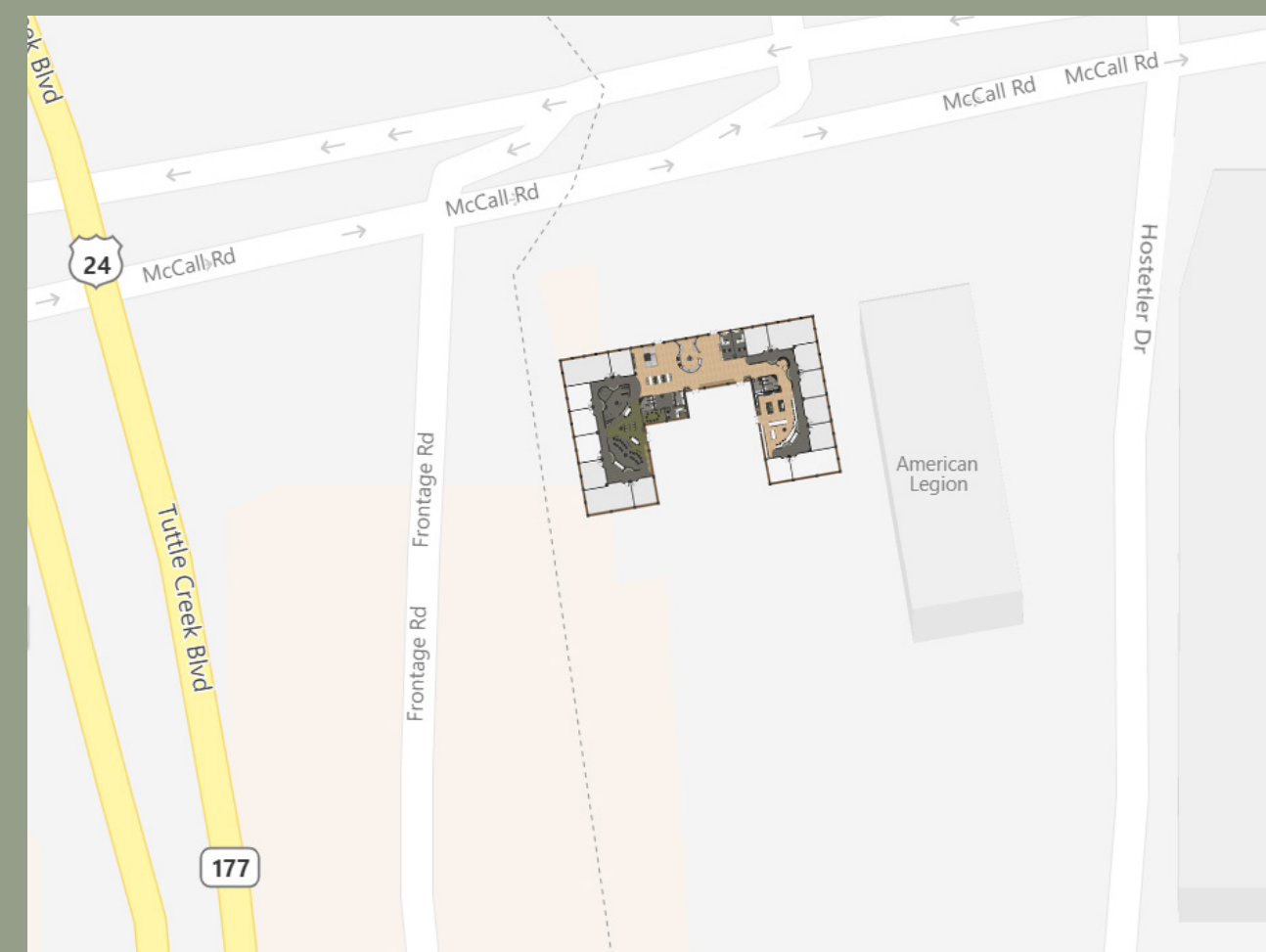




## SOCIAL SUSTAINABILITY

“Concerning how individuals, communities and societies live with each other and set out to achieve the objectives of development models which they have chosen for themselves, also taking into account the physical boundaries of their places and planet earth as a whole. At a more operational level, social sustainability stems from actions in key thematic areas, encompassing the social realm of individuals and societies, which ranges from capacity building and skills development to environmental and spatial inequalities. In this sense, social sustainability blends traditional social policy areas and principles, such as equity and health, with emerging issues concerning participation, needs, social capital, the economy, the environment, and more recently, with the notions of happiness, wellbeing and quality of life” (Young Foundation).



## LOCATION

- Perfect location for the Fort Riley and Leavenworth (KS) retired veterans have the option to relocate at Lorem. Off of Highway 24
- In close proximity to a grocery store, bank, and many restaurants
- US Army Fort Riley is home of the first infantry division, known as “Big Red One”, which was the most recognized wUS Army formation of WWII and led to infantry divisions all over the world



## PROJECT STATEMENT

Lorem Veteran Community and Services set social sustainability and rehabilitation into motion. With an emphasis on healing, support, and a sense of belonging. Biophilic design through indoor landscaping, a soothing color palette, and a selection of sustainable materials encourage growth and advancement. This living community provides on-site mental health

counseling services, re-integration to civilian life programs, physical rehabilitation, community meals, guest speakers, skills training and seminars, and small group activities. Common spaces are inclusive and inviting, as well as maintainable and properly spaced in this age of COVID-19. Lorem offers many opportunities for growth socially, mentally, and physically, for all.



## RESEARCH

### 1 Social Sustainability

#### Gehl

- Give people the choice of how public or private they want to be
- Make walking a priority
- Invite outdoor activities in and vice versa

#### FACTANK

- One-in-five Americans who say they don't know any of their neighbors report feeling lonely or isolated all or most of the time

### 2 Wellbeing

#### ArchDaily

- Bringing outdoor environments in; vegetation, ventilation, natural light

#### Forbes

- Designers will need to consider mental health, using lighting, materials, sound and acoustics. “We will have to consider what elements of design we can use to protect the public's health, including materials, distancing, physical separation or proximity, and interaction with objects.”

### 3 Veterans

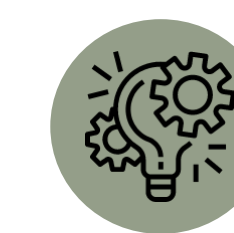
#### VOA

- “Unpreparedness of civilian employment; unrealistic expectations for jobs, salary, and understanding how military experience translates to civilian employment”
- Veteran clients feel more comfortable being around people with shared military experiences and identities

### 4 COVID-19

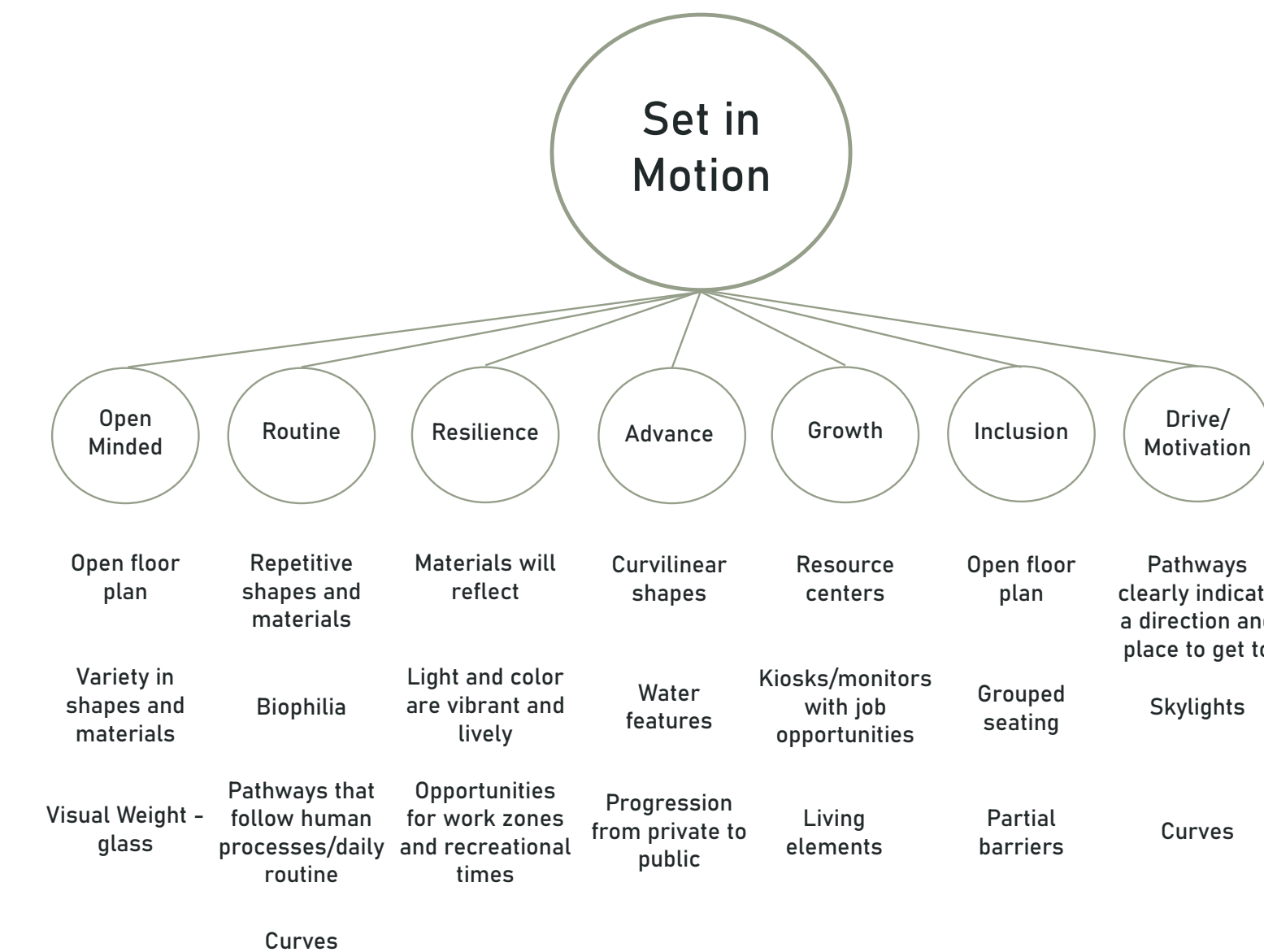
#### Genler

- The pandemic is affecting everyone's lives, but even more so for the elderly and those with underlying health conditions
- Design with antimicrobial materials (copper)
- Improve Air Quality natural ventilation strategies through integrated trees in seating and living walls



## CONCEPT - Set in Motion

### CONCEPT:

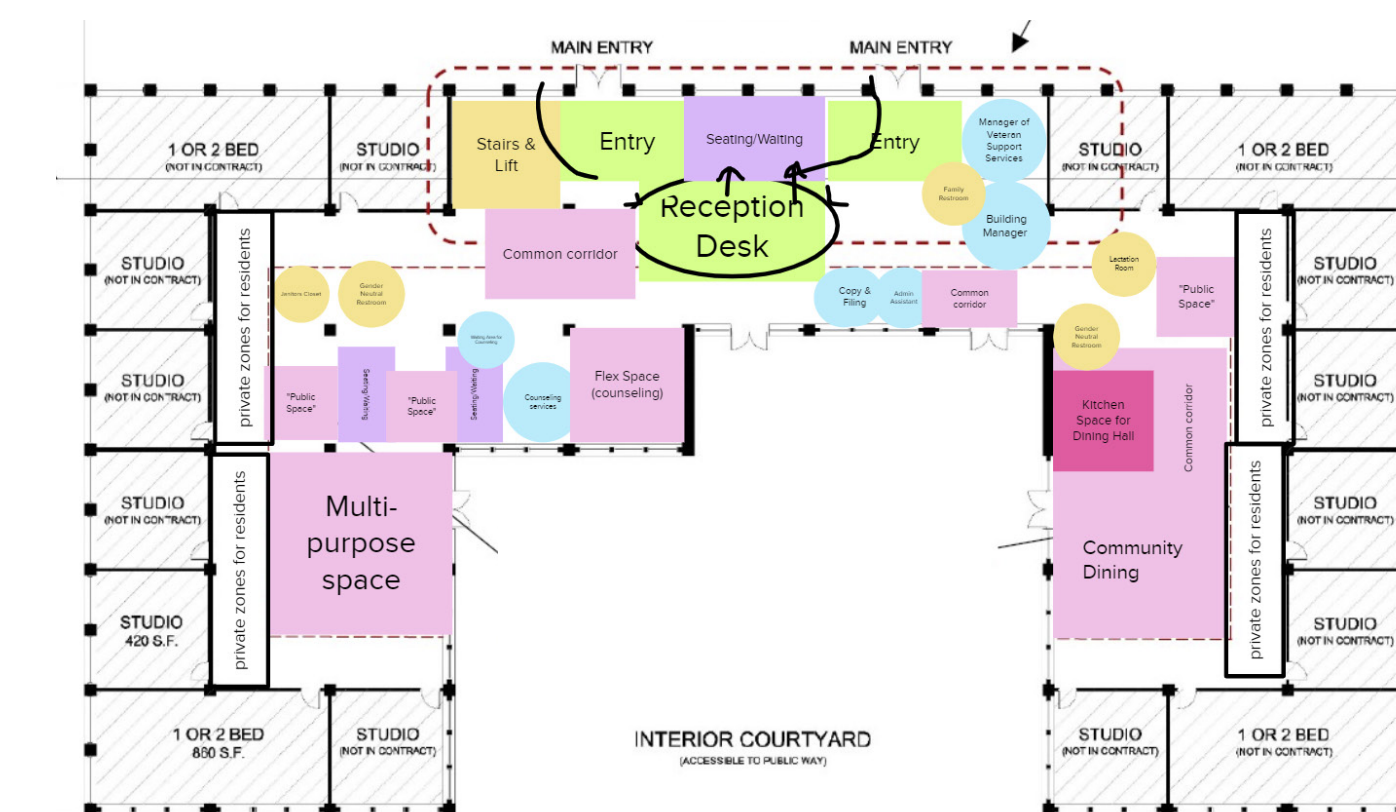


Floor Plan - Not to Scale

- 1 Lift & Stairwell: Private for residents, Accessible for all
- 2 Reception: Desk Space, Copier/Printer, Filing and Mail
- 3 Mail Boxes: Centrally located, Accessible for employees and residents
- 4 Administration Office: Equidistant from counseling and management services
- 5 Public Printing Station: Printing services for residents and guests
- 6 Management of Veteran Services Office: Office Space for Veteran support, Lounge chairs to encourage interaction with management
- 7 Office for Building Management: Office space for building operations, Lounge seating to encourage interaction
- 8 Information Resource: Touch screens for employment opportunities, Serves as a bulletin
- 9 Lactation Room: Private quarters, Sink, changing station, refrigerator
- 10 Gender Neutral Bathrooms: Floor to ceiling stalls, Accessible end stall, Accessible sinks and airdryers
- 11 Janitor Closet: Shelving and floor space for maintenance materials
- 12 Accessible Kitchen: Workspace Islands, Coffee station
- 13 Dining Hall: Small gathering space, Group counseling, discussions, guest speakers, book clubs
- 14 Laundry Alcove: Accessible washer and dryers, Semi-private for residents
- 15 Multipurpose Space: Flexible for medium and large gatherings, musical performance and training workshop space
- 16 Fitness Area: Physical Rehabilitation room, Exercise equipment
- 17 Flex Space: Small gathering space, Group counseling, discussions, guest speakers, book clubs
- 18 Waiting Area: Outside of counseling services
- 19 Head of Counseling Services: Office used for 1 on 1 counseling sessions
- 20 Family Restroom: Fully accessible, Child step stool for lavatory
- 21 Work Station Pods: Encourages social interaction while allowing for individual work
- 22 Social Cove: Bench seating, Paired facade doors to encourage interaction

## PROCESS WORK

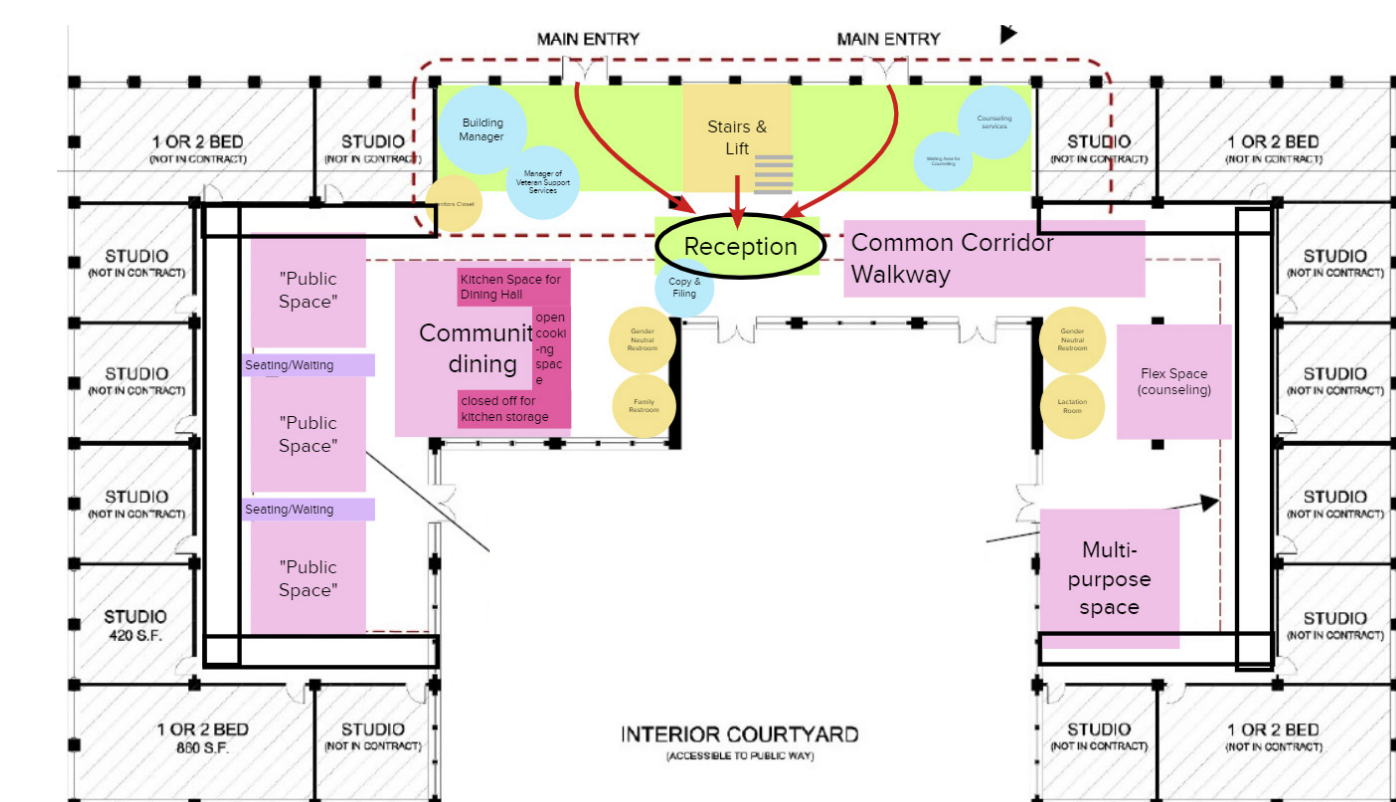
- Bubble diagramming
- Space layouts



We space planned and bubble diagrammed the sizes of each room and took multiple configurations to come up with the finalized floor plan.

Having the reception and stairs centered was important, along with zoning off common spaces so that they are functional and practical.

Situate large gathering spaces in both wings to balance social interaction.



# LAUNCHING INTO LOREM!



Center

- Plexiglass protectant
- Universal varied countertop heights
- Herman Miller Valor Plus Chair
- Herman Miller Pullman Sofa
- Herman Miller Eames Tables

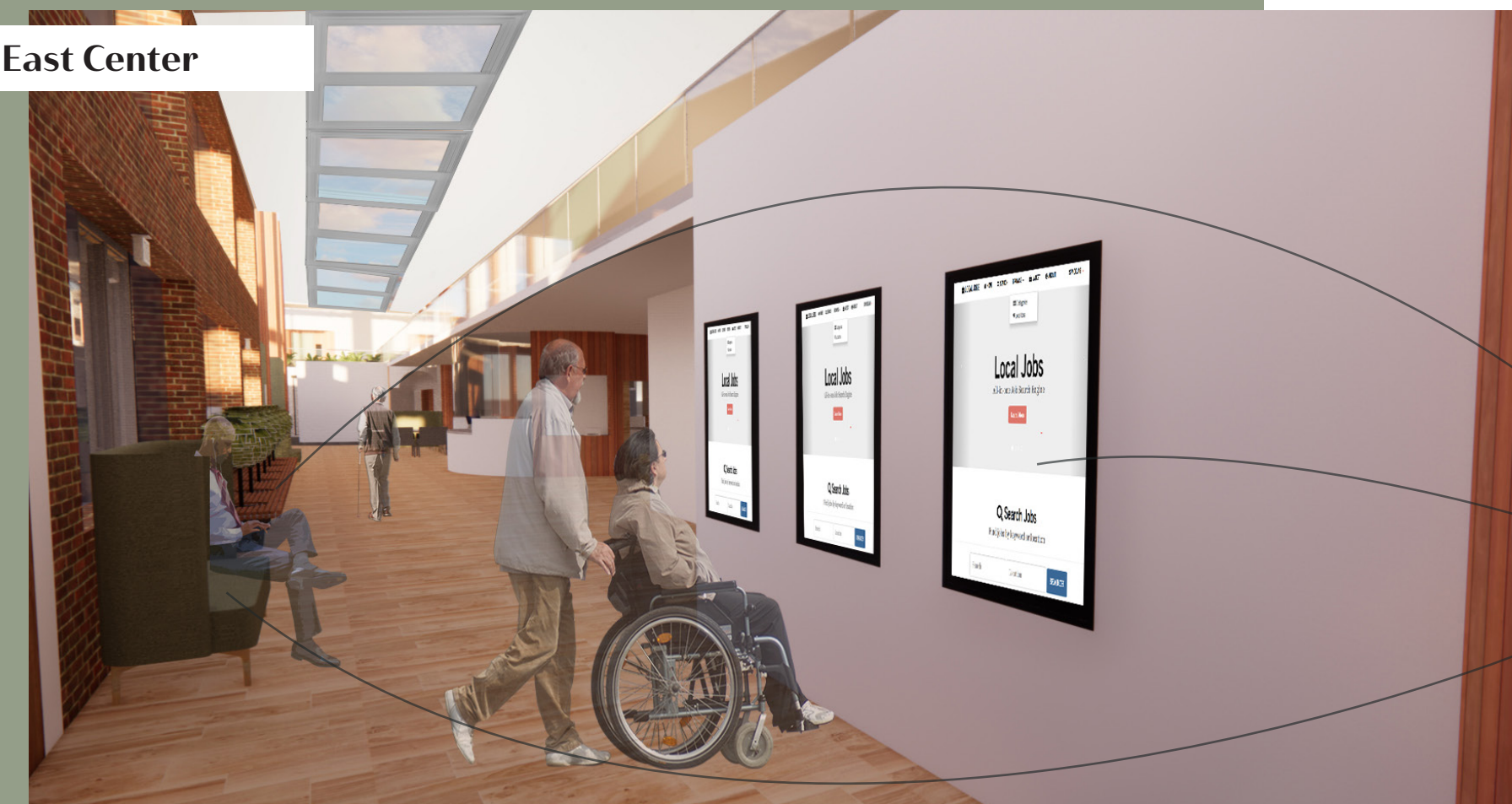
Entryway View



East Wing

- Galley kitchen sink
- Fireproof tile near cooking zones
- Herman Miller Aside Chairs (stackable)
- Long tables to encourage social interaction
- Flexible seating for accessibility

Dining Area View



East Center

- TechnoGym Reclined Formabikes & Skillmill Go treadmills
- Steelcase Romeo + Juliet Bench with vegetation
- Touchscreen Resources
- Herman Miller Pullman Sofa

Exercise Room View



Residential Facade View

- Wayfinding (room numbers and varied door colors)
- Personalized Screen Keypad
- Maintenance storage in overhead cabinets
- Landing space for clothes and supplies
- Accessible Washer and Dryers



Kitchen View

- Microwave station
- Kitchen available for vendor and resident use
- Trash and recycling
- Downdraft ventilation system



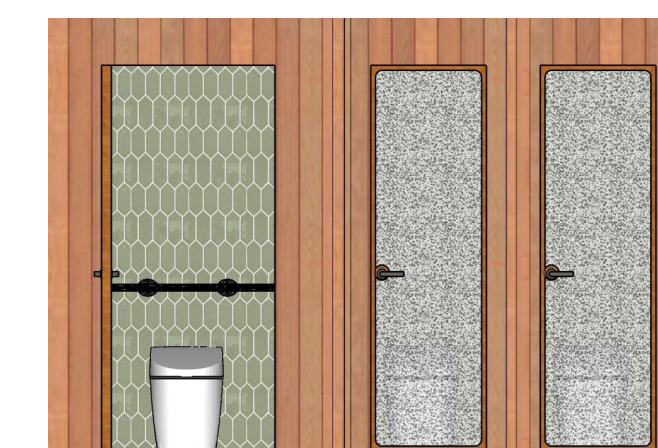
Communal Laundry View



Kitchen Elevations - North (bottom) & West (top)



Bathroom Views - West (bottom) & Northeast (top)



West Wing

- Space available for independent and professional use
- Mirrored walls
- Herman Miller: Sofa
- Stackable chairs
- Tables
- Covid-19 Moveable Screen
- Steelcase Bench
- Suspended Acoustic Panels with vegetation
- Acoustic wall panels

Exercise Room View



Multi-Purpose Space View

## Copper finishes

- Hardware finish
- Antimicrobial

## Human Connections Carpet Tiles

- Sustainable
- Certified carbon neutral product
- 78% recycled content
- 100% recycled nylon yarn

## Cambria Countertops in Salt Lake

- Non-porous, durable, and easy to clean
- Does not require repolishing

## FilzFelt in Fg. 1 423 Hellgreau

- 100% wool felt that is 100% biodegradable
- Cork composite backing that is 93% preconsumer recycled content
- Green guard certified

## Forest Park Daltile in Summertree

- Preconsumer recycled materials
- Made in USA
- Slip resistant technology

## Center City Daltile in Chadwick Charcoal

- Slip resistant technology

## Mythology Glazed Ceramic Daltile in Chronos

- Slip resistant technology
- Post & preconsumer recycled content
- Fire resistant and waterproof

## Louvered Wood Paneling

- Recyclable wood

## Brentano Fabric with Nanotex Technology

- Antimicrobial
- Recyclable & durable
- 100% biodegradable
- Does not contain toxic chemicals

## Human Connections Carpet Tile

- Sustainable
- Certified carbon neutral product
- 78% recycled content
- 100% recycled nylon yarn

## Research

Bialik, K. (2020, May 30). Americans unhappy with family, social or financial life are more likely to say they feel lonely. Pew Research Center. <https://www.pewresearch.org/fact-tank/2018/12/03/americans-unhappy-with-family-social-or-financial-life-are-more-likely-to-say-they-feel-lonely/>.  
 Cole, R. (2020, April 18). Five Ways COVID-19 Is Changing The Future Of Interior Design. Forbes. <https://www.forbes.com/sites/reginacole/2020/04/17/five-ways-covid-19-is-changing-the-future-of-interior-design/?sh=46bc2d852ee2>.  
 Design for Social Sustainability. The Young Foundation. (2018, November 27). <https://www.youngfoundation.org/publications/design-for-social-sustainability/>.  
 Harrouk, C. (2020, May 23). Architecture post COVID-19: the Profession, the Firms, and the Individuals. ArchDaily. <https://www.archdaily.com/939534/architecture-post-covid-19-the-profession-the-firms-and-the-individuals>.  
 Kintzle, S. (2015, May). Exploring the Economic & Employment Challenges Facing U.S. Veterans. A Study of Volunteers of America Service Providers and Veteran Clients. [https://www.voa.org/pdf\\_files/a-study-of-volunteers-of-america-service-providers-and-veteran-clients](https://www.voa.org/pdf_files/a-study-of-volunteers-of-america-service-providers-and-veteran-clients).  
 Making Cities for People. Gehl. (2020, November 17). <https://gehlpeople.com/>.  
 March 13, 2020 | B. J. K. H. (2020, March 13). Designing Office Building Lobbies to Respond to the Coronavirus: Dialogue Blog: Research & Insight. Gensler. <https://www.gensler.com/research-insight/blog/designing-office-building-lobbies-to-respond-to-coronavirus>.  
 TLCD Architecture. FilzFelt. <https://www.filzfelt.com/>.