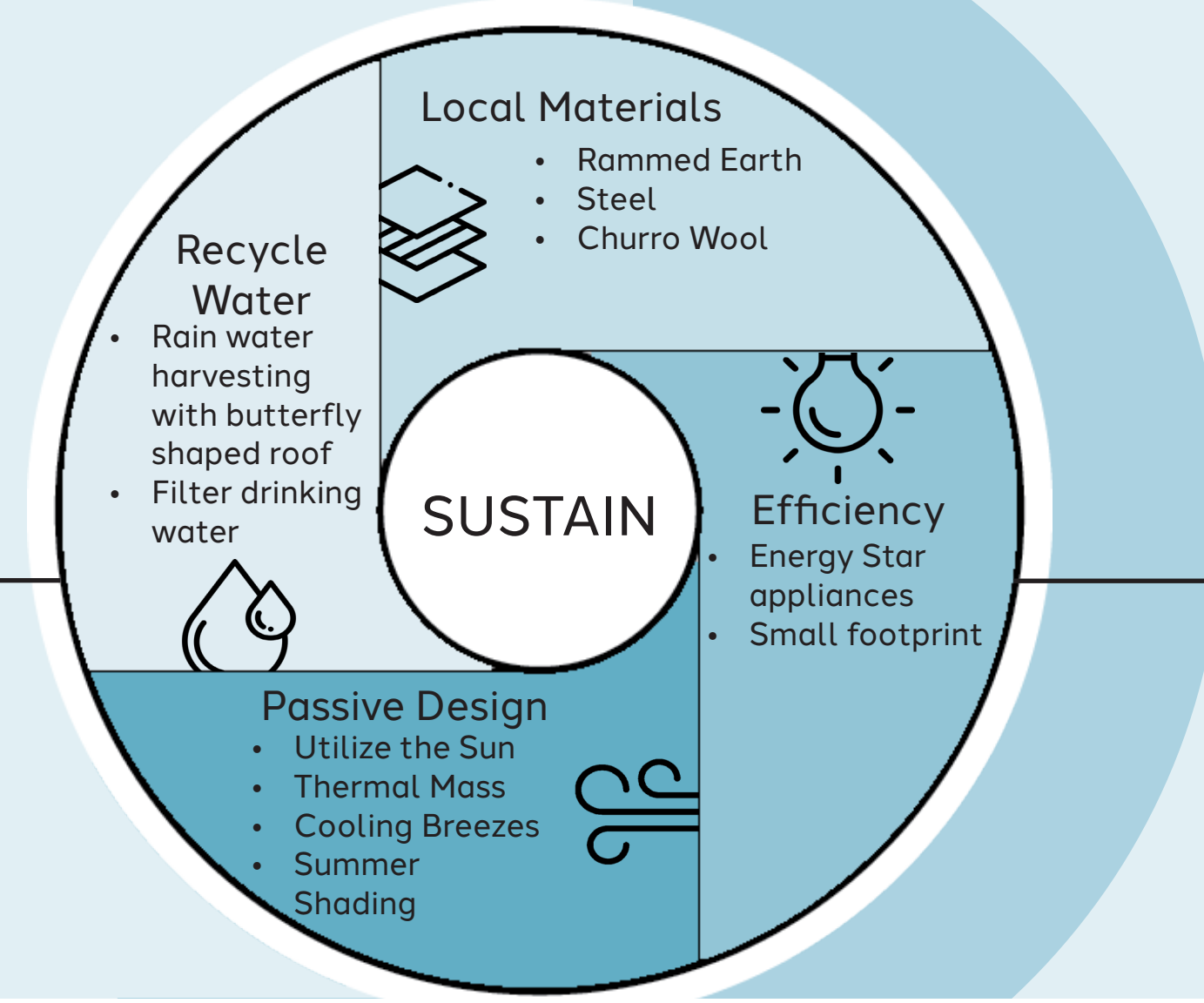


Concept

LOOM interconnects Diné be' iiná and hózhó to bring awareness of the Navajo peoples of the Americas. The concept encompasses the philosophy of hózhó meaning living in harmony, beauty, balance and goodness. Weavers collect materials from the natural world, Diné be' iiná, the churro sheep is the Navajo life way. This sacred space emulates the importants of the two doctrines to nurture individuals and communities of the Navajo peoples.



Navajo

The Navajo textile artists honor their ancestry with the textiles they create and use the sales to share the history of their people and bring awareness of indigenous peoples of the Americas. To support this process the design the spaces should take these ideas with consideration of cultural sensitivities:

- Symbolism
- Community
- Honoring the traditions of the Navajo artists

Shipping Containers

Shipping containers have purposes beyond international commerce. One particular use involves dwellings and small business operations. There are multiple reasons RSCs are suitable for re-use in building homes:

- Ease of modification
- Efficient options
- Versatile size and construction
- Environmental responsibility
- Durable
- Adaptable

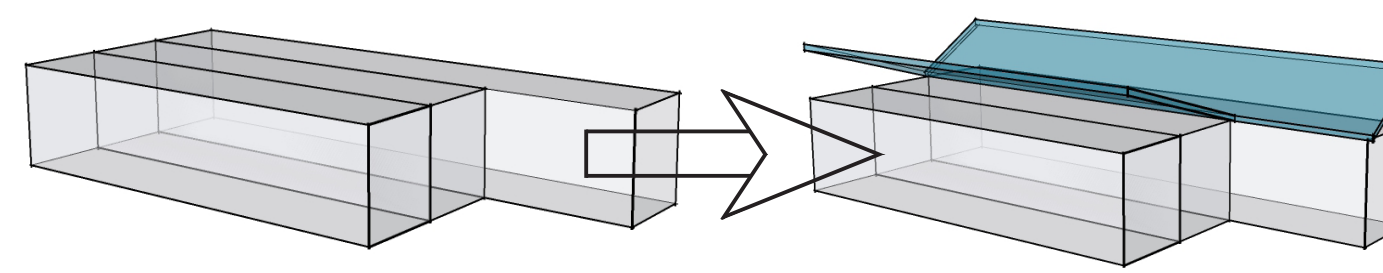


Location

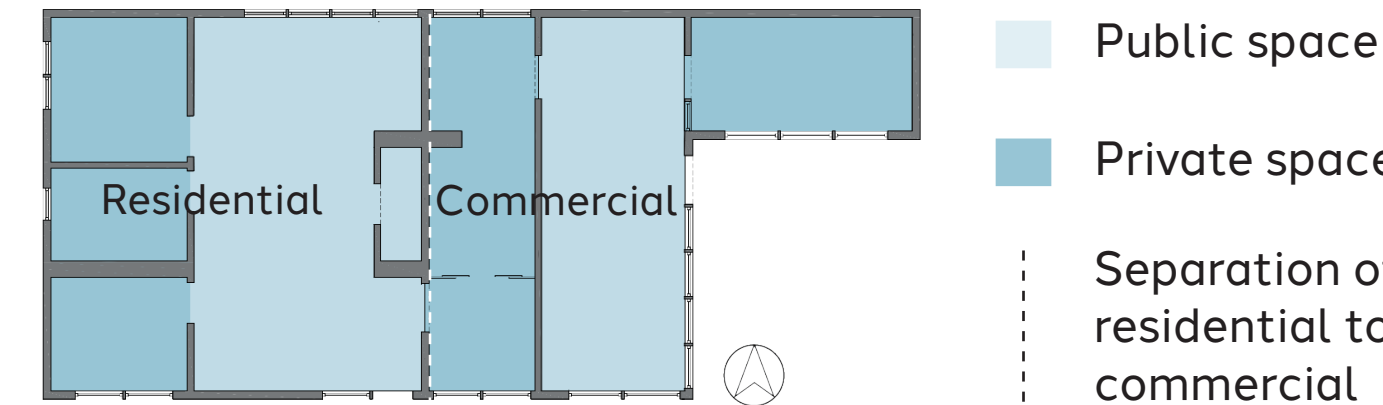
Flagstaff, Arizona

- Adjacent to Downtown**
Multiple green spaces and parks located within the community with bike trails.
- Green Spaces**
Located near at the edge of downtown allows project to be in both commercial and residential areas.
- Bus Routes**
Project is located near city bus stops in addition to Mountain Bus Line that takes peoples to the Navajo Nation and surrounding areas.

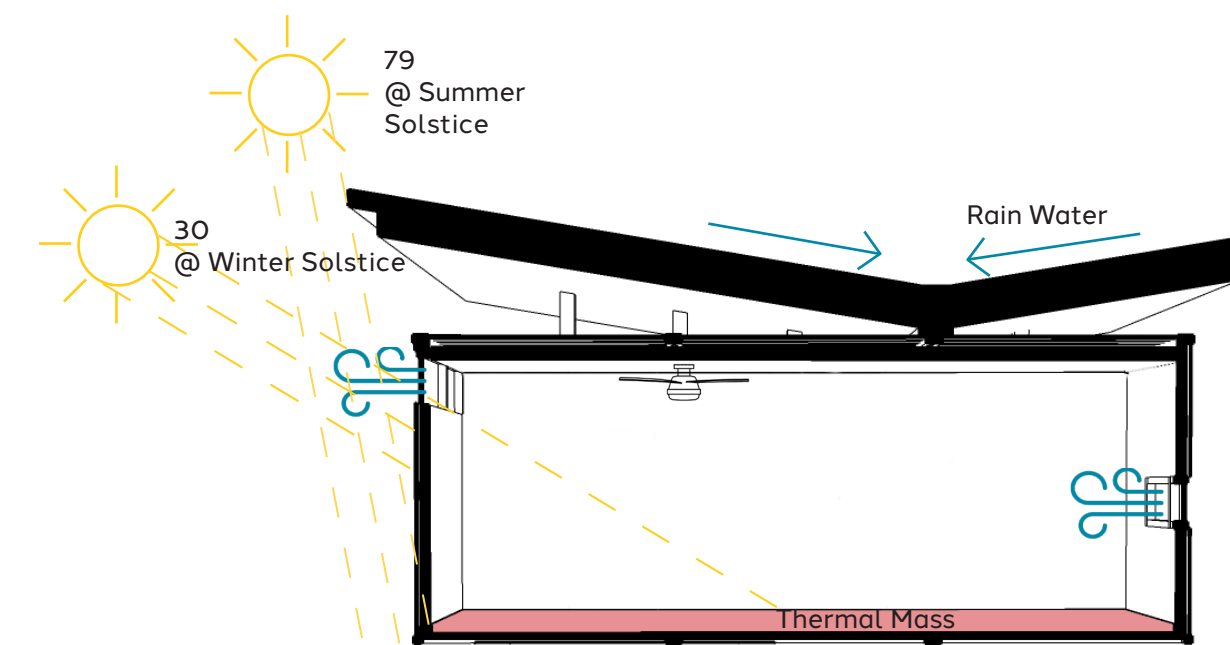
Formation of Volume



Public vs. Private

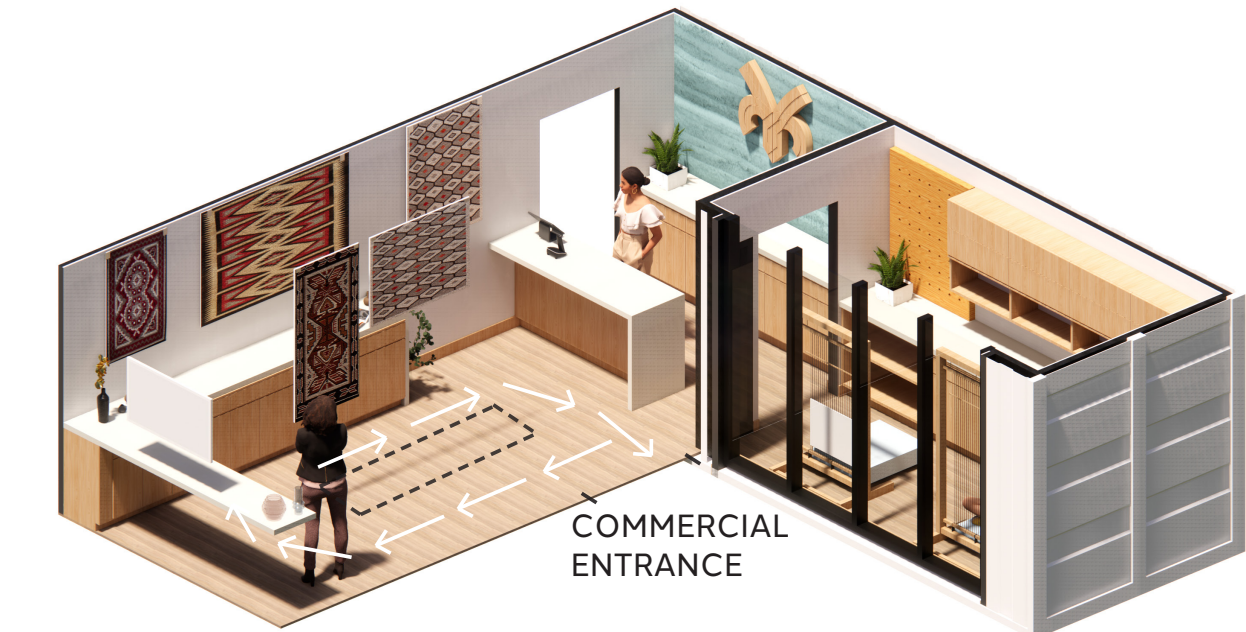


Passive Design



The roof of LOOM is designed to harvest rain water, protect the interior from summer sun, and let the winter sun enter to warm the thermal mass flooring. Clerestory windows and ceiling fan allows cool breezes to pass through.

Circulation



A single path through the showroom allows customers to maintain physical distancing while shopping and learning about the Navajo culture. The maker's space is excluded from this circulation to protect the artist.

Legend

- Built-in cabinetry with closet space at end tables.
- Tank-less Appliances
- Murphy work space and guest bed.
- Living area cabinetry includes coat hanging space, extra chair storage, wood storage, and fireplace.
- Residential entry
- Fire-rated door separation commercial and residential
- Sliding doors for when privacy is needed in office space.
- Hanging area for photographing textiles
- Central hanging textiles
- Commercial entry
- Weaving looms
- Yarn storage
- Feature/ Logo wall
- Stacked washer and dryer with folding area.
- Table can accommodate up to 12 people

RESOURCES:

Cannon, H. (2010, June 13). Sacred sheep revive Navajo tradition, for now. NPR. Retrieved October 4, 2021, from <https://www.npr.org/templates/story/story.php?storyId=12797442>.

Kahn, John Diné, M. & Kaitan, M. (2015, May). Living in health, harmony, and beauty: The diné (Navajo) hózhó wellness philosophy. *Global advances in health and medicine*. Retrieved October 4, 2021, from <https://www.ncbi.nlm.nih.gov/pmc/articles/PMC4424938/>.

Koenig, S. H. (1972). *Sky, sand, and spirits: Navajo and Pueblo Indian art and culture*. Hudson River Museum.

Linford, L. D. (2000). *Navajo places: history, legend, landscape: a narrative of important places on and near the Navajo reservation, with notes on their significance to the Navajo culture and history*. University of Utah Press.

Maxwell, G. S. (1963). *Navajo rugs: past, present & future*. Desert-Southwest Publications.

Navajolifeway. (2015, November 3). A short history on Navajo-Churro Sheep, the Navajo lifeway. *The Navajo Lifeway*. Retrieved October 4, 2021, from <https://navajolifeway.org/a-short-history-on-navajo-churro-sheep/>.

Photographing Museum Textiles. *Museum Textile Services*. (2019, June 11). Retrieved October 4, 2021, from <http://www.museumtextiles.com/blog/photographing-museum-textiles>.

Resources and information. *Coconino County Arizona*. (n.d.). Retrieved October 4, 2021, from <https://coconino.co.gov/1634/Resources-and-Information>.

Storing textiles. *The George Washington University Museum and The Textile Museum: The George Washington University*. <http://museum.gwu.edu>. (n.d.). Retrieved October 4, 2021, from <https://museum.gwu.edu/storing-textiles>.

Wheat, J. B., & Mitchell, E. (1984). *The gift of Spiderwoman: southwestern textiles, the Navajo tradition*. University Museum, University of Pennsylvania.



Floor Plan

Work/Life Balance

- Separating Spaces
- Two entrances
- Hidden residential entry
- Separation of intimate spaces from business

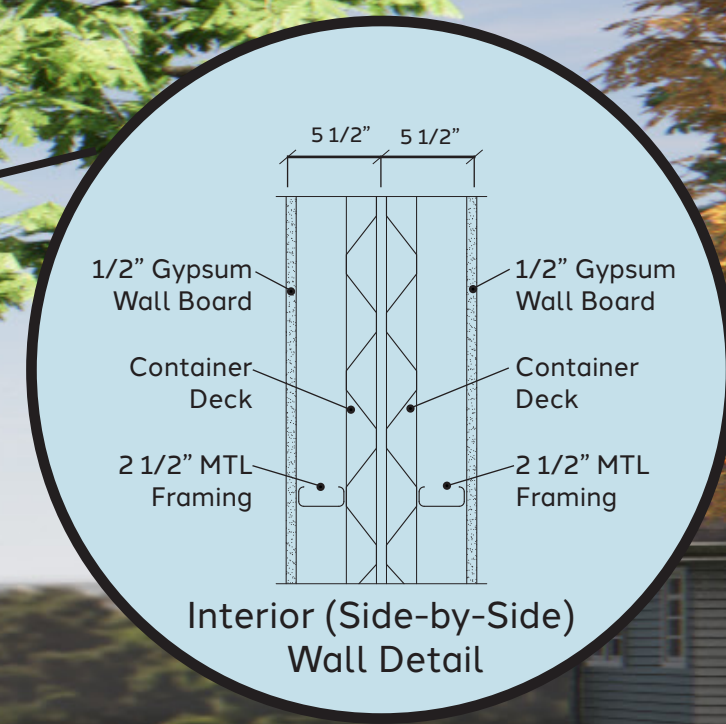
Community

- Bring awareness to the history of Navajo peoples
- Showcasing creation
- Depiction of Symbols

Post Pandemic

- One-Way circulation
- Universal design
- Cleanable material selection





- 1 RAMMED EARTH
- 2 MAPLE WOOD
- 3 SILESTONE

Materials

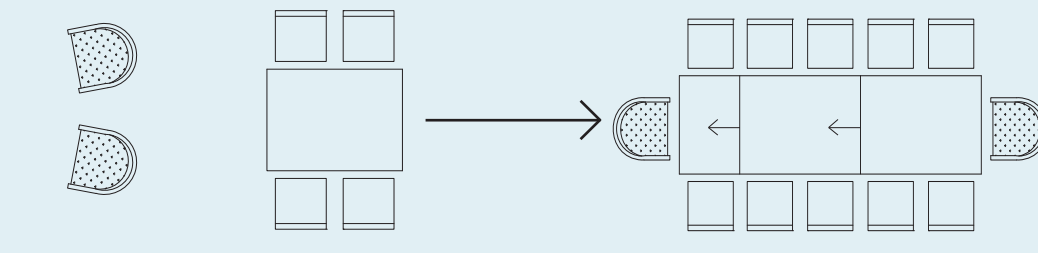
The materials used in this project have an emphasis on sustainability. Rammed earth is local to northern Arizona and, in this application, has thermal massing properties. Maple wood which is used in the cabinetry is native to the Arizona area. Using local materials cuts down on shipping costs and emissions of transporting materials over long distances. The counter tops are made of silestone from Cosentino that is carbon neutral. They use renewable electricity and water while using recycled materials to build their products.

Customer Experience

LOOM is a place for people to fully immerse themselves into the culture of the Navajo people, whether that be through textiles or through history. The building has landscaping near the entrance, and a welcoming window view of the maker space. As customers walk up to the entrance, they can see into the maker space to have a taste of what they are about to experience inside. Walking through the showroom is indulging them into the Navajo culture through hanging textiles that customers can purchase along with informational displays of Navajo history. The makers space is mainly private but can be flexible to invite people for small visits. The glass doors open up allowing for small exhibits to be held in the maker space or just to open up to nature during working time.

Dining Table Diagram

Dining table, in every day use, fits 4 users. For occasional large gatherings, wing extensions added to seat 12 guests. Extensions are kept in fireplace storage space.



Residential



- Operable back splash windows allow for ventilation.
- Laundry area is behind door. This helps with excess noise from stacked washer and dryer.
- Chairs can be used when dining table extends to accommodation 12 peoples.
- Large counter top gives the client large work area when preparing purchased textile or item.

Dining/Kitchen Space

Commercial



Full height windows allow customers to see into maker's space as they enter the showroom.

- Logo represents Diné be' iiná, Navajo lifeway, the churro sheep.
- Maker's space location lets customers know that they are not allowed to enter without invitation.
- Peg board and shelves for yarn and tools storage.
- Looms and cushions can be moved and rearranged for artist.

Cash/Wrap



Maker's Space



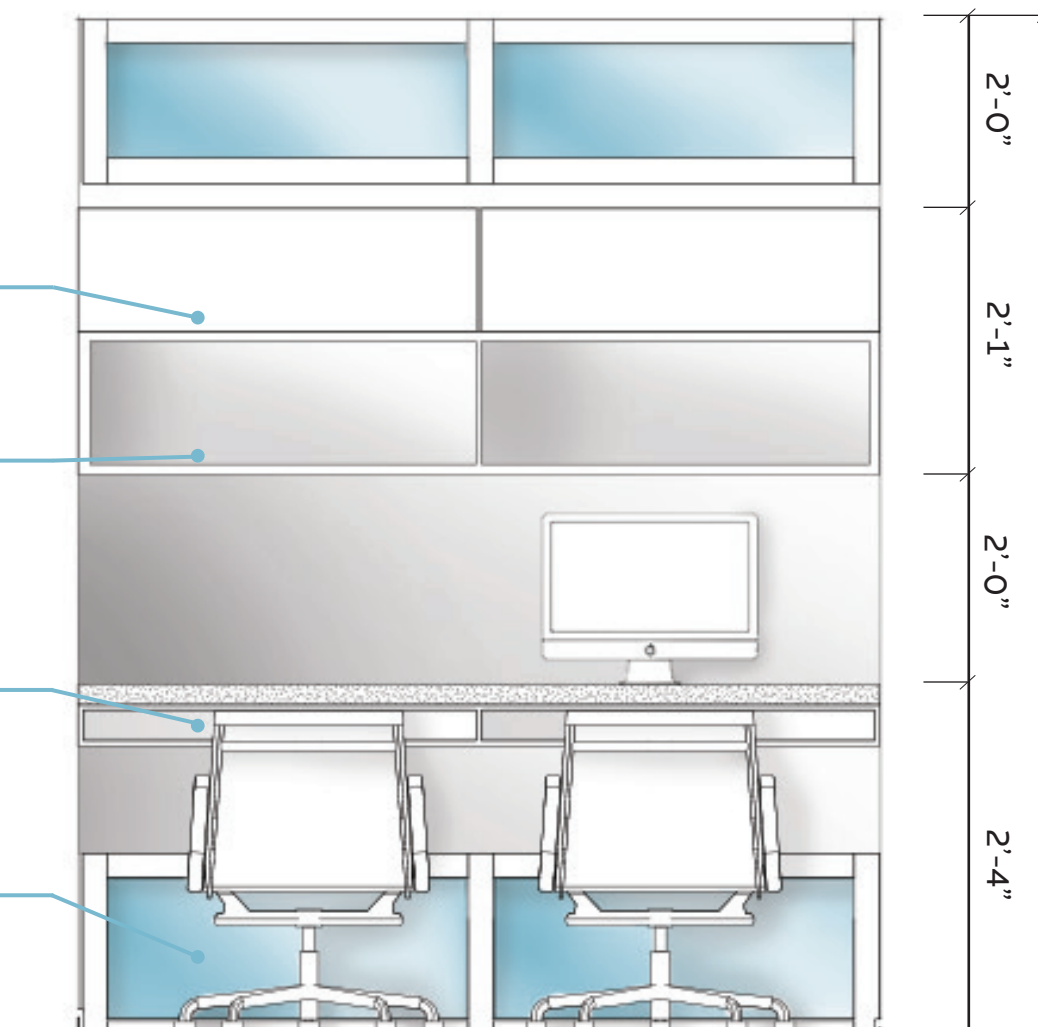
- Clerestory windows are operable for breeze throughout house.
- Wood-burning is sacred to the Navajo peoples. Even the ash is important.
- Clerestory and floor windows allow natural light to enter the space without direct sunlight affecting textiles.
- Screen brings awareness of indigenous people of the Americas through history or can display upcoming events.

Living Space



- Track lighting can be adjusted when showroom is rearranged.
- Linear file storage
- Shelf for display and books
- Easy to access shelf for pencils and papers.
- Natural light for photography area, located nearby.

Showroom



Elevation of Office