

KINSHIP

NAVAJO TEXTILES

KIN.SHIP.
/kin,SHIP/

A sharing of characteristics and origins. Kinship refers to how individuals are related to one another (by blood, marriage or adoption). Kinship networks traditionally would be used to create the family unit by giving the individuals a reason as to why they should remain interconnected." (Kinship, 2021).

In the Dine(Navajo) culture, friendship is symbolized by two arrows crossed against each other. Kinship as a brand strives to bring a community of Indigenous and non-Indigenous people together, to achieve hozho through enrichment, education, and support of Navajo culture, art and history.

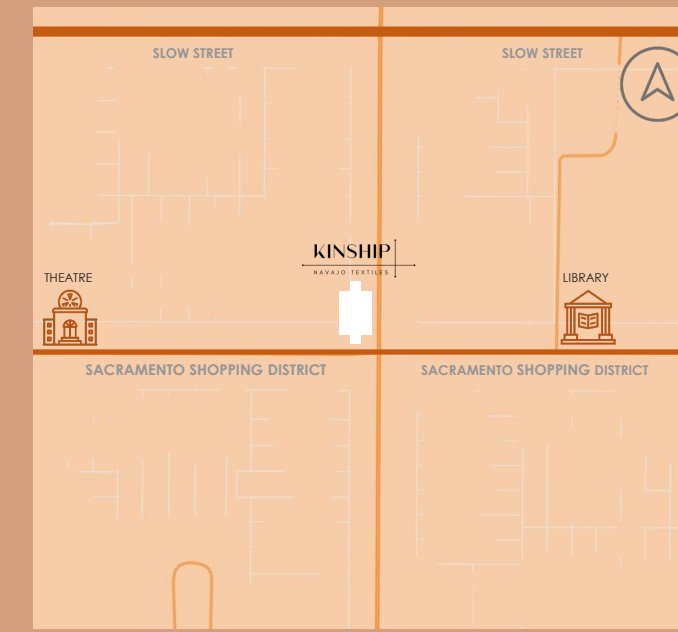
LAND ACKNOWLEDGMENT

We would like to acknowledge the Ramaytush Ohlone people, who are the traditional custodians of this land. We owe our respect to the Indigenous peoples, past, present, and future who reside upon the land which Kinship sits. We thank them for supporting other Indigenous peoples which have relocated to their land, specifically those of Navajo descent. We admire their resilience and adaptability in the process of connecting with other Indigenous communities while staying true to their own ancestry. We look forward to walking alongside them in the process of creating awareness of Indigenous culture and history.

CONCEPT STATEMENT

Kinship is a live-work space that evokes beauty though feelings of Hozho; the paramount living principle of Navajo peoples. Hozho revolves around achieving beauty in life through harmony and balance in a continuous, never-ending journey. Antelope Canyon, a sacred location to Navajo peoples, inspires a literal representation of Hozho principles in Kinship. Its movement of light along rhythmic, asymmetrical features creates harmony through balanced irregularity.

Organic walls accented by cove lighting guide users through Kinship. Skylights create moments of stoic beauty and enlightenment but ultimately, movement of light creates intentional circulation that encourages a continuous journey on.



LOCATION RATIONALE

A few blocks north of San Francisco's core, Kinship can be found in the Sacramento Street Shopping District. Today, it is known for its luxe modern home furnishing stores, fashion boutiques, and salons. The district is home to 35+ locally owned businesses and attracts residents and tourists eager to explore what small shops have to offer. This allows an opportunity to share & celebrate the art, culture, and history of Navajo peoples with an array of people, creating important connection – kinship.

San Francisco offers Slow Streets Program which is designed to limit traffic on certain residential streets and allow people to walk and bicycle. The goal of this program is to provide more space for socially distant essential travel and exercise for the neighborhood.

San Francisco also has the largest public transit network in the country. There are many bus stops along the Sacramento St. which allow people to come and go easily. This decreases use of private vehicles.

HOZHO

Hozho is defined as "Encompassing beauty, order, and harmony. It expresses the idea of striving for balance." (Brigham Young Museum of Art, 2003). To the Dine, it is the paramount principle of life. As humans, we are constantly engulfed in a never-ending journey towards achieving balance and harmony in our lives. Hozho is essential in the Dine life, especially for weavers as they themselves must live in Hozho in order to create beautiful textiles and baskets. If the weaver is not living in Hozho, their work reflects it, lacking the balance and harmony required to make beautiful textiles (Brigham Young Museum of Art, 2003).

ANTELOPE CANYON

Antelope Canyon is a sacred land to the Dine. It is a symbol of Mother Earth's gifts and powers. It is blessed every four years by the natural elements that have helped shape its beauty. The Dine believe that before entering the sacred land, it is essential to first pause and quietly offer their respects so that they can be protected. As they embark on their journey through the canyon, the Dine are engulfed in feelings of harmony created by something greater than themselves (Canyon A, 2019). Antelope Canyon's organic and asymmetrical features accented by sunlight from above create great inspiration for Kinships retail interior, as their overall impact reflects feelings of Hozho.

LOCATION HISTORY + IMPACT

San Francisco was a prominent relocation site for many Native Americans in the mid-1950s when The American Indian Relocation Act was passed. It encouraged Native Americans to leave their homes on reservations to live in urban cities. They were promised support from the government but received very little (Urban Relocation, A.I., 2016). As a result, they struggled to adjust to life in the cities, while also being stripped of important pieces of their identity (Bay Area Equity Atlas, 2021). To support relocated and remaining Native Americans in the Bay Area, one of the first urban American intertribal community centers in the nation was established in 1955 (International Friendship House). To this day, it remains in Oakland, California just an hour east of Kinship.

Their vision statement creates inspiration for Kinships mission in San Francisco - to share and create awareness of Navajo culture through kinship: "The mission of IFH (International Friendship House) is to promote the ability of native people to thrive in an urban environment through the ceremony, traditions, and cultural connection, to provide a safe environment to strengthen cultural identity, promote health, inter-generational healing and support the development of extended family." (IFH, 1955).

UNIVERSAL DESIGN

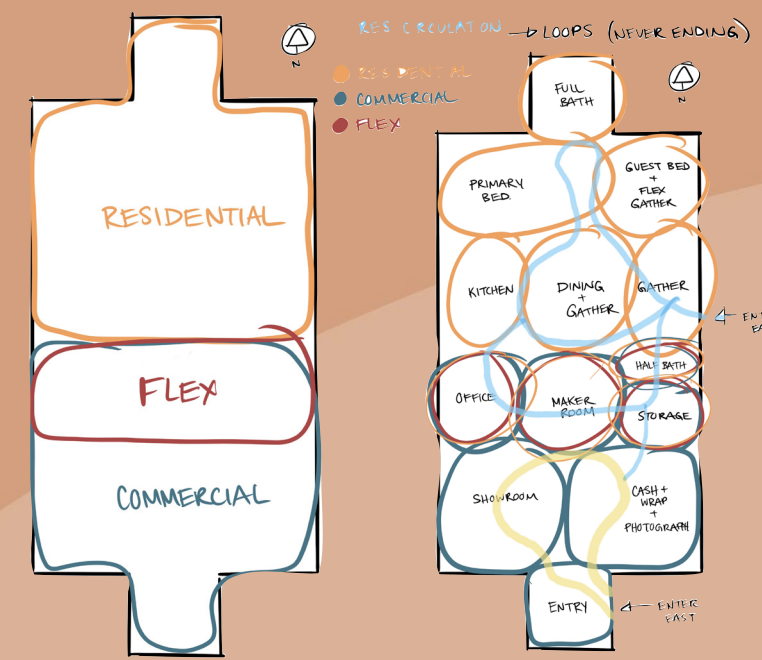
Kinship was designed by considering and accommodating the seven principles of universal design (ADA).

1. Equitable Use
2. Flexibility in Use
3. Simple and Intuitive Use
4. Perceptible Information
5. Tolerance for Error
6. Low Physical Effort
7. Size and Space for Approach and Use

Universal design allows all users to access all spaces without restriction. It breaks down the walls between the disabled and non-disabled and those between younger and older people.

All design decisions made for Kinship are directly influenced by the abovementioned seven principles.

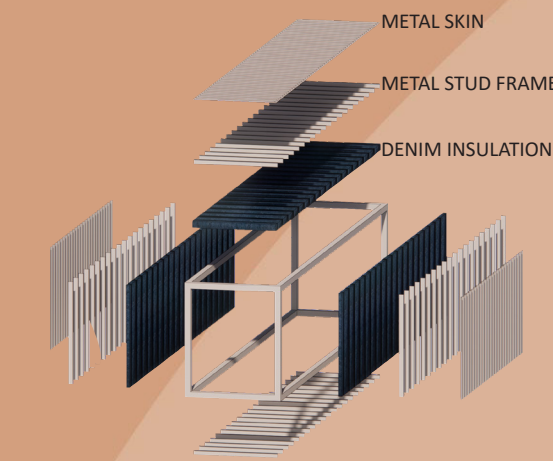
PLANNING PROCESS



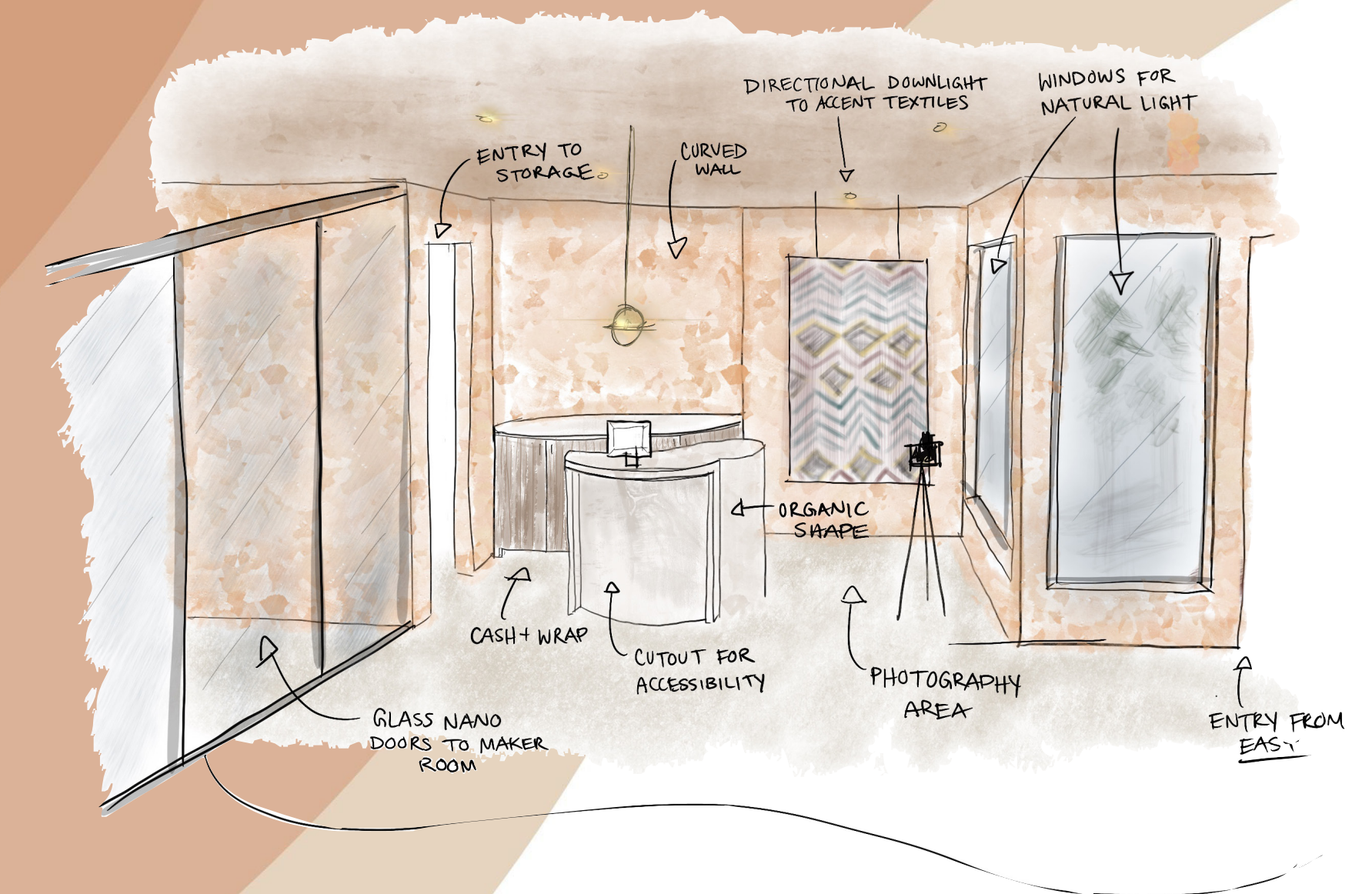
BASIC CONTAINER CONSTRUCTION

San Francisco is located in a zone 3 area which requires insulation to be at least an R-30 value in the ceiling and R-13 or R-19 in exterior wall (PCA, 2019).

Thus, the projected containers have 8" thick denim insulation (R-30) in the ceiling and 3-5/8" thick denim insulation (R-13) in the exterior wall.



CASH + WRAP & PHOTO AREA PERSPECTIVE SKETCH



ALL ENTRY DOORS ARE FACING EAST SO THE COUPLE CAN HAVE MORNING SUNLIGHT AS WELL AS GOOD BLESSING (NAVAJO PEOPLE)

NAVAJO TEXTILE INSPIRED PATTERN PAINTED ON THE METAL SKIN

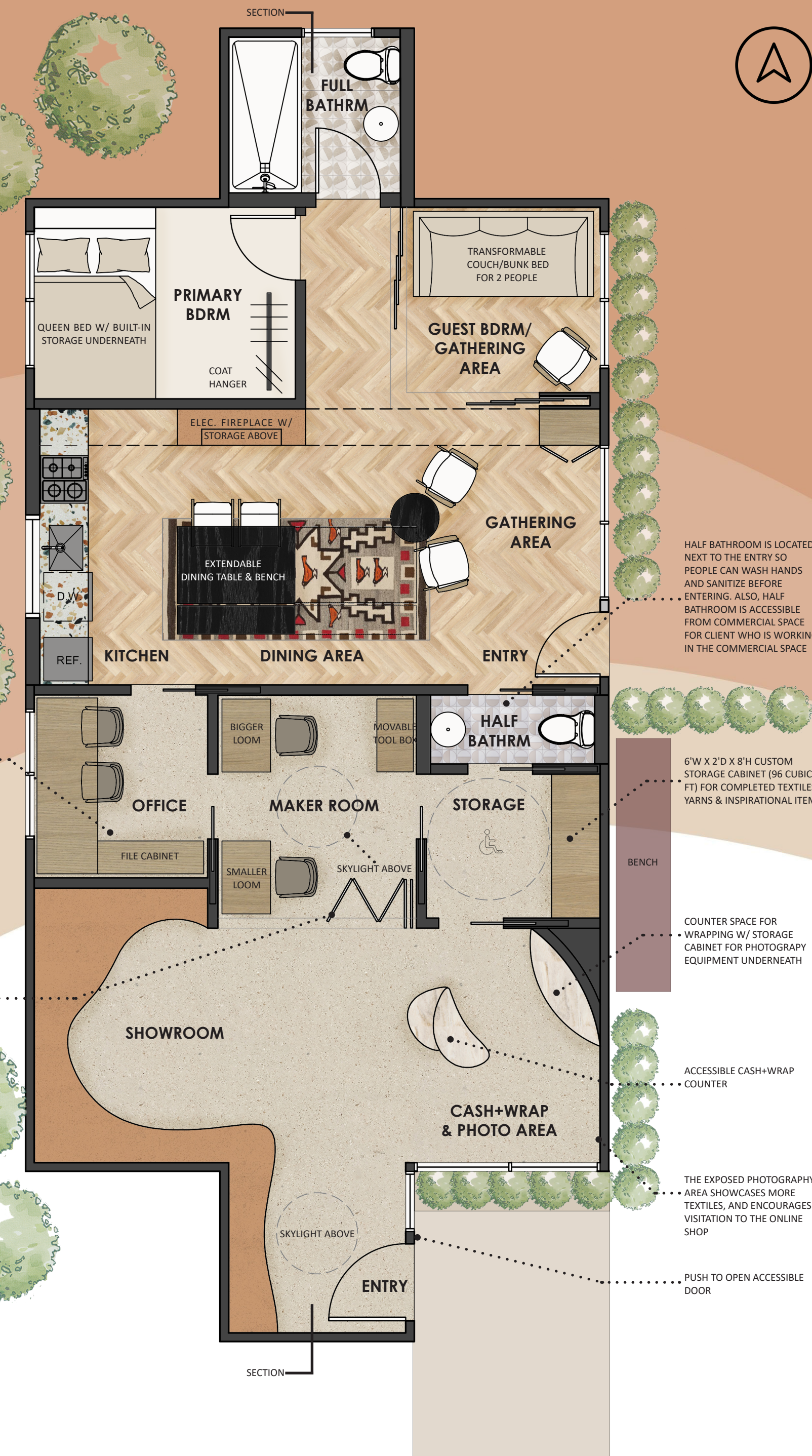
ENTRY TO THE RESIDENCE SPACE

HEDGE ADDED FOR PRIVACY FROM COMMERCIAL SPACE

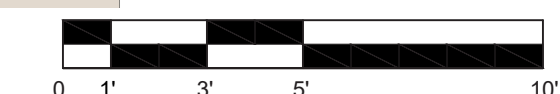
PROVIDING A PUBLIC SEATING AREA INVITES PEOPLE TO SIT AND SOCIALIZE



COMMERCIAL ENTRY FACADE PERSPECTIVE



FLOOR PLAN



ENTRY WITH BRIEF INFORMATIONAL HISTORY OF NAVAJO WEAVING, CULTURE, AND JOURNEY.

LARGE NAVAJO TEXTILES WITH SPOTLIGHT TO EMPHASIZE THE BEAUTY OF THE NAVAJO TEXTILES.

DISPLAY RACKS FOR SMALLER TEXTILES



COMMERCIAL SPACE PERSPECTIVE

WAYFINDING THROUGH THE USE OF COVE LIGHTING

FRAMELESS GLASS NANO DOORS ALLOW FOR DISPLAY OF WEAVING TO THE PUBLIC

ROMAN BLINDS W/ NAVAJO TEXTILE FOR THE WEAVER WHEN THEY WANT TO WORK PRIVATELY

CASH-WRAP COUNTER WITH ACCESSIBLE SPACE

COMMERCIAL SPACE

The layout of the space focuses on organic circulation from east to west in a clockwise manner, and places emphasis on harmonious versatility.

The grand entryway encourages a moment of stillness to acknowledge the historic and current culture of Navajo weaving. This act is similar to the intentional pause Navajo peoples take before entering Antelope canyon which allows them to frame their minds respectfully and thoughtfully.

The organic textile display emphasized with cove lighting then urges users through the space, towards the exposed maker room where they can experience the process of weaving first-hand. Upon reaching the north side of the building, users will enter the cash-wrap & photography area before leaving.



RESIDENTIAL DINING & GATHERING AREA PERSPECTIVE - CONDENSED AREAS FOR THE COUPLE AND SMALL GATHERING

PUSH TO OPEN STORAGE CABINET AT 7' A.F.F. FOR MISCELLANEOUS ITEMS

OPENABLE WINDOWS ON OPPOSITE SIDES MAXIMIZE CROSS VENTILATION

SEPERATE BUILT-IN COAT CLOSET FOR THE GUESTS PREVENTING CONTAMINANTS FROM OUTSIDE

STORAGE SPACES FOR FOLDING CHAIRS

SLIDING DOOR W/ TOP MOUNTED RAIL FOR GUEST BDRM PRIVACY



RESIDENTIAL ENTRY FACADE PERSPECTIVE

BRIEF HISTORY OF NAVAJO WEAVING

In Navajo legends, Spider-woman taught the Dine, the skill of weaving, anthropologists believe that the Pueblo Indigenous tribe helped teach the craft of weaving to the Navajo. This formed a kinship between both Indigenous communities. The Dine is the most well-known Indigenous group in the southwest for their beautifully crafted textiles. They have crafted their textiles into rugs, skirts, and blankets, each made with a spirit line to embody humility, which is important in the Navajo culture (Navajo People, 2021). In crafting textiles, the Dine must have *hozho* to create beautiful textiles that reflect beauty and harmony. This principle of life is important, and if they are missing pieces or have an imbalance of *hozho*, a ceremony is needed to re-obtain it (IU Musuem, 2021).

THE RISE OF INDIGENOUS ART AND RECOGNITION

The growing interest in Indigenous art in the mainstream market shows hope for many Indigenous artists in regards to having their work celebrated and properly compensated for when put on the market. However, the journey to achieving proper recognition and fair pay is far from over. Kinship strives to educate people from all walks of life, of the significance art has in keeping Indigenous cultures alive. We hope this awareness will encourage them to support local Indigenous artists in ways such as; purchasing their art at fair market value, as well as simply understanding and celebrating the culture behind Indigenous art (Artdex, 2020).

FLEX SPACES

The connection of the powder room to the storage area makes for a flexible space either for residential or commercial use. The powder room offers employees a space to wash hands. While in the residential space, the powder room can be used by guests.

Similarly, the office can be used for couples' personal and professional use. Both flex areas can be used while in retail or online mode, but are separated from the public spaces to aid in health precautions.

The maker room is a third flex area that is also closed off from the public when the weaver wants to work privately in a quiet environment. However, its frameless glass nano doors allow the public to peer inside and witness the making of textiles first hand.

Also, when in online mode the glass doors can be opened, allowing for additional ease of access and extra

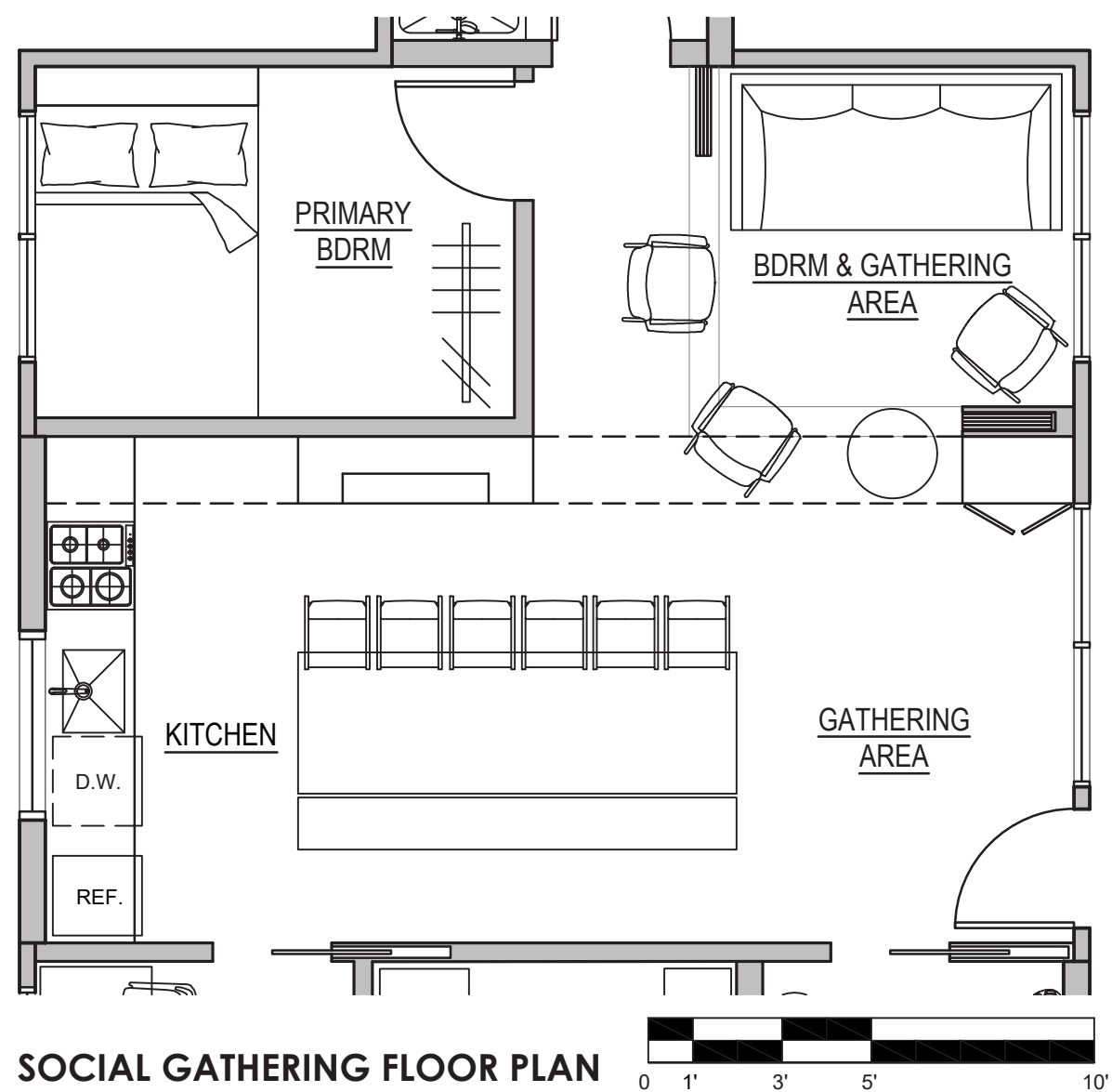
DINING & SOCIAL GATHERING AREA PERSPECTIVE SKETCH



RESIDENTIAL DINING & GATHERING AREA PERSPECTIVE - EXTENDED DINING FOR 12 & GUEST BDRM TO SOCIAL GATHERING AREA

TWO ARROW SHAPED PENDANTS CROSSING EACH OTHER REPRESENTING NAVAJO SYMBOL OF FRIENDSHIP

EXTENDABLE DINING TABLE & BENCH ALLOWS 12 PEOPLE TO DINE TOGETHER.



RESIDENTIAL SPACE

The residential space focuses on adaptable gathering, and the opportunity to connect safely in numerous ways. The space allows two groups to socialize at the same time: located at the dining area and the guest bedroom area. An extendable dining table acts as an eating area for the couple when condensed, and 12 when fully extended. To its east, an open gathering area with lounge chairs act as a casual conversational area for the couple. Adjacent to this area is a multi-functional guest room. When its sliding wood doors are closed, it can be used as a private bedroom for two guests. Opening up the doors creates a larger gathering area, and the transformable sofa bed and lounge chairs create more lounging opportunities. The powder room beside the entrance allows guests to wash their hands upon entry and before eating.



SECTION THROUGH SHOWROOM, MAKER ROOM, KITCHEN, PRIMARY BEDROOM, AND FULL BATHROOM

MATERIAL RATIONALE

Harnessing the goodness and wellness of natural and sustainable materials, both the retail and residential spaces utilize materials such as cork and American clay to create decorative and focal elements that reflect the organic properties of the Antelope Canyon. Additionally, Raffia is wrapped around the residential millwork creating a space rich in texture. Pairing these elements with ornate Navajo textiles for drapery, captures the essence of Hozho: beauty, balance, and harmony.

HEALTH AND SAFETY RATIONALE

The materials that have been specified for Kinship are not only sustainable, but have been chosen with health and safety in mind. Entry and interior doors and cabinet handles will be specified with copper. Copper is known for its antimicrobial properties, which makes it harder for viruses and bacteria to cling to.

The space planning of Kinship also offers a person working in commercial area, a place to wash their hands through a jack and jill half-bathroom that is accessible from the storage area. The retail circulation path offers physical distancing from customers. Openable windows are installed on the east and west side (opposite to each other) of the residential area. This natural ventilation method (Cross-Ventilation) brings air through a home, allowing the building to ventilate and cool down without using energy.

- AMERICAN CLAY**
Commercial and Residential Feature Walls
American Clay is used through Kinship as it resembles the texture and color of the Antelope Canyon. American Clay is a sustainable clay plaster that is non-toxic and does not harm the air quality of the space and helps to maintain humidity which prevents mold and fungal growth.
- CORK**
Commercial Area Ceiling
The cork ceiling is both functional and decorative at the same time. Cork inherently has sound absorption properties, which will then help buffer and absorb sound.
- LINOLEUM**
Commercial Area Flooring
The flooring in the commercial area is linoleum as it is harvested from a rapidly renewable and biodegradable material. Linoleum has natural bacteria-killing properties.
- RAFFIA**
Residential Area Millwork
Raffia is 100% natural material and biodegradable from raffia palm. It is wrapped around the residential millwork frame to add rich texture to the space. The Dine are also skilled basket weavers so incorporating this material evokes the feeling and texture of their beautifully crafted baskets.
- ACOUSTIC WOOD WOOL PANEL**
Residential Feature Wall
The wood wool panel is a mixture of wood fibre, cement, and water. It is 100% natural material and is a great sound absorbent. Wood wool panels were installed between the residential area and commercial area to prevent noise from the commercial area.
- CORK**
Residential Flooring
Cork flooring that looks like wood inherently has great thermal and acoustical properties. Easy to clean and maintain as it does not accumulate dust. It is inherently resistant to mold and mildew as well.

REFERENCES

Artdex. (2020, June 3). Native American art, finally happening. ARTDEX. Retrieved November 12, 2021 from <https://www.artdex.com/native-american-art-finally-happening-2/>.

ADA. (n.d.). Retrieved November 18, 2021, from <https://universaldesign.ie/what-is-universal-design/the-7-principles/>.

Emmett, B., & N. (2019, July 11). What are the options for insulating a home. PCA Inspectors. Retrieved November 13, 2021, from <https://www.pcainspect.com/insulation-options-for-home/>.

Bay Area Equity Atlas. (2021). Indigenous populations in the Bay Area | Bay Area Equity Atlas. Retrieved November 12, 2021, from <https://bayareaequityatlas.org/about/indigenous-populations-in-the-bay-area>.

Brigham Young University Museum of Art. (2003). Hózhó and Navajo basketry- arts, Crafts & Trades-Legends. Twirocks. Retrieved November 12, 2021, from <https://twirocks.com/legends/arts-crafts-trades/hozho-and-navajo-basketry.html>.

Canyon, A. (2019, October 24). What Antelope Canyon means to the Navajo people. Navajo Tours. Retrieved November 12, 2021, from <https://navajotours.com/blog/what-antelope-canyon-means-to-the-navajo-people/>.

International Friendship House. (1955). Our vision and mission. Intertribal Friendship House. Retrieved November 12, 2021, from <https://www.ifhurbanrez.org/our-mission>.

IU Museum. (2021). Balance and beauty in Navajo worldview. Omeka RSS. Retrieved November 12, 2021, from http://lib.indiana.edu/omeka/mathers/exhibits/show/navajo_weavings/balance-beauty.

Kinship: Sociology. Tutor2u. (2021, November 12). Retrieved November 12, 2021, from <https://www.tutor2u.net/sociology/topics/kinship>.

Navajo People. (2021). Navajo Rugs. Navajo Rugs. Retrieved November 12, 2021, from <https://navajopeople.org/navajo-rugs.htm>.

Navajo People. (n.d.). Retrieved November 14, 2021, from <http://navajopeople.org/blog/navajo-homes-hogans/>.

Urban Relocation, A. I. (n.d.). American Indian Urban Relocation. National Archives and Records Administration. Retrieved November 12, 2021, from <https://www.archives.gov/education/lessons/indian-relocation.html>.

Jill, A. Y. (2012). Situated flow: A few thoughts on reweaving meaning in the navajo spirit pathway. Museum Anthropology Review, 6(1), 23-37. Retrieved from <https://www.proquest.com/scholarly-journals/situated-flow-few-thoughts-on-reweaving-meaning/docview/238784199/se-2>