

k'e

artisan
navajo
textiles

The Navajo word, **k'e**, refers to affective action and solidarity, including such concepts as love, compassion, kindness, friendliness, generosity, and peacefulness (Carey, 2013). It encompasses all the **connections** and relationships we have with one another, both within our families or "clans" and also our communities. This design aims to introduce the concept of k'e into the space through demonstrating connections, **intimacy**, and incorporating elements of the **Navajo culture** to remind people of their roots. The spatial layout embraces the importance of indoor and outdoor connectivity. The site is a refurbished brownfield and in a walkable location.

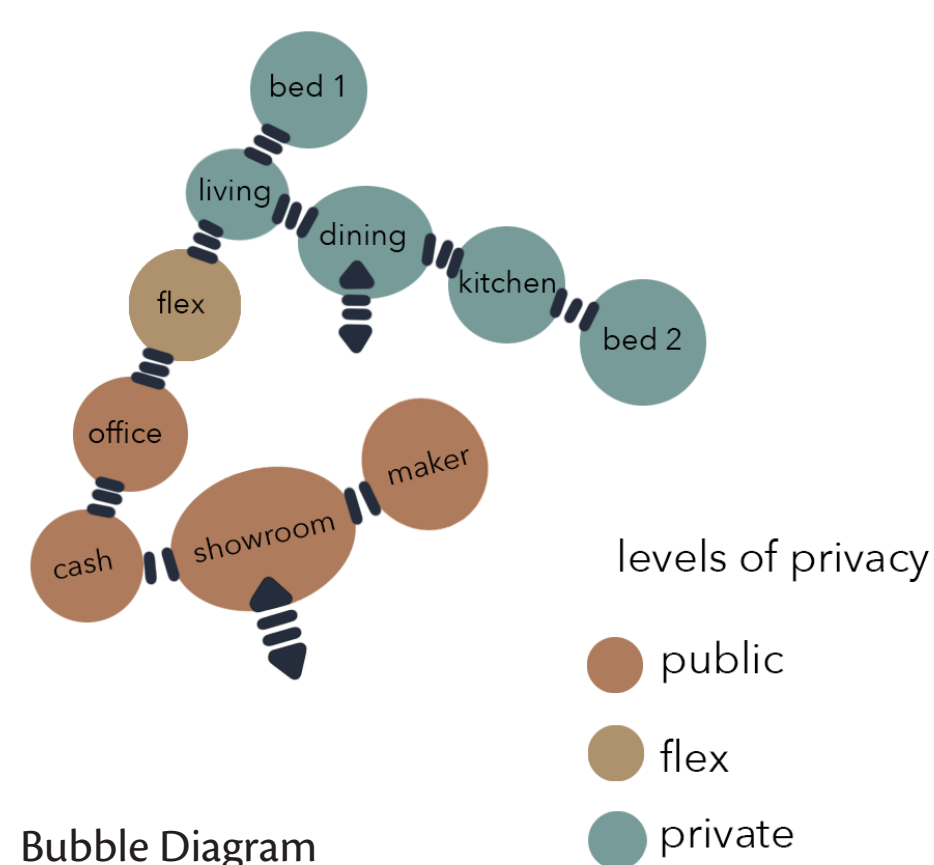


Exterior Perspective

The Site

10455 E Colfax Ave Aurora, CO

The site is on a cleaned **brownfield** where a dispensary building used to be located. It is in an OA-G zone, promoting an urban, **mixed-used** environment including both retail and residential buildings. As an **infill site**, it is connected to community, amenities, and public infrastructure, as well as meeting **LEED-ND** criteria. This location is **sustainable** and easy to access with a walk score of 86, close proximity to **transportation**, shops, and parks. A bus stop is across the street, with grocery stores and restaurants in **walking** distance. Aurora is also a highly populated city, with multiple neighboring communities surrounding the location. (Aurora Gov, 2021)



Parti

The structure is composed of three shipping containers, two of them 40 feet long, and the other 54 feet. We used parti diagrams to explore different layouts, and decided to **offset** and **rotate** the retail portion of the building to create a **work/life separation** and to draw customers in from both sides of the building. **One-way circulation** through the retail space promotes precautionary health measures. **Strategic landscaping** is used to further draw users into the space from the outside.



Retail Space Perspective



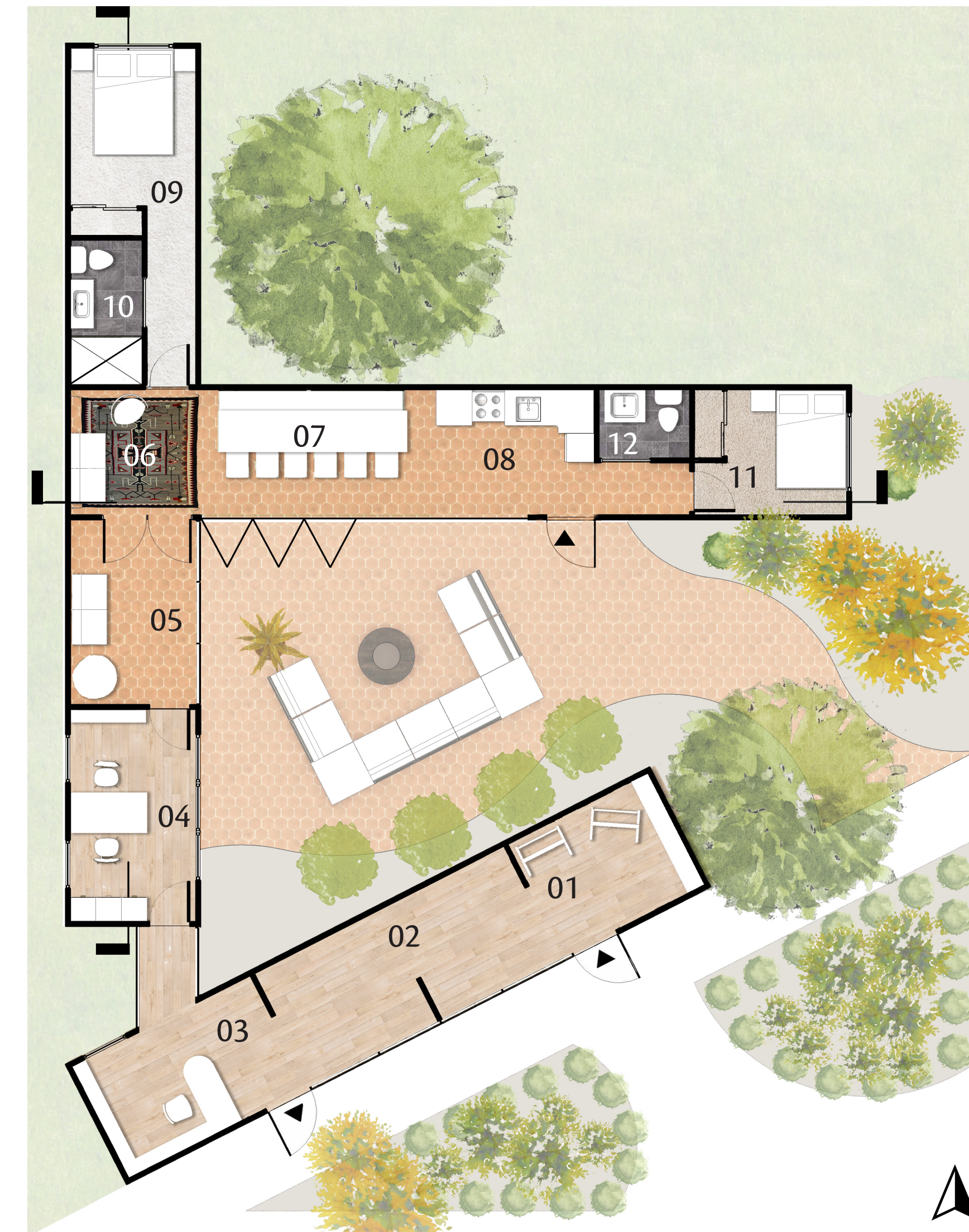
Research

Navajo Culture

The Navajo is the **largest Native American tribe in the U.S.** today with the Navajo Nation territory expanding across 24,000 square miles between the four sacred mountains in NM, AZ and UT (Birchfield, 2006). The traditional Navajo society is **matriarchal** with property and resources owned by the women (IHS). The word Navajo comes from a Tewa word referring to "planted fields" and the Navajos name for themselves is **Diné** meaning "the people". Ceremonies and gatherings play an integral role in their society, with the hataali, medicine man, and traditional medicine practices being a way of life even in modern times. **Hogans** were the traditional home for the Navajo people. They were hexagonal / octagonal in shape and constructed with log / stick framework and plastered with mud. Hogans typically were built with the entrance facing the east to greet the morning sun and feature a connection between the surfaces of the dwelling with the nature around them (Giese, 1997).

Shipping Containers

Unused shipping containers are accumulating in shipyards and warehouses, millions sit stagnant around the world because the cost of shipping them back empty for reuse is often higher than producing new ones (Ribeiro, 2019). Repurposing the containers is not only **sustainable** and **economical** but also provides a good form of **protection** for artists' work, as they are mold, termite, and fire resistant and the materials are **durable** and require little maintenance (Truman, 2016).

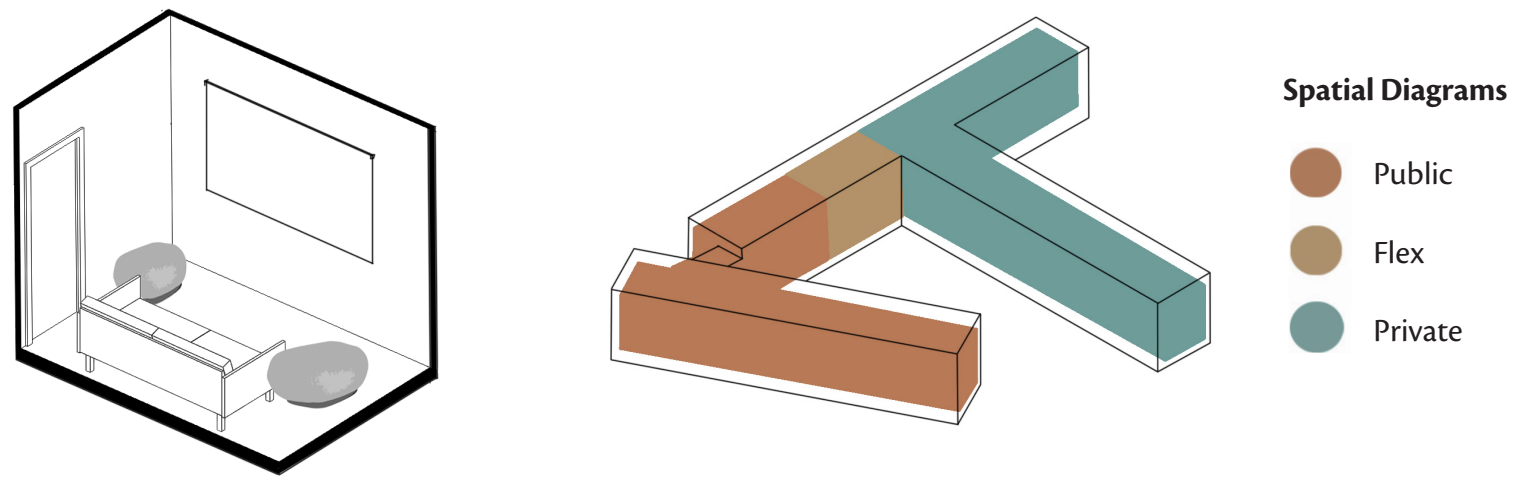


Floor Plan
Scale: 3/16" = 1'

- | | | |
|-------------------|-----------------|----------------------|
| 01. Maker's Space | 05. Flex Space | 09. Primary Bedroom |
| 02. Showroom | 06. Living Room | 10. Primary Bathroom |
| 03. Cash Wrap | 07. Dining Room | 11. Guest Bedroom |
| 04. Office | 08. Kitchen | 12. Guest Bathroom |



Maker's Space Perspective

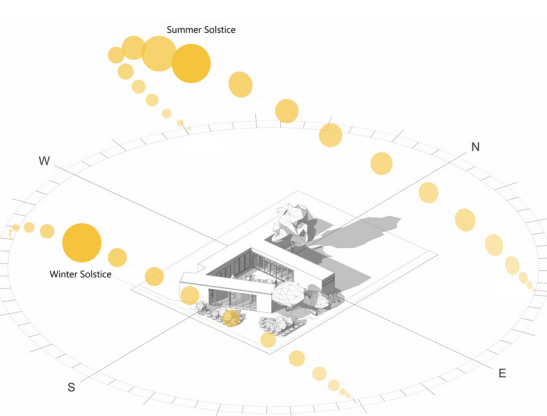


Flex Space

The flex space provides a functional **transition** between private and public spaces. It can easily switch between a **photography room** for commercial use and a **movie room** for residential use. French doors can be closed to create privacy, or opened to extend the living room and allow for **social distancing** during larger gatherings.

Sun Patterns

Sun patterns traditionally dictate movement throughout **hogans**, or traditional Navajo dwellings, guiding the movement from **east to west**. The path of travel through the retail space emulates this same pattern. **South-facing windows** also maximize sunlight in both the retail and residential spaces.



Indoor - Outdoor Living

Connection with nature is an integral part of Navajo culture. Folding glass doors create a **fluid threshold** between the interior and exterior living spaces. This element also allows for larger gatherings, greater air flow, and natural lighting to open up the narrow space. **For a 360 view of these perspectives, scan the QR code.**



Dining Perspective - Day

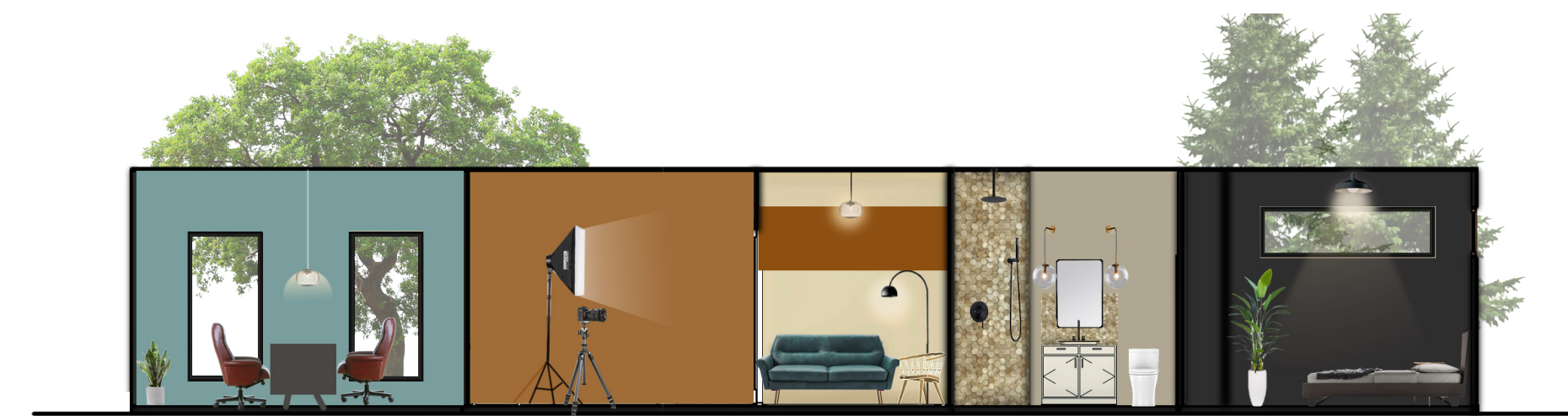


Dining Perspective - Night



Color Scheme

The color scheme is drawn from four cultural Navajo colors and the desert landscape. The four colors portray the mountains in each cardinal direction; **black** represents Northern nights, **white** displays dawn in the East, **blue** alludes to the day in South, and **yellow** illustrates Western dusk. Secondary colors were drawn from elements important to the client and their culture. The residential side of the space implements these cardinal colors, with the primary bedroom black, the guest bedroom white, the primary bath and flex space yellow, and the office blue. The kitchen, dining, and living room, as well as the retail space, encompasses all four colors to create a cohesive space.



West Section: 3/16" = 1'



North Section: 3/16" = 1'



Kitchen Perspective

Sources

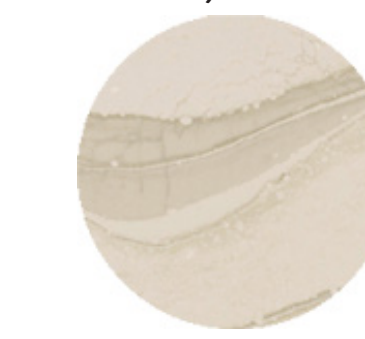
- NETR Online, Accessed Oct 2021 <https://environment.netronline.com/state/CO/county/arapahoe/acres/>
- Riberto, Suelen, Shipping Containers – A Growing Trend for Green Buildings, 2019 <https://www.rategreen.com/green-building-articles/shipping-containers-a-new-trend-for-green-buildings/124>
- Slater, Sam, The Impact of Community in Navajo Life, 2016 <https://www.stopbullying.gov/blog/2016/10/25/impact-community-navajo-life>
- Truman, Curt, GREEN BUILDINGS: How to Start A Shipping Container Building Project, 2016 https://www.researchgate.net/publication/315196750_GREEN_BUILDINGS_How_to_Start_A_Shipping_Container_Building_Project

- Discover Navajo, History, 2011 <https://www.navajo-nsn.gov/history.htm>
- Discover Navajo, Navajo Arts, Accessed Oct 2021 <https://www.discovernavajo.com/experience-the-navajo-nation/navajo-arts/>
- Giese, Paula, HOGAN: Diné (Navajo) Traditional House, 1997, <http://www.kstrom.net/isk/maps/houses/hogan.html>
- IHS (Indian Health Service), Navajo Nation, Accessed Nov 2021, [https://www.ihs.gov/navajo/navajonation/LEED v4 -ND, 2018](https://www.ihs.gov/navajo/navajonation/LEED%20v4-ND,2018)
- Navajo Rug, Accessed Nov 2021, <https://www.navajorug.com>

- Aurora Gov, Original Aurora Zone District Guide, Accessed Oct 2021 https://p1cdn-static.civiclive.com/UserFiles/Servers/Server_1881137/File/Business%20Services/Planning/Zoning%20District%20Interim%20and%20Use%20Packet.pdf
- Birchfield, D.L., Navajos, 2006, <https://www.everyculture.com/multi/Le-Pa/Navajos.html>
- Carey, Harold, Jr, K'É – Diné (Navajo) Kinship System, 2013 <https://navajopeople.org/blog/ke-dine-navajo-kinship-system/>
- Carey, Harold, Jr, The Navajo Four Sacred Colors, 2015 <https://navajopeople.org/blog/the-navajo-four-sacred-colors/>



Crackled Ceramic Wall Tile by Tile Bar



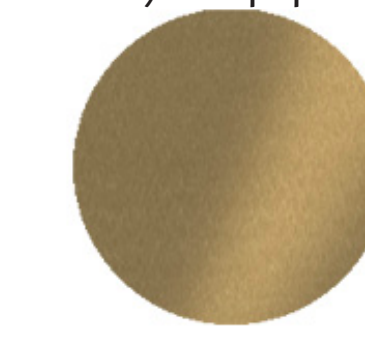
Quartz Countertops



Makoto Hexagon Umi Teracotta Tile



Intersections Wallpaper by Tempaper



Brass

Materiality

Clay tile is used in the residential side for its heating qualities and sustainability. The large south facing windows allow an abundance of sunlight to wash over the tiles, contributing to **passive heating** and creating warmth in the space.

Quartz countertops were chosen for both the residential and retail space for its **durability** and **antimicrobial** qualities.

Deciduous **trees** are strategically placed to provide shade in the summer, while allowing sunlight to filter in during the winter. The **wool carpet** in the bedrooms is a natural and sustainable material that adds to the warmth of the space.



Primary Bedroom Elevation