



John Basilone Memorial Veteran Living Community



BRANDING

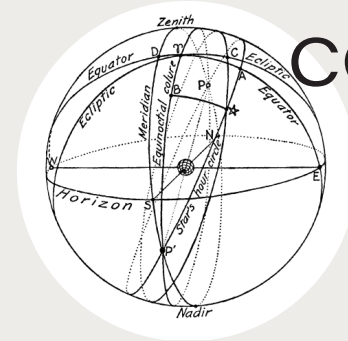
Gunnery Sergeant John Basilone (1916-1945) was awarded the **Medal of Honor** for his extraordinary heroism in combat at Guadalcanal during World War II. He received a hero's welcome upon return to America, but he **requested to return to combat**. On February 19, 1945, Basilone was **killed in action** leading an assault off the beaches of Iwo Jima. He was posthumously awarded the **Navy Cross** and is, to this day, the only enlisted Marine to be honored with both the Navy Cross and the Medal of Honor.



LOCATION AND DEMOGRAPHICS

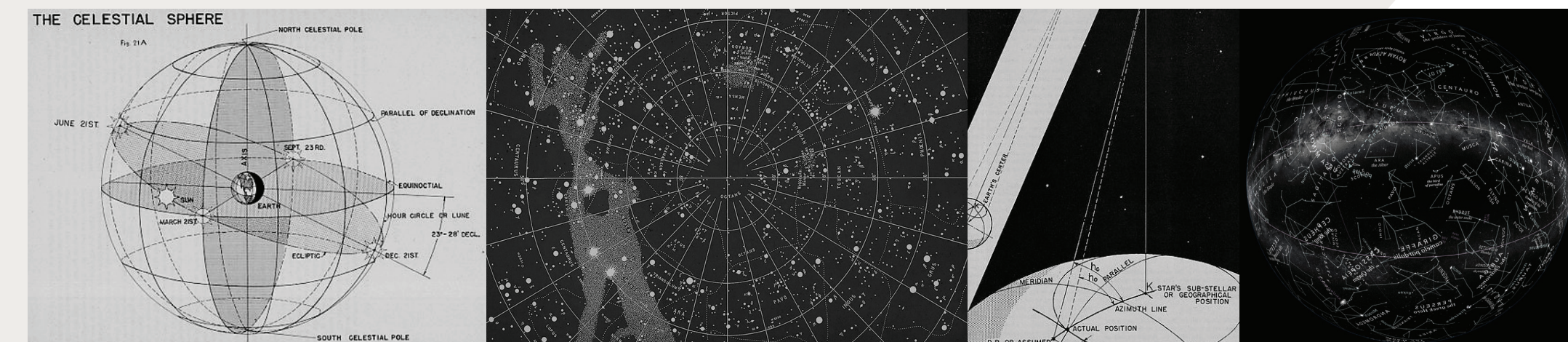
The Living Community is located in **Raritan, New Jersey**, hometown of John Basilone. Raritan has a small **population of 7,875**. The town's small size and **abundance of nature** gives veterans a peaceful place to transition back into civilian life.

Given its central location, the Living Community is able to **serve all of Northern New Jersey**. The living community primarily houses **young combat veterans** ranging in age from 21 to 30. Although families are not allowed to live with the veterans as they are transitioning back into civilian life, they are allowed to visit all days of the week.



CONCEPT

For thousands of years, travelers and navigators used **celestial navigation** when all else failed. Looking to the sky helped them understand their place on Earth and how to get home. John Basilone Memorial Veteran Living Community seeks to do this as well and help veterans **transition from military to civilian life**. By taking **shape inspiration from almanac diagrams and constellations** and focusing the **details on the ceiling** to draw the eye upward, the Living Community creates a comfortable environment for veterans to grow and **navigate their way from one world to another**.



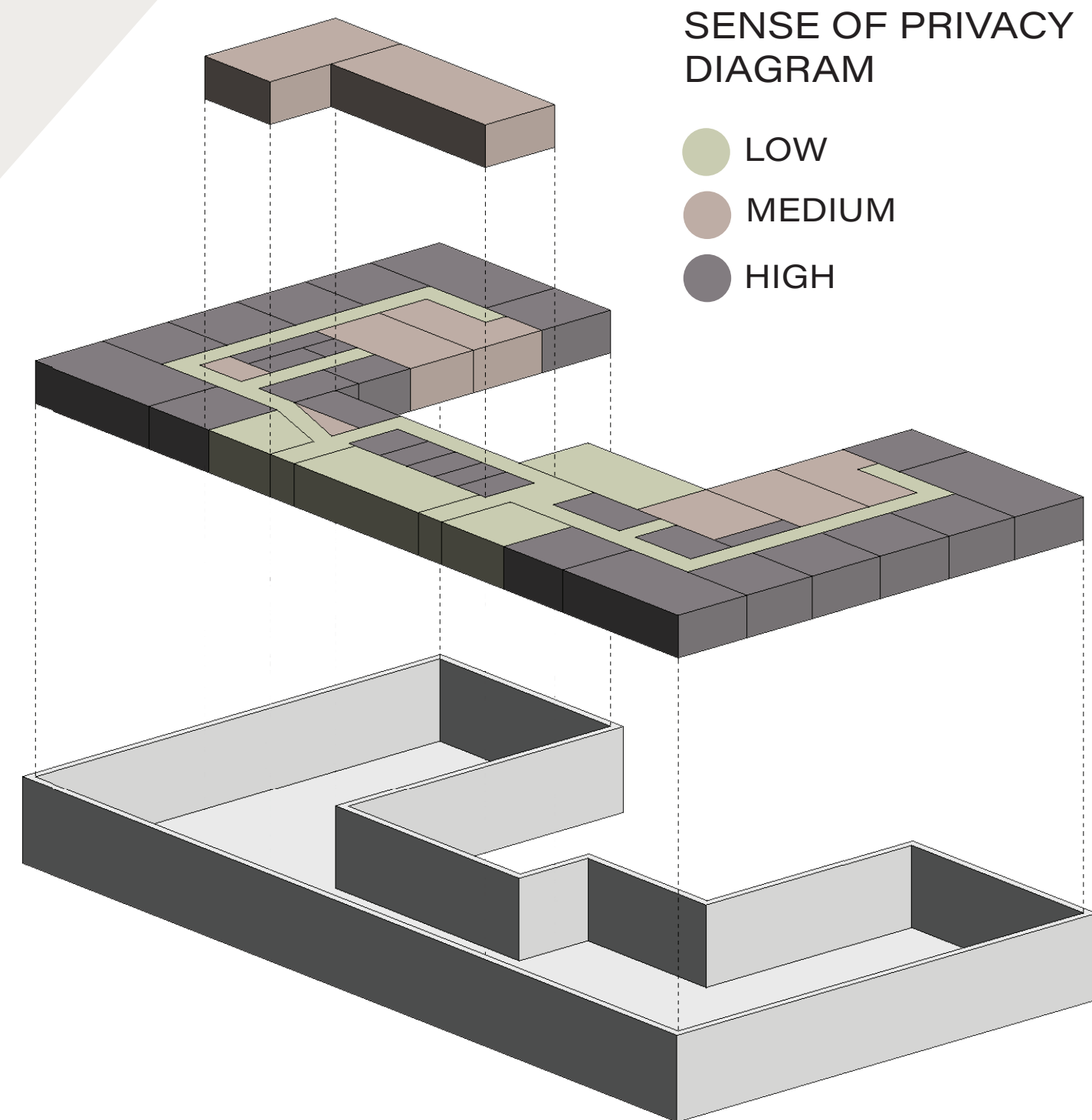
RESEARCH SUMMARY

Social Sustainability: Social sustainability combines the design of the physical realm with the design of the social world - infrastructure to support social and cultural life, social amenities, systems for citizen engagement and space for people and places to evolve. Community identity is often defined by housing type and style.

Covid-19: Lighting Fixtures with disinfection technology should be used in high-acuity spaces. Fixture current's disinfection capabilities are safe for human use and kill up to 99.7 percent of common surface pathogens over an eight-hour period. Paint Shield/Registered Anti-Microbial Paint kills 99.9 percent of Staph, MRSA, E. coli, VRE, and Enterobacter aerogenes within two hours of exposure on painted surfaces and continues fighting for up to four years post application.

Mental Health: Feelings of being disconnected are commonly expressed by returning veterans. The military provides daily purpose and structure, as well as a sense of belonging and support among peers. When re-entering civilian life, veterans often lose these anchors, and consequently, can have difficulty fitting back into family and community life. PTSD has many triggers: footsteps reverberating on hard floors, large crowds, closed in spaces, and not being able to find the exits.

Design Requirements of the VA: Warm lighting should be used. Neutral tones, such as those often used in residential design, should be used. Spaces within the building which create excessive noise should be separated from the lobby and reception areas by distance and/or soundproof barriers.



SENSE OF PRIVACY DIAGRAM

- LOW
- MEDIUM
- HIGH



LEGEND:

FLOORPLAN ANNOTATIONS

1. The offices are located near the entrance to prevent high levels of circulation around the resident corridors. Their location across from the windows allows light to enter into the rooms.
2. The entrance to the kitchen and dining is centrally located to provide equal access for residents on both wings.
3. A NanaWall folding glass wall is used along the large multipurpose spaces. This 1) allows more light to enter the rooms and 2) allows the rooms to be opened up for bigger events.
4. The computer room can be used for either personal use or to teach residents technological skills that can be used in the workforce.
5. The restrooms are located near the entrance to promote wayfinding.
6. Doors are placed so as to create groupings of residents and give every resident a "neighbor." This creates comradery between the residents and makes wayfinding simpler.
7. Long-use workout equipment, such as treadmills and stationary bikes, are located facing the windows to provide users with views of the exterior and keep them entertained.
8. The gyms are surrounded by curtain walls. This allows the veterans to have better situational awareness.
9. The janitor's and storage closet's entrances are located along smaller corridors, preventing pedestrians along the main corridor from having to view them.
10. Although another NanaWall is used along the flex space, a retractable shade is used to give the room privacy when group counseling sessions are occurring.

N
RENDERED FLOORPLAN: LEVEL 1
SCALE: 3/32" = 1'-0"



RENDERED FLOORPLAN: MEZZANINE
SCALE: 3/32" = 1'-0"



DINING AREA PERSPECTIVE

SUPPORTING CONCEPT:

- **Ceiling Design**
 - Angular beams draw inspiration from diagrams that demonstrate how navigators determine their position by lining up the equator, themselves, and a particular star. This also draws the eye to the ceiling, referencing the idea of looking to the stars for answers.
- **Shape and Form**
 - Angular lines and circles can also be seen in the banquet tables.
 - The lighting fixtures, with their semi-spherical shape, mimic the shape of the Earth.
- **Lighting**
 - The closer a star is to us, the brighter it is. Brighter lighting is used in this space, as well as other highly social spaces, to signal the privacy level of the room.

SUPPORTING RESEARCH:

- **Social Sustainability**
 - The coffee bar, along with the fireplace, are areas where residents can stop and chat with each other.
 - The television above the fireplace allows the room to also be used for watch parties for sports and TV shows, providing another way for residents to socialize and connect.
- **Mental Health**
 - Creating a space that encourages social interaction is important for mental health: 26% of those dissatisfied with their social life are frequently lonely, compared with just 5% of those who are satisfied with their social life.
- **COVID-19**
 - The flooring is a hygienic nonporous bio-polyurethane.



Countertop Surface



Chair Fabric

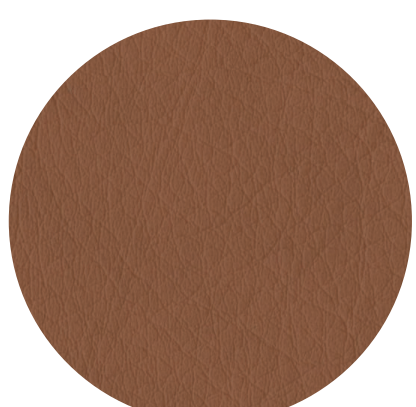
“
I don't even have friends anymore to be honest, because I can't speak to [civilians] anymore...I don't connect with them anymore...the only really group I have is veterans, and that's probably it, I can't speak to anyone out there...and it's difficult.
- Post-9/11 Veteran
”

SUPPORTING CONCEPT:

- **Ceiling Design**
 - A coffered ceiling is used to mimic the grid lines of the celestial sphere.
 - Acoustical ballasts are used below the dropped ceiling to denote a more quiet and private lounge space where residents can read or quietly chat.
- **Shape and Form**
 - The sofas feature obtuse angles that mimic those of constellations.

SUPPORTING RESEARCH:

- **Social sustainability**
 - Just like with the dining area, the lounge area seeks to promote socialization. It's location along the middle of the private resident corridor, makes it accessible to all.
 - The television, along with an Xbox and Play-station, provides another way for residents to socialize and bond.



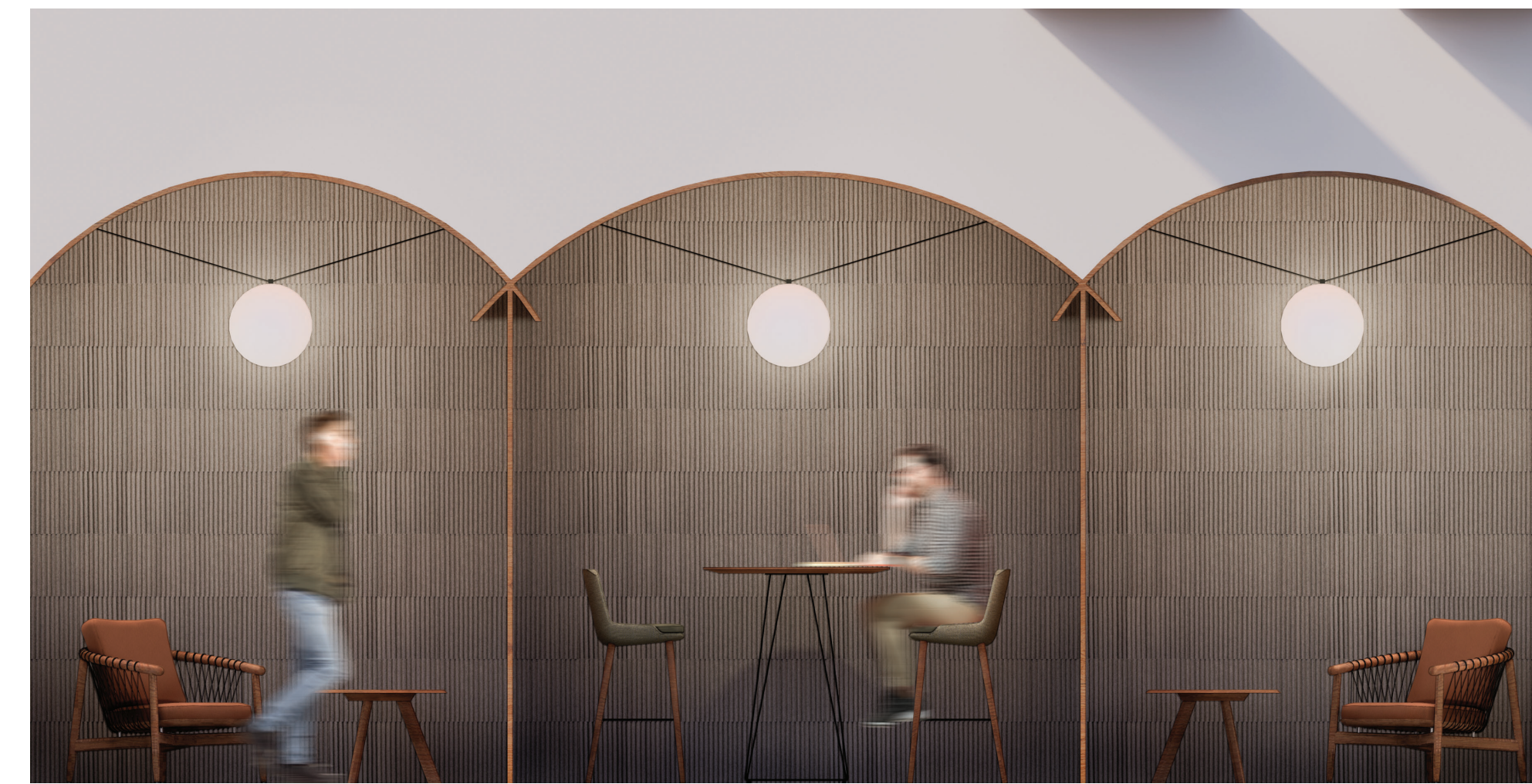
Rolling Bench Fabric



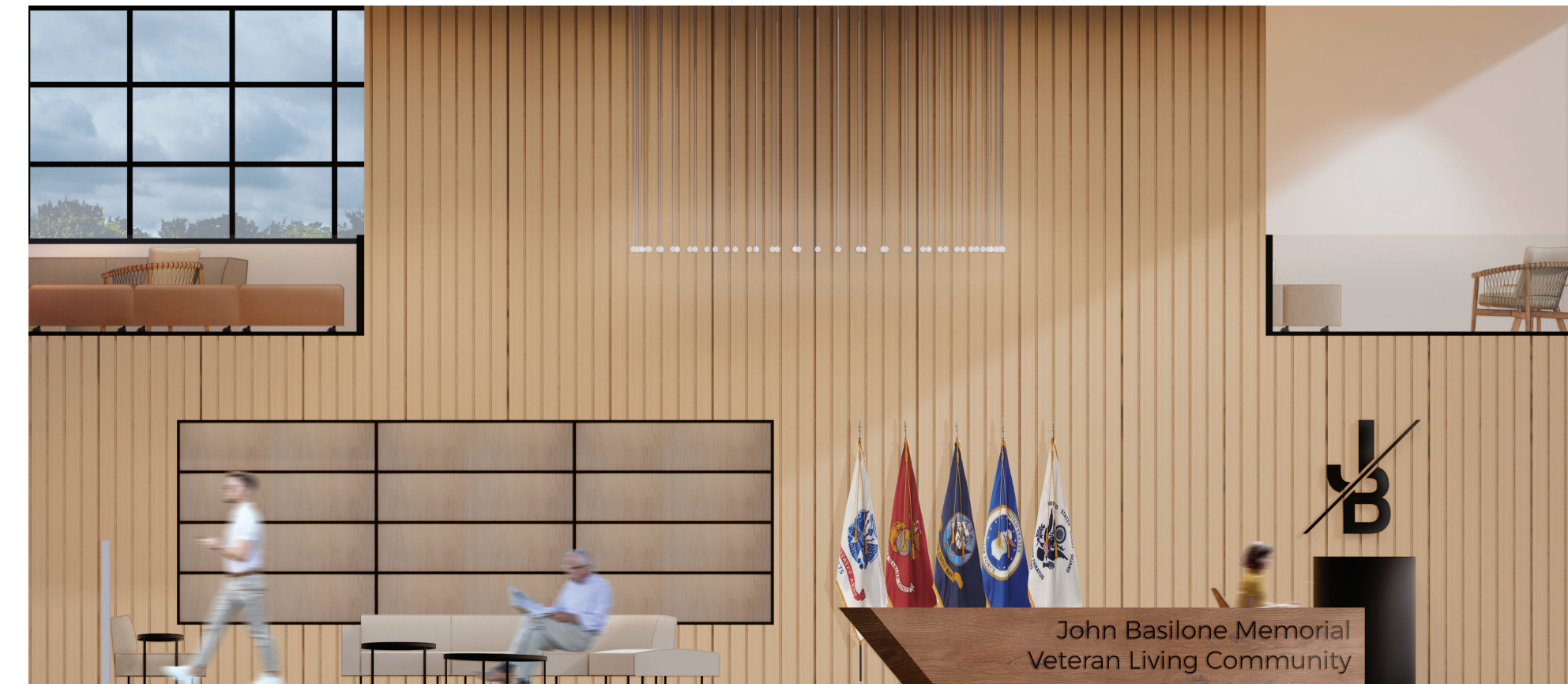
Rolling Ottoman Fabric



LARGE LOUNGE (WEST WING) PERSPECTIVE



SOLO/DUO LOUNGE (EAST WING) ELEVATION (NTS)



RECEPTION ELEVATION (NTS)



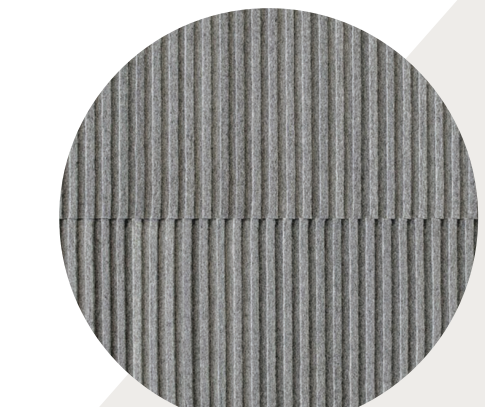
CORRIDOR (EAST WING) PERSPECTIVE

SUPPORTING CONCEPT:

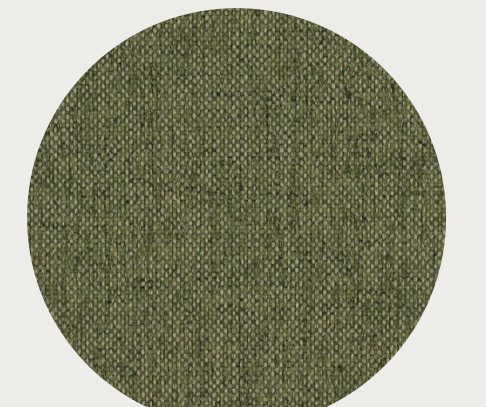
- **Shape and Form**
 - The crossing arches are used to mimic almanac drawings while also creating a greater sense of privacy.
- **Color**
 - Throughout the living community, warm tones are used in conjunction with cool tones to represent both the stars and the dark sky.

SUPPORTING RESEARCH:

- **Privacy**
 - A felt wall covering is used to promote acoustical privacy.
- **Colors**
 - Green accents are used throughout the space because of the color's association with growth, renewal, and peace.



Wall Covering



Stool Fabric

SUPPORTING CONCEPT:

- **Ceiling**
 - The lighting installation mimics constellations and draws the eye upward.

SUPPORTING RESEARCH:

- **VA Design Requirements**
 - Most waiting seating faces the windows and a 52" wall is located behind the sofa along the main corridor. This gives veterans better situational awareness.
 - The lighting installation and shadow boxes provide "positive attractions" as suggested to use in the VA Healing Environments Guidelines.

“
I like an open space area. If it's cluttered with furniture then I'm not comfortable. And it's probably something (one of the only things) that I can relate to. We lived cramped for so long that I like open areas.
- Veteran
”

SUPPORTING CONCEPT:

- **Ceiling**
 - Skylights and an exposed ceiling are used to draw the eye upward.
 - Wayfinding mimics the circle and line forms of constellations.

SUPPORTING RESEARCH:

- **VA Design Requirements**
 - Signage is clearly and logically marked to promote wayfinding.
 - Contrasting color values are used for their positive effect on POLY trauma patients.

References

Belanger, Y. (2020, April 13). Healthcare after COVID-19: Smart design solutions for clinical spaces. Retrieved August 21, 2020, from <https://www.nelsonworldwide.com/healthcare-after-covid-19-smart-design-solutions-for-clinical-spaces/>

Bialik, K. (2020, May 30). Americans unhappy with family, social or financial life are more Kintzle, S., Keeling, M., Xintarianos, E., Taylor-Diggs, K., Munch, C., Hassan, A. M., & Castro, C. A. (2015). *Exploring the Economic and Employment Challenges Facing U.S. Veterans: A Qualitative Study of Volunteers of America Service Providers and Veteran Clients*. Volunteers of America.

Home. (2018, October 05). Retrieved August 29, 2020, from <https://www.raritanboro.org>

Khande, K. (2018). *Investigating Architectural and Space Design Considerations for Post Traumatic Stress Disorder (PTSD) Patients*. College Station, Texas: Texas A & M University.

Wertsch, M. (Ed.). (2016). *Healing Environment Design Guidelines* (United States, Veterans Affairs, Construction and Facilities Management).

Woodcraft, S. (2012). *Design for Social Sustainability: A Framework for Creating Thriving New Communities*. London, England: Social Life.

World War II Medal of Honor Recipients: John Basilone. (n.d.). Retrieved September 14, 2020, from <https://www.arlingtoncemetery.mil/Explore/Notable-Graves/Medal-of-Honor-Recipients/World-War-II-MoH-recipients/John-Basilone>