

IDEC



CELEBRATING THE PAST
SHAPING THE FUTURE



Interior
Design
Educators
Council

2011-2012
Annual Report

IDEC's Mission, Core Values & Vision



Mission

The mission of The Interior Design Educators Council, Inc. is the advancement of interior design education, scholarship, and service.

Core Values

- We believe in the value of an accredited, formalized interior design education.
- We believe the preparation of an interior designer includes learning through formalized education, scholarship, and service.
- We believe the foundation of interior design education is grounded in ethics and encompasses environmental, cultural, social, and global issues.
- We believe in an open dialogue and collaboration among colleagues.
- We believe a successful interior design education depends upon the participation of diverse groups of people.

Vision

IDEC will be recognized as the leading association and authority on interior design education by:

- Advancing responsible design thinking through education, scholarship, and service.
- Advancing the interior design profession's Body of Knowledge.
- Participating in leadership discussions and actions that affect the entire design community.
- Being the primary source of innovative interior design teaching resources.
- Being the leading venue for the publication, presentation, and dissemination of interior design scholarship.
- Preparing members for leadership roles in their academic institutions, communities, and the interior design profession at large.
- Providing support for the professional development of interior design educators at all professional levels.
- Engaging interior design educators in service to the organization and to the greater community.

It has been my pleasure to serve as IDEC President for the 2011-2012 year. This was a special year for the organization with the celebration of our 50th Anniversary. This annual report provides an opportunity to look back and reflect on the year and celebrate the growth and strength of the organization. Although I've served as a volunteer for IDEC many times over the past 25 years, in my role as president I was still astounded by the number of volunteers dedicated to IDEC. The passion for our organization and profession shown by our volunteers was inspiring. I will never forget the members who stepped up in so many ways--it gives me hope for the future of IDEC. We must also thank our staff at Raybourn Group, led by our executive director, Jeff Beachum, for their continual guidance and management.

Our membership continues to grow and the 2011-2012 year saw 875 members. The growth in our emergency reserve fund assures IDEC of its continued presence and influence in interior design education. The contributions to our strategic reserve, created to fund IDEC initiatives, are also growing and vital. Our new member profile allows members to identify others with similar teaching and research interests and experiences.

I'm grateful to the IDEC board of directors for their hard work and support this year. I was privileged to work with Denise Guerin, Past President, who offered wisdom and experience as well as a calming presence. Lisa Tucker, President-Elect, was also a reliable source of IDEC history due to her extensive service record. Migette Kaup kept us on track financially and spearheaded the development of the member profile.

Our directors Scott Ageloff (Teaching), Ellen Fisher (Scholarship), Jacqui McFarland (Service), and Susan Ray Degges (Regions) were instrumental in clarifying the relationship between the boards and the collaboratives and helped keep the organization on course. As a board we continued to implement the new governance structure adopted during Jill Pable's presidential term and solidified the role of our collaboratives. The directors on the board provided guidance for their respective areas, the collaborative coordinators provided management, and the members of the collaborative provided implementation. This framework allows a more grassroots leadership structure. Our regions continue to be active, with many holding regional meetings to allow our members opportunities to connect and share scholarship.

Our 50th anniversary conference was held in Baltimore with the theme Celebrating the Past, Shaping the Future. Thanks to Marymount University and the Community College of Baltimore County for hosting the event and our tireless staff, led by conference planner Patty Warren, who took care of all the details. Jo Heinz served as our evening keynote and Roz Cama inspired us with her opening morning address. At the award banquet we recognized many of the long-serving volunteers who have steered IDEC throughout its history. It was truly a special night. In addition to the celebration of our 50th year, the 2012 conference saw two new events for IDEC, including the Village Square and Pecha Kucha Night. During the Village Square sessions topics of interest, often controversial topics, were discussed in detail with varying opinions heard and then members



Letter from Lisa Waxman, IDEC 2011-2012 President



had the chance to contribute to the discussion. The sessions were face-to-face at conference and were followed up digitally on IDEC's LinkedIn site. This allowed our members unable to attend conference the chance to participate in the discussion. Pecha Kucha Night, where creative teaching ideas were presented in a fun and fast-paced format—only six minutes each-- was a huge success. Members submitted ideas ahead of time for peer review. Based on positive feedback, we'll continue both these activities next year.

Over the last few years, we have worked steadily to revise and implement the new branding of IDEC. The new tag line, "IDEC: Advancing Education, Scholarship, and Service" tells the public who we are and what IDEC values. All communication materials, both printed and digital, with the exception of the web site, have been revised with the new brand. The web site graphics are complete, but implementation will take a while longer. Thanks to the rebrand committee and the communications committee for their work on this 2-year long project. Our newsletter has not only been rebranded, but has had a complete overall and is now in an e-book format. We've assembled a strong editor and editorial team so that more of the activities of the organization and our members can be shared. The communications committee was also busy solidifying IDEC's presence on Facebook, LinkedIn, Twitter, and the IDEC blog.

On the scholarship front, JID, published by Wiley Blackwell, has a strong editorial team and publication board and continues to increase its presence in libraries around the globe. It has moved to four issues per year and added two associate editors.

Our new Teaching Resource Initiative that has been in the development stage for several years launched the first module, a health care studio project. The project is available for purchase at a nominal rate to members and might assist those needing teaching resources. We are using this as a test case to see if members find this resource of value.

Our K-12 Task Force completed its report on the value of quality interior design education for that age group. The International Task Force completed the first phase of its work and made recommendations to the IDEC board.

One of the joys of serving as president was the opportunity to represent IDEC at various conferences and meetings. I attended NeoCON, the NCIDQ delegates meeting, several sessions of Issues Forum, and the International Federation of Interior Architects/Designers (IFI) World Congress in Taipei. It is important for IDEC to be part of the discussion at these events and it was my honor to share the work of IDEC at those meetings. Our representatives to CIDA, NAED, and IDCEC also represented us well at those meetings.

I thank you again for the opportunity to lead the organization this year. I will be forever grateful to the volunteers and staff for their tremendous commitment. I look forward to great things for IDEC in the future. Onward!

Take Care,



Lisa Waxman
IDEC President, 2011-2012



President's Letter Page 2



2011-2012 IDEC Staff



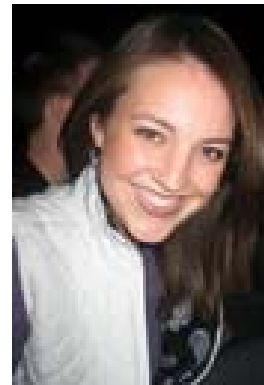
Jeff Beachum



Rachel Daeger



Patty Warren



Bethany Patton

Special thanks to our staff for their hard work and dedication. Special recognition went to Patty Warren during the annual conference awards ceremony when she was awarded a Merit Award for her long-term commitment as our IDEC conference planner.



Lisa Waxman
President



Denise Guerin
Past President



Lisa Tucker
President-Elect



Migette Kaup
Secretary/Treasurer



Scott Ageloff,
Director: Teaching



Ellen Fisher
Director: Scholarship



Jacqui McFarland
Director: Service



Susan Ray-Degges
Director: Regions



2011-2012 IDEC Board of Directors

Thanks to the IDEC
Board of Directors for
the dedication and
service.

Regional Collaborative

Susan Ray-Degges, Board Liaison, North Dakota State University
TBD (East Chair), Ryerson University
Suining Ding (Midwest Chair), Indiana University- Purdue University
Darrin Brooks (Pacific West Chair), Utah State University
Jane Nichols (South Chair), Western Carolina University
Ron Reed (Southwest Chair), Texas State University

Scholarship Collaborative

Joy Dohr, Collaborative Co-Coordinator, University of Wisconsin-Madison
Wei Dong, Collaborative Co-Coordinator, University of Wisconsin-Madison
Jennifer Web, JID Chair, University of Arkansas
Meg Portillo, JID Editor-in-Chief, University of Florida
Doug Seidler, Proceedings Coordinator, Marymount University
Meg Konkell, Abstract Review Coordinator, Marymount University
John Humphries, Creative Scholarship Co-Coordinator, Miami University
Maura Schaffer, Creative Scholarship Co-Coordinator, Purdue University
Ellen Fisher, IDEC Board Liaison, New York School of Interior Design

Teaching Collaborative

Cindy Mohr, Collaborative Co-Coordinator, University of N. Texas
Rachel Pike, Collaborative Co-Coordinator, Intl. Acad. of Design & Technology
Barbara Anderson, IDEC Academy Chair, Kansas State University
Joy Dohr, SIDE Committee Chair, University of Wisconsin-Madison
Catherine Anderson, Innovative Teaching Resources, George Washington University
Stephanie Clemons, K-12, Colorado State University
Scott Ageloff, IDEC Board Liaison, Philadelphia University

Service Collaborative

Vacant Position, Collaborative Coordinator
Marty Hylton, Grants and Awards, University of Florida
Jacqui McFarland, IDEC Board Liaison, Mount Royal University

IDEC Academy

Barbara Anderson, Chair, Kansas State University
Connie Dyar, Administrator, Illinois State University
Ron Reed, Member-at-Large, Texas State University
Linda Nussbaumer, IDCEC Liaison, S. Dakota State University
Catherine Anderson, Member-at-Large, George Washington University
Carolyn Gibbs, Member-at-Large, California State University-Sacramento
Stephanie Zollinger, Member-at-Large, University of Minnesota

Journal of Interior Design Board

Jennifer Webb, Chair, University of Arkansas
Meg Portillo, Editor-in-Chief, University of Florida
Bridget May, Associate Editor, Marymount University
Janetta McCoy, Associate Editor, Washington State University
Jane Kucko, Member, Texas Christian University
Joan Dickinson, Member, Radford University

Communication Committee

Irina Solovyova, Chair, University of Texas, San Antonio
Seunghae Lee, Conference Communications Chair, Purdue University
Lindsay Tan, Social Networking Chair, Auburn University
Michael Dudek, Blog Master, Kansas State University
Patrick Lucas, Archivist, University of North Carolina-Greensboro
Lisa Tucker, Board Liaison, Virginia Tech

Newsletter Editorial Team

Jonathon Anderson, Editor-in-Chief, University of North Carolina-Greensboro,
Gregory Marinic, Research Activities Editor, University of Houston,
Michelle Belt, Industry & Professional Editor, Lawrence Technological University,
Lindy Balls Huling, Emerging Talent Editor, Virginia Tech
Robert Reid, International Editor, American University of Sharjah,
Scott Williams, Service Editor, University of Oklahoma
Peggy Honey, Teaching Editor, Kansas State University

Liaisons to External Organizations

Linda Nussbaumer, IDCEC Liaison, S. Dakota State University,
Caren Martin, Legislative Advisor to the Board, University of Minnesota,
Carl Matthews, Liaison to CIDA, University of Texas-Austin,
Rick Navarro, Rep. to ASID EITC Council, Miami Intl. Univ. of Art & Design,
Caren Martin, National Academy of Environmental Design, University of Minnesota

2012 Conference Hosts

Bridget May, Marymount University
Jean Freeman, Marymount University
Bob Meden, Marymount University
Robin Wagner, Marymount University
Moirra Gannon Denson, Community College of Baltimore County

50th Anniversary Committee

Buie Harwood, Chair, Retired- Virginia Commonwealth,
Dorothy Fowles, Iowa State University
Marty Hylton, University of Florida
John Turpin, High Point University
Young Lee, Michigan State University
Bridget May, Marymount University
Amy Dahm, Texas Christian University

Foundation Board

Ted Drab, President, Oklahoma State University
Tim Cozzens, Vice President, Columbia College
Chris Johnson, Treasurer, Georgia Southern University,
Janine King, Secretary, Florida International University
Olga Kontzia, Member, Fairchild Books
Denise Guerin, IDEC Board Liaison, University of Minnesota

Fellows Chair

Jane Kucko, Texas Christian University

Network Chairs

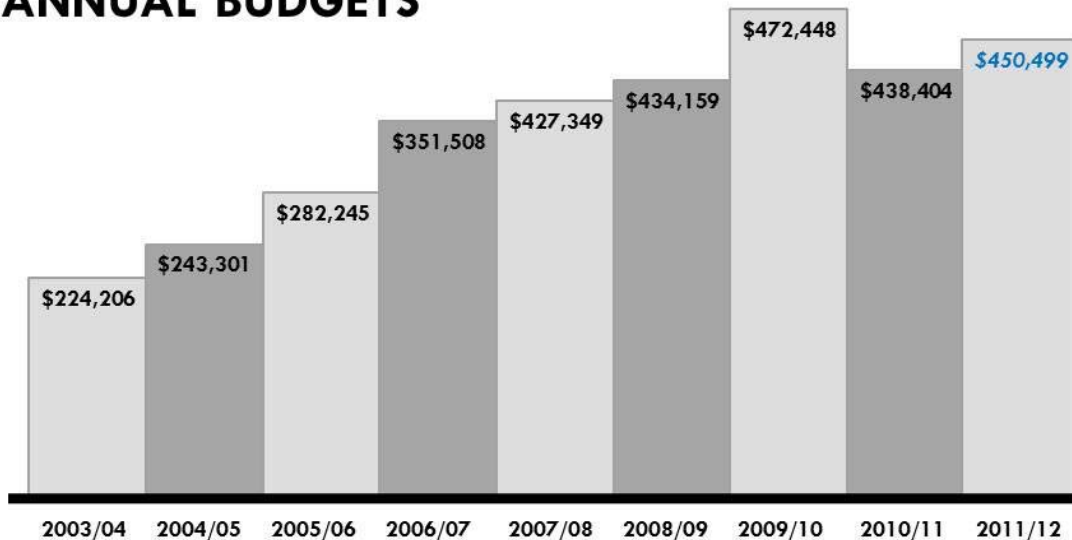
Program Chairs: Ronnie Whitman, Art Institute of California,
2 & 3 Year Programs: Diana Ingram, Johnson County Comm. College,
Emerging Technologies: Matt Dunn, Louisiana State University,
Emerging Technologies: Chris Johnson, Georgia Southern,
Lighting: Ruth Beals, Converse College
K-12: Stephanie Clemons, Colorado State University,
Right to Practice: Marilyn Whitney
International Member Assistance: Ryadi Adityavarmam, SCAD,
Social Responsibility: Jeanne Mercer-Ballard, Appalachian State University,
Distance Learning: Susan Ray-Degges, N. Dakota State University
Emerging Faculty: Lindsay Tan, Auburn University
Diversity: Abi Asojo, University of Minnesota,
Multidisciplinary Collaboration: Hepi Wachter, University of Oklahoma,
Research & Scholarly Activity: Jane Nichols, Western Carolina University,
Research & Scholarly Activity: Tiiu Poldman, University of Montreal



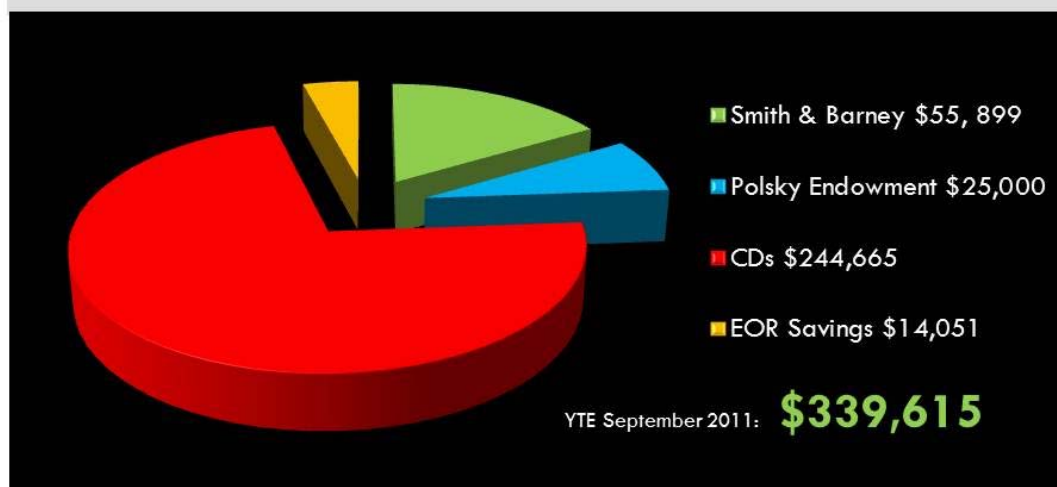
Volunteer Leaders

Our volunteer leadership is essential to the success of the organization. Special thanks to these volunteers.

ANNUAL BUDGETS



Emergency Operating Reserves



Finances

IDEC's financial picture continues to be strong with growing membership numbers. The emergency reserve puts IDEC in a stable financial situation and the strategic reserve allows special initiatives to be funded.

Strategic Plan: Teaching



WORKING DRAFT 20 APRIL 2012

TEACHING

Objective

Initiative/ Strategies (Measurable Outcome)	Priority	Timeline (Begin & End)	Cost	Initial Contact	Suggested Actions (other actions may be added by work group)
1 Provide high quality teaching resources for members and non-members who represent a diverse range of undergraduate and graduate interiors programs					
A Teaching Resources Initiative (TRI)	IP	First Phase- Complete Second Phase - Launch product 1 by Spring 2012, Phase 3: evaluate and revise content, methods, etc.		Catherine Anderson	(i) Develop site, sample, evaluated and ready for launch; marketing/ feasibility (done F '10 - 1st outcome is ready for launch) (ii) Academy needs to develop cost and evaluation tool; (iii) Develop business plan
B CEU courses on Teaching	IP	Ongoing	Staff	Teaching Collaborative Coordinator and Academy Coordinator	(i) Develop plan; (ii) Identify f2f (conference workshops?) and online opportunities (webinars, etc.); (iii) Summer Intensives as revenue generation -ergonomics, health care design, etc. (iv) Evaluate effectiveness of and revenue generated by current products; (v) Develop business plan
C Coordinate availability existing teaching resources, e.g., Academy, TRI, sustainability curriculum	HIGH	Be aware of publication dates for IDEC media	Staff Volunteers	Teach Collaborative Coordinator works with Communication Committee Chair	(i) Identify the resources that need to be publicized; Identify appropriate outlets for publicity; (ii) Develop protocol to assure information accuracy
D Determine follow-up activities from Village Square event 2012 regarding different program types.					
E Identify recommendations for IDEC to engage with educators K-12. Initiative and develop plan of engagement. (Concern that it will not overlap with Academy or TRI at this time.)				Director of Teaching and Teaching Collaborative K-12 Task Force to be appointed	(i) Follow-up on development of Junior Certificate program via AAFC; Development of exam; Development of course materials; Engage with Issues Forum to develop program; (ii) Will require access of K-12 curriculum standards, call for authors, determining marketing channels to K-12 educators, setup for payments/royalties, etc.; (iii) Call for authorship of courses; distribution method
2 Establish and facilitate the linkage between Education and Practice					
A Continue IDEA Line	IP	Continuing	None	Joy Dohr until others identified	Develop FAQ page; could be sent to ASID, IIDA, IDC, etc.; could be posted on IDEC web site; could be knowledge for new IDEA line person
B Continue CEUs on Teaching for practitioners	HIGH			Regional Collaborative	do this at regional conference
C Create an online "Planned" learning community – identify a selected group of readings and have members of the online learning community participate/review/react					
3 Support Development of Faculty Members					
A Develop a mentor program for emerging Faculty					Focus on professional career growth (not to find a research partner) -consider summer externship for faculty with design firms

Strategic Plan: Scholarship



WORKING DRAFT 20 APRIL 2012

SCHOLARSHIP

Objective

Initiative/ Strategies (Measurable Outcome)	Priority	Timeline (Begin & End)	Cost	Initial Contact	Suggested Actions (other actions may be added by work group)
1 Continue to develop understanding of different scholarship paths for interior design educ./scholar					
1. Revise the conference scholarship review system including presentations, panels, forums, posters, and creative submissions.	HIGH	March 2011 - Summer 2011	Volunteers	Scholarship Collaborative Coordinator and scholarship review co-chairs	(i) Review and refine process to select reviewers/jurors & process to orient same; (ii) Webinar (post workshop 2012)—attendance required
A 2. Creative Scholarship: Clarify the definition of "Creative Scholarship"; Review the evaluation of Creative Scholarship to enhance validity and perception of validity					(i) Create taskforce to: (a) investigate other scholarly definitions of and rubrics to evaluate Creative Scholarship" with a timeline of October 2012 for delivery of findings to Board; (b) formalize Juror Selection for CS; (c) formalize the criteria for the Call (d) set the format of submissions; (e) include Interior Design as a category of CS (f); draft criteria for the selection of the CS Coordinator
B Identify and publicize opportunities for funding					Create links to other conferences and organizations to the IDEC website, in order to increase opportunities
C Possible pre-conference workshops for alternative scholarship paths					investigate different methods of collecting and scoring abstracts to improve on this year's system including (a) How to submit and abstract; (b) How to do creative scholarship, etc. for all types, for beginners (low cost)
2 Provide opportunities for dissemination of scholarship in Interior Design Education					
A Conferences (annual and regional)	IP	Ongoing		All Collaborative Coordinators	(i) Explore international, topical symposia, best teaching practices, etc.; (ii) Conference website 2013
B Journal of Interior Design	IP	Ongoing		JID Board Director of Scholarship	(i) Higher visibility of JID and submission requirements on the website; (ii) Ask other design professional organizations to publicize JID; (iii) Special Issue 2014: Leadership in Interior Design Education; (iv) Use the IDEC Exchange and Enews to publicize JID articles and issues
C Write procedures for jury selection and make process double blind reviewed (clarify role of leadership versus submittal)	HIGH				Make consistent acceptance levels across all types of scholarship (creative and traditional—same rate of acceptance)
D Advertise IDEC calls for creative scholarship in other venues	MOD			Volunteers—John Humphries	Creative Scholarship co-coordinators
3 Provide opportunities for career development through Interior Design scholarship					
External Mentor networking A Think this is already done informally and could be better accomplished through pre-conference workshops	HIGH / completed? See 1D	2011-2012	Volunteers	Scholarship Collaborative	(i) Gather information from members and feedback from Fellows; (ii) Create a Task Force to articulate concrete strategies for addressing External Mentoring Services
B JID Workshop - new and author/ reviewer	IP / Ongoing	2012	Volunteers	JID Board JID task force to come up with plan	Determine past attendance; interactive nature, effectiveness, etc. and plan for third session in the series for 2012. Work through the IDEC Academy to organize.
4 Provide opportunities for dissemination of scholarship in ID education					

Strategic Plan: Service



WORKING DRAFT 20 APRIL 2012

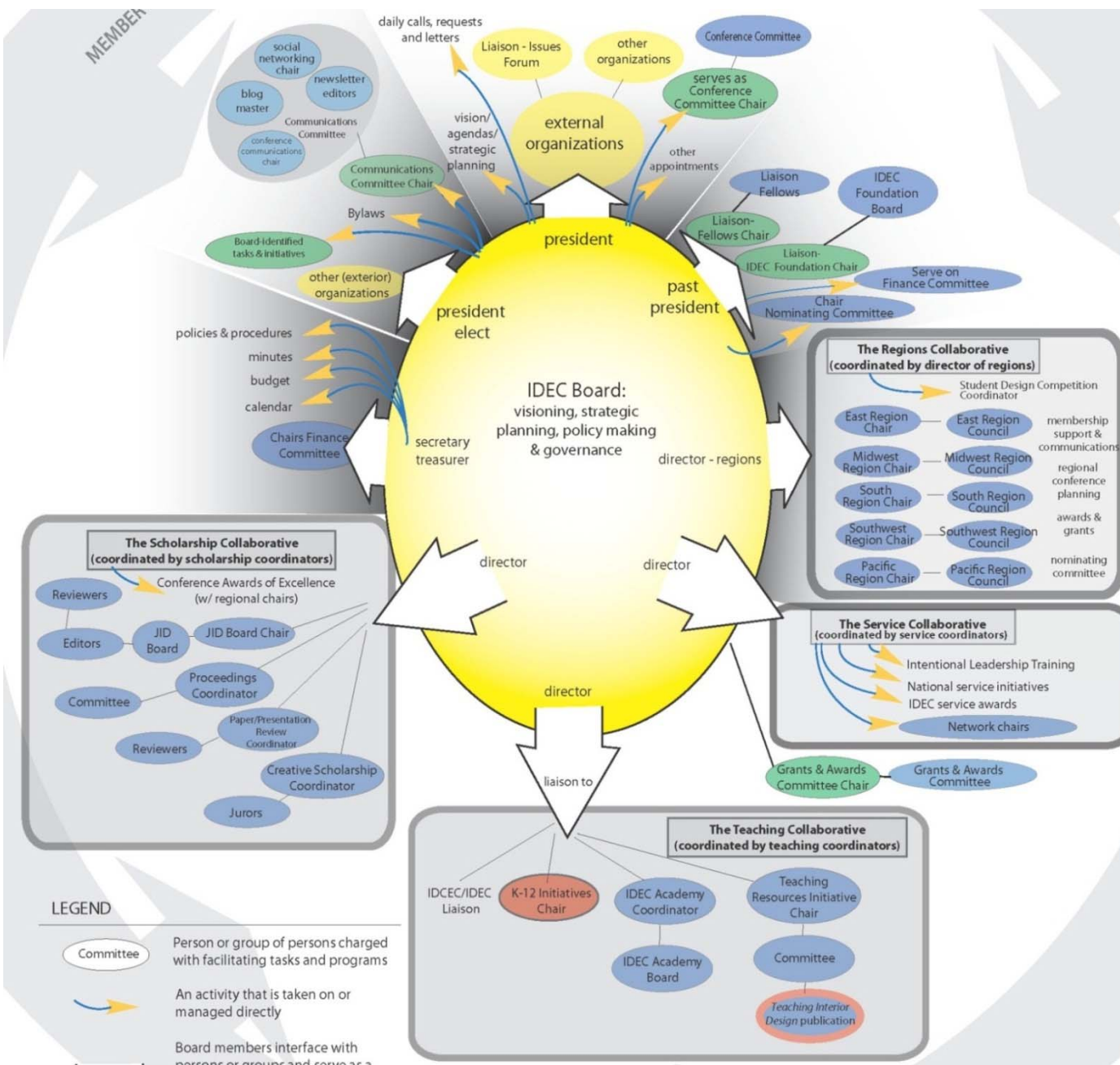
SERVICE	Objective	Priority	Timeline (Begin & End)	Cost	Initial Contact	Suggested Actions (other actions may be added by work group)
	Initiative/ Strategies (Measurable Outcome)					
	1 Develop a mission statement for the collaborative					
	A Prepare draft for review by Board	IP	Summer Board Retreat		Collaborative Coordinators, President, Past President, Executive Director	Develop draft mission statement in consultation with Collaborative Coordinator, IDEC Executive and Executive Director
	2 Engage Educators in service opportunities within IDEC, the Profession, and the global community					
	Audit Service all volunteer positions available within IDEC: including qualifications, commitment necessary to fulfill the roles, as well as succession planning requirements.	IP	Summer Board Retreat	Staff Time	Staff & Collaborative Coordinators	Examine existing Volunteer Roster and devise a list of volunteer opportunities
	B Clarify routes to volunteer pathways within IDEC organization					(i) Create 'Volunteer Pathways' diagram for various positions, clarifying which require qualifications, duration of term, reporting procedures, etc.; (ii) Define Regional Council Roles and post online under regional pages to promote greater awareness of involvement at the regional level
	C Develop 'invite' strategies relative to volunteer position					Review various methods/ procedures for engaging members in service and determine how to reach out to IDEC members throughout the year and at conference
	D Create a 'volunteer pool' of interested and qualified IDEC members for service to the profession and the broader community available on the IDEC website.					
	3 Provide effective development and support for all IDEC Volunteers					
	A Determine support required for various volunteer positions (supporting documents, webinars, training, acronym debriefing, etc.)	IP	2013 Conference		Collaborative Coordinator, Executive Director	Create pre-conference workshops for all volunteer positions requiring qualifications, i.e. reviewers
	B Establish clear succession for smooth transitions (newbie...doobie... sage)					Create volunteer orientation packages to provide background information with respect to the organization, job expectations, timelines, reporting process, etc.
	4 Celebrate the contributions of IDEC volunteers within the organization, the profession, and the broader community					
	A Understanding current recognition strategies, i.e. Merit Awards, Service Awards, Service Certificates, website and newsletter callouts and building upon this.		2013 Conference		Collaborative Coordinator, Executive Director, Past & Current Presidents	Create recognition strategy for volunteers based on role of engagement, (i.e. Service Awards, Letters of Recognition, newsletter article/ mention, publicized in other associations newsletters, websites, etc.
	B Review other methods of recognition, i.e. letters to institutions highlighting service to IDEC					Regional Level Conference expand awards/recognition of member involvement
	5 Prepare members for leadership roles in their institution, communities, and the ID profession at large					
	A Intentional Leadership Pre-Conference Workshop	IP	2013 Conference		Service Collaborative Coordinator, Program Chair + Coordinator, Networks, Rachel Pike ?	(i) Identify person(s) who conduct training; (ii) Task membership to form "Intentional Leadership" committee
	6 Promote the value of interior design education to the public					
	A Video competition moves here.					Each Regional Conference provides educational opportunity either to the community (whether through presentation or public service project) to help promote value of ID Education

Strategic Plan: Operations



WORKING DRAFT 20 APRIL 2012

OPERATIONS	Objective					
	Initiative/ Strategies (Measurable Outcome)	Priority	Timeline (Begin & End)	Cost	Initial Contact	Suggested Actions (other actions may be added by work group)
	1. Increase member resources via member demographics					
	A Gather data during member renewal on: members' research interests, mentor interest, external reviewers, NCIDQ passage, where they graduated, licensed or certified?	IP	Should be ready for 2012 dues renewal	Staff	Service Collaborative Coordinator and staff; Migette with develop form	(i) Develop searchable database for IDEC and member use; (ii) Coordinate with ComCom to announce this member profile benefit. Publicize with eNews, eRecord, post of Facebook and LinkedIn
	2. Increase member expertise visibility by providing awards and recognitions for members' work					
	A Awards to members and non-members as a means of raising the profile of the organization and supporting development activities.	IP	June 2010 and ongoing	\$3000-5000 donation; New physical awards, \$250	IDEC Foundation	(i) Identify funder for Distinguished Educator Award; (ii) Explore funding of new awards
	B Develop a marketing strategy			??	Board / Executive Director	Need to develop a plan for marketing the organization and the valuable work of the members. Who does IDEC Marketing?
	3. Improve method for membership to get ideas, concerns, and issues to other members and Board					
	A Assess and follow up on Village Square Dialogues.				Lisa Waxman	Summations from Village Square to be analyzed and reported. Key issues may be posted on discussion sites like LinkedIn or on the IDEC Blog.
	4. Increase visibility and usability of existing IDEC resources					
	A Updating of web site.	IP		already budgeted		(i) enhance the member profile page and provide opportunities for members to link to other online resumes, portfolios, or web pages; (ii) Define between "members only" profile information versus publicized profile results.
	B update/revise regional page to enhance ease of access to necessary regional materials (i.e., regional conference call for abstracts/creative work; student competition)					
	5. Determine staff/member ratio for optimum member service and efficient					
	A Develop strategy for determining staff/member ratio	HIGH	Jul-11	Staff	Finance Committee	(i) Study other organizations for staff/member ratio; (ii) Determine type of staff needed in future; (iii) Determine appropriate ratio



Continuing the Transition to the New Governance Structure

The new governance structure, adopted in 2009, was further refined. The regional collaborative was created, the role of the collaborative coordinators was clearly defined, the regional chair representative position moved to a director position with a two-year term, and the grants and awards committee was separated.



Member Profile

Members now have the option to add information about their teaching and scholarship so members can connect with those with similar interests.

I currently teach at a... (If you are retired, select the type of institution that you worked for last.) *Check all that apply.*

- ☐ Public institution – not-for-profit
- ☐ Private institution – for profit
- ☐ Private institution – not-for-profit
- ☐ Other
- ☐ Uncertain

I teach in a... *Check all that apply.*

- ☐ High School Program
- ☐ 2-3 Year program
- ☐ 4-5 Year program
- ☐ Undergraduate program
- ☐ Graduate program

The Interior Design program(s) that I teach
Check all that apply.

- ☐ American Association of Family and Consumer Sciences
- ☐ Council for Interior Design Accreditation
- ☐ Institutional accreditation (e.g. NCAC)
- ☐ National Association of Schools of Art and Design
- ☐ Other
- ☐ I'm uncertain of the accreditations

I am also a member of... *Check all that apply.*

- ☐ American Institute of Architects (AIA)
- ☐ American Society of Interior Designers (ASID)
- ☐ Association of Collegiate Schools of Architecture (ACSA)
- ☐ Environmental Design Research Council (EDRC)
- ☐ The Hospitality Industry Network (HIN)
- ☐ Illuminating Engineering Society (IES)
- ☐ Interior Designers of Canada (IDC)
- ☐ Interior Design Society (IDS)
- ☐ International Association of Light and Color (IALC)
- ☐ International Facility Management Association (IFMA)

I hold the professional credentials of... *Check all that apply.*

- ☐ American Academy of Healthcare Interior Designers (AAHID)
- ☐ American College of Healthcare Architects (ACHA)
- ☐ Architect Registration Exam (ARE)
- ☐ Certified Aging in Place Specialist (CAPS)
- ☐ Certified Bath Designers (CBD)
- ☐ Certified Kitchen Designer (CKD)
- ☐ Certified / Registered / Licensed Interior Designer
- ☐ Evidence-based Design Accreditation
- ☐ LEED Certification (LEED AP)
- ☐ National Council for Interior Design
- ☐ National Council for Qualified Lighting Designers
- ☐ Other
- ☐ Other
- ☐ NA

I hold the academic credentials of... *Check all that apply.*

- ☐ Master of Architecture (MArch)
- ☐ Master of Art (MA)
- ☐ Master of Fine Arts (MFA)
- ☐ Masters of Science (MS)
- ☐ Masters of Design (MSD)
- ☐ Masters of Interior Design (MID)
- ☐ Masters of Interior Architecture (MIA)
- ☐ Doctor of Architecture (DArch)
- ☐ Doctor of Arts (DA)
- ☐ Doctor of Design (DDes)
- ☐ Doctor of Education (EdD)
- ☐ Doctor of Philosophy (PhD)

I hold the academic rank of... *Check all that apply.*

- ☐ Visiting Lecturer / Adjunct Instructor

I hold the academic rank of... *Check all that apply.*

- ☐ Visiting Lecturer / Adjunct Instructor
- ☐ Instructor
- ☐ Assistant Professor
- ☐ Associate Professor
- ☐ Professor (Full)
- ☐ Other

Professional Practice & Teaching

What is your level of involvement in practice (related to the design of interior environments) relative to your teaching responsibilities? *Check all that apply.*

- ☐ I only teach
- ☐ I teach more than I practice
- ☐ I teach and practice equally
- ☐ I practice more than I teach
- ☐ I am retired
- ☐ Other

Administrative / Directed Service Appointment

I serve or have served as... *Check all that apply.*

- ☐ Dean (or equivalent)
- ☐ Associate or Assistant Dean (or equivalent)
- ☐ Department Head/Unit Chair
- ☐ Program Coordinator/Director
- ☐ Graduate Program Chair/Coordinator
- ☐ Other

Service: I engage in service...

To IDEC: I serve or have served IDEC in the following capacities *Check all that apply.*

- ☐ Board of Directors
- ☐ Committee Leadership (Task Force, Foundation Board, Academy Board, Conference planning, etc.)
- ☐ Committee participation (you have served on any committee)

Brand Refresh Project



In 2011-2012, IDEC worked steadily to complete the rebranding of IDEC. All communication materials, both printed and digital, with the exception of the web site, have been revised with the new brand. The web site graphics are complete, but implementation will take a while longer. Thanks to the rebrand committee and the communications committee for their work on this 2-year long project. Our newsletter has not only been rebranded, but has had a complete overall and is now in an e-book format. We've assembled a strong editor and editorial team so that more of the activities of the organization and our members can be shared. The layout of the web site has been created but there is much work left to do with the structure of the site before this template can be implemented. We look forward to seeing this format in the near future.

**Proposed Web
Site Format**



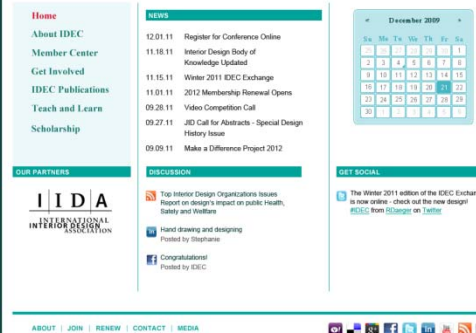
eNews

IDEC eNews December 2011 edition

IN THIS ISSUE

Renew your IDEC membership for 2012
2012 Annual Conference Update
IDEC Exchange Newsletter - February Theme
50th Anniversary History Minute- The Development of InformeDesign
Social Media Snapshot

FEATURED



ABOUT | JOIN | RENEW | CONTACT | MEDIA



**IDEC
Exchange
Newsletter**

2011 Winter

IDEC Exchange
A Forum for Interior Design Educators

Student Spotlight: Competitions
IDEC 2012 Annual Conference: Celebrating 50 years
Design Intelligence 2012 Top 10 Interior Design Programs



Image: Cactus Chair, designed by Felicia Dean, MS Student at University of North Carolina at Greensboro

Social Networking



LinkedIn Account Type: Basic

Home Profile Contacts Groups More

Now there's another great way to start a conversation with your group! Click on "Poll" to get started.

Start a: Discussion Poll

Start a discussion or share something with the group...

Manager's Choice

Call for IDEC positions

Latest Updates

Meredith Lesher, Allied ASID has joined the group.

Charmaigne Gaylon, Rachel Barefoot and John Basse have joined the group.

Rina Naik commented in the group on Plan to attend the JID Writers Workshop at IDEC 2012 Conference: As an MFA student and a first time attendee I am very eagerly looking forward to this workshop. I am very interested in exploring the...

Most Popular Discussions

Plan to attend the JID Writers Workshop at IDEC 2012 Conference

Joy Dohr, Moderator, JID Editorial Team - Margaret Portillo, Editor in Chief, and Associate ...

idec.org

As an MFA student and a first time attendee I am very eagerly looking forward to this workshop. I am very interested in exploring the ...

sted in encouraging free hand sketching in our classes to generate

land Sketches – The Voices Of A Architectural Designer

hand.wordpress.com

Free hand sketches - the voices of an architectural offer an entry into the creative process of the architect. Sketching, of course, is a termed

month ago

Nandita Mishra 3 days ago • Nandita likes this.

The communications committee worked to enhance the social networking presence of IDEC on Facebook, LinkedIn, Twitter, YouTube, and the IDEC Blog



IDEC's launch of its social networking received an award from the Indiana Society of Association Executives.

JOURNAL OF INTERIOR DESIGN



*Theory
Research
Education
Practice*

EDITOR INTRODUCTION

Sustainability: Environmentally Responsible Interior Design v *Janetta McCoy, Ph.D.*

PERSPECTIVE

Reflections on Sustainable Design vii *Susan S. Szenasy, M.A.*

ARTICLES

Net Zero Housing: The Architects' Small House Service Bureau and Contemporary Sustainable Single-Family House Design Methods for the United States 1 *Lisa M. Tucker, Ph.D.*

Understanding Controls, Behaviors and Satisfaction in the Daylit Perimeter Office: A Daylight Design Case Study 17 *Julia Day, M.A., Judy Theodorson, M.Arch., and Kevin Van Den Wymelenberg, M.Arch.*

Using Building Information Modeling for Green Interior Simulations and Analyses 35 *Young S. Lee, Ph.D.*

VOLUME 37 NUMBER 1

2012



I D E C[®]

Journal of Interior Design

The Journal of Interior Design will move to four issues per year. Meg Portillo serves as editor with assistance from associate editors Bridget May and Janetta McCoy. The international presence of the journal is growing.