

HÓZHÓ

WEAVING & TEXTILES

ABOUT THE NAME

Hozho is a Navajo philosophy which encompasses the concept of striving for balance and harmony. The goal of Hozho Weaving is to create a balance between living and work spaces to facilitate a sustainable lifestyle.

CLIENT

The Navajo weaver identifies as a two spirit (nádleehi in Navajo), meaning they have both a male and a female spirit. The project reflects this important aspect of their identity — finding balance between two opposites. They specialize in Two Grey Hills style, which emphasizes balance and symmetry.

SITE

Page, Arizona is a relatively new city on the border of the Navajo Nation. It is quickly gaining popularity in the tourism industry due to its proximity to Antelope Canyon and Horseshoe Bend, two of the most photographed sites in the Southwest. It is also near Lake Powell, which draws even more tourists.

Page was chosen to be the site for the project not only because of its robust tourism industry, but also because it is close to a sacred Navajo site, Rainbow Bridge. Rainbow Bridge is a naturally formed archway; in Navajo tradition, one side of the bridge is male, the other is female, and their union together created rain and rainbows. Hozho itself is to be located on the western side of the city, near the Glen Canyon Dam and plenty of hotels to draw in tourists as customers. The city is quite well developed with hotels, restaurants, retail stores, grocery stores, medical facilities, and a post office all within a 20 minute drive from the site.

CONCEPT

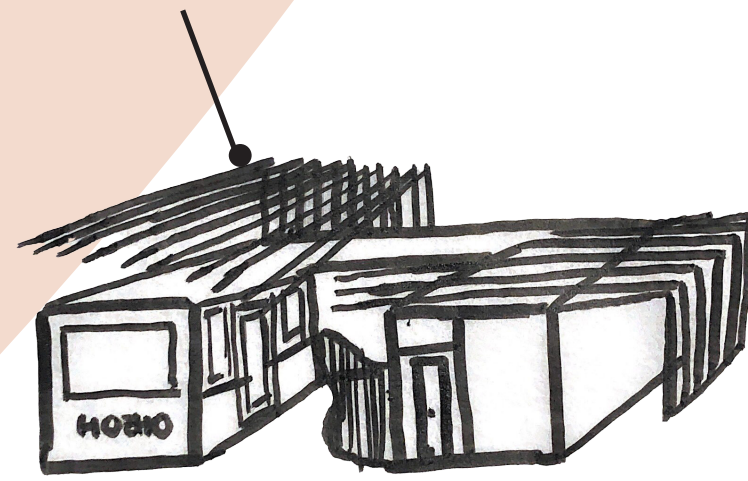
Navajo culture emphasizes duality in all aspects of life. However, it also recognizes that not everything is black and white — everything exists on a spectrum, just as a two spirit falls on the spectrum between male and female. Hozho Weaving represents the balance that can be achieved in the place where two opposites are woven together, just as the male and female sides of Rainbow Bridge meet. The project seeks to create a work life balance for the client, as well as address issues of sustainability and food sovereignty.

CONTAINER ORIENTATION

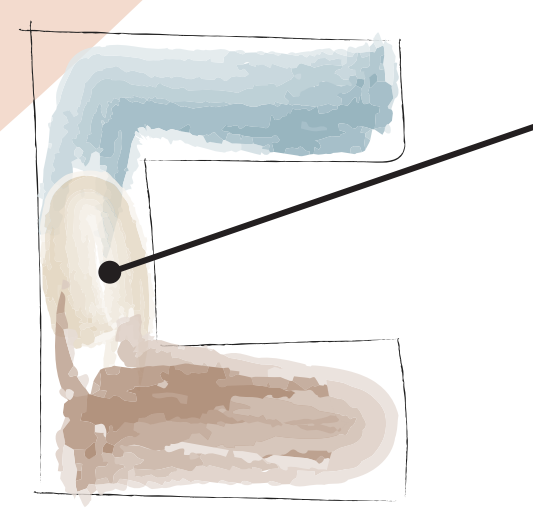
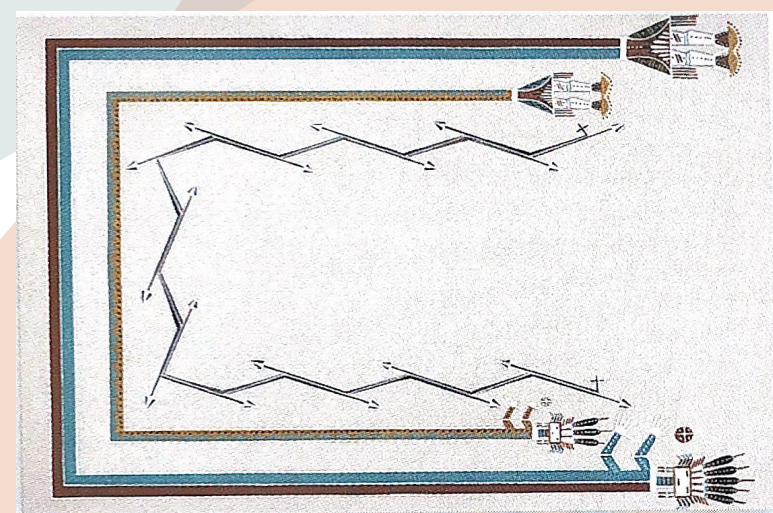
The configuration of the shipping containers draws on the structure of traditional Navajo sandpainting. The image (below) illustrates a typical border that would surround a sandpainting. In Navajo tradition, a long guardian protects the North, West, and South sides of the painting, with the East side of the painting being left open, but often guarded by two lesser guardians. Anything within this structure is believed to be protected by these guardians. By recreating this structure with the shipping containers, a central courtyard which evokes a sense of safety and protection is created.



The shade structure mimics the shape of a Navajo weaving comb, with long wooden slats. The structure encompasses the containers, creating a balance between natural and industrial elements on the exterior of the building.



The layout of the public, private, and flex spaces reflects the balance between two opposites and where these opposites meet. The public and private spaces meet in the westernmost container and blend to create a flex space.



SITE LOCATION

The site itself is 786 Toroweap Way, just east of the Glen Canyon Dam. It is currently an empty plot of land. There are several residences in the loop surrounding the site. There are also two hotels and a restaurant located along the same street. The site is tucked away from the more developed part of the city, allowing for a quiet living environment. However, the site is located near the dam, which will draw customers out of the city and towards the site.

KEY

- Grocery
- Hotel
- Retail
- Restaurant
- Hospital

REFERENCES

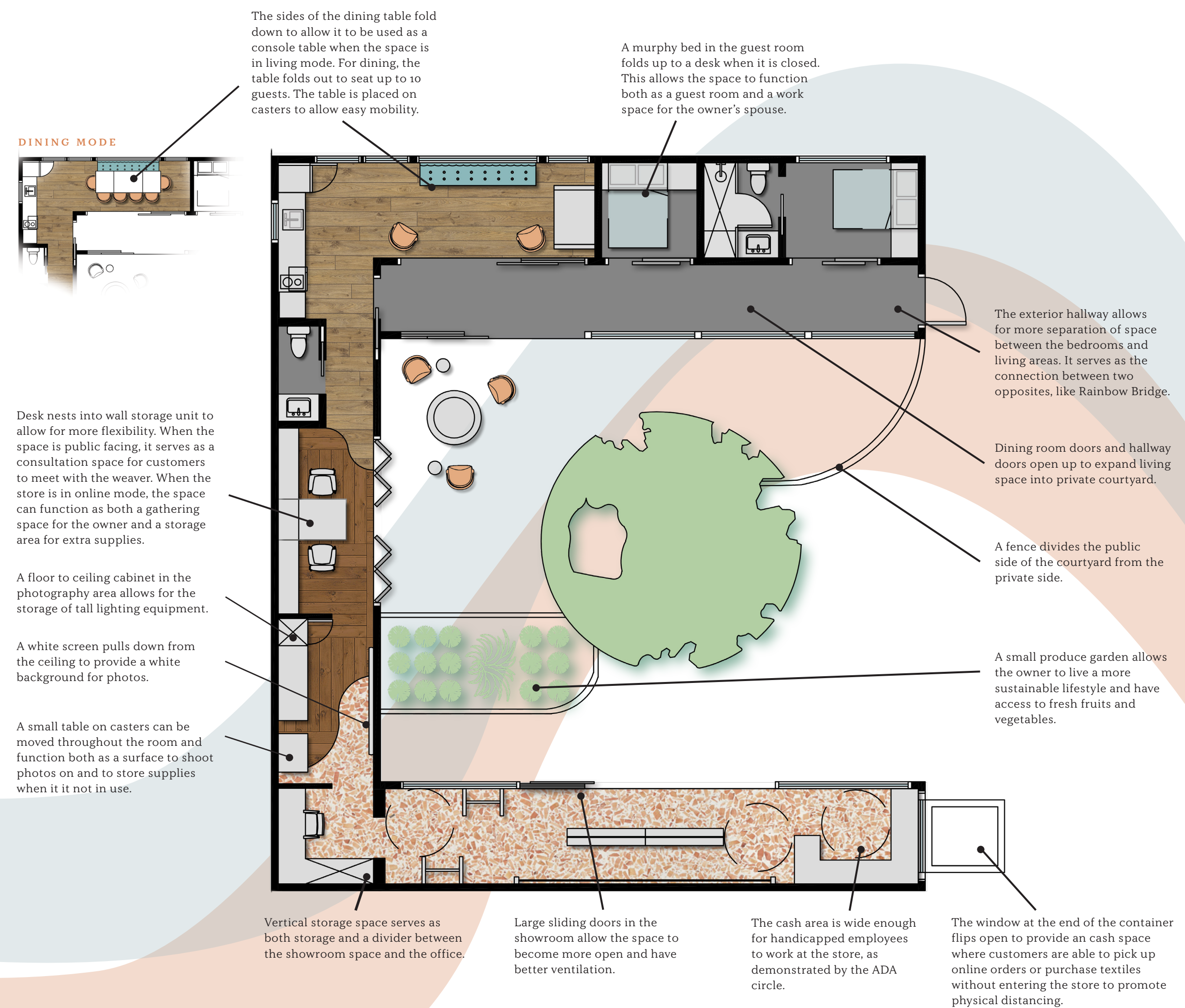
MacPherson, Robert S. Sacred Land, Sacred View: Navajo Perceptions of the Four Corners Region. Brigham Young Univ., 1995.
 Frisbie, Charlotte Johnson, et al. Food Sovereignty the Navajo Way Cooking with Tall Woman. University of New Mexico Press, 2018.
 Crawford-Lackey, Katherine, and Megan E. Springate. Identities and Place: Changing Labels and Intersectional Communities of LGBTQ and Two-Spirit People in the United States. Berghahn, 2020.

"Balance and Beauty in Navajo Worldview." Omeka RSS. www.dlib.indiana.edu/omeka/mathers/exhibits/show/navajo_weavings/balance-beauty.
 Kreider, Mattilda. "13 Grocery Stores: The Navajo Nation Is a Food Desert." Planet Forward. www.planetforward.org/idea/13-grocery-stores-the-navajo-nation-is-a-food-desert.
 Valette, Rebecca M., et al. Navajo Weavings with Ceremonial Themes: a Historical Overview of a Secular Art Form. Schiffer Publishing Ltd, 2017.

Bahti, Mark, et al. Navajo Sandpaintings. Rio Nuevo Publishers, 2009.
 James, Harold L. Rugs & Posts the Story of Navajo Weaving and Indian Trading. Schiffer Publ, 2005.
 Cheetham, Joshua. "Navajo Nation: The People Battling America's Worst Coronavirus Outbreak." BBC News, BBC, 15 June 2020. www.bbc.com/news/world-us-canada-52941984.
 Page, Susanne, and Jake Page. Navajo. Rio Nuevo Publishers, 2010.



PUBLIC ENTRANCE





PRIVATE ENTRANCE

The residents park their car to the west side of the building and then walk up a shaded outdoor corridor to get to their front entry. The shade structure continues beyond the length of the container to create a pseudo front porch to allow the residents to interact with the rest of the community. The residents then enter the building through an exterior corridor that has been added on to the converted containers.

SHOWROOM

The showroom uses a neutral color palette with pops of orange to let the textiles stand out. The showroom is open to the maker space to allow customers to watch the weaver work.



PRIVATE COURTYARD

The private courtyard directly juxtaposes the public courtyard on the opposite side of the fence. The two courtyards, while serving opposite purposes, work together to create a work life balance both indoors and outdoors.



MATERIALS

The complementary colors orange and blue represent two direct opposites on the color wheel. They are also reminiscent of the colors of an Arizona landscape: reddish orange rock formations and blue skies and rivers. Adding pops of these colors on a backdrop of neutrals allows the weavings to take center stage in the showroom. The materials themselves create a balance between natural and industrial elements, just as the shipping container's industrial appearance balances against the beautiful Arizona landscape.

JUTE CARPETING
Sound Absorptive
Soft Underfoot

EARTH TONED TILE
Durable
Eco-Friendly
Temperature Adaptable

VINYL WALLPAPER
Easy to Clean
Durable



CORK FLOORING
Comes In Many Patterns
Sound Absorptive
Thermal Insulator
Highly Sustainable

TERRAZZO
Durable
Easy to Clean
Eco-Friendly

FAUX LEATHER
Long Lasting
Recyclable
Connection to Site



DINING & LIVING

The custom dining table allows for maximum flexibility for any number of guests. The sides of the table fold down individual, meaning the resident can use both, just one, or neither depending on the number of guests. The bench seat also serves as an extra storage area with built-in cubbies.

FLEX SPACE

The flex space has the ability to function as a consultation space, a gathering space, or a storage space. When the store is fully open to the public, a desk folds down so that the weaver is able to meet with clients who want to commission a textile. When the store is fully online, the space can function as more of a storage area as well as a space for the owner to gather with their guests simply by opening the doors to the courtyard.



SECTION CUT

NOT TO SCALE