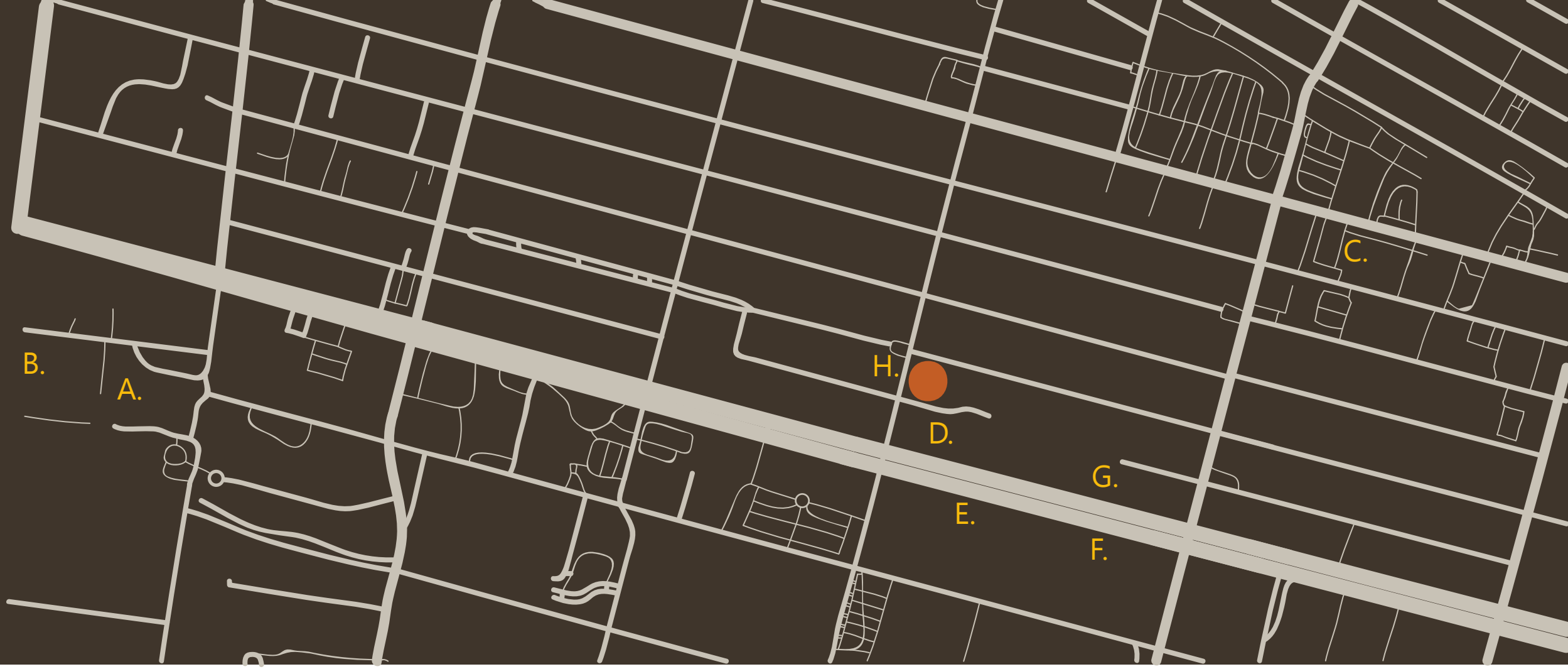




LOCATION:

4242 S Boyle Ave
St. Louis, MO

- A. Barnes-Jewish Hospital
- B. St. Louis Children's Hospital
- C. Red Cross Center
- D. Planned Parenthood
- E. Legal Services of Eastern STL
- F. Goodwill
- G. Salvation Army
- H. Community Garden



CONCEPT STATEMENT:

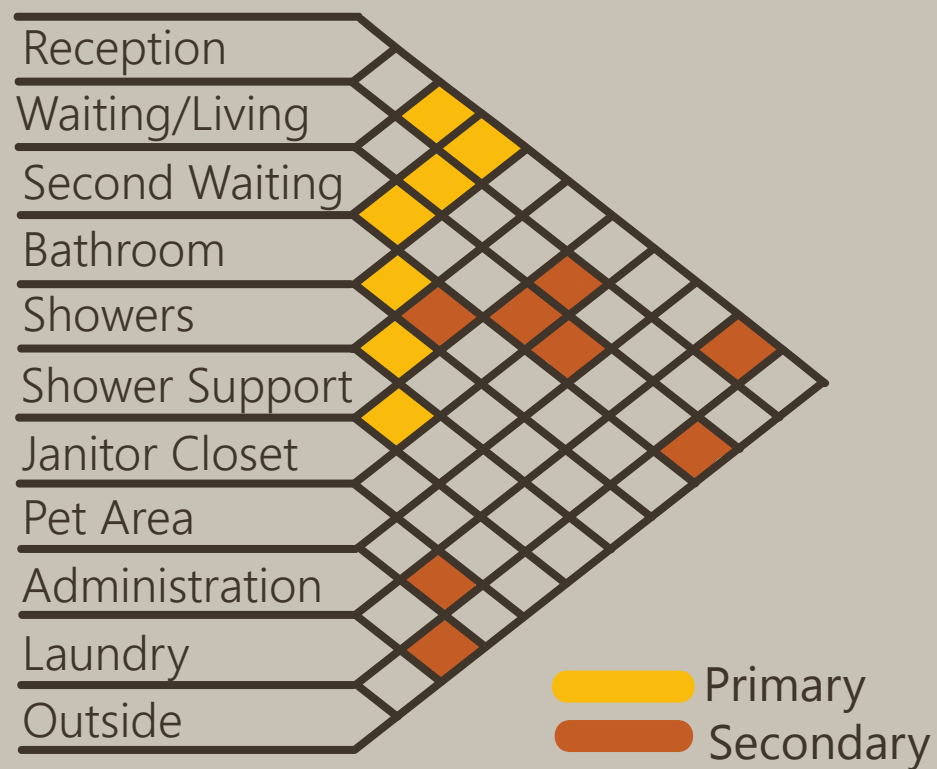
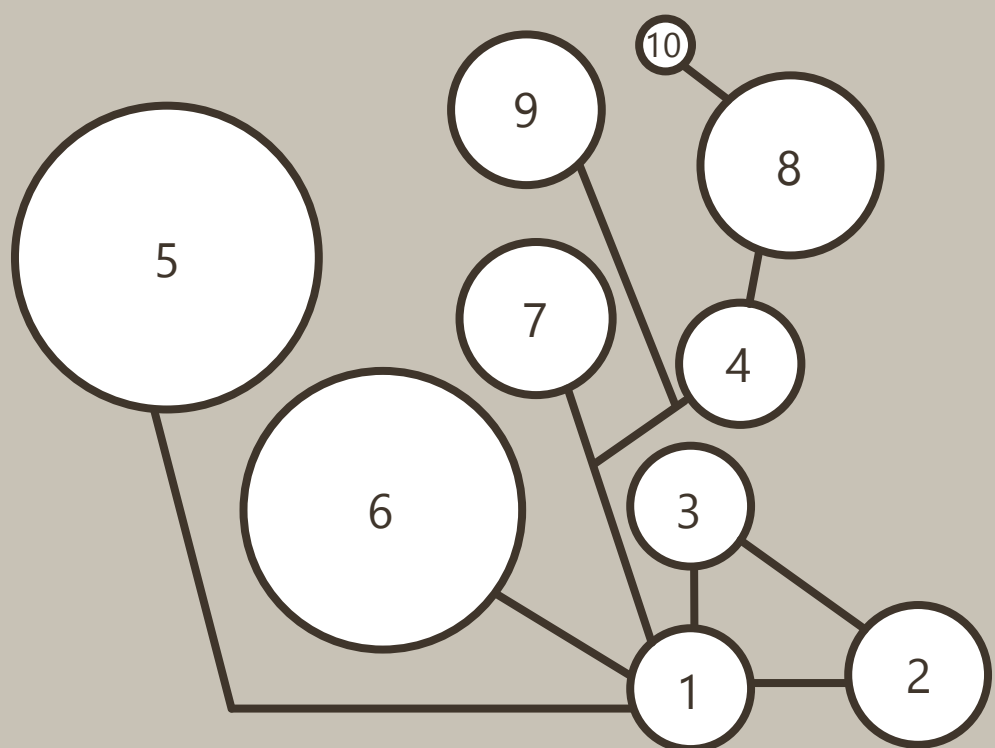
Horizon STL is a Basic Needs Center that provides a **private, safe, and judgment-free** space for people experiencing homelessness in St. Louis, Missouri. Horizon is inspired by the impact **diverse/inclusive** design has on mental and physical health. We pulled inspiration from nature and the local community in order to create a welcoming and **positive environment**. Our center focuses on providing basic hygienic needs and living areas so that individuals can not only better themselves but also their overall well being.

RESEARCH:

For our research we wanted to focus on demographics, and how design impacts people experiencing homelessness. The U.S. Department of Housing and Urban Development states that 544,000 people in American do not have any shelter at night. Out of this 544,000 one-third of them are families. Without shelter, people are exposed to things like weather, crime, and unsanitary conditions. This being said, these types of things can be damaging to one's self-esteem. This involves the idea that recovering from being homeless isn't just finding a new place to live; it is finding confidence in one's self in order to progress towards the future. Our research talked about how physical spaces can actually impact and improve an individual's mood. When designed with the people in mind, shelters can not only help people recover but also become motivated to get back into society. Shelters that are designed with things like warm colors and a welcoming atmosphere send the message to the people that they are cared for and safe. For shelters to have more homely feelings not only helps improve the mental health of an individual but also the physical. When asked, most homeless people say that their physical health is one of the most important things. So, if space is designed to help nurture mental/physical health, and provide basic needs then there will not only be a positive outcome for the individual but also the community.

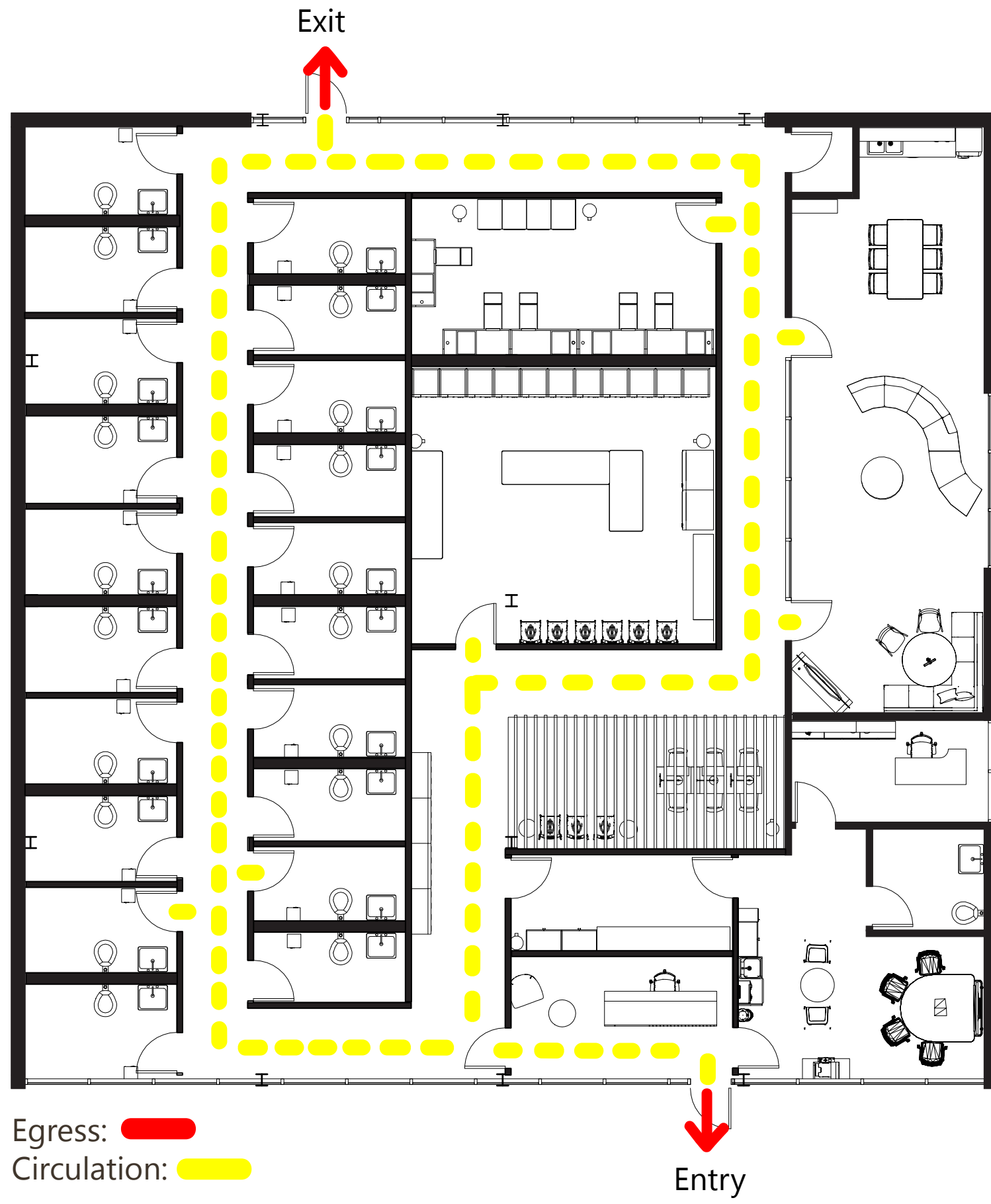
Program:

Occupancy Class- 50 People or less
Classification- Institutional



LOGO:

Our logo depicts a minimalist graphic of a setting sun which reflects the idea of a sun setting on the horizon. We chose the name Horizon STL because we wanted something that sounded welcoming and invoked hope. Also, we wanted something that reflected our mission; which is to help improve people's lives with a space that encourages them to move towards the future.

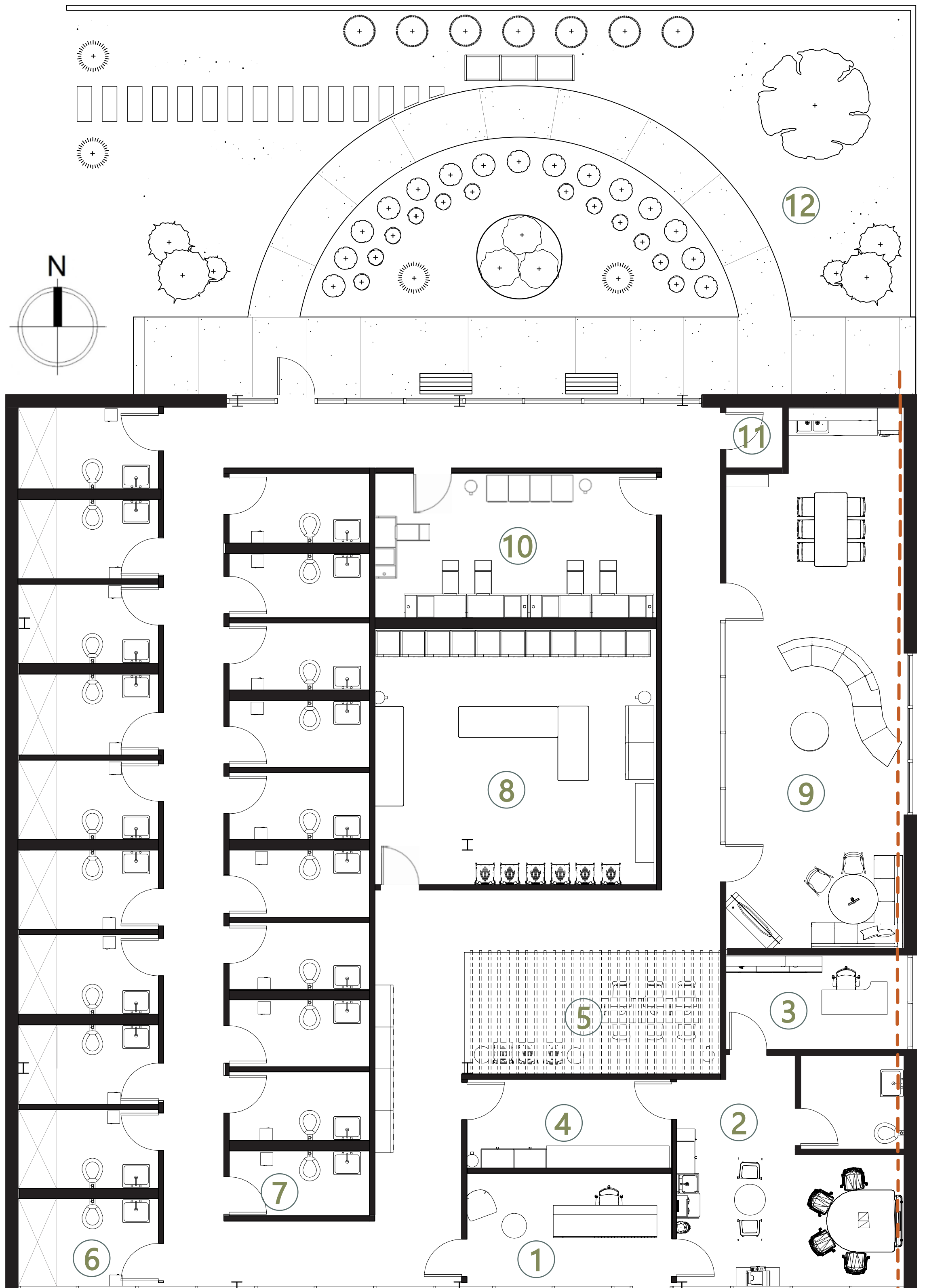


Egress: █
Circulation: █
Total Square Footage:
4380 sq.ft.
Circulation:
20%

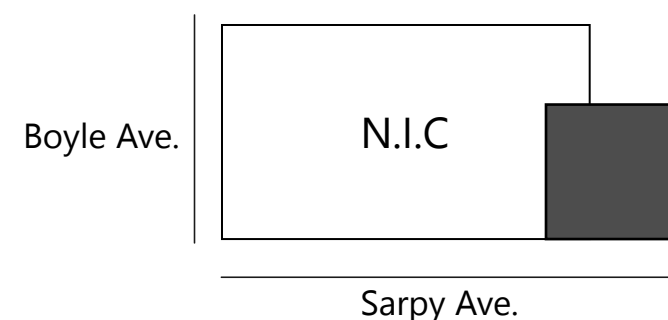
GOALS:

When we started to design the space one of our main focuses was **safety**. Keeping in mind that the reception had to have 24/7 security we decided to shape our floor plan around that aspect. We decided on a racetrack hallway that focuses on one point of entry and exit, which allows for staff to easily monitor and control the space. **Accessibility** was our next concern; the way our hallway is laid out creates its own way finding path which makes it easy for anyone to find their way around without signs or assistance. We did this so that the space felt **unified**, and welcoming to everyone. For **adjacencies** we started with the reception and then branched off of that. We wanted the staff to be able to move "behind the scenes" and have their own space without interrupting the main flow of the facility (which is mainly for the users). We then wanted to make sure that the bathrooms and showers were one of the first things you could access after leaving the reception area. Then, branching off of the bathrooms and showers we made sure that any other spaces that require water were sharing wet walls. We then added the remaining spaces where they seemed to fit the best, while still focusing on the users and flow. The overall space was mainly designed with the user in mind and making sure that everyone feels **at home** in our center.

- 1 Reception
- 24/7 Security
- 2 Administration
- 3 Office
- 4 Shower Area Support
- 24/7 Assistance
- 5 Secondary Waiting Area
- 6 Individual Bath/ Shower
- 24/7 Assistance
- 7 Bathrooms
- 8 Laundry Facility
- 9 Waiting Area/ Living Room
- 10 Pet Area
- 11 Janitor Closet
- 12 Exterior Area
- Secure gate: people with pets can be buzzed in by receptionist for easy access to pet area



Main Floor Plan:
Scale 1/8" = 1'





RECEPTION



WAITING AREA / LIVING ROOM



SECONDARY WAITING AREA



EXTERIOR AREA

COMMUNITY SPACE:

After the normal 8-5 work day, there will be a psychologist that will be available in the office for mental and physical support. We want to be able to give the people of our community a place to go that they will feel safe and free to talk to someone they can trust. Along with that our exterior area is a healing garden for the community and the users of the space. We want people to have a space to enjoy and ease their mind with the beauty of nature. In addition, we also have a garden for people to learn how to grow vegetables/herbs and understand the importance of healthy living.



INDIVIDUAL BATH/SHOWER

* All of our spaces are ADA compliant, and there are lower washer and dryers in the laundry facility to accommodate the code. The appliances are energy efficient to keep the electric bills at a lower cost. We made sure that most of our furniture is modular or movable so spaces can possibly be multi-functional and cleaned easily. *

12



Section: East Wall 1/8" = 1'
Ceiling Height - 15' - 0"

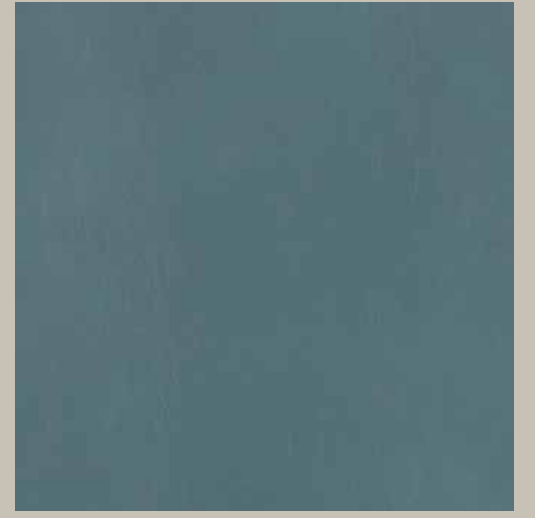
OBJECTIVES:

When picking finishes we made sure that all of our materials were sustainable, easy to clean, and durable. When deciding on our color palette we made sure that it was gender neutral. Also, we wanted to make sure that our color scheme has a positive psychological affect on the brain. We also wanted to bring outside colors in, so not only are our colors inspired by nature, but we also made sure that our exterior area has these color reflected in the plants. In regards to the landscape we picked plants brought in beauty, color, and texture. They also reflect our palette and continue to as the seasons change.

Materials:



MAHARAM: Parquet: Crypton (Antimicrobial, Impermeable, Stain Resistant)



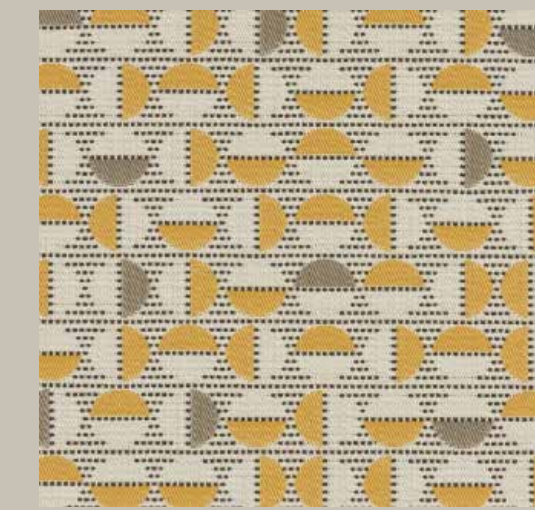
MAHARAM: Chime Crypton (Antimicrobial, Impermeable, Stain Resistant)



FORMICA: Natural Walnut Veneer



DESIGNTEX: Nano Stain Resistant



DESIGNTEX: Tap Nano Stain Resistant



MAHARAM: Kvadrat Felt Acoustical Property

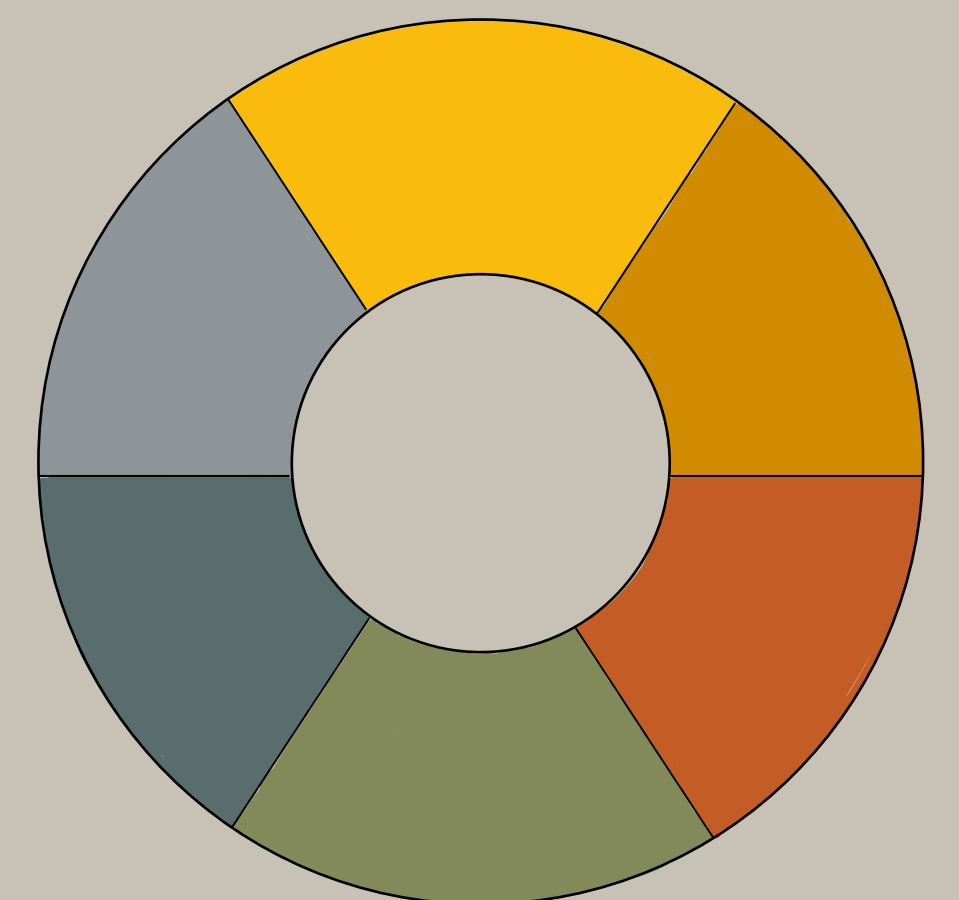


FORMICA: Chrome Yellow Laminate



FORMICA: Espresso Pear Laminate

Color Palette:



Plant List:

- Black maple- **Acer Nigrum**
- Japanese Lilac- **Syringa Reticulata**
- Autumn Moor Grass- **Sesleria Autumnalis**
- Huskers Red- **Penstemon Digitalis**
- Northwind Switch grass (Blue)- **Panicum Virgatum**
- Lamb's Ear- **Stachys Byzantia**
- Burning Bush- **Euonymus Alatus**

Interview: James Stevenson with CSS Landscaping Chicago, IL