

Hive of Hope

Concept

When confronted by the trials of homelessness, feeling connected to others and society suffers. Nature uses an arsenal of natural forms such as hexagons to provide structure. Using this inherently stable form, "Hive of Hope" works to re-establish essential connections to society. The center is designed to develop intricate networks of social engagement aimed at making each individual's 'foundation' become consolidated and stronger; while simultaneously creating a balance between personal time and connection with others.

The Importance of Biophilia

A major guiding principle in the design of this space was the notion of biophilia. As defined by *Architect Magazine*, "biophilia is the urge for humans to affiliate with other life." Biophilic design is proven to improve physiological and psychological health. This is of utmost importance in the context of serving those experiencing homelessness as they often face emotional and mental battles.

The four key components of biophilia utilized in this design are as follows:

- 1. Natural Light** - skylights provide natural light to increase positive emotions and creativity
- 2. Patterns** - Similar to those seen in nature, hexagons are used in the architecture and details of the space to convey structure, connection, and strength.
- 3. Minimally Processed Materials** - The use of bamboo creates a connection to the natural world.
- 4. Indoor Plants** - Living walls improve the air quality of the space and create a comfortable atmosphere.

Interaction vs. Isolation

Experiencing homelessness is often coupled with a sense of isolation. While privacy is an essential to human development and personal growth it must be balanced by ample time connecting with others. According to IDEC Design Award winner Jill Pable of Florida State University, "among the most impactful aspects of environments for the home-less are psychological ramifications that encompass issues of personal space, territoriality and the spatial nature of human social interaction."

Materials & Finishes

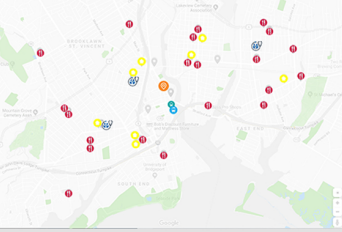
Each material was carefully chosen to evoke a sense of comfort and encourage interconnection.

- Xosra Wheat Bamboo Floor from Teragren LEED v3 Certified**
The use of bamboo flooring provides a warm, aesthetic with the qualities of a extremely durable and sustainability sourced material.
- Maharam Sari Grass Wallcover**
PVC Free, FR Free, Non-Flammable
The color and texture of this material appear as though they are directly from nature yet provide necessary durability.
- Steelcase Bronco Wheat**
Designed to last, Bronco Wheat is capable of withstanding 24/7 traffic and wear and tear.
- Fireclay Redbody White Gloss Tile**
Company Value- Tread Earth Lightly
- Fireclay White Gloss 6" Hexagon Tile**
The use of hexagon tile continues the symbolism of structure, strength, & connection.
- Sherwin Williams Vigorous Violet**
This color choice is intended to soothe the occupants of the space.
- Polished Concrete**
Provides a balanced contrast to natural elements.

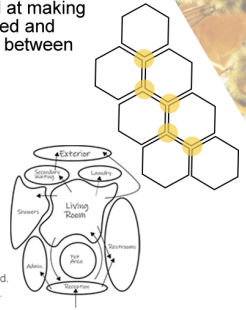
Location

"On the night of January 22nd, 2019, Bridgeport counted 278 people experiencing homelessness." From the survey conducted by CT Point in Time Course in 2019.

With close proximity to the train station and a well developed bus system, this location is ideal for serving not only Bridgeport but also Stamford and New Haven, two nearby cities with high rates of homelessness.



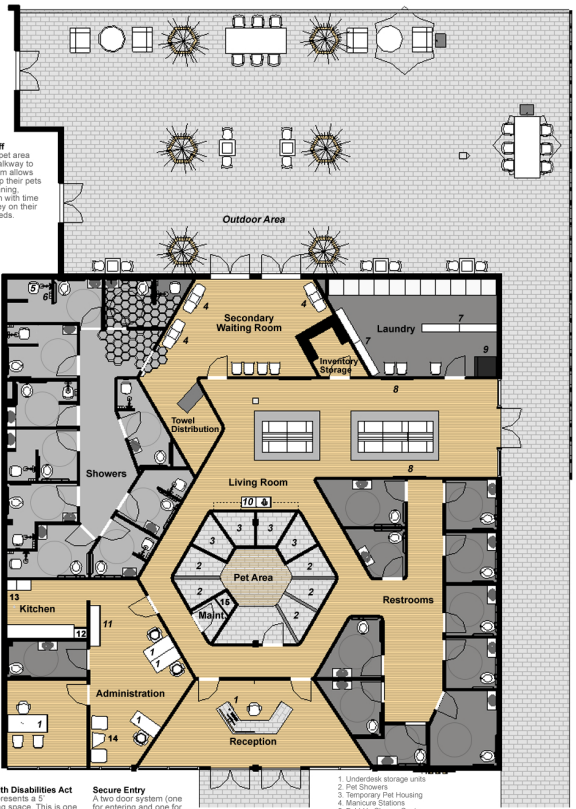
- Map Legend**
- Food
 - Housing
 - Train Station
 - Bus Station
 - Medical Facility
 - Hive of Hope Location



The Symbolism of Hexagons
When placed together, hexagons create a structurally sound form by linking like puzzle pieces. "Hive of Hope" symbolizes this point of connection by providing a space to focus on the basic structures of life and to bring people facing similar hardships together.

Inviting the Guest In
The change in flooring bleeds out into the secondary waiting room, inviting guest into a private homelike environment.

Creating a Comfortable Exterior
An outdoor green wall, composed of hexagons continues the concept of the design, acts as a warming element, and provides privacy from the street.



Americans With Disabilities Act
Each circle represents a 5' diameter turning space. This is one of the many factors that allow each restroom and shower area to adhere to ADA requirements.

Secure Entry
A bi-door system (one for entering and one for exiting) allows for the receptionist to control who enters the facility.

1. Underdesk storage units
2. Bed Shower Housing
3. Temporary Pet Housing
4. Makeup Stations
5. Fold-Up Shower Seats
6. Soap Dispensers
7. Folding Tables
8. Televisions
9. Deliantent Vending Machine
10. Coinc. Station
11. Printing/Copy Area & File Storage
12. Staff Lockers
13. Pantry
14. Lounge Seating
15. Floor Sink

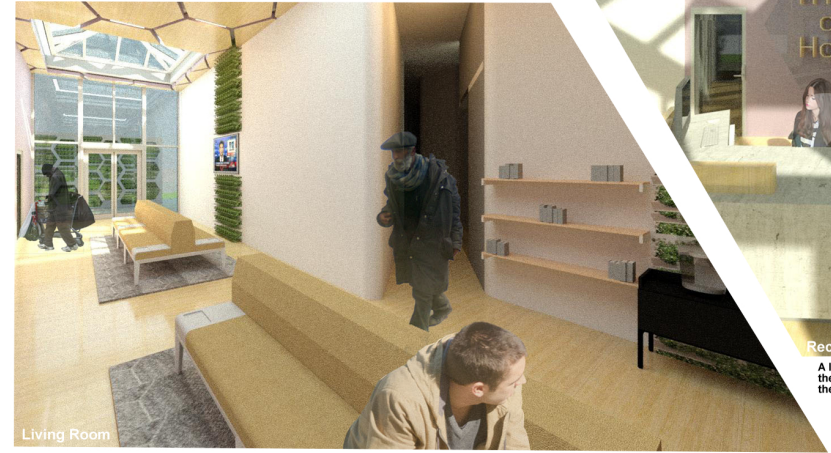
"It's about hope and dignity for all who enter. A strong sense of connection is crucial to that."



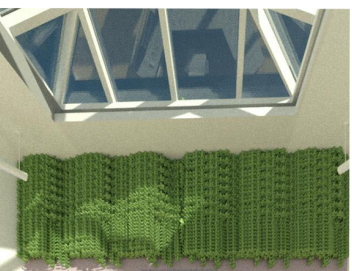
"The people we serve, nobody really treats them with dignity and they certainly don't live lives filled chuck-full of hope."

From an interview with Kim Fawcett, Bridgeport Rescue Mission

Skylights provide natural lighting to create an uplifted feeling throughout the space.



Living Room



Hive of Hope

Reception

A living wall welcomes guest letting them know this is a place where they can openly grow.

The outdoor space consists of multiple group seating areas, encouraging interconnection.



Outdoor Area

A unique approach to the glass exterior facade allows for proper function of the forefront bathrooms while simultaneously creating an aesthetically pleasing location for signage.



Front Facade



Showers

Each shower unit is simple yet pleasant with a touch of soothing green and playful floor tiles.