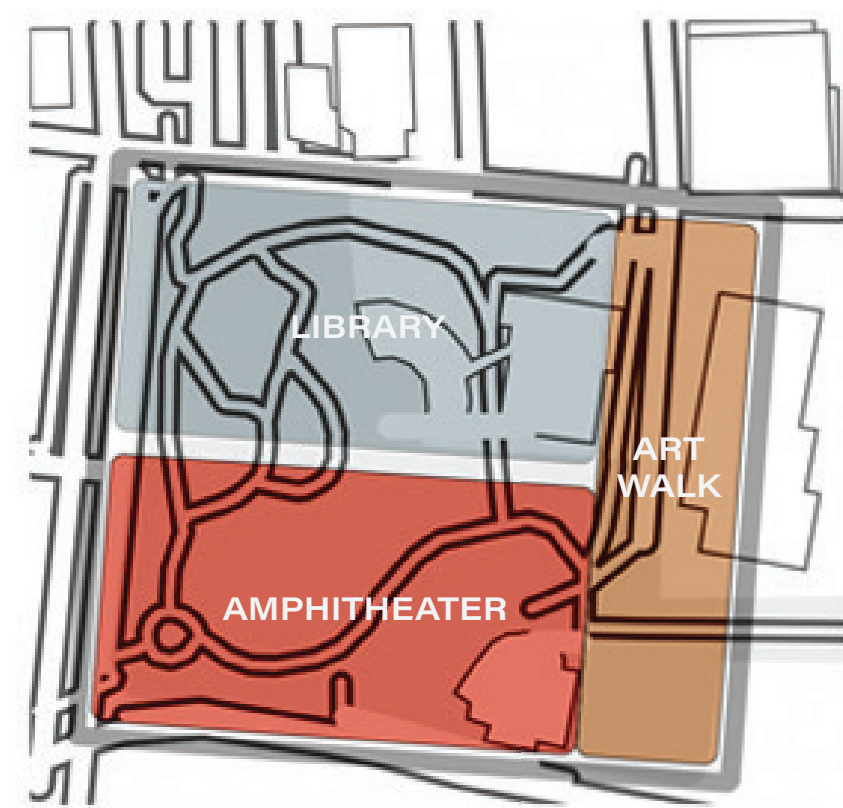


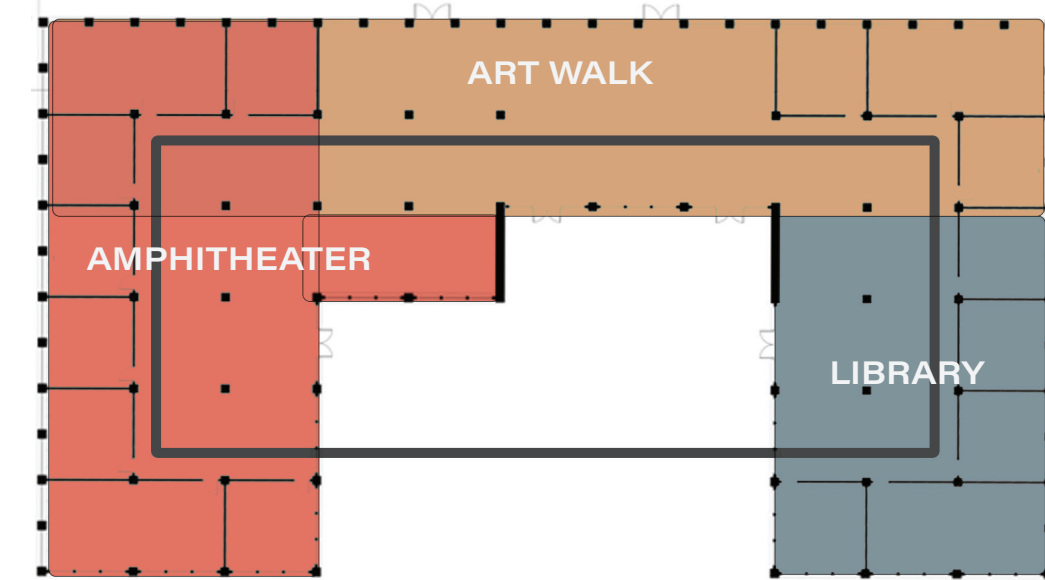


In 2018, over 1.7 million veterans who were treated at a VA hospital suffered from some mental illness such as PTSD, depression, or anxiety. (Mental Health) Elmwood park and Art Walk is a heart in the Roanoke community that joins people with each other, nature, and creative expression. The design for Hero Park: Living United brings the elements of Elmwood Park indoors, creating an urban street interior that focuses on promoting social sustainability and focusing on community as a means of support as Veterans live and grow post service. The Patrick Henry site was chosen due to its walkable proximity to the local Veterans' Services Building, the Carilion Clinic, and Elmwood Park, which provides views for the interior.

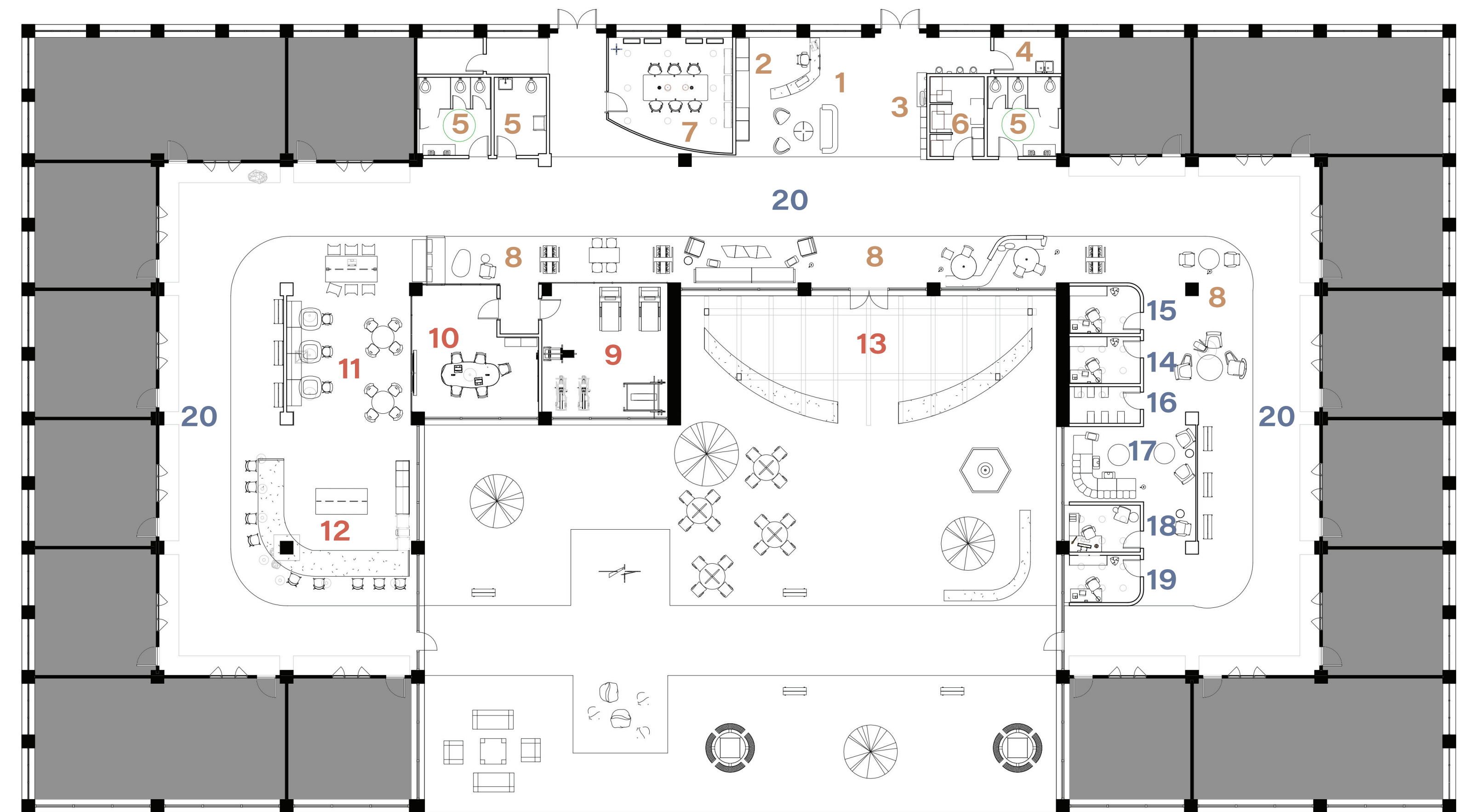
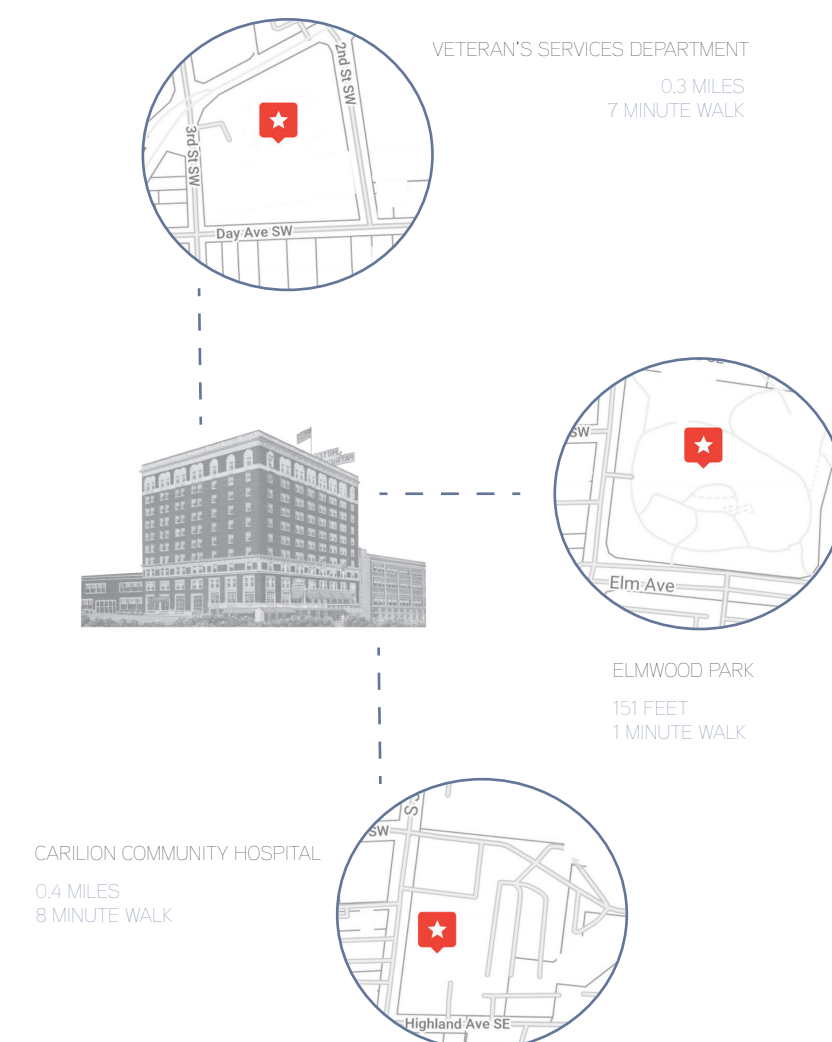
Spatially, the central focus is the **circular path** that provides opportunities for resident connection, provides an indoor track for exercise and wellbeing, and transitions into an outdoor art walk and farmers' market that brings the social sustainability focus to life. The central community areas are surrounded by two story facades that take on a traditional row house feel, with a ground level stoop for residents who crave interaction while also containing a second floor balcony for those who want more privacy.



Elmwood Park Map with Highlighted Zones



Elmwood Park Parti in the Space



FLOOR PLAN  
N.T.S.



Perspective of the Cafe

ZONES:

**ART WALK**

1. RECEPTION DESK
2. MAIL STORAGE
3. SANITATION STATION / MAILBOXES
4. JANITOR'S CLOSET
5. RESTROOMS
6. LACTATION ROOM
7. MEETING ROOM
8. MULTI-PURPOSE COMMUNITY SPACE

**AMPHITHEATER**

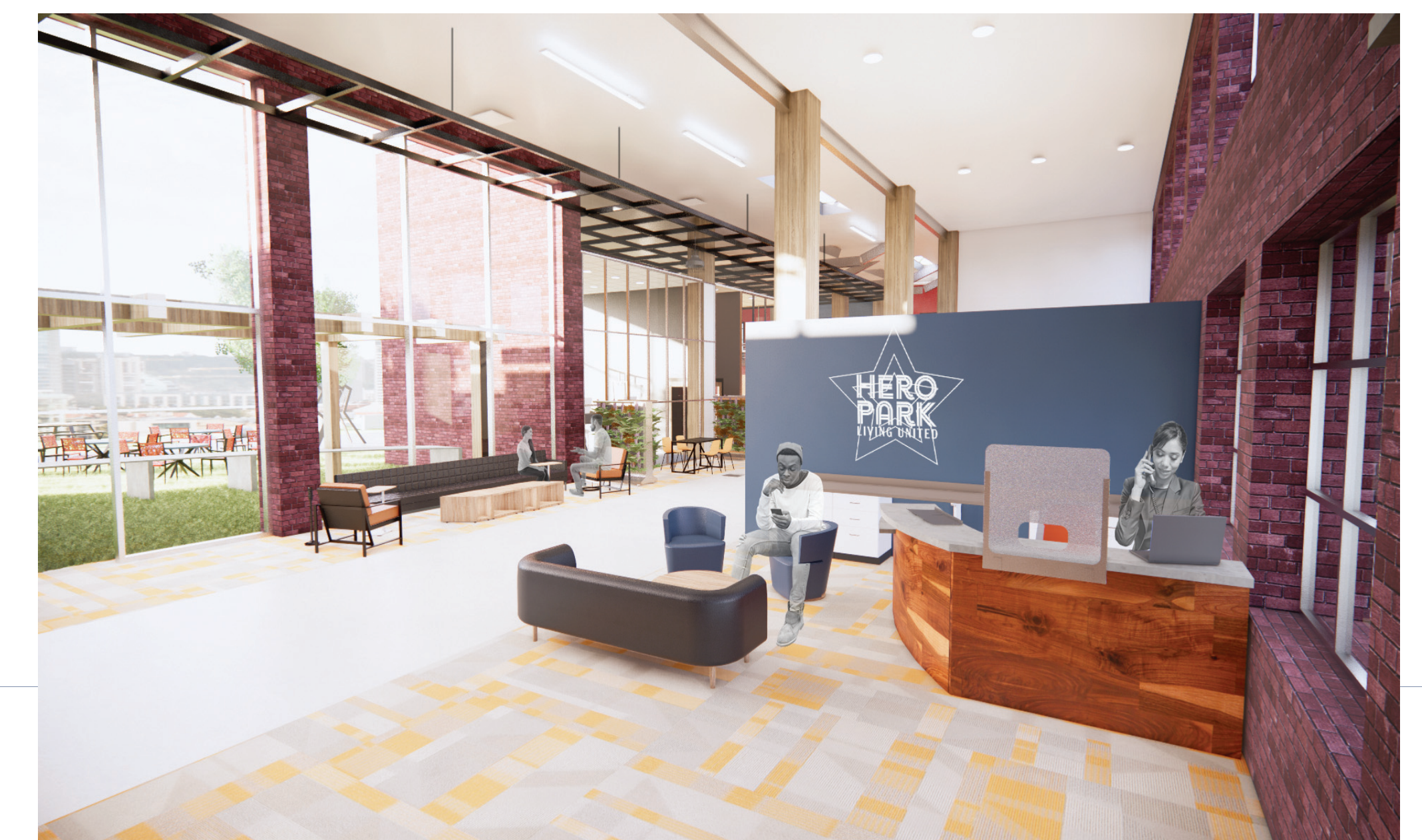
9. GYM
10. FLEX SPACE
11. COMMUNITY SPACE
12. KITCHEN CAFE
13. FARMERS' MARKET

**LIBRARY**

14. ADMINISTRATIVE ASSISTANT OFFICE
15. BUILDING MANAGER OFFICE
16. COPY / FILING ROOM
17. RELAXATION ROOM
18. COUNSELING CENTER
19. MANAGER OF VETERAN SUPPORT OFFICE
20. INTERIOR STREET PATH



Inclusion in Societies  
Creating Opportunities for All  
Supporting Others  
Creating Resilient Societies  
Environmental and Social Framework  
(The World Bank)



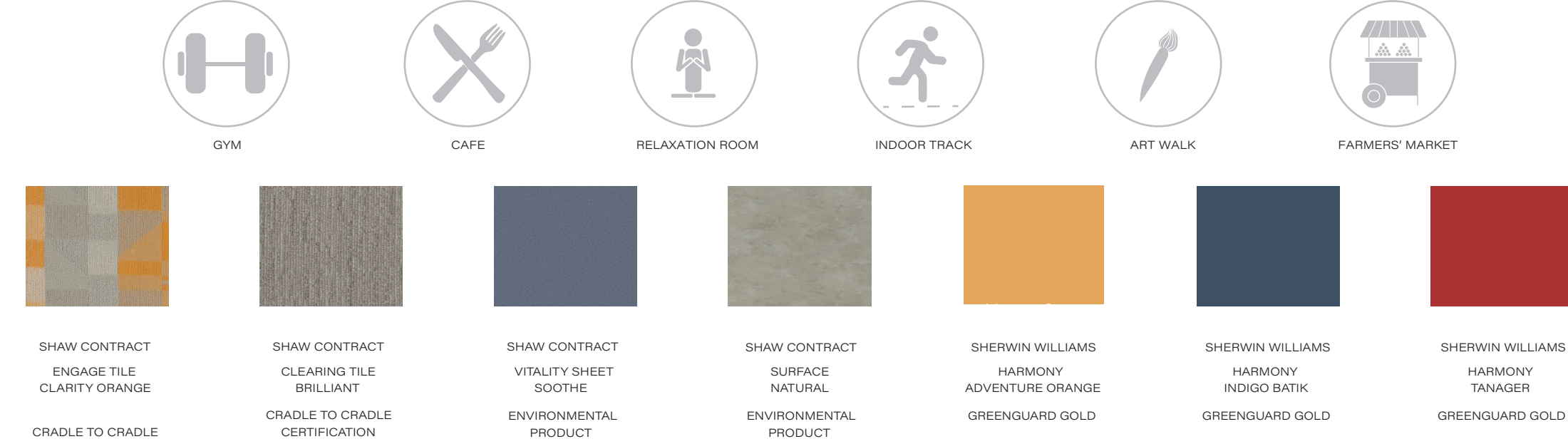
Perspective of Reception and Lounge



Perspective of the Cafe from the Balcony View

## AMENITIES AND MATERIALS

The amenities within the space are highlighted by the below symbols. The symbol of a person running represents the indoor track that encourages residents to practice a healthy active lifestyle. The paintbrush symbol represents the outdoor art walk that connects the community, while also pushing residents to pursue creative endeavors as a means of positive mental health support. The food stand symbol represents the farmer's market that gets residents outdoors, connects to the greater Roanoke community, and inspires a healthy diet. The weight symbol represents the gym, which forms a community of individuals around maintaining a healthy physique. The meditation symbol represents the relaxation room where users can go to take a break or calm down before or after therapy, or if they find themselves in a high stress situation and need a break. The material and finishes in the space further the design color palette while keeping with the concept of bringing the park indoors as a means of fostering connections. To reflect the industrial nature of downtown Roanoke, as well as that of the Patrick Henry building, materials such as wood, concrete, brick, and steel were incorporated throughout the space. These hard materials are balanced with colorful patterns and finishes that serve as a means of wayfinding, by creating easily distinguishable landmarks in the space. To reinforce the focus on social sustainability, materials used in the space all possess some form of environmental sustainable recognition or materials; they also all have long life cycles, which improves the economic sustainability of the space. The goal is that by promoting social sustainability in multiple layers within the community spaces, over time, residents will adapt and reflect the same principles in their private residential spaces. (The Young Foundation)



Perspective of the Sanitation Stations and Mailboxes



Perspective of the Front Part



INTERIOR ELEVATION OF RESIDENTIAL FACADES  
N.T.S.

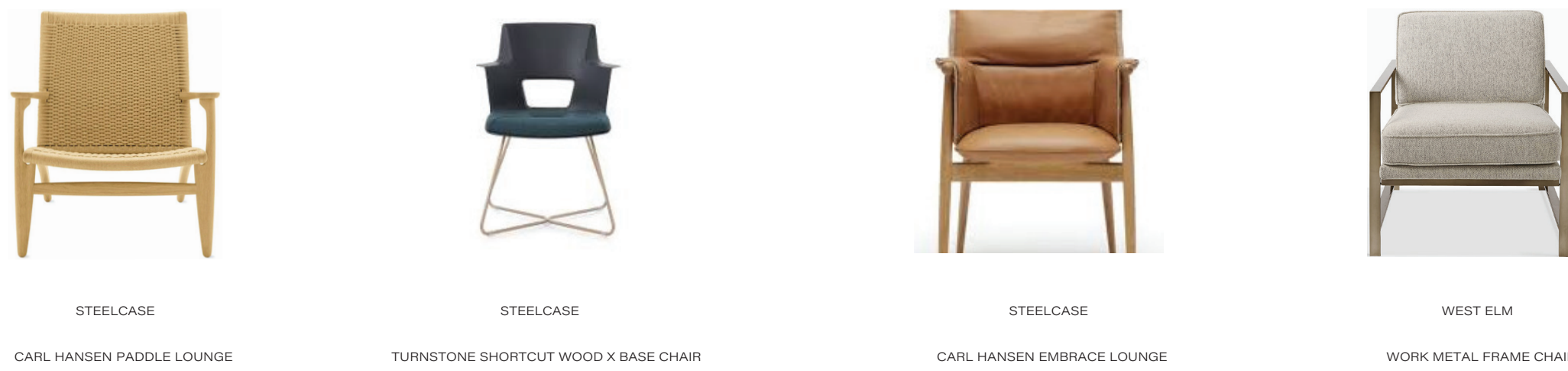
Experientially, we focused on drawing color inspiration from a Roanoke sunset and incorporating soft hues of blue and red to create a calming atmosphere that represents the different branches colors and is kissed with pops of orange. Our plan is for Hero Park is for it to become a community focused on uniting residents and creating an indoor neighborhood whose impacts overflow into the greater Roanoke community. The facade of the front of the residential units consists of a door and window on the lower level and a door and a balcony on the upper level. The window helps to connect the users to the outer path area so they are able to look out the window and see their neighbors and community members. The balcony gives the users a more privacy by still being enclosed in their homes. However, they are still able to speak to their neighbors on their left and right as well as look over the balcony and see what their community members are doing below. The facades rotate colors so users are given a more unique and individualized home. The design elements remained simple so that residents could personalize their balcony and stoops to best meet their wants and needs.



Perspective of the Relaxation Room

## FURNITURE SELECTIONS

Due to the multiple generations present within the space, a wide variety of seating options were selected. Since an aging demographic is prevalent among the veteran community, all pieces are similar in that they provide arms to push on to help one with standing up and sitting down.



Resonance  
Bauer, Barbara E. "The Serotonin Receptors: Comparing the Binding Affinity of 5 Psychedelics." *Psychodelic Science Review*, 8 Jan. 2020.  
psychedelics.com/the-serotonin-receptors-comparing-the-binding-affinity-of-psychedelics/  
Chan, Brian and Brian Chan-Brian Chan is the Managing Diversity & Inclusion Advisor (Chief Diversity Officer) at University Social. Brian has years of experience working at Fortune 500 companies in diverse environments and building diverse teams in Asia. Social Sustainability - Everything You Need to Know. Best of Diversity and Inclusion - The Definitive Portal Site | University Social, 28 Dec. 2020.  
diversity500.com/social-sustainability/  
Cradle to Cradle. "Intergenerational Thinking | Nature 2017." *The Cradle to Cradle*. Archived 21 June 2020.  
www.cradletogether.com/0408568a-zwdf-plus-plus-intergenerational-thinking-eric-civic-lead-ecocasearch  
Lynch, Andrew. "Whispering House Social Hub | Coody Architects." *ArchDaily*, 30 July 2020. [www.archdaily.com/943778/whispering-house-social-hub-coody-architects](http://www.archdaily.com/943778/whispering-house-social-hub-coody-architects); [www.medicalnewstoday.com/articles/232548](http://www.medicalnewstoday.com/articles/232548).  
Sokolom, Jacek. "Lush, Soothing and Soothing: Medical News Today." *Medical News Today*. [www.medicalnewstoday.com/articles/232548](http://www.medicalnewstoday.com/articles/232548).  
Solutions, Aelia. 2020. "What is Social Sustainability? Advice and Inspiration." <https://www.worldebank.org/en/news/feature/2020/09/02/five-things-about-social-sustainability-and-inclusion>.  
<https://www.socialeconomy.com/2020/09/02/five-things-about-social-sustainability-and-inclusion>.  
gn-characteristics-or-elements-of-community-building?text=The%20members%20of%20a%20community%20are%20other%20things%20as%20observed.  
<https://www.researchgate.net/publication/351111111>



Perspective of the Outdoor Area, Farmers' Market, and Art Walk



Perspective of the Gym