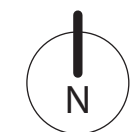


h: EARTH

YOU ARE HERE



THE SITE

Puritas Ave. and Rocky River Dr., Cleveland, Ohio

WALKING DISTANCE

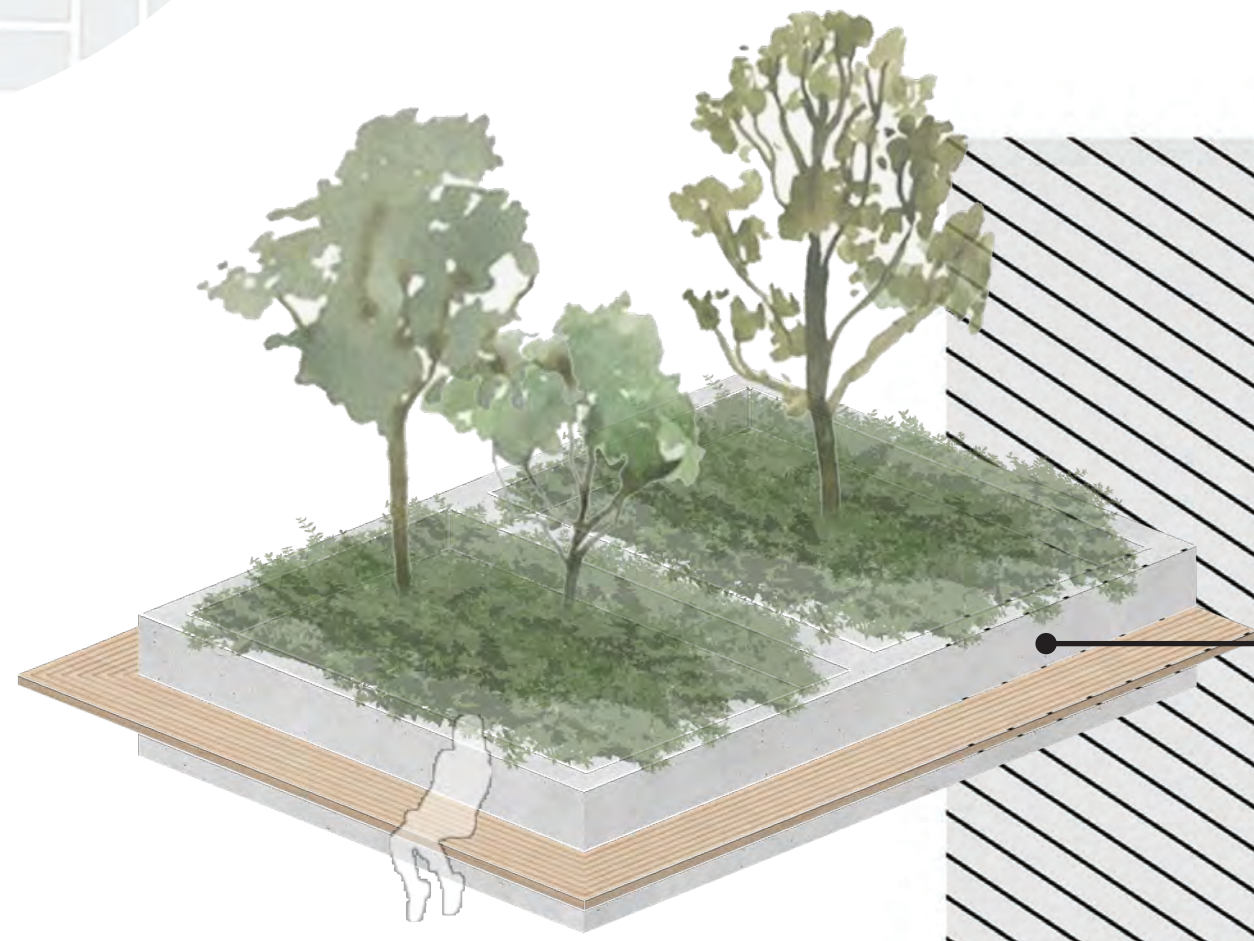
- Laura's Home Women's Crisis Center
- Cuyahoga Housing Authority
- Cleveland Fire Station

2 MILES

- USO of Northern Ohio
- The Center for Families and Children
- Cottonwood Reserved Shelter

5 MILES

- Middleburg Heights Food Pantry
- Salvation Army
- Meals on Wheels



WHO IS EXPERIENCING HOMELESSNESS IN CLEVELAND?

SINGLES

African American	71%
White	24%
Latino	4%
Other	1%



FAMILIES

African American	82%
White	9%
Latino	6%
Other	3%



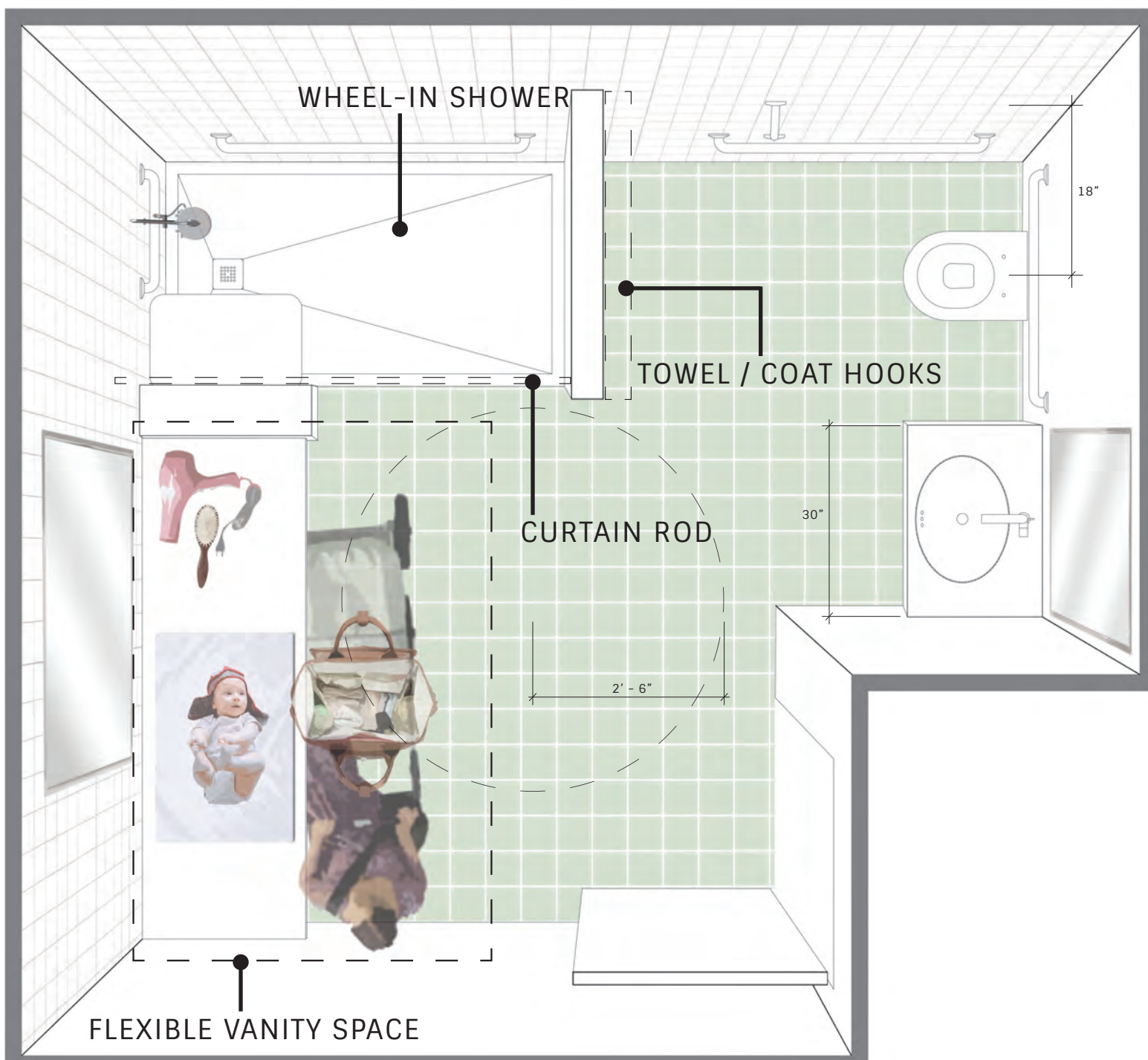
GROUPS

Family Households	82%
Vets	7%
Chronic Homelessness	6%
Young Adults	5%



Reported by the HUD as of January 2018, Ohio has an estimated 10,249 people experiencing homelessness on any given day. Cleveland, Ohio is the sixth poorest city in the United States and has seen a 25% increase in homelessness since 2015. Although these statistics alone are staggering, the graphs above further reveal dangerously off-balance demographics of people experiencing these struggles. The reality is harsh but it must be acknowledged with clarity: the epidemic of homelessness is greatly influenced by the unjust racial bias that exists within the political and social structures of society at large. In order to seek improvement, we must seek reform.

As a contribution to reform, this design solution was crafted with the utmost consideration for inclusivity and diversity. Additionally, special attention was paid to providing families with adequate space and resources to care for their basic needs.



ENLARGED SHOWER + GROOMING SPACE

RECLAIM SPACE | RESTORE BELONGING

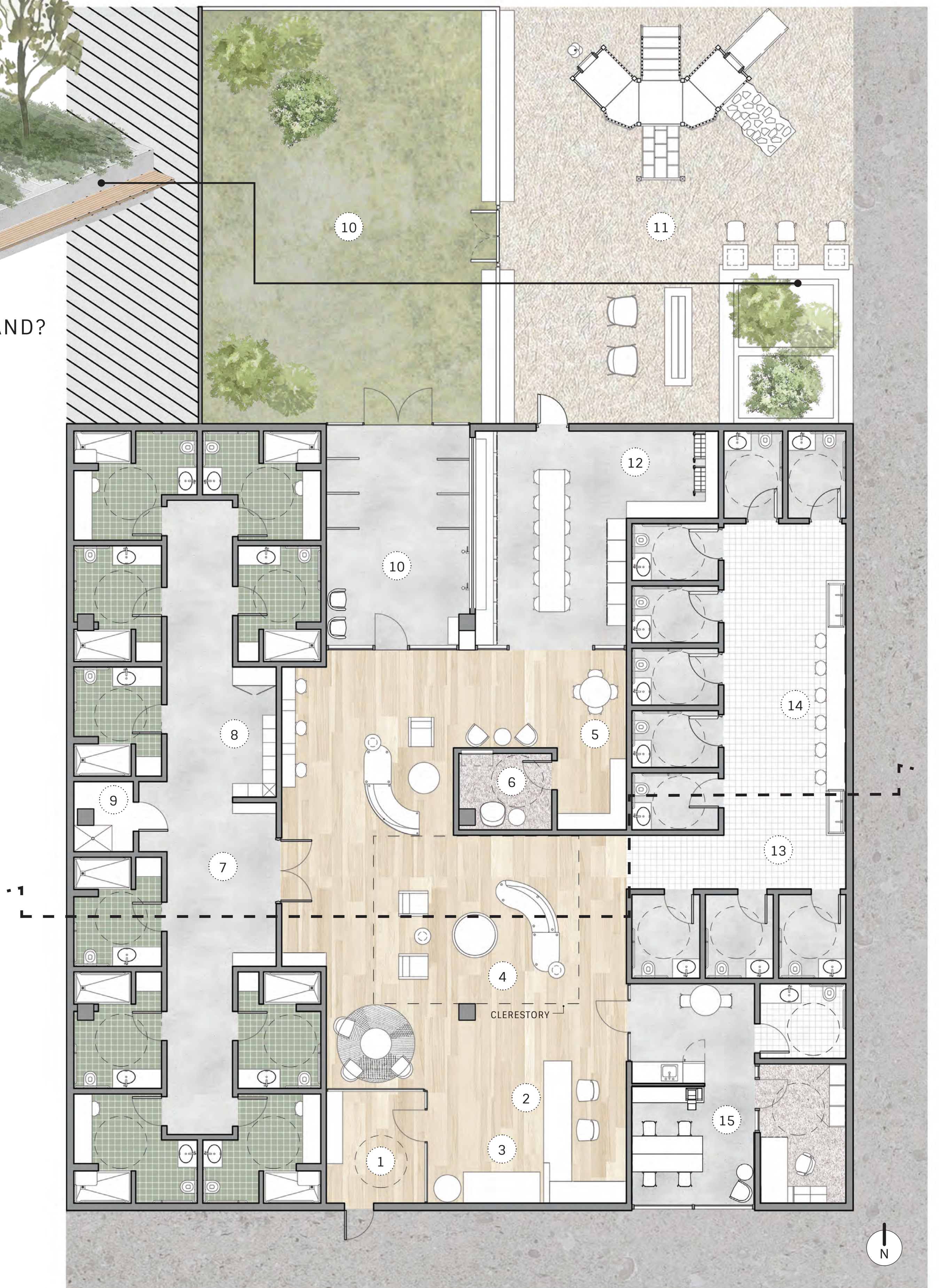
DESIGNERS' CONCEPT STATEMENT DERIVED FROM CHRISTIAN NORBERG-SCHULZ'S "GENIUS LOCI: TOWARDS A PHENOMENOLOGY OF ARCHITECTURE."

Place is defined as the totality of concrete things that makes up the distinct space where life occurs. A lack of sense of place may be experienced by those who feel stripped of their basic human rights to safety, privacy, and dignity. An interior solution that seeks to help those in need through physical orientation, self-identification, and provided opportunities for control is one that empowers its users to reclaim their sense of place and belonging.

THE FACADE: FAVELA PAINTING OUTCOMES

Favela Paintings began as an approach to restore pride and hope to communities that experience poverty and challenging times. Grounded on the principle of creating a more inclusive world, Favela has grown into both a Foundation and Academy that use art for social change.

Favela Painting projects can be thought of as "organic global art interventions" that engage the local community and create multifaceted impact. Although the murals may attract positive attention through bold and uplifting graphics, the emotional value of Favela Paintings is undeniable. The Favela Paintings website explains, "The artworks are a huge impulse to local pride enterprise, perceived safety and sense of community. Residents are prouder, happier and feel more connected."



PLAN

- | | | | |
|--|---|---|---|
| <p>1 SECURE ENTRY
exterior welcome mural
buzz-in entry
hazardous items storage</p> <p>2 RECEPTION
check-in desk
adjacent to admin. suite
file storage</p> <p>3 COFFEE BAR
free coffee + tea</p> | <p>4 LIVING ROOM
furniture for families + individuals
centralized waiting location
hearth feature</p> <p>5 KIDS CORNER
toy + book storage
sight lines to laundry facilities</p> <p>6 MOTHERS ROOM
changing table
lounge chair for nursing</p> <p>7 SHOWER SUITE
towel / toiletry distribution</p> | <p>8 SHOWER SUPPORT
towel + toiletry distribution
inventory storage
lockers</p> <p>9 MAINTENANCE
floor sink</p> <p>10 PET AREA
secure entry
fenced-in "backyard"</p> <p>11 PATIO + PLAYGROUND</p> | <p>12 LAUNDRY ROOM
sight lines to pet area
sight lines to kids corner</p> <p>13 RESTROOMS
10 accessible rooms</p> <p>14 MANICURE STATIONS
additional sinks for grooming
movable stools</p> <p>15 ADMINISTRATIVE SUITE
work stations + copy / print
director's suite</p> |
|--|---|---|---|



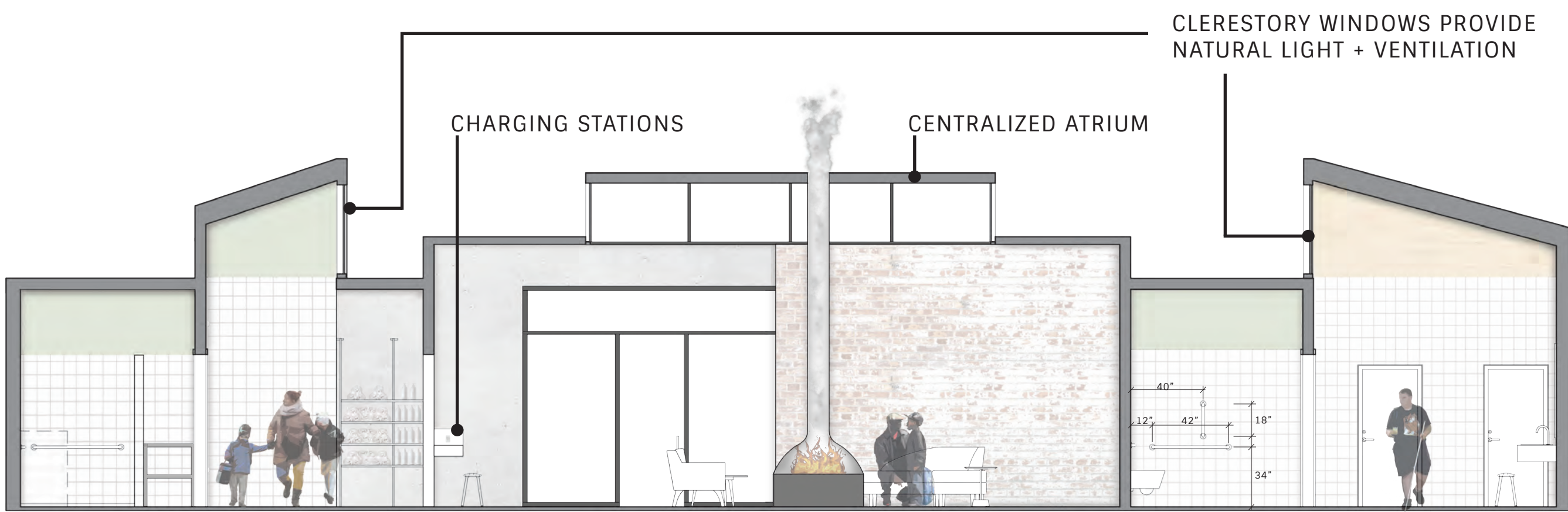
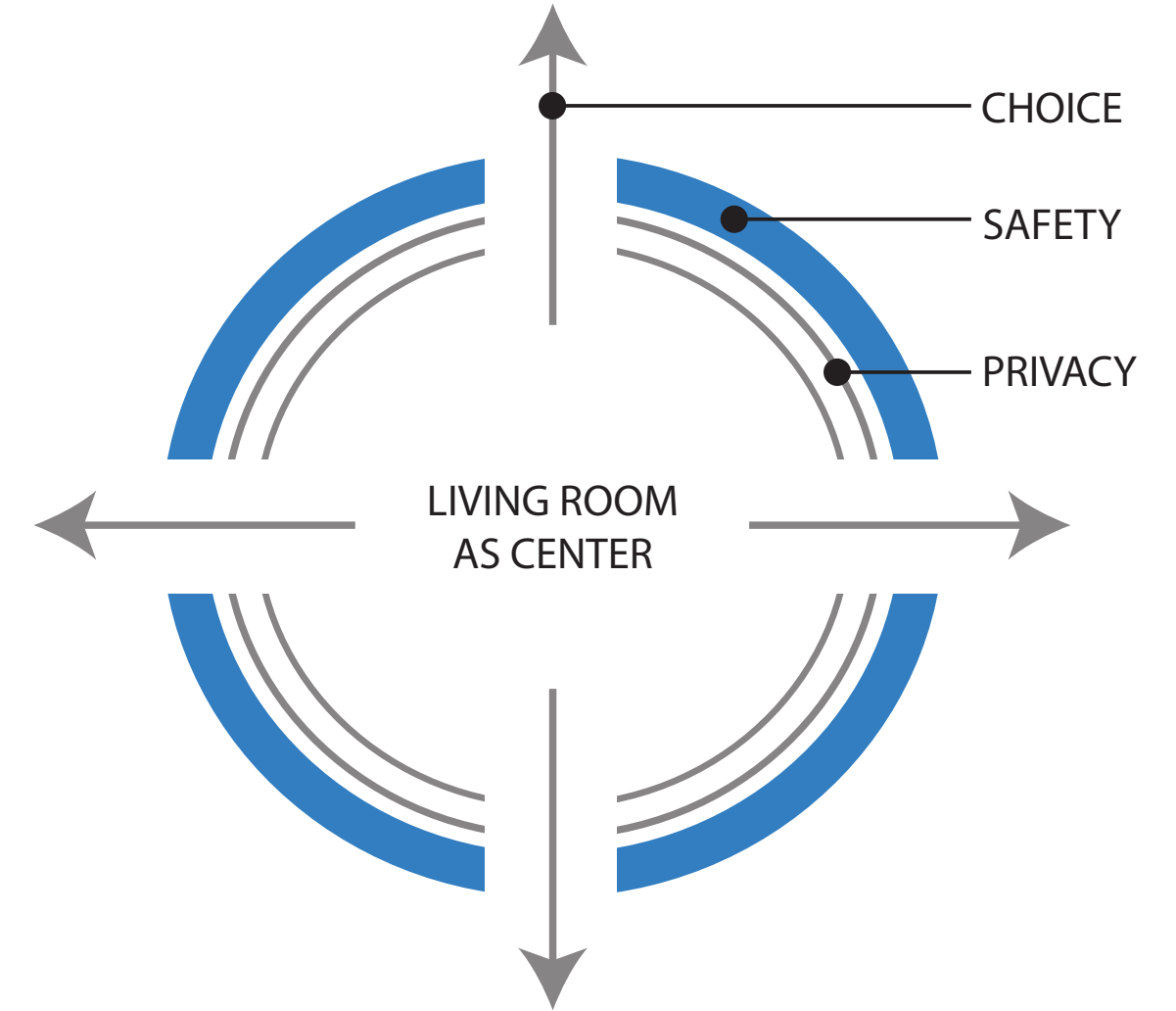
LIVING ROOM

THE HEARTH

/hārTH/: a symbol of one's home

h:EARTH is a basic needs center for those who are experiencing homelessness. Its mission is to provide any person with the space and tools to access privacy, safety, and choice. Although not a home, h:EARTH maintains residential characteristics to help its users orient themselves and identify with its space, therefore reclaiming their dignity within the built world. Here, users are welcomed by warmth and made to feel like they belong.

In the diagram, the centralized living room is not only the symbol of place, but a platform for choice. Each axis extending from this symbol represents an opportunity for users to make dignified decisions in a safe environment.



SECTIONAL ELEVATION

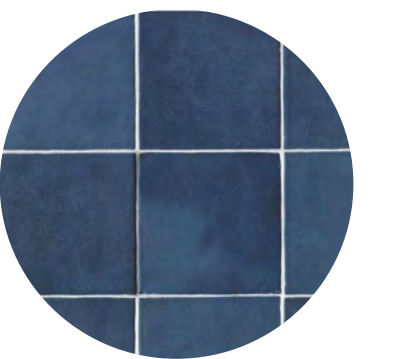
MATERIAL SELECTIONS

The Finish + Materials color palette was crafted to follow earth tones with subtle pattern and texture. Grounding tones in red brick and rich blues compliment airy shades of green and white to establish balance and serenity.

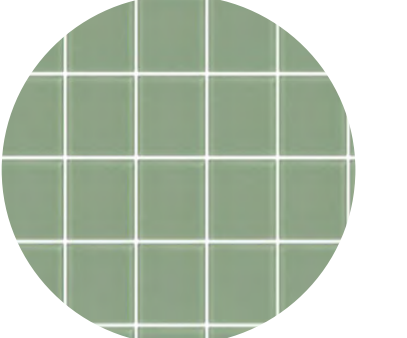
Hard finishes were selected to contribute to a durable and cleanable interior that will function 24 hours per day.

All tile selections are polished porcelain. Non-tile walls in wet locations are Wolf Gordon Scuffmaster paint (7,200 Scrubs, in accordance with ASTM D2486, water-based polyurethane-acrylic).

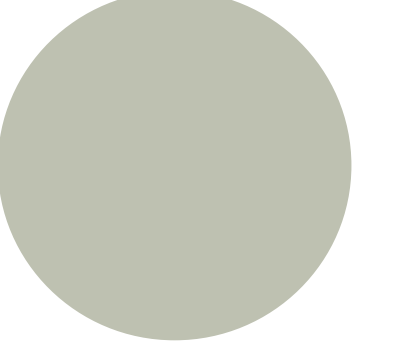
Flooring finishes consist of tile, polished concrete (pet + laundry facilities), or Shaw Contract Innate + In Tandem BioBased Polyurethane sheet flooring with welded seams.



50% Recycled Content
100% Lead-free
Wet Environments



50% Recycled Content
100% Lead-free
Wet Environments



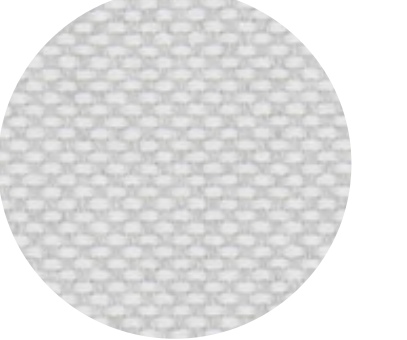
7,200 Scrubs
Water-Based Polyurethane
Acrylic



Resilient Flooring
Green Guard Certified



100,000 Double Rubs
PFOA-Free Stain Resistant
W/S/B Cleanable
Green Guard Gold Certified



70,000 Double Rubs
PFOA-Free Stain Resistant
S-Cleanable
Green Guard Gold Certified

PROGRAM AMENITIES



LAUNDRY FACILITIES

- vending machines for free laundry supplies
- laundry carts
- folding tables
- access to outdoor patio (control)
- adjacent to kids corner and mothers room (safety)
- sight lines to pet waiting area (orientation)



PET AREA

- pet grooming supplies
- washing + grooming station
- temporary pet storage (safety)
- waiting space
- access to a gated outdoor area (safety)



RESTROOM + BATHING FACILITIES

- private universal bathing and restroom units (privacy)
- all accessible cubicles
- generous circulation +space for carts and belongings (identification)
- select enlarged shower units for families (identification)
- manicure + grooming stations



LAUNDRY ROOM



PET AREA



RESTROOMS