

Heart of Hozho

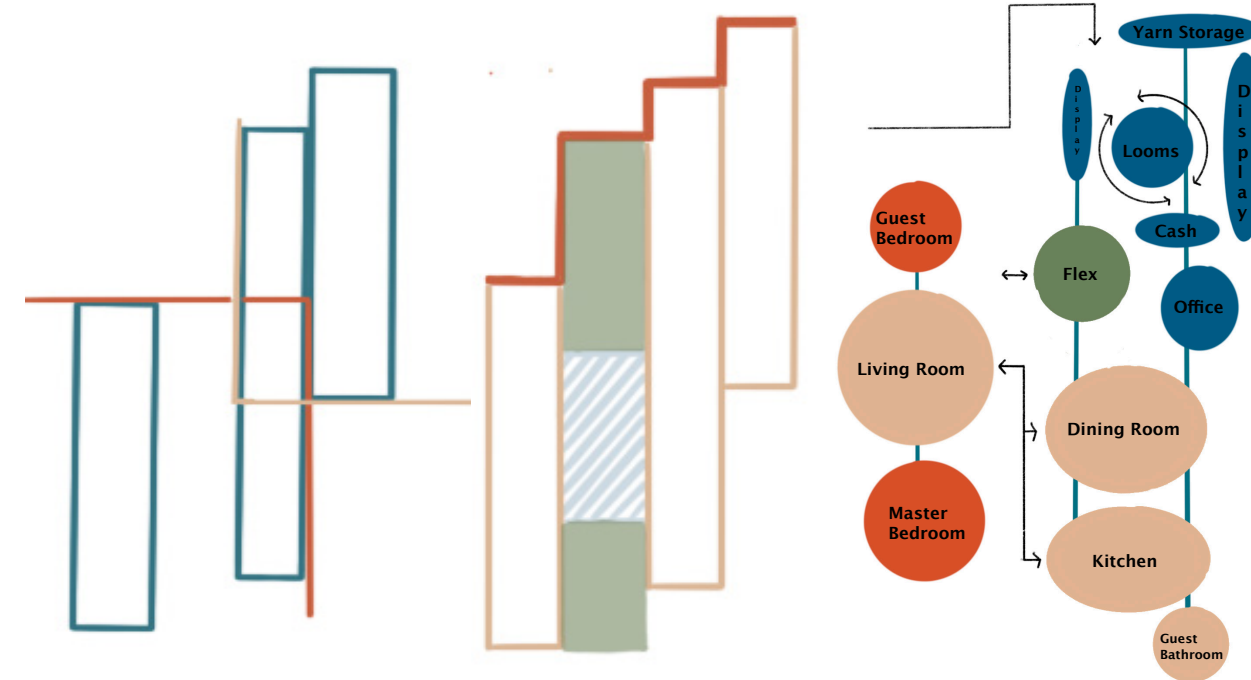
Design Concept

Hozho: a sense of **harmony** and **balance** with one's surroundings. (9)

This space relies on the usage of symbiotic relationships to create a balance between the live and work environment. Arranged in weaving patterns to reflect the culture of the Navajo textile artist, these spaces mutually benefit each other and establish a sense of Hozho. Symbiotic relationships within Heart of Hozho can also be seen between culture and community, interior and nature, and industrial and handmade. Multifunctional, interconnected spaces are highlighted in an effort to provide sustainable solutions to modern housing and retail environments.

Spatial and Conceptual Diagrams

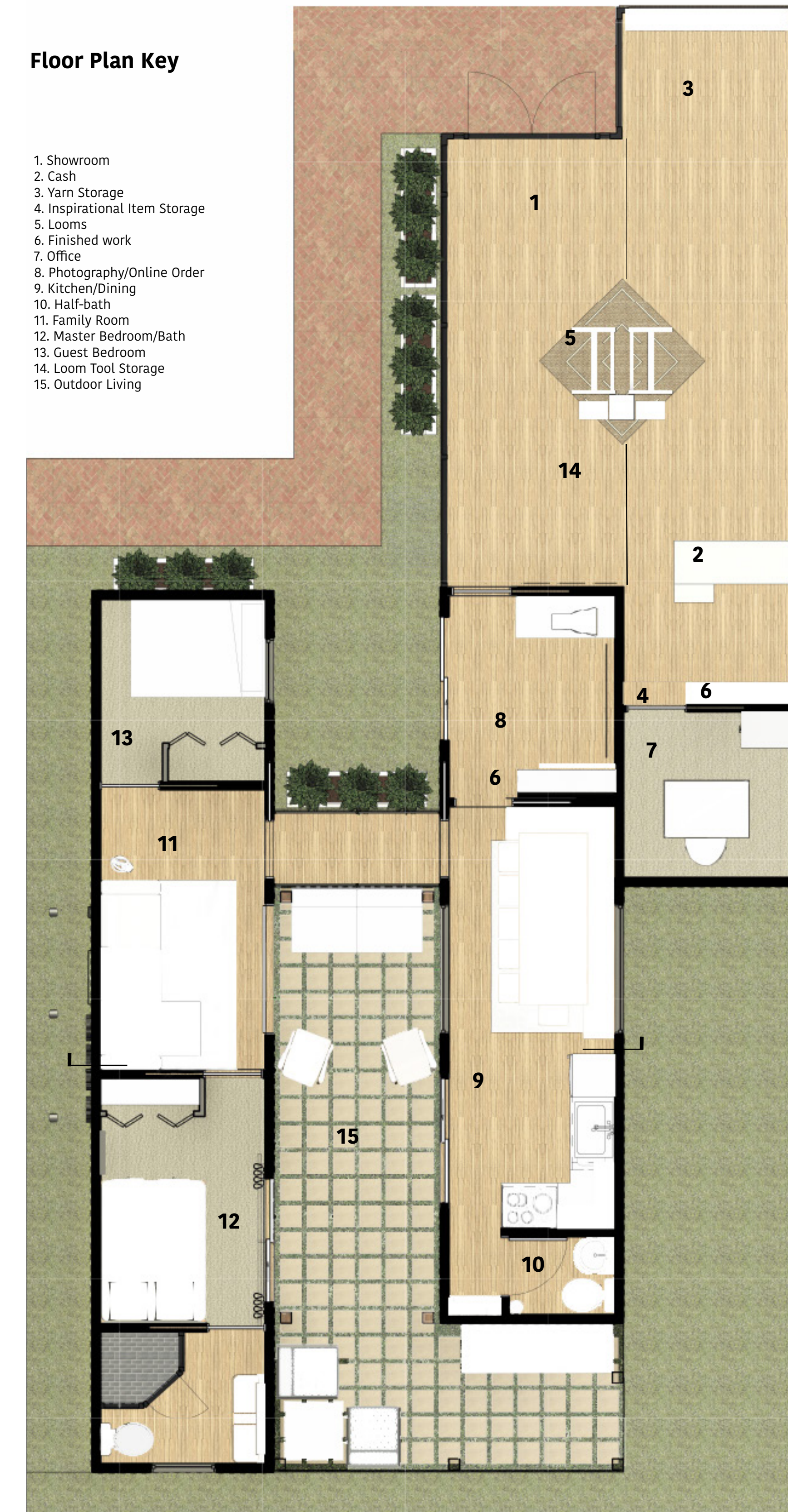
The configuration of the shipping containers was set to maximize square footage while focusing on the movement of both the client and the customers through the space. The zig-zagged pathways, inspired by their usage in Navajo textiles, acts as a strong wayfinding guide for the person experiencing the space. (7) Openings through the outside area to other spaces in the plan allow for a connection between indoor and outdoor spaces as well as relationships between the various interior spaces.



Showroom Perspective

Floor Plan Key

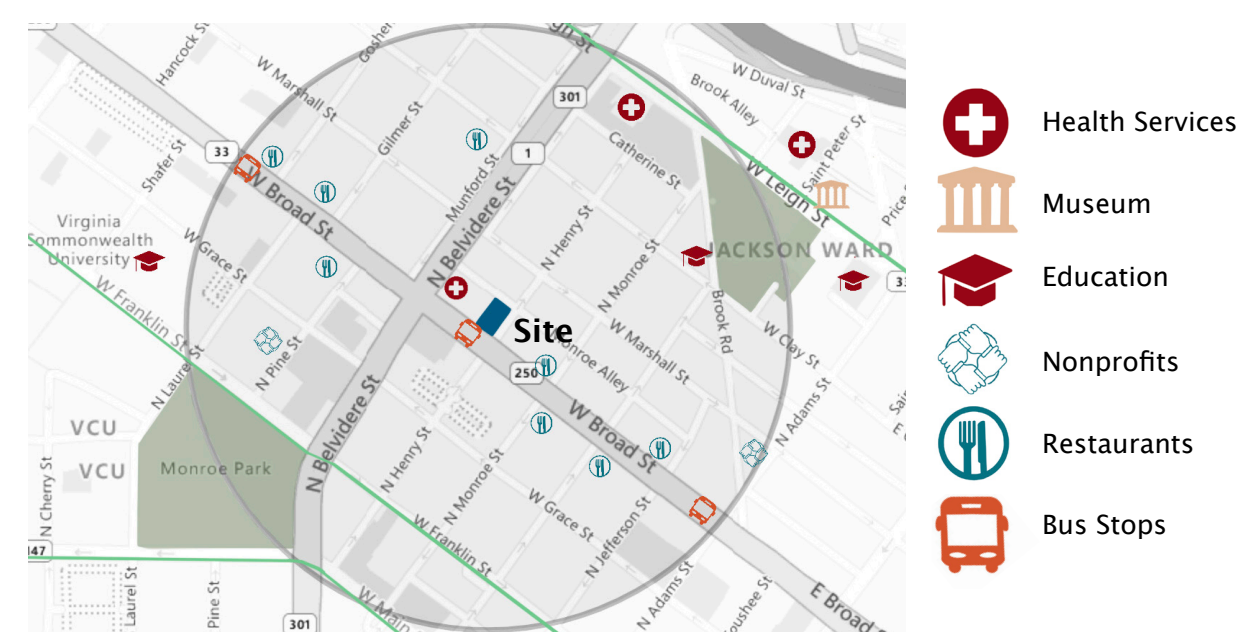
1. Showroom
2. Cash
3. Yarn Storage
4. Inspirational Item Storage
5. Looms
6. Finished work
7. Office
8. Photography/Online Order
9. Kitchen/Dining
10. Half-bath
11. Family Room
12. Master Bedroom/Bath
13. Guest Bedroom
14. Loom Tool Storage
15. Outdoor Living



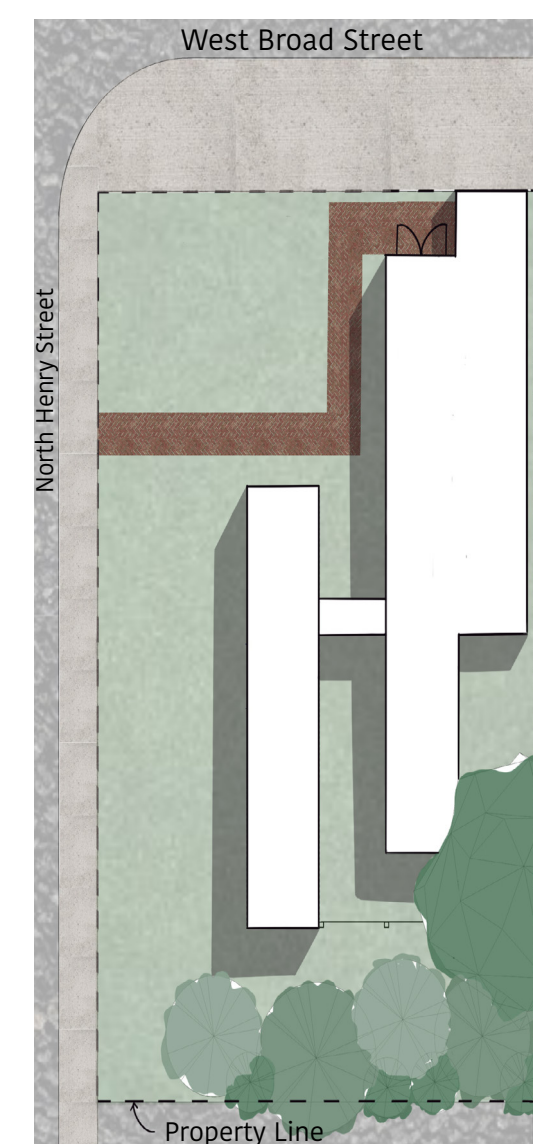
Floor Plan

Scale: 1/4" = 1'0"

Site Map



Site Plan



Located in the heart of Richmond, Virginia, 504 West Broad Street is among many shops and restaurants that attract high levels of foot traffic. Richmond is a growing area that fosters a very diverse and friendly community. The corner location of the site allows brand visibility from two streets as well as lots of natural light in the storefront area. Broad Appetit, a local farmers market on West Broad Street, is a large celebration of food, gathering, and culture that brings in many shoppers every Sunday in the summer.

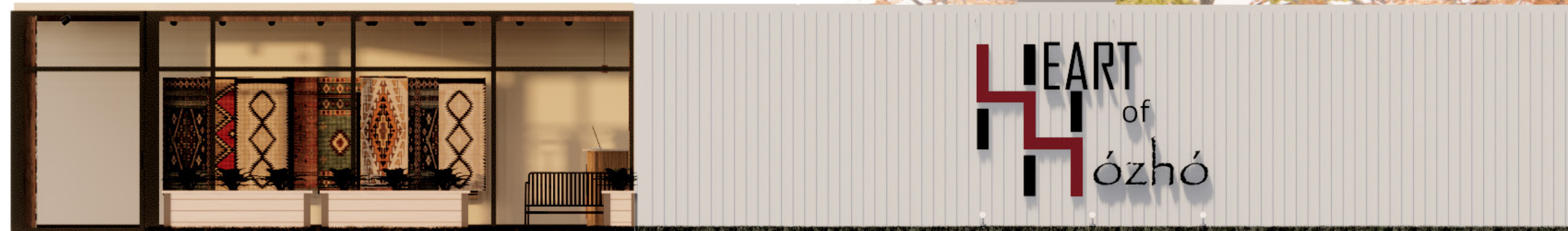
The site offers many ideal amenities within walking distance, including public transportation access, restaurants and cafes, an art museum, a non-profit for local creators, a pharmacy, and outdoor public parks. The walkability score of the area specific to the site is 92, and the bikability score is 80. Both of these scores are very high and help contribute to promoting an overall sustainable lifestyle.



Front Entrance Perspective

The yarn storage, inspired by the diagonal patterns in traditional Navajo weavings, provides an interesting street display as well as shading from the southern facing storefront windows.

Exterior Elevation



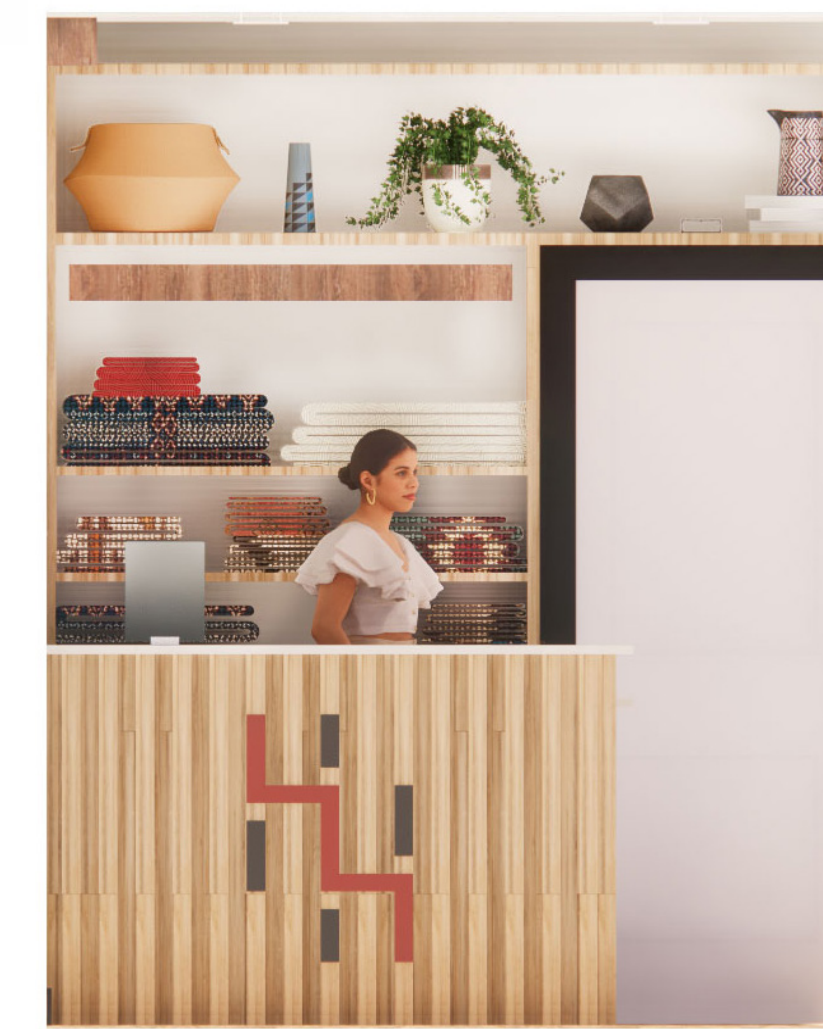
The central location of the loom creates a circumambulation for customers by allowing them to observe the process of weaving while they thread themselves through the showroom space. The loom placement also encourages a clockwise path of travel. This decision was based on research of traditional Navajo homes called Hogans. In these homes there is often a central fireplace and residents move in clockwise patterns around the home (4). While creating physical spacing between customers and encouraging one way travel, this decision promotes a safer post-covid environment. The floor plan also emphasizes the centralized space with the placement of the flex space, which acts as a transition between the residential and commercial spaces. The centralized orientation of important spaces strengthens the influence of the Navajo culture and their deep rooted tradition of circular movement between interacting environments.

Covid- Related Considerations

The showroom space on the commercial side of the design is an open plan with plenty of space for people to walk around while maintaining a physical distance from others. This ensures that proper health and safety measures are considered through the circulation. The materials used throughout the space contain the antimicrobial features necessary to maintain a clean and healthy space overtime.

Cash Desk Elevation

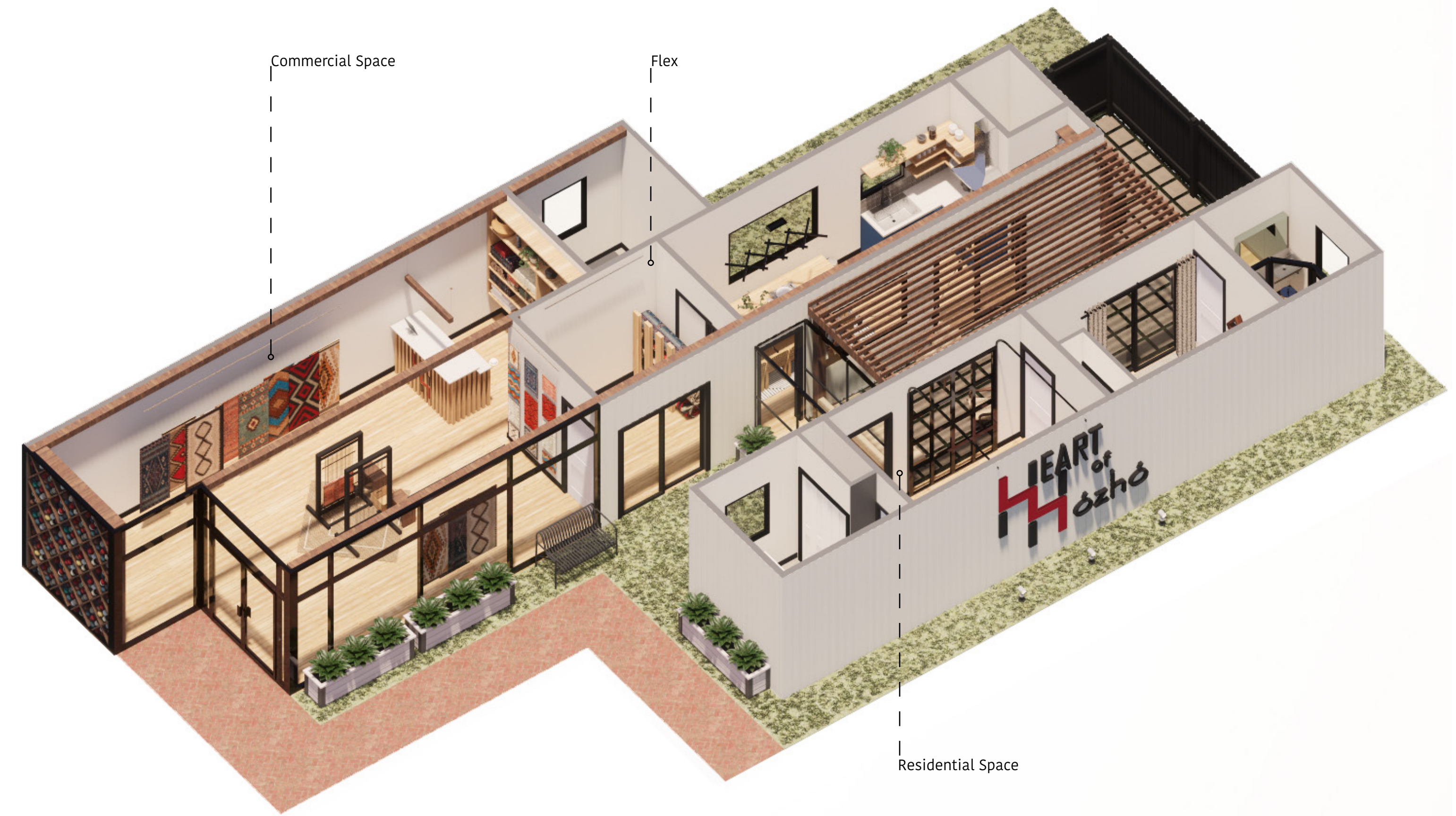
This elevation shows the cash desk located in the storefront. Behind the desk is the storage for finished work and inspirational items, and the door leads to the office so the residents can have easy access between public and private work spaces.





Living Room Perspective

The garage door and glass walkway make the interior living space feel connected to the outdoor living space and the kitchen/dining area. A skylight provides additional natural light to further limit the use of electricity and contribute to the overall sustainability of the project.



Axonometric

The axonometric view shows the prominence of the zig-zag pattern and its relationship to the exterior view. It also shows the symbiotic relationship of interior and exterior within the design, and the separation of commercial and residential space.

Shipping Container/Sustainability Research

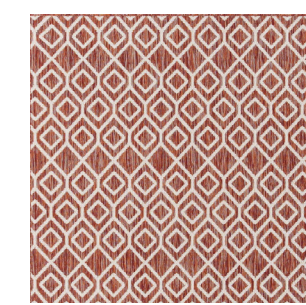
Building sustainably can be a challenge, but is important to ensuring that we give back to the environment in as many ways as possible. With shipping containers, it is vital to recycle older, more "beat-up" containers, as opposed to using newer containers, because newer containers have not lived a full life serving a purpose as an actual shipping container. (8) There are many toxic materials used in shipping containers, such as the flooring and the paint, and these considerations were kept in mind when choosing and spec-ing materials for the project. This project relied heavily on the use of natural light in order to create a more sustainable living style. We implemented skylights and large windows so that electricity would not have to be used during the day. The glass walkway connecting the residential areas also allows for heat conduction during the winter and cross-ventilation airflow between the containers.



Kitchen Perspective

The kitchen and dining area are located adjacent to the outdoor lounge area in order to provide convenient travel between the spaces. Sliding glass doors make the spaces feel connected, and the interior feel connected to the exterior. Additional shelving was added at the end of the hallway to maximize storage.

Material Selections



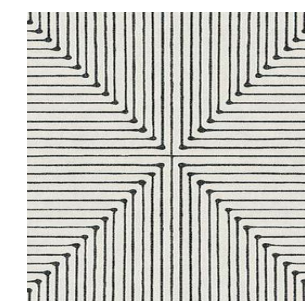
Jill Zarin Rug



Pratt and Lambert
Postal - Blue Interior
Paint



Mohawk Vinyl - Gateway



Johathan Alder -
Inkdrop Rug

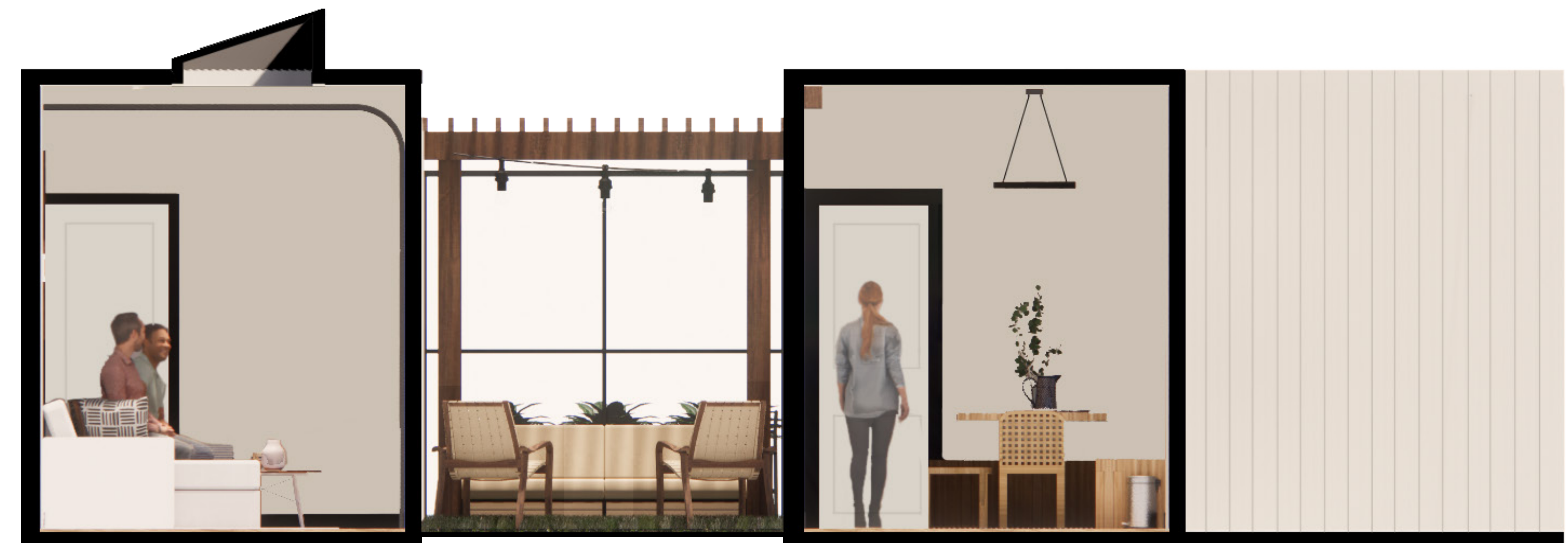


Stucco



Corrugated Steel

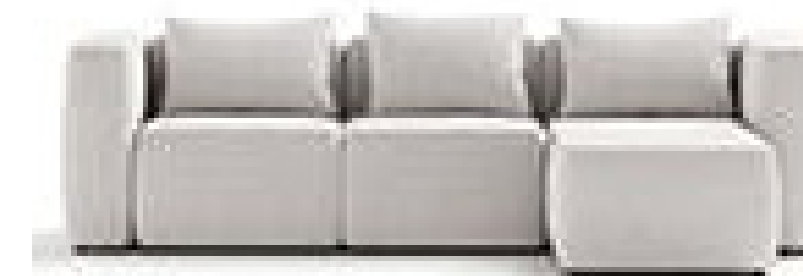
The selected materials were chosen to highlight the symbiotic relationships between the complementary color schemes of red-orange and blue-green. A balance between textured and sleek materials was chosen to reinforce the sense of Hózhó through mutually beneficial relationships. Patterns with diamonds and geometric forms were selected to celebrate traditional textile elements within the space. (7) The effects of COVID-19 influenced the selection of the flooring and countertop materials in the showroom space. These smooth materials are easily wiped clean so that regular sanitization can take place. Stucco is placed on most interior corrugated walls in layered with straw to provide a sustainable option for insulation.



Cross Section

This cross section shows the the relationship between the interior and exterior spaces within the residential spaces. A garage door, sliding glass doors, and an enclosed walkway provide multiple options for traveling between the containers, while keeping the line of sight between containers open. A pergola was added above the exterior living area to provide shading to both the exterior and interior through the glass doors.

Furniture Selections



HighTower Kona Sectional



Louis Paulson AJ Lamp



Mahasmut Wooden Chair Hyou



Modern Forms Scissors Pendant

Each furnishing selected for this project was chosen with the intent of creating a cohesive space which also contributed to the materialization of the concept. A lot of inspiration was taken from Louis Polsen, and we used his AJ floor lamp for our living space. Black accents, such as the trim of each doorway, matched with light materials were used in order to bring out a heavy contrast in the space, while also honoring the significance of the color black from the Navajo Culture.

Citations

- (1) "Design-Builder Shipping Container Homes: Kubed Living: United States." Kubed Living, <https://www.kubedliving.com/>.
- (2) Fearson, Amy. "Nakai House by University of Colorado Students." Dezeen, Dezeen, 6 May 2015.
- (3) "Identifying Yarns and Dyes to Tell Time." Arizona State Museum.
- (4) Krol, Debra Utacia. "Have You Heard of a Navajo Hogan?" Architectural Digest, Architectural Digest, 2 May 2018.
- (5) "Navajo Indian Culture and Traditions." Navajo Indians. <http://www.navajoindian.net/navajo-culture-and-traditions/>.
- (6) "Navajo Nation." Navajo Cultural History and Legends, Nov. 2002. <http://www.navajovalues.com/natani/navajovalues.htm#navajobeliefs>.
- (7) "Symbols and Motifs in Navajo Weaving." Canyon Road Arts.
- (8) "The Environmental Benefits of a Shipping Container Home." Eco Talk, <http://ecotalk.org/the-environmental-benefits-of-a-shipping-container-home/>.
- (9) "What Is Hózhó?" Bluffutah.org.
- (10) Wang, Haoying. "Why the Navajo Nation Was Hit so Hard by Coronavirus: Understanding the Disproportionate Impact of the COVID-19 Pandemic." Applied Geography, Pergamon, 29 July 2021.