

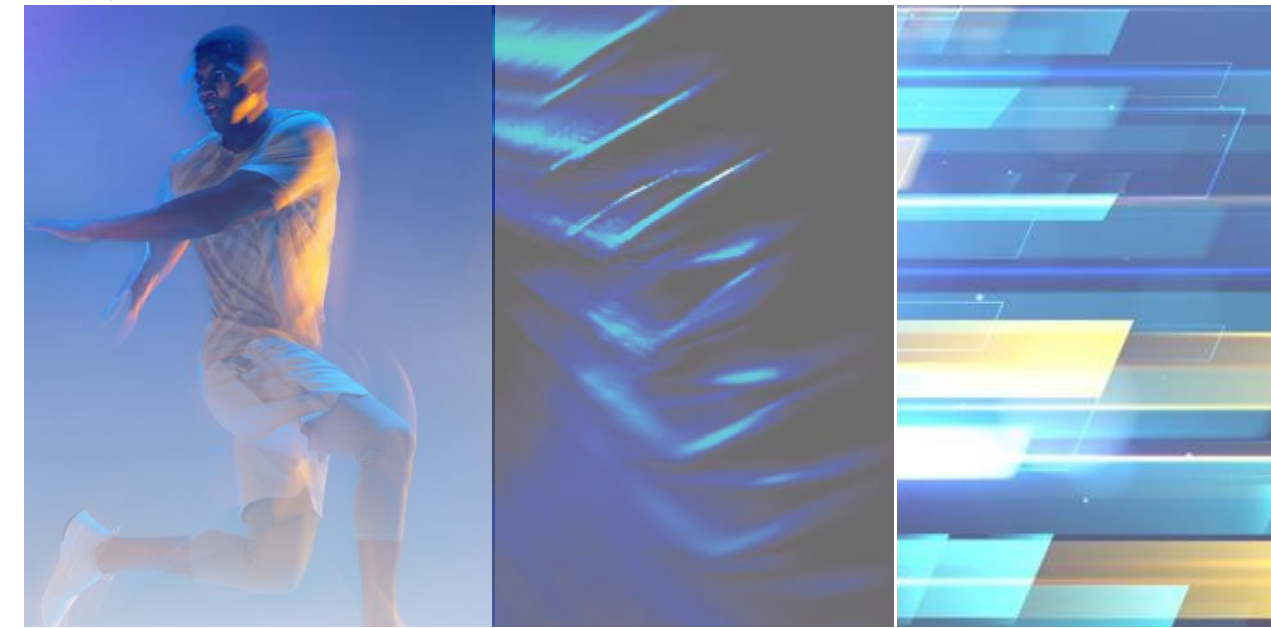
"H.O.P.E.S." - A homeless outreach center for providing empathy and support.



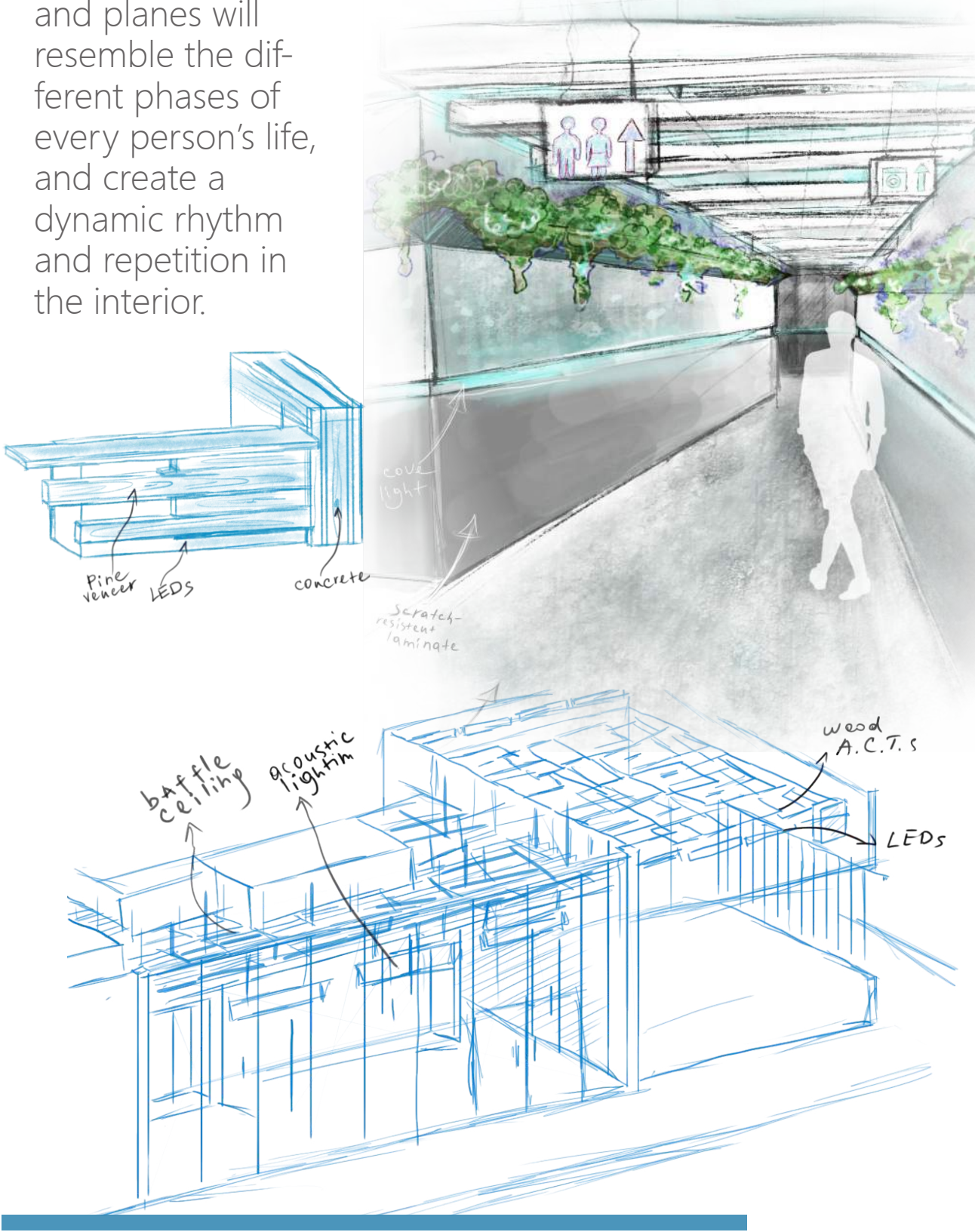
No judgment. No fear. No neglect.

At "H.O.P.E.S." every individual's needs are valued, addressed and prioritized. The center will take care of the essential needs of the visitors, as well as provide them with temporary comfort and security, and implement programs/services that focus on reinventing people's lives permanently and gifting them hope for the future.

Inspiration: MOVEMENT



Movement is the inspiration for progress. It evokes change. At H.O.P.E.S. everyone will get an opportunity to start over with a hope for a brighter future. Mimicked through the design of the space, the linear shapes and forms of different sizes, heights and planes will resemble the different phases of every person's life, and create a dynamic rhythm and repetition in the interior.



Color PSYCHOLOGY

- Warmth • Wisdom • Prosperity
- Sympathy • Friendliness
- Happiness
- Hope • Luck • Nature
- Abundance • Relaxation • Growth
- Serenity • Peace • Soothing
- Tranquil • Security • Trust



VIEW OF THE RECEPTION / ENTRY

Baffle ceiling system

LightArt acoustic pendants - Static

The reception area resembles the sensation of movement, progress, and growth. It's greeting the visitors with an eye-catching reception desk, uplit with soft warm lighting, creating ambiance, and an accent acoustic wall. The receptionist is separated from the general public with a glass screen. The architectural elements on the ceiling and wall planes feature the center's branding and represent the concept of movement ahead on the path of life. Attention to detail, such as durable rubber flooring, and a Foot grille mat, as well as lighting used as a navigation device on the walls, will ultimately create a functional space.

Artemide acoustic lighting

TECTUM Wood Fiber Walls

This entrance area will provide a welcoming experience to all visitors. The universal design considerations, such as the ADA counter height or barrier-free access and circulation will bring comfort to handicapped individuals. Visitors will positively respond to the soothing color scheme and soft ambient lighting used in the center.

Precedent: **BREAKING GROUND**
BUILDING AND RESTORING LIVES



Breaking Ground employs a range of effective, data-informed initiatives designed to enable people to forever escape the trauma of homelessness.

Home is more than just four walls and a roof. At Breaking Ground, home means a support system. These wraparound services help each person get – and stay – on the path to permanent stability:

- Benefits assistance
- Primary medical care
- Mental health care
- Substance use referrals
- Skills-building
- Self-sufficiency programs
- Connection to employment services

Similarly, the H.O.P.E.S. center implements strategies and provides special support and information to homeless people in need.

H. O. P. E. S.
INFO SESSION SCHEDULE

	Time	Location
MIND MATTERS: A path towards wellness and happiness	Monday, 1pm-2pm	-Living Area (September 15-April 15) -Outdoor Area (April 16-September 14)
AA, CA & NA: A path towards recovery	Tuesday, 1pm-2pm	-Living Area (September 15-April 15) -Outdoor Area (April 16-September 14)
HOUSING ASSISTANCE: A path home	Wednesday, 1pm-2pm	-Living Area (September 15-April 15) -Outdoor Area (April 16-September 14)
CAREER BUILDING: A path towards a brighter future	Thursday, 1pm-2pm	-Living Area (September 15-April 15) -Outdoor Area (April 16-September 14)

* statistical data retrieved from www.google.com

OUTDOOR EXPERIENCE

-An interactive area and gathering space for the info sessions
-“Communicating” with nature that will reduce anxiety, stress and/or depression.

PERSONAL HYGIENE

-10 convenient individual restrooms and shower areas
-Universal, sustainable, economical, anti-microbial, acoustic design using nonporous, waterproof, easily cleanable, LEED-certified, recyclable and biodegradable materiality.
-Allowing visitors for maximum privacy, spaciousness, sound absorption and comfort.

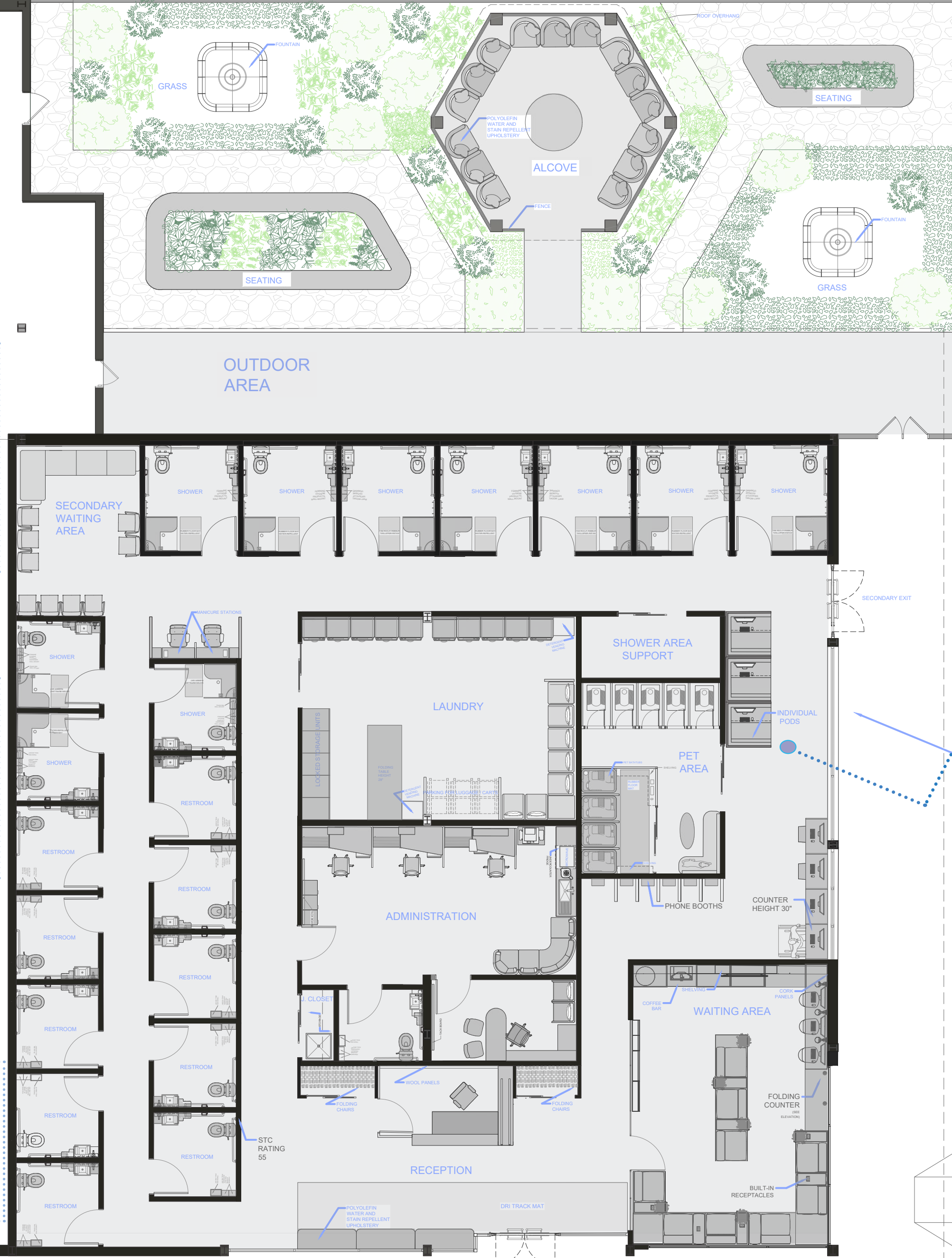
PRAGMATIC DESIGN

-Lockers and freestanding storage for visitors’ belongings
-Storage closets for foldable seating
-Folding/retractable furniture (counters, shower seats, etc)
-Spatial compartmentalization (movable furniture, multi-purpose areas)

AREA APPROX. 5,000 SF
MAX. CEILING HEIGHT: 15'-0"

ADMINISTRATION

-Proximity to the reception, waiting area, main hallway, entrance, and wet areas.
-Anthropometric and ergonomic furniture.
-Opportunity for both privacy and collaboration.



FLOOR PLAN - H.O.P.E.S. CENTER

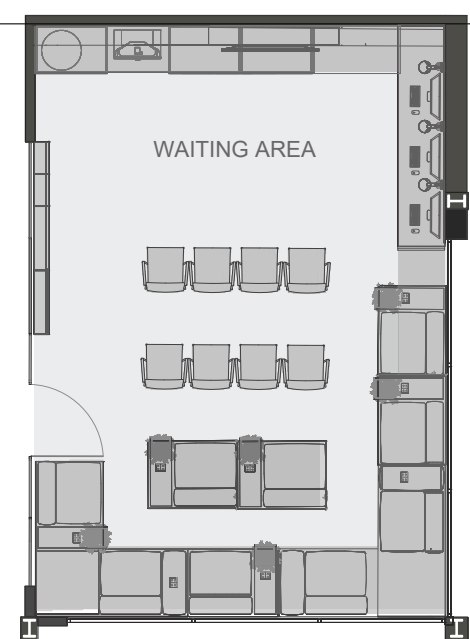
SCALE: 1/8" = 1'-0"

CIRCULATION

-Horizontal, Public, Private
-Compliance with IBC for occupancy classification and total load calculation
-Clear and unobstructed
-Secondary means of egress
-Spatial navigation (lighting, architectural and visual details)
-Circulation is barrier free, with a minimum width of 3'-8" and provide turnaround clearance for a wheelchair of 5'-0"
-A clear space of 2'-0" is provided on the latch side of any door.

WAITING AREA

-Acoustic architectural solutions, movable furniture, demountable glass partitions (NanaWall) will allow for sound attenuation, acoustic separation, compartmentalization, and spatial flexibility.
-The CO2 monitoring system will allow for freshness and abundance of air in the high-traffic area.
-Resilient, recyclable, durable, water-repellent, easily cleanable, slip-resistant, Fire-retardant, sustainable, biodegradable, non-toxic materiality.
-Charging stations and internet access
- Comfort and unity achieved through warm indirect lighting, soft upholstery, natural daylighting, and elements of biophilic design.
-Retractable/foldable furniture (see millwork detail), universal design, will allow for flexibility and convenience.



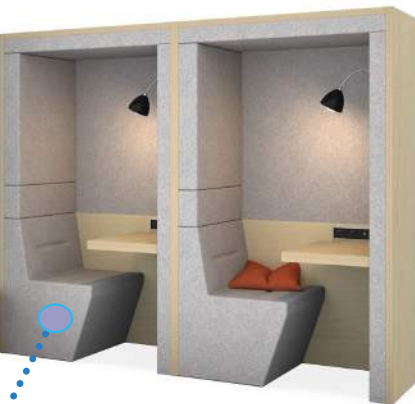
ALTERNATIVE PLAN OF THE WAITING AREA

SCALE: 1/8" = 1'-0"

The Floor plan of the living/waiting area has been reconfigured to provide additional seating and a new layout for the info session meetings, indicated in the chart on pg. 1

COMPUTER TRAINING

-Informational gathering, an opportunity for communication, research, job training
-Privacy partitions
-Variety of seating options (counter space, individual pods)
-STC and NRC allowing for focus and acoustic separation, architectural details (lighting, ceiling, walls, Floor)



ROOF OVERHANG

PET AREA

-Accommodating for the visitors’ pets and their basic needs
-Special equipment - pet baths, pet stalls, pet lounge area
-Proximity to the laundry and showers
-Acoustic separation

This welcoming waiting area is a versatile multi-functioning space. FFF&E selections are specified in compliance with durability, functionality, and sustainability requirements and possess exceptional properties. Fit for the H.O.P.E.S. center. Integrating layers of lighting - accent, task, and ambient allows to fully light the room, with fixtures that are dimmable, color-changing, sustainable and provide acoustic properties. Sound attenuation properties of the ceiling tiles and wall treatments will provide much needed acoustic separation from the rest of the facility.

DECOUSTICS acoustic wood panels

Daylighting controls

Foldable furniture (see millwork detail)

BIOPHILIC design



VIEWS OF THE WAITING AREA / LIVING

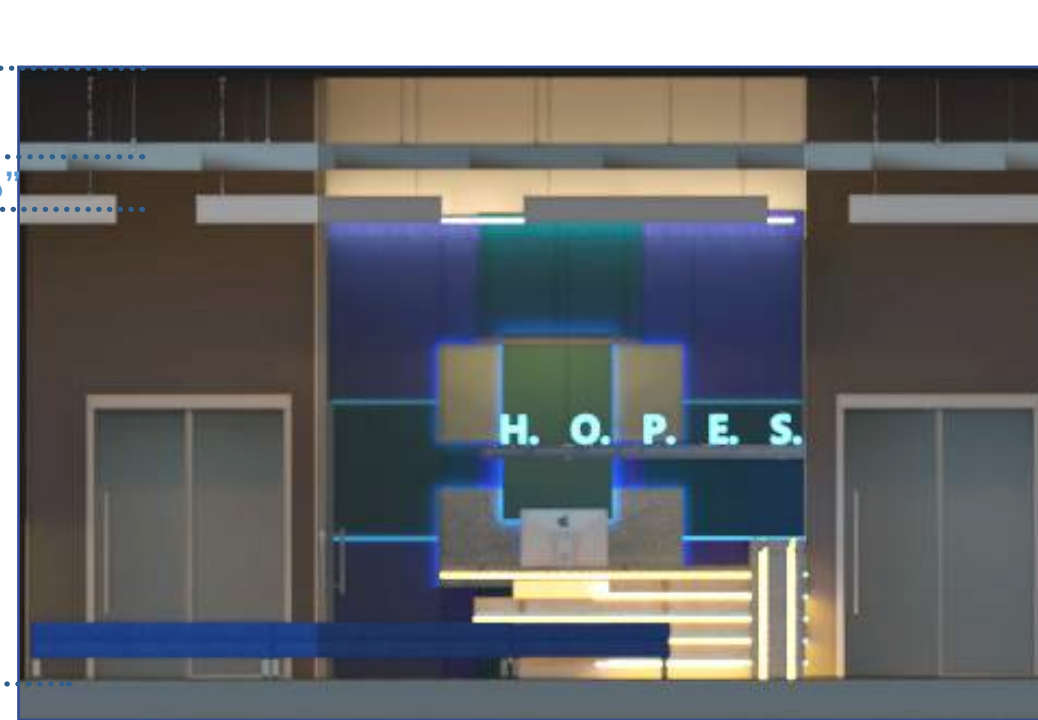
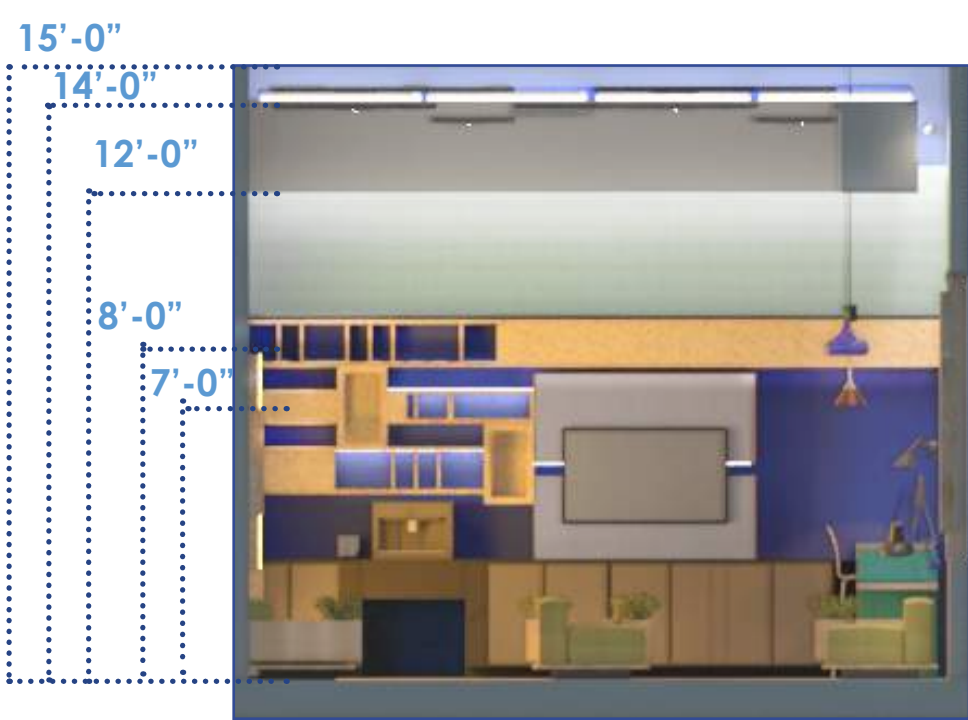
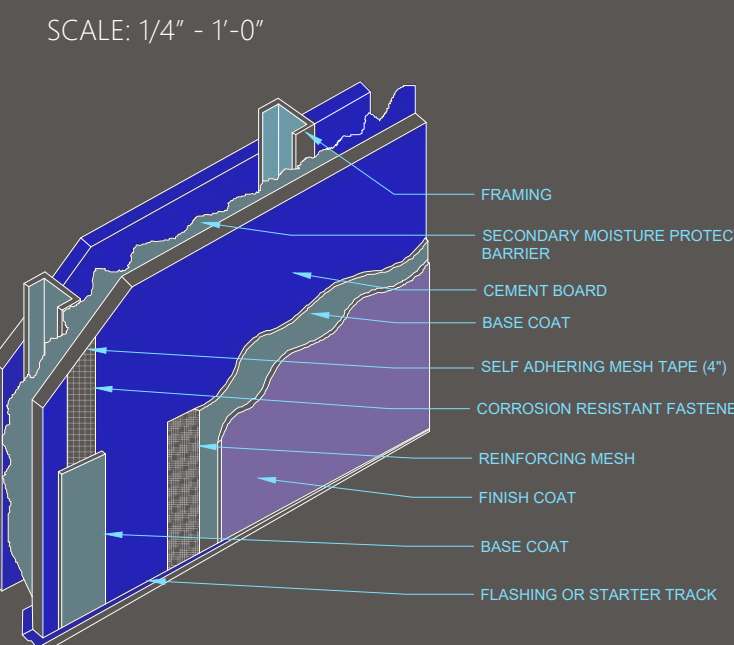
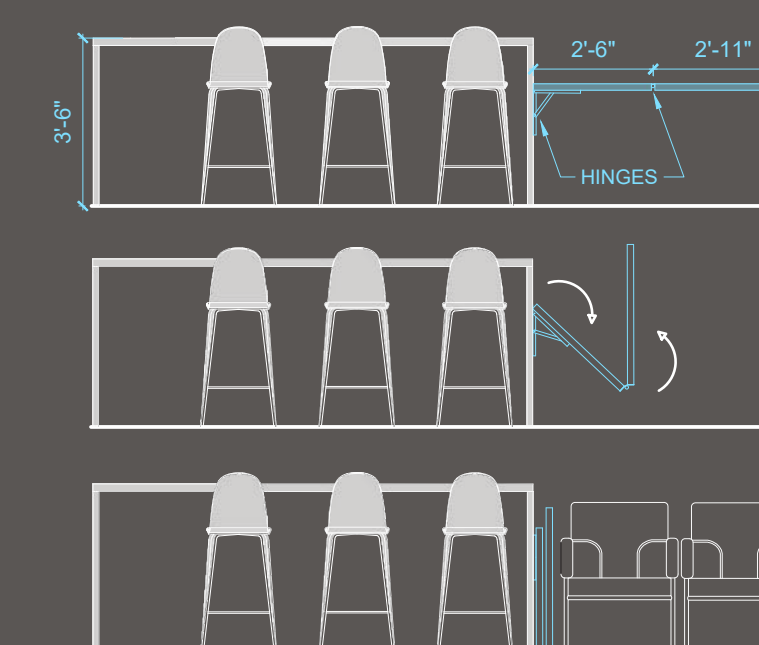
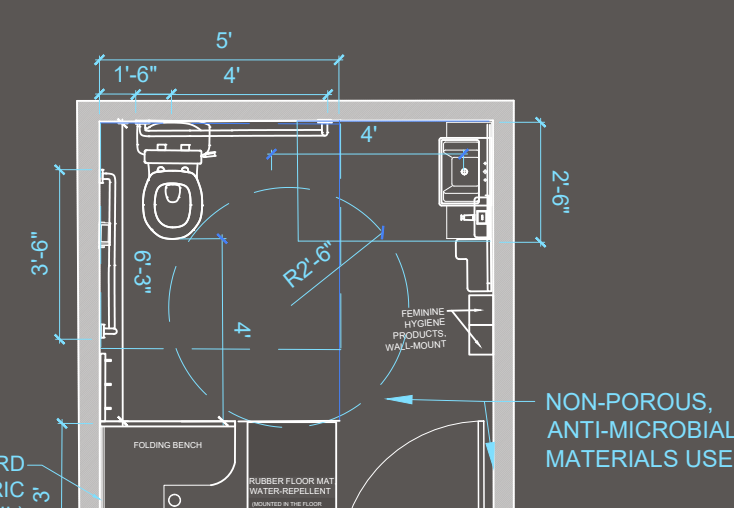
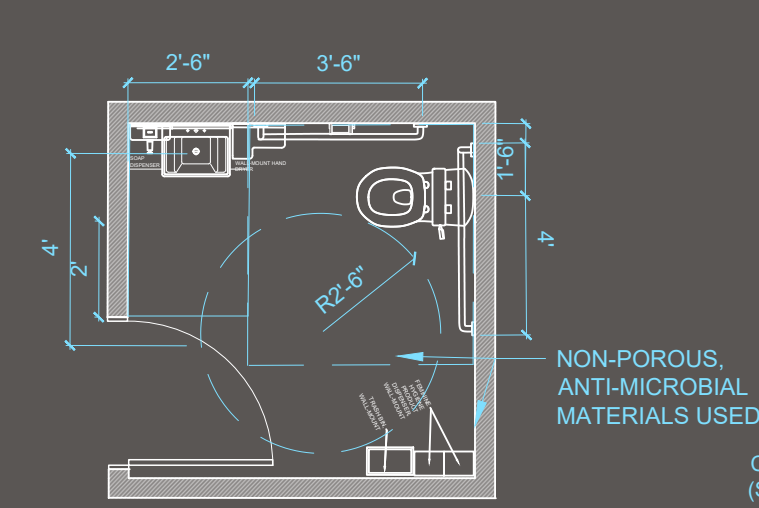


Resilient, durable materials

The visitors can gather in the living area without fear of judgment or privacy concerns. Individual seating is arranged in a way to avoid social anxiety and the feeling of discomfort. The soothing color scheme of blues and yellow-greens will maximize the positive experience of the visitors. A free coffee bar and a shelf full of books and magazines will uplift each individual. A touch of biophilia, integrated into the furnishings will prevent the interior from having an outdoor feel, which might be traumatic, and allow the natural element to be part of the cozy, enclosed home-like experience.

FFF&E, Technical Info/Details

<p>Polyurethane upholstery -250,000 double rubs -Spill-and-stain resistant treatment -Passes Cal TB 117-2013; -Passes NFPA 260/UFAC</p>	<p>Cork wall/ceiling planks -Biodegradable -Recyclable</p>	<p>Dri Track, matsinc -Made from recycled aluminum</p>	<p>norament (c) arago rubber flooring -Good for heavy traffic -Sound absorption -Slip resistance -Fire-retardant</p>
<p>100% Merino Wool -Uses: wallcovering, floor covering, lifestyle and home goods -Oeko-Tex (c) Standard 100, Sustainable, Biodegradable, Free of Harmful substances, reduced environmental impact -Flammability: ASTM E84; Euroclass Flameproof to EN 13501-1</p>	<p>Rubber cork -For Floors and walls -Recycled content: 34.9%</p>	<p>Laminate -Recyclable, biodegradable -Scratch resistance -Long-lasting -Economical choice -Vertical and horizontal applications</p>	<p>Decoustics acoustic wood panels - (NRC) of up to 1.00 -Flexibility -Fire Rated Class A -No-added urea formaldehyde core and recycled contents -Available in FSC® C020536 certified materials</p>
<p>100% Bella-Dura (c) Polyolefin -Water and stain repellent -50,000 double rubs (W) -Approved for outdoor use -Bleach cleanable</p>	<p>Pine veneer -Recyclable, biodegradable, energy efficient and non-toxic.</p>	<p>TECTUM Direct-Attach Walls: -Material: wood Fiber; NCR rating 0.85 -Durability: Impact Resistance, Scratch Resistance, Washability</p>	<p>Merlin CO2 24hr AVG Monitor • Clear digital readings of the live CO2 levels. • LED warning lights when the CO2 levels increase.</p>



Providing variations of ceiling heights and integrating layers of lighting help light the space properly and visually enlarge the interior, creating a contrasting relationship between the architectural and decorative fixtures. Implementing linear lighting reiterates the concept of movement and creates a rhythmic pattern on the ceiling plane.