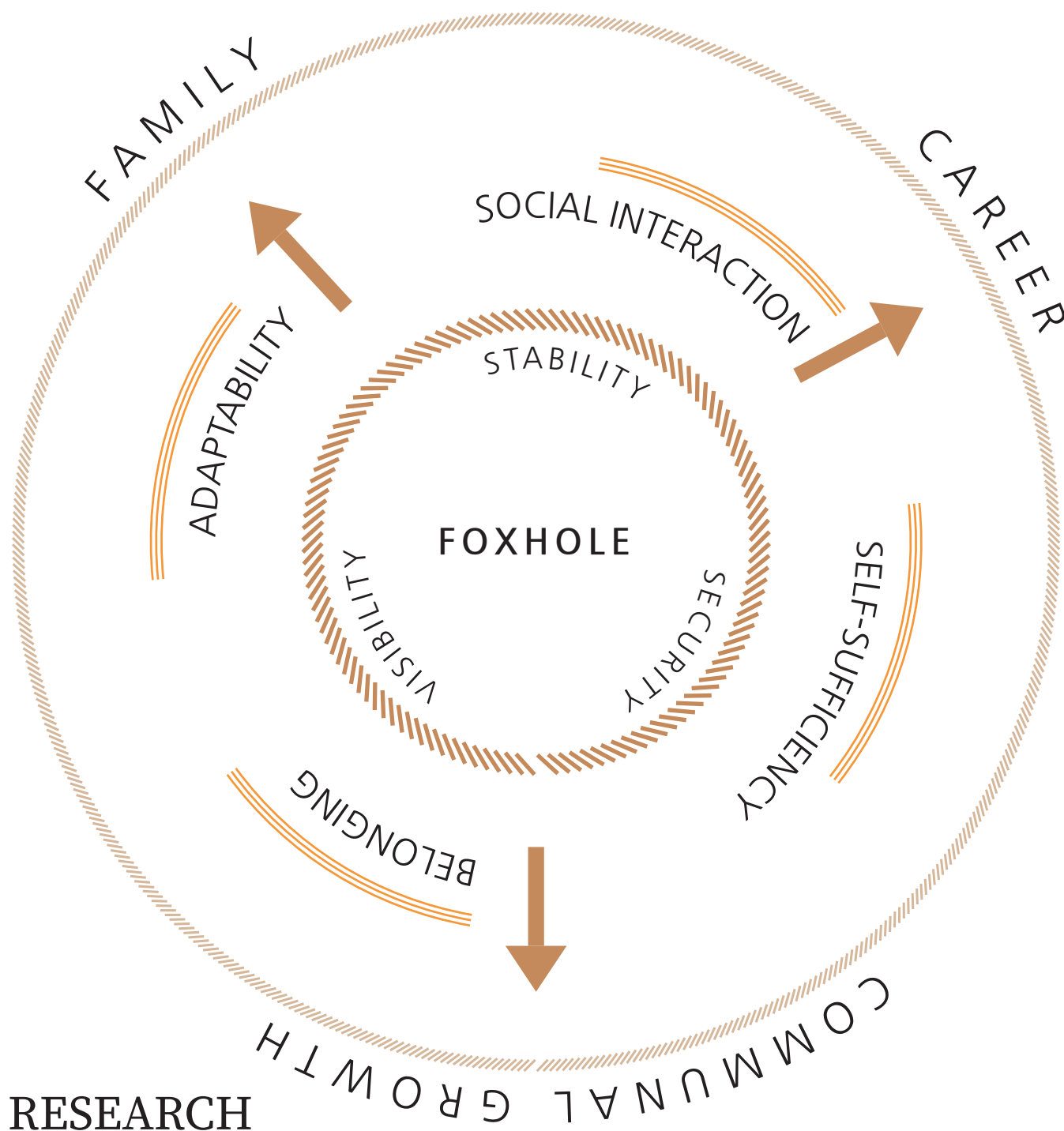


FOXHOLE

A PLACE OF REFUGE FOR VETERANS

THE SITE

1337 Estates Dr., Waco, Texas



DESIGN STATEMENT

/ˈfɑːks,hɒl/: A HOLE IN THE GROUND USED BY TROOPS AS SHELTER; A PLACE OF REFUGE OR CONCEALMENT

Promoting a sense of uplifting security, foxhole provides a burrow of stability that fosters growth among veterans and their greater community. Foxholes, as used in war, provide refuge and safety - which serves as the inspiration for our design. The circular light fixture and desk in the entry are modeled after the foxhole structure, providing familiarity and security for our veterans. Meanwhile, adaptability of the interior is achieved through sliding partitions, allowing optimal space for residents and the community to gather for social interaction and communal growth. This adaptable quality is analogous to a foxhole's alterability for soldiers' needs in war, just as this space is modifiable for our residents' needs. This design is grounded in earth tones and natural elements to promote a calming aesthetic that allows all residents to feel at peace in their home.



RESEARCH

The veteran population has needs which differ from the average civilian; these should be considered when developing a residential space in which they can flourish. These needs are based on the likelihood that each veteran deals with a physical and/or mental condition. Common conditions identified by the US Department of Veterans Affairs include: depression, anxiety, PTSD, loss of range of motion (problems moving your body), chronic back pain, and severe hearing loss. According to Maslow's Hierarchy of Needs, one's most basic needs must be met before working towards more complex needs. Safety and security are amongst the most important basic needs that must be satisfied in order to pursue personal growth.

Presently, COVID-19 poses additional concern for the safety of our residents; this was taken into account while keeping social sustainability at the forefront of the design. Universal design is also applied to promote safety in the interest of our veterans. The floor plan and renderings depict circulation routes for social distancing, without interfering with the residents' needs for space based on potential disabilities. Easily-manipulated open spaces were created to allow for and encourage interaction and connection among residents. Open spaces with easily visible entrances and exits are not only essential to calming the mind, but also facilitating conversation to take place at a safe distance from one another. According to Belonging by Nicola Bacon "Love and belonging are necessities for people to develop self-esteem and confidence...to be able to live creatively and maximize our potential." Multi-purpose rooms with multiple tables and seats provide a designated area for creativity with peers. The public space is designed to allow residents to leave their rooms and immediately be immersed in the social realm. This design allows room for the outside community to join the veterans in their growth and foster new connections, leading them to a brighter, more productive future - all the while keeping them safe and healthy.

Near Shore of Lake Waco
In a Residential Neighborhood
Within Woodway Park
1 Hour Drive to Fort Hood Army Base

1-5 MILES

Midway Park COE
Veteran Affairs Hospital VAMC Waco

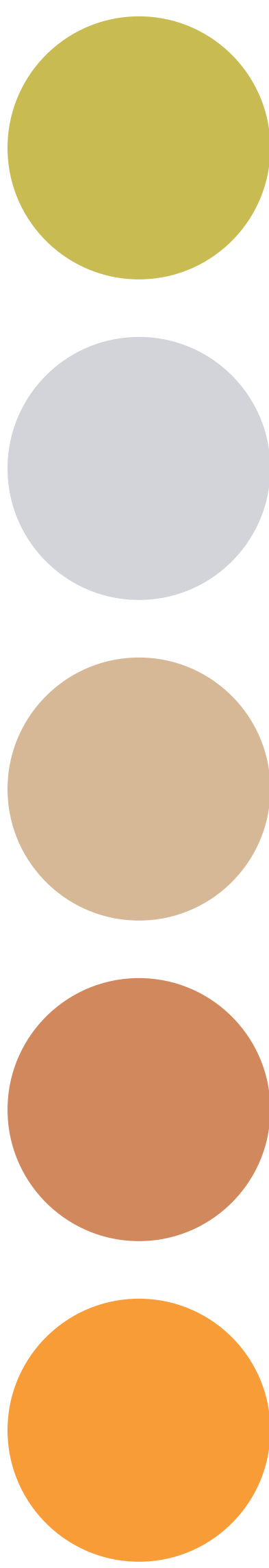
6-10 MILES

Waco Police Department
Community Center
Downtown Waco

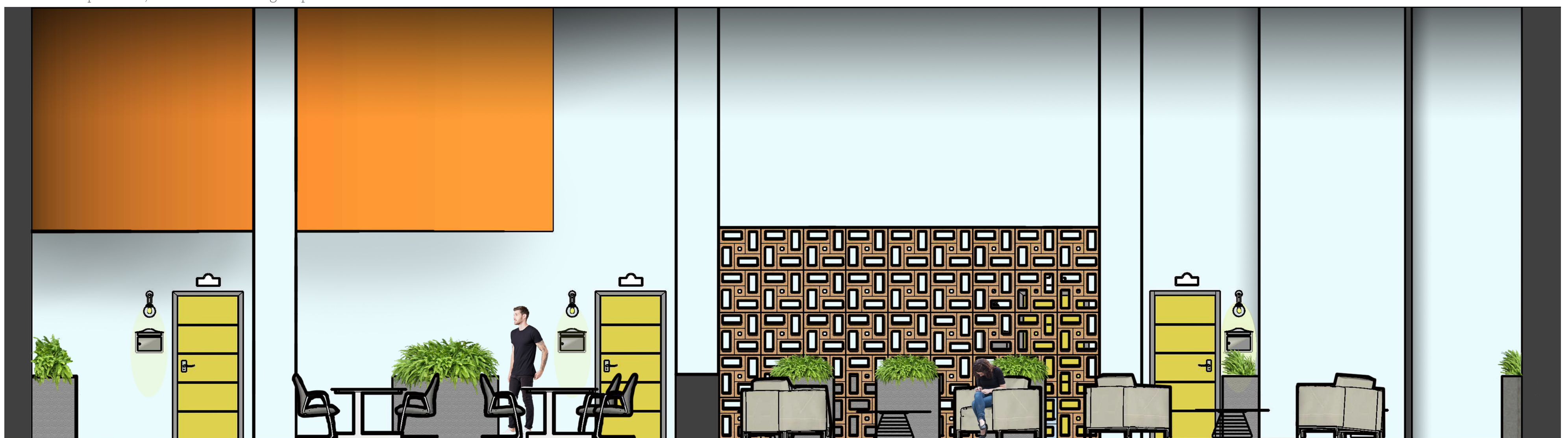


INTERIOR FACADE

This perspective expresses the easy flow from the residents' studios to the open common area. The lowered ceiling adds color and a sense of coziness as residents enter the studio area. Along with the portable cork partition, the lowered ceiling helps absorb sound in the main area.

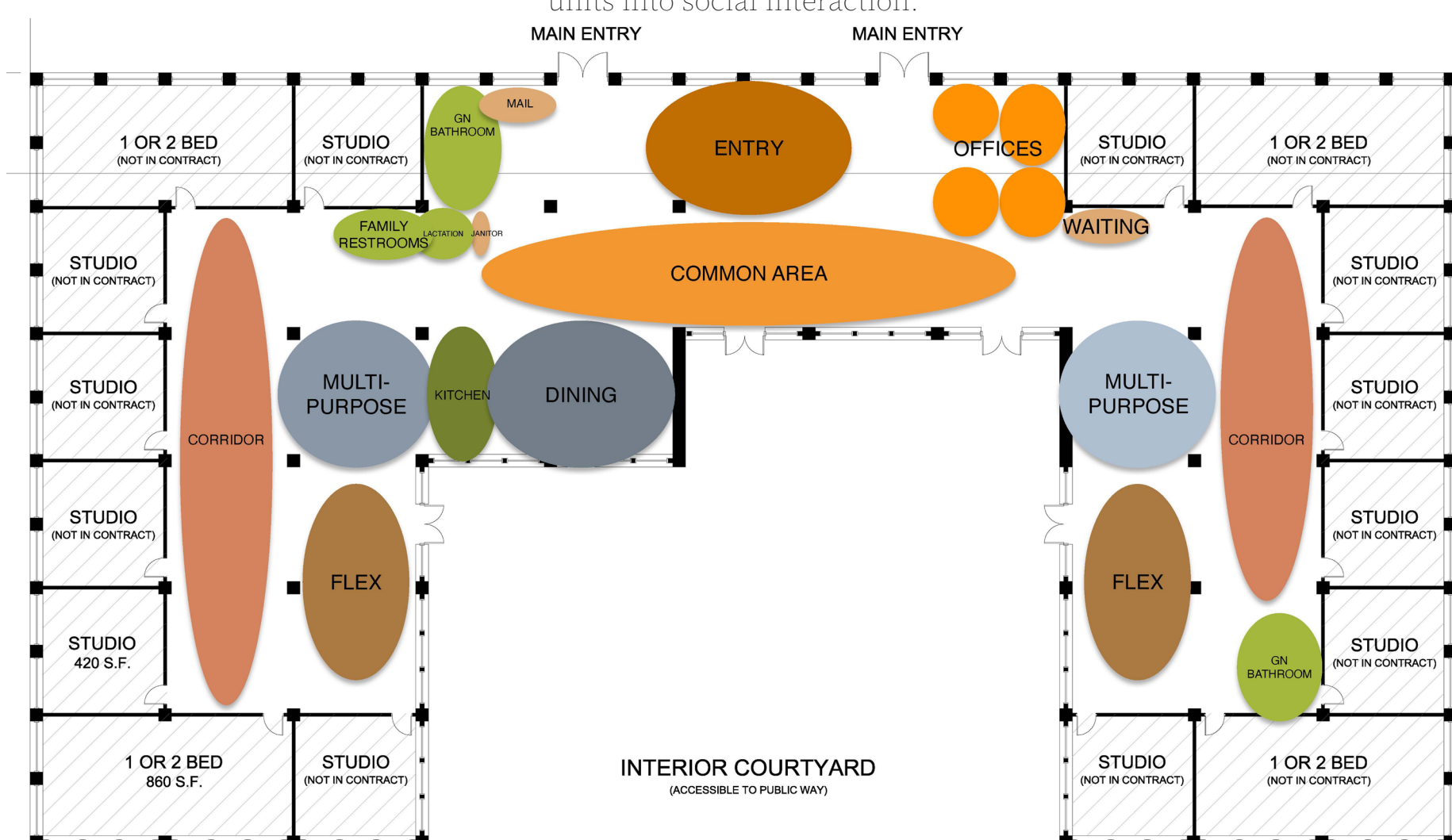


COLOR SCHEME

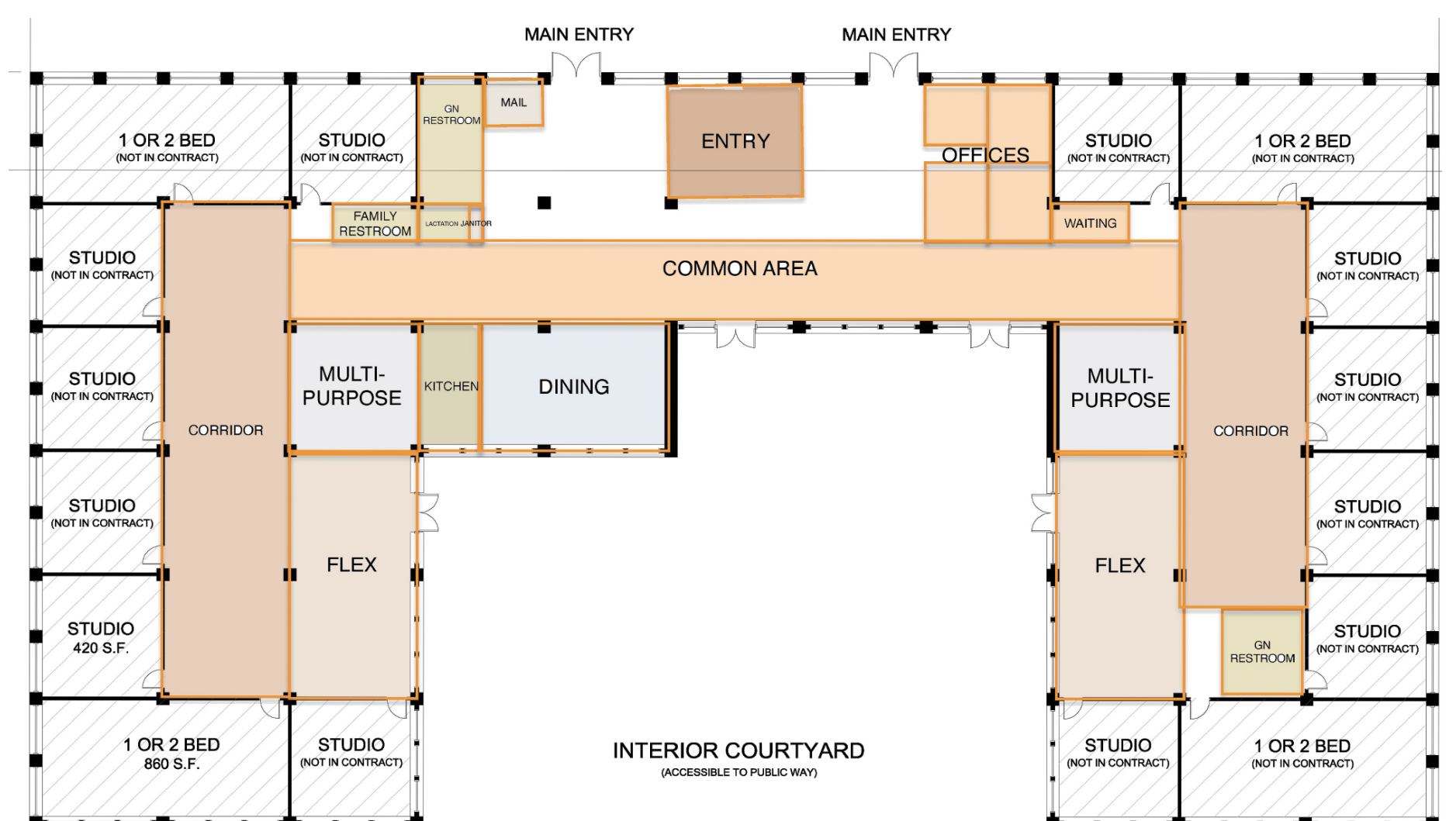


FACADE SECTION

This section depicts a wide view of the interior facade and communicates the openness and flexibility of the common area. This public space provides effortless integration of the residents from their units into social interaction.



BUBBLE DIAGRAM



BLOCK DIAGRAM



KITCHEN SECTION

The kitchen/dining space is located close to the entrance. It serves as a central space for all residents to gather together and bring guests to visit for meals.

MATERIALS JUSTIFICATION

Earth tones make up the color scheme displayed in the materials. The orange upholstery will be used in small amounts to serve as an anomaly, breaking up the neutral colors. Natural materials such as cork paneling provide excellent acoustics which will supply privacy between spaces while still allowing some visibility. Ease of cleaning and sanitization was made a priority in this design. The blue/gray paint with an Eg-Shel finish, the wood-pattern vinyl tile, and both polyester upholsteries achieve this goal. The carpet tile is durable to withstand heavy foot traffic. The wall covering in the entry, used as an accent wall, brings organic lines into the space and provides a natural aesthetic with its abstract flower detail

MATERIAL SELECTION



Type II Wallcovering Vinyl



100% Woven Polyester Exceeds 100,000 Double Rubs



Solid Vinyl Tile 29% Pre-Consumer Recycled Content



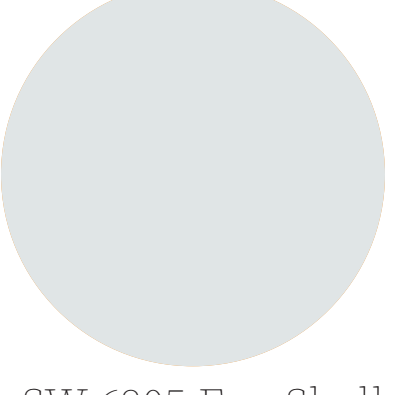
Tufted Carpet Tile 56% Pre-Consumer Recycled Content



100% Eco Intelligent Polyester 70,000 Double Rubs



Cork Acoustic Panel NRC: 0.8



SW 6805 Egg-Shell Zero-VOC Paint



LOBBY PERSPECTIVE

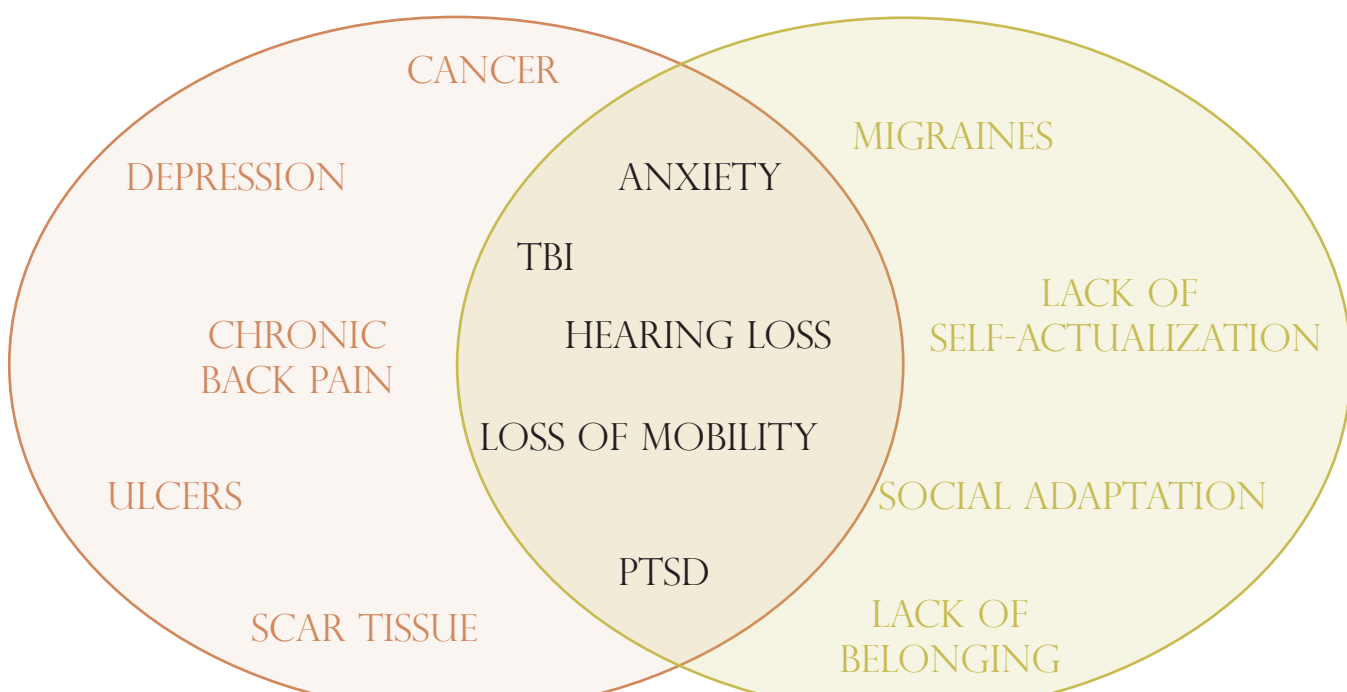
As residents and guests enter the building, they are welcomed to the foxhole - which is represented by the circular sky light, light fixture, and desk. The seating area invites them to sit and converse with one another. Sound absorption materials such as the textured wall covering and wood planks hanging from the ceiling help to quiet the area.

The central feature of the Foxhole facility is a circular skylight, followed by a corresponding ceiling feature and front desk of the same shape to insinuate a cylindrical hole. The Foxhole motif will be displayed throughout the entirety of the space.

All seating arrangements throughout the lobby space are placed 6'0" apart to insure social distancing and social sustainability. Additional seating may be added as rules and regulations are updated.



Challenges Veterans Face That Are Covered By VA Benefits & Foxhole Facility



Portable cork partitions will divide spaces of different use, allow flexibility in the number of occupants, and absorb sound to ensure more privacy among the wide spaces with high ceilings.

With the same furniture design as the front lobby, all seating is at a safe distance of 6'0" apart and provides a cohesiveness from space to space.



MULTI-PURPOSE SEATING AREA

This reading area is a great place for residents and guests to converse with each other, or relax with a nice book at a safe 6-foot distance.