

DESIGN Well

THE LOCATION

Design Well is located at the intersection of NW 6th Street and Broadway Avenue, in the midtown area of Oklahoma City. This shared space is affiliated with the University of Central Oklahoma. Historic Automobile Alley serves as the surrounding context for this concept. The street derives its name from the fact that it once housed fifty two of seventy six dealerships in the city by the year 1920. The area was a bustling hub of commerce for many years. Over time, the dealerships moved out, sending the district into a state of decline. In the early 2000's, investors again saw the potential in this once vibrant area. Due to an influx of money and business, Automobile Alley is now a walkable district filled with activities for all ages (By 1911, 2015).

However, there is a sobering juxtaposition that exists between economic development and socio-economic conditions that affect the community at large. Of the many factors that directly impact the community in a negative manner, obesity is by far the most systemic. Oklahoma is a perennial contender for first place in obesity rates across the nation. As of 2014, the obesity rate had climbed to a staggering 33%. Add the percentage of obese high school students, and the number accounts for almost half of the state (Oklahoma State Public, 2015). Several initiatives are in place to encourage the city to adopt a healthier lifestyle (Oklahoma (n.d.), 2015) (n.d. Retrieved, 2015), but despite the good efforts, rates continue to climb. As a result, the population is left more susceptible to life threatening conditions that could otherwise be avoided.

The goal of this space is to inspire healthy living through design and community outreach. Spaces will facilitate opportunities for collaboration between students, faculty, design professionals and the community in an effort to eradicate the negative effects of obesity.

THE CONCEPT

Design Well is an environment that facilitates education through design and community interaction. Spaces draw inspiration from the surrounding context of Automobile Alley. Like the automobiles that were once displayed in the buildings, spaces are streamlined with sophisticated materials such as metal, glass, and concrete. The color palette is bright, yet sophisticated. Furnishings are chosen with a timeless feel in mind, creating an educational space that can grow with the city and provide support for future generations.

The issue of obesity is addressed through furnishing selection and general programming. Studies have shown the dangers of an increasingly sedentary lifestyle. In order to combat this implication, standing desks and other types of exercise based office furnishings are specified. Spaces are designed to accommodate programming that encourages participation from the community. The first floor contains an art gallery and community meeting space for collaborative events such as lectures and demonstrations. The building is conveniently located near many architecture and interior design firms to enhance collaboration, and the flexible community meeting space located on the first floor can be used to host prospective college students.

The second floor houses additional meeting rooms for interaction as well as working space for students. A kitchen is included on the second floor for cooking demonstrations; the intention is that local chefs as well as community health officials would host cooking classes designed to educate the public on better eating habits. The design studio has a variety of seating and work areas, designed to accommodate the various age groups in a vertical studio. Active and passive spaces provide an environment for different levels of work and reflection.

Design Well provides collaborative, inspiring spaces for education and action toward the broader goal of combating obesity within the community.

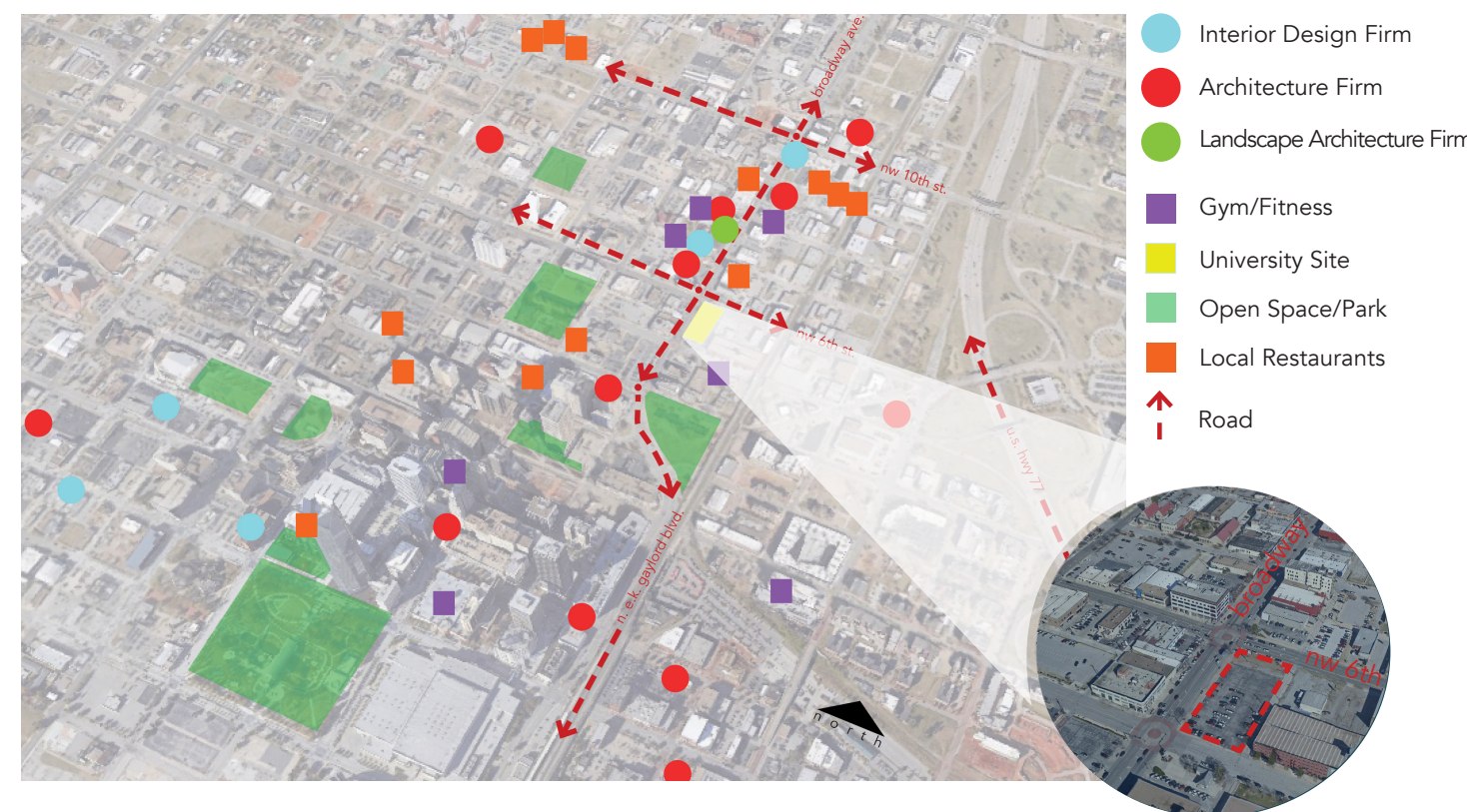
PROJECT GOALS

- CREATE** spaces that lend themselves to collaborative activities between students and the community at large.
- FACILITATE** a vertical studio that takes the needs of students in various age groups into consideration through programming and furniture selection.
- DESIGN** sophisticated spaces that provide a context for organized activities designed to combat the negative effects of obesity.
- CONSIDER** accessibility of the utmost importance in the space planning of Design Well, maintaining all standards set forth by the ADA Act.
- UTILIZE** principles of sustainability wherever possible in room placement, finish selection and lighting selection to create an efficient space.

REFERENCES

By 1911. (n.d.). Retrieved November 12, 2015, from <http://www.automobilealley.org/history>
 Oklahoma | State public health statistics | America's Health Rankings. (n.d.). Retrieved November 12, 2015, from <http://www.americashealthrankings.org/OK>
 Oklahoma has seventh-highest obesity rate in U.S., report shows. (2014, September 4). Retrieved November 12, 2015, from <http://newsok.com/article/5338658>
 Oklahoma. (n.d.). Retrieved November 11, 2015, from <http://stateofobesity.org/states/ok/>
 (n.d.). Retrieved November 9, 2015, from https://www.pinterest.com/pin/469359592387031605/?fb_ref=93942479635612183:f3bb2c23cc184e74a5fd
 University of Portland, Clark Library. (n.d.). Retrieved November 9, 2015, from <https://www.knoll.com/knollnewsdetail/university-of-portland-clark-library>

SITE ANALYSIS



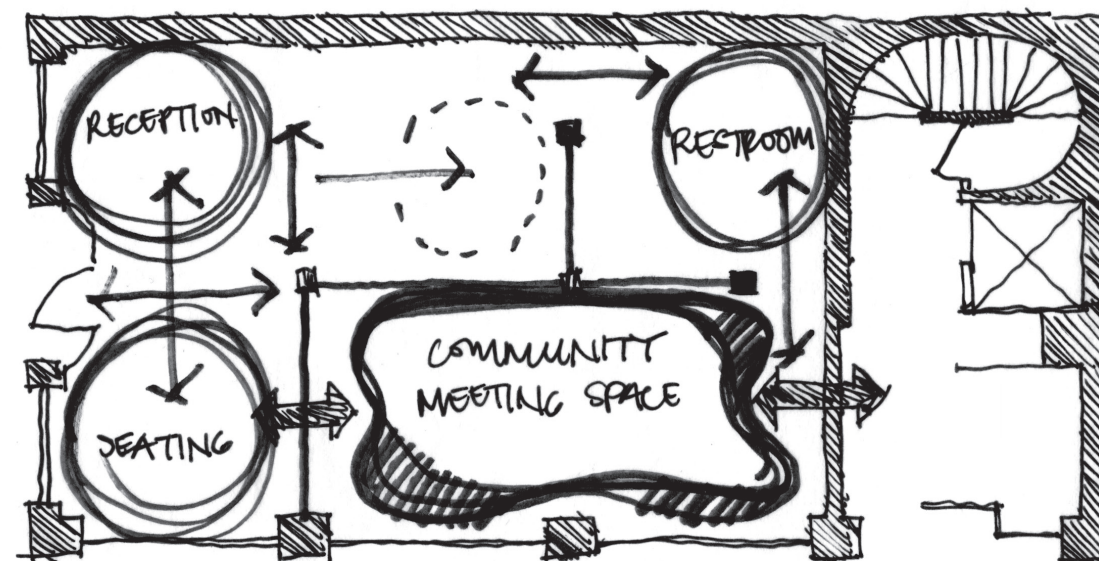
AUTOMOBILE ALLEY: 1920
 By 1911. (n.d.). Retrieved November 22, 2015, from <http://www.automobilealley.org/history>

AUTOMOBILE ALLEY: 2015
 Automobile Alley. (n.d.). Retrieved November 22, 2015, from <https://www.adventureroad.com/destinations/automobile-alley/>

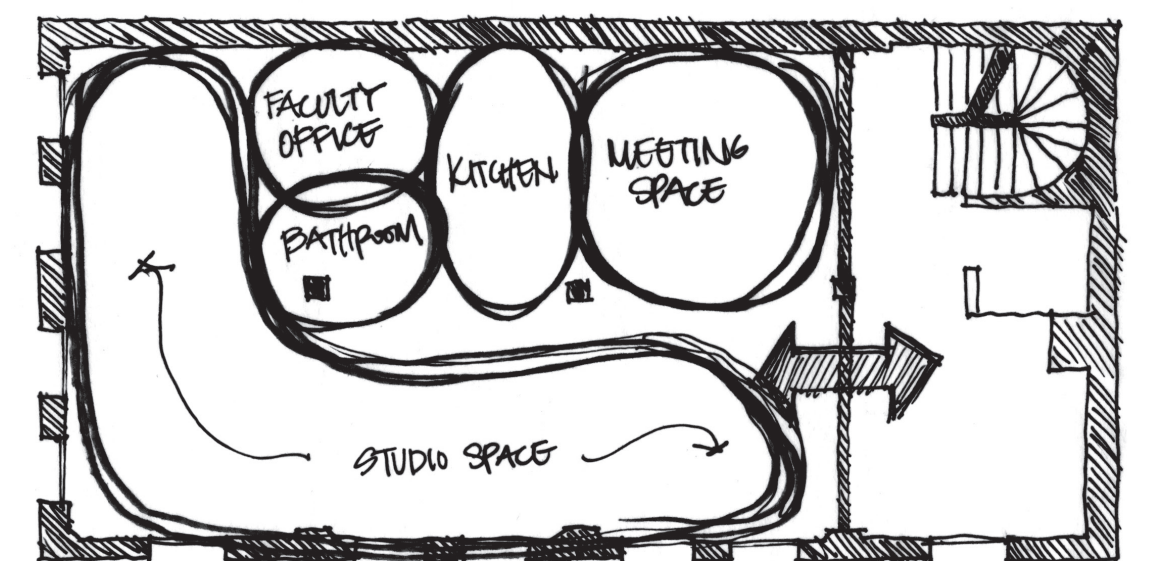


SITE PANORAMIC PHOTO
 taken by entrant, design well site - nw 6th street and broadway avenue, 2015, jpeg

PRELIMINARY DIAGRAMS



LOBBY AREA



TEACHING KITCHEN

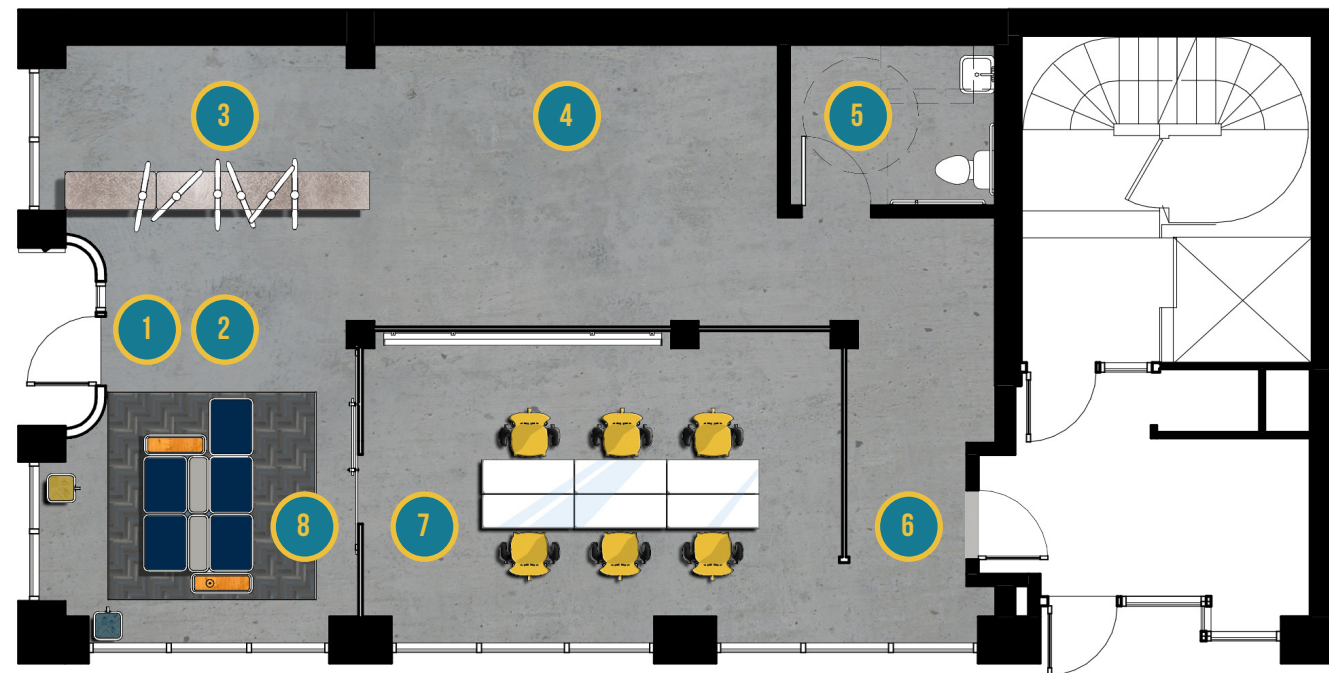


DESIGN Well

FLOOR PLANS

FIRST FLOOR KEY NOTES:

- 1 Main entrance to Design Well, from Broadway Avenue.
- 2 Sealed concrete flooring is used throughout the first level. It is easy to maintain and provides a smooth traveling surface for purposes of accessibility.
- 3 Reception desk to greet and direct people as they enter the space.
- 4 An art gallery provides space for student and community exhibitions. Gypsum board walls provide space for the display of art pieces and design projects.
- 5 A unisex, ADA accessible bathroom is located on the ground floor to serve the community, students, and faculty.
- 6 A door provides access to the second level.
- 7 A community meeting space is connected with the art gallery for collaborative activities. Tables and chairs are mobile, to provide maximum flexibility.
- 8 A cozy waiting area is included to provide seating for various activities and events at Design Well.



DESIGN WELL - FLOOR PLAN {FIRST FLOOR}

SCALE: 1/8" = 1'-0"

SECOND FLOOR KEY NOTES:

- 1 Main entrance to the second floor educational space.
- 2 Carpet tiles are used throughout the studio space to absorb noise and provide a durable surface for a high level of use.
- 3 The second floor includes a teaching kitchen, connected to a meeting space for healthy lifestyle demonstrations.
- 4 A unisex, ADA accessible bathroom is located on the second floor to serve community, students, and faculty.
- 5 A single faculty office is connected with the studio space. This way, the professor can maintain a close working relationship with the students as they work on projects.
- 6 A studio space with movable tables and chairs anchors the second level. Students can configure furniture in ways that benefit their specific tasks, maximizing collaboration.
- 7 Other types of modular seating are included to maximize a flexible workspace. The wooden structure also houses a screen for multimedia presentations.
- 8 A third type of seating is multi-leveled, with standing and sitting options to promote a healthier lifestyle within the studio environment.



DESIGN WELL - FLOOR PLAN {SECOND FLOOR}

SCALE: 1/8" = 1'-0"

STUDIO SPACE

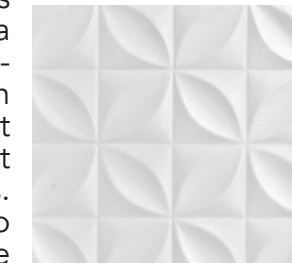


FINISHES & FURNISHINGS

The finishes and furnishings were selected to befit a modern university that accommodates the students as well as the community. The color palette is a foundation of blues and golds, the official colors of the affiliated institution in connection with Design Well. Different types of flooring are used throughout the overall space to serve different uses. Carpet and resilient flooring are easy to clean and maintain as well as handle the every day use by the constant flow of people. Neutral backgrounds of gray tones are accented by geometric patterns that provide welcomed pops of color. Counter surfaces are inspired by an industrial aesthetic. A silver reception surface provides a hint of sparkle, while kitchen counters are detailed in sealed concrete for a more utilitarian appearance. The materials are unified by the use of a white ceiling tile throughout.

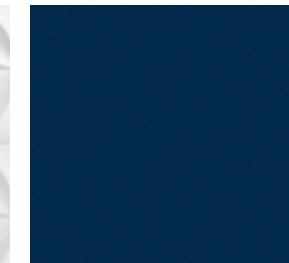
CEILING

CEILING - GENERAL

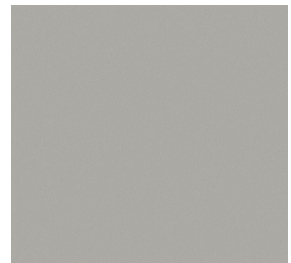


UPHOLSTERY

LOBBY - SOFA SEAT CUSHIONS

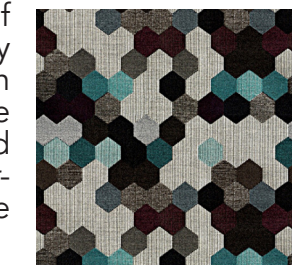


LOBBY - SOFA SEAT BACK

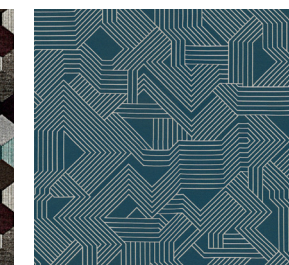


UPHOLSTERY

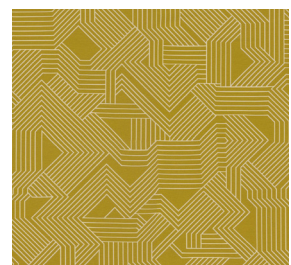
SEATING - UPSTAIRS MEETING RM.



LOBBY - SEATING/PILLOWS



LOBBY/STUDIO - SEATING & PILLOWS



FLOORING

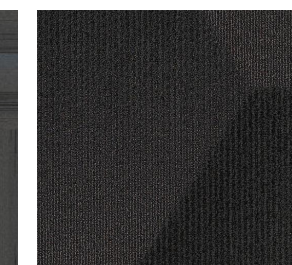
STUDIO/BATHROOMS/KITCHEN



LOBBY CARPET

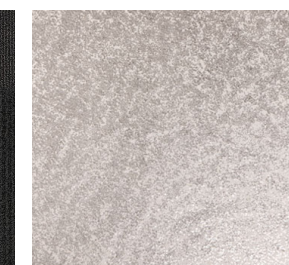


STUDIO/OFFICE CARPET



SURFACES

RECEPTION COUNTER



KITCHEN COUNTER SURFACE

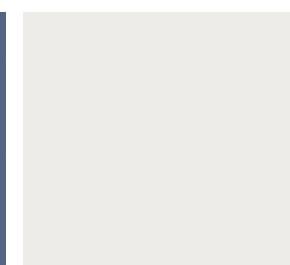


WALLS

COMMUNITY MEETING SPACE



PAINT COLOR - GALLERY



WALLPAPER - RECEPTION AREA



PAINT COLOR - ACCENTS



WALLPAPER - SECOND FLOOR



FURNISHINGS

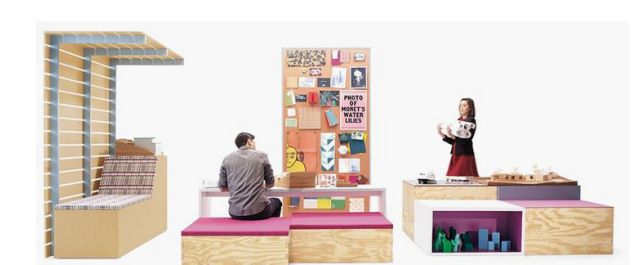
TABLE - CONFERENCE ROOM/STUDIO



TABLE - STUDIO



MODULAR OFFICE - STUDIO



SEATING - LOBBY



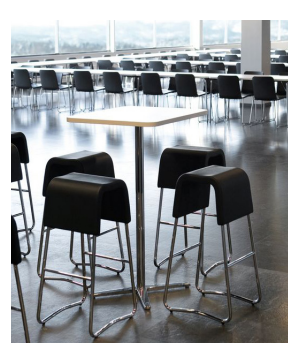
SEATING - LOBBY/STUDIO



SEATING - CONFERENCE/STUDIO



SEATING - TEACHING KITCHEN

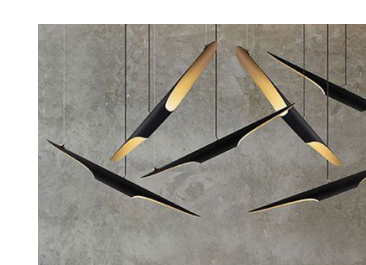


LIGHTING

LIGHTING - RECESSED LED LIGHTING THROUGHOUT



LIGHTING - RECEPTION DESK



LIGHTING - TEACHING KITCHEN

