

CREATIVITY BOOST



The design of Creativity Boost Studio reflects that of the city of Buffalo, New York. With a central form bringing together those areas that surround it, our studio space mimics the layout of the center of the city, with the staircase being a symbol for city hall, and the surrounding spaces symbolizing the adjacent areas of Buffalo. Each street, square, and building of Buffalo are important to its **history, culture, and life**. This is the same for the community design studio, located in the Joseph Ellicott Historic District. The central staircase, composed of a living "green" wall symbolizes the life of Buffalo and those who live and visit the bustling city. Materials are carried throughout the space to create a **cohesive environment**, relating each space to one another, and allowing visitors and employees to circulate with ease.

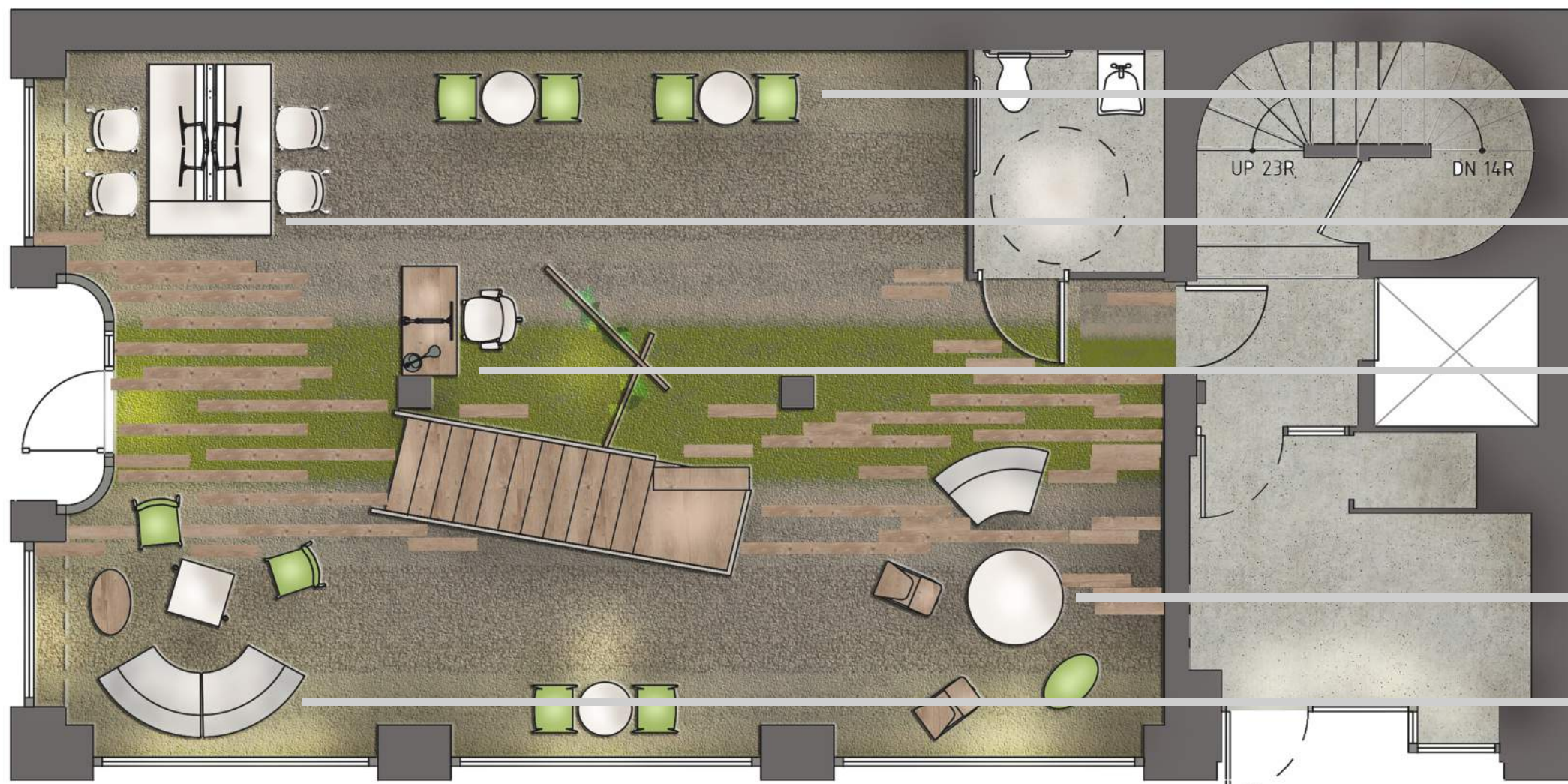
Creativity Boost Studio, located in Buffalo, New York, is an **innovative** addition to the city. The studio's intent is to bring community members, students, professionals, and visitors together to **learn, create, inspire, and share** design ideas with one another. The location, in the Joseph Ellicott Historic District, is ideal for such an innovative space, as it symbolizes the growth and revitalization that the city of Buffalo is currently experiencing. The Studio hopes to further **spread ideas** and knowledge of design throughout the city of Buffalo by giving users areas to meet, learn, create, and share. Meeting spaces are comprised of group seating and tables, including computers and power sources. Learning spaces involve open furniture areas with an abundance of materials and literature, as well as access to the internet. Creating spaces include group tables as well as individual tables. Sharing spaces are located throughout the space to create "touch down" points for interaction amongst users. The layout of furniture throughout the studio is intended to create **open and collaborative** spaces to encourage communication and learning.



Buffalo New York

Once being one of the nation's largest and wealthiest cities, in second half of the 20th century, Buffalo suffered from the after-effects of de-industrialization, resulting in an enormous population decline, high vacancy, increasing poverty and high unemployment. Despite these hard times Buffalo once faced, historic buildings and sites today tell the story of a grand and ever-evolving city, with all of the resources it needs to return to its glory. The location of Creativity Boost Studio in the Joseph Ellicott Historic District, of Buffalo, New York, is crucial as it is located in the core of the city. The historic district retains a significant number of high-style structures, many of which were designed by local and/or nationally prominent architects in the glory days of Buffalo. The district houses one of the earliest examples of the steel framed sky scrapers in the nation, Louis Sullivan's Guaranty Building, which the studio will be located next to. The area is **constantly evolving**, but retains a sense of unity through the overall quality and integrity of its architecture and the maintenance of its historic grid and radial street pattern. Locating the studio in this district will entice visitors and allow new experiences and memories to be made. Giving people a literal way of touching the past within the design of the future will inspire them to take initiative in the revitalization of the city. Creativity Boost Studio plans to utilize the opportunities presented by the unique characteristics of this area to its benefit in order to **bring new life** to the area. The aim of Creativity Boost Studio is to aid in bringing Buffalo's significance and impact back. The studio is an adaptive reuse project which **integrates the past and the future**. The studio promotes collaboration through design and architecture to reinforce the fact that Buffalo is returning to its glory, while also becoming something new. The Studio creates an environment to **inspire people**, to **revitalize the city**, to bring new energy, new ideas, new materials, and a rising sense of purpose and sustainability.





first floor plan

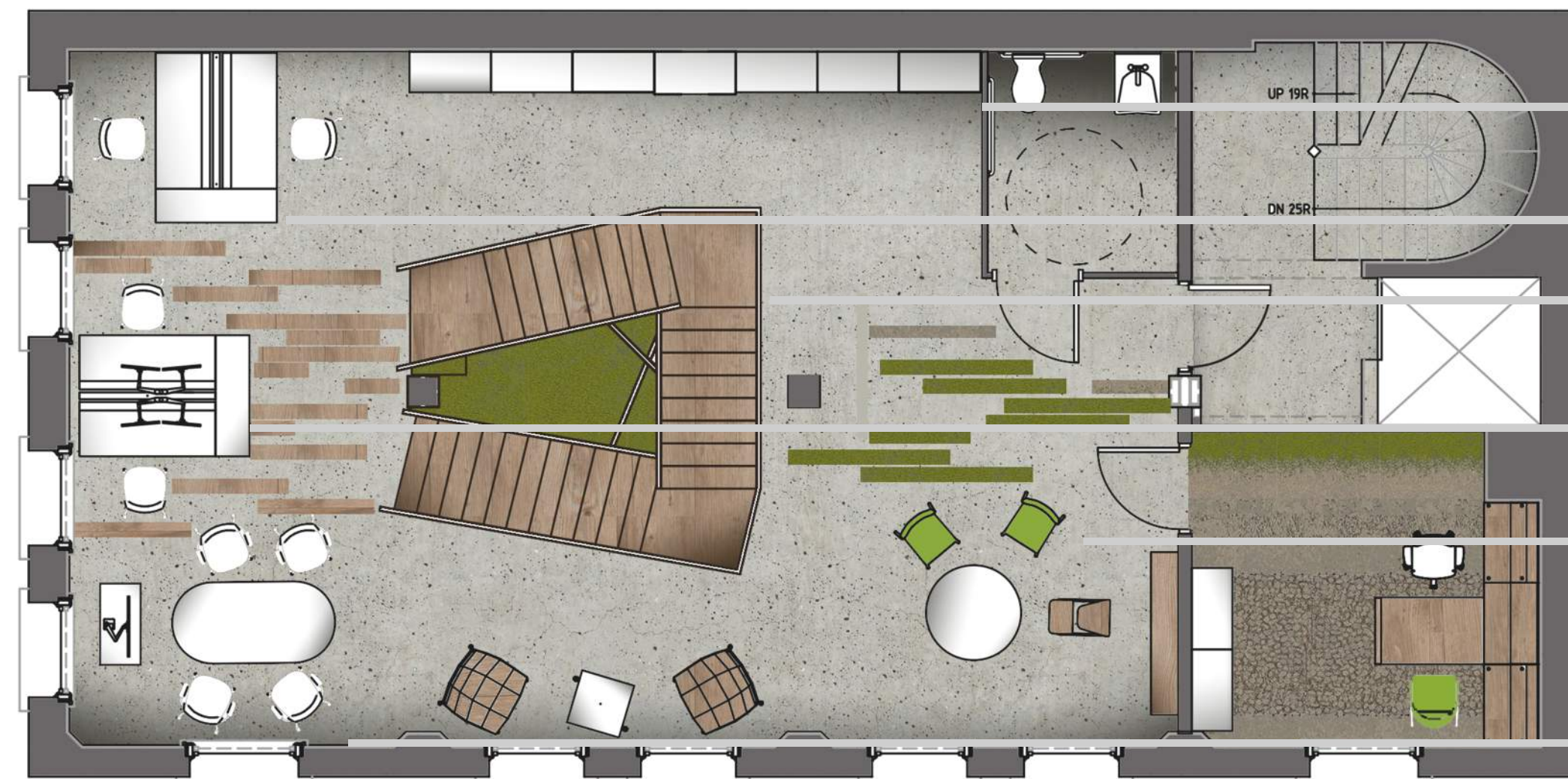
semi-private meeting tables
small space that enables focused or confidential work by one or two people

computer station

reception desk

informal meeting space

touchdown meeting space
areas for informal socializing, eating, or collaborating



second floor plan

storage

individual work space

living "green" staircase
geometric trellis form growing live plants surrounded by floating staircase

computer station

learning/resource area
flexible spaces for multiple activities from education to informal presentations

private office

group meeting space

The furniture utilized within Creativity Boost Studio are all products of Knoll. Knoll products are known to be **sustainable** as the company is mindful of how materials can better our environment. The **modular** furniture pieces are **lightweight** and **mobile** in order to create a constantly changing work space which can adapt to fit the needs of users at any given moment. Such activity spaces permit individuals and group members to shape their work experience by adjusting and reconfiguring elements in the space, which provides opportunities to express organizational culture. The color palette of materials in the space reflect the earth, while the finish choices mimic the **growth** of Buffalo. The "break away" floor pattern symbolizes the city's **rebirth** into new materials, technology, and life. The central staircase features a living "green" wall which spans both floors in order to create a **cohesive** feel within the space from any point. This staircase symbolizes the growth of the city which Creativity Boost Studio hopes to have an impact on.

