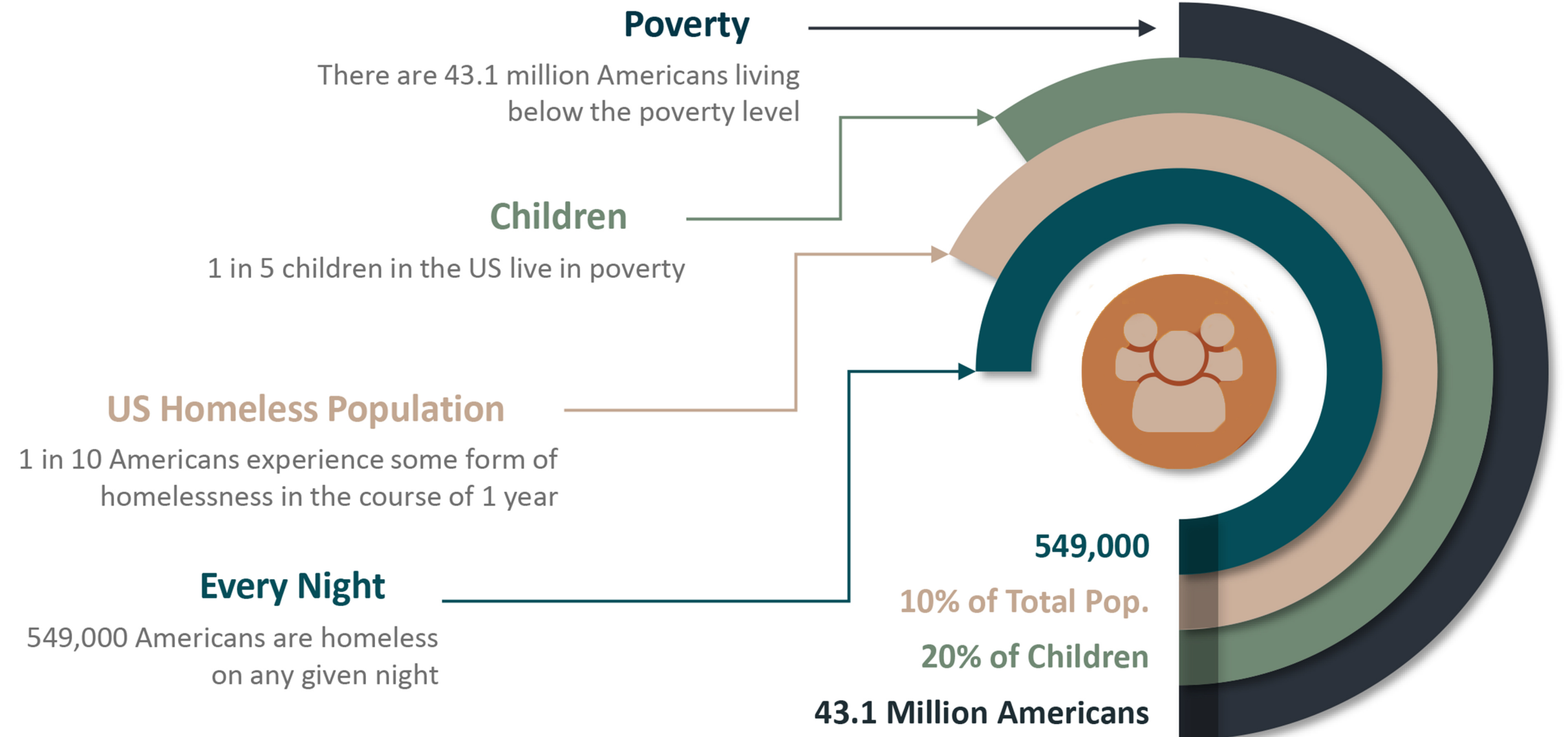
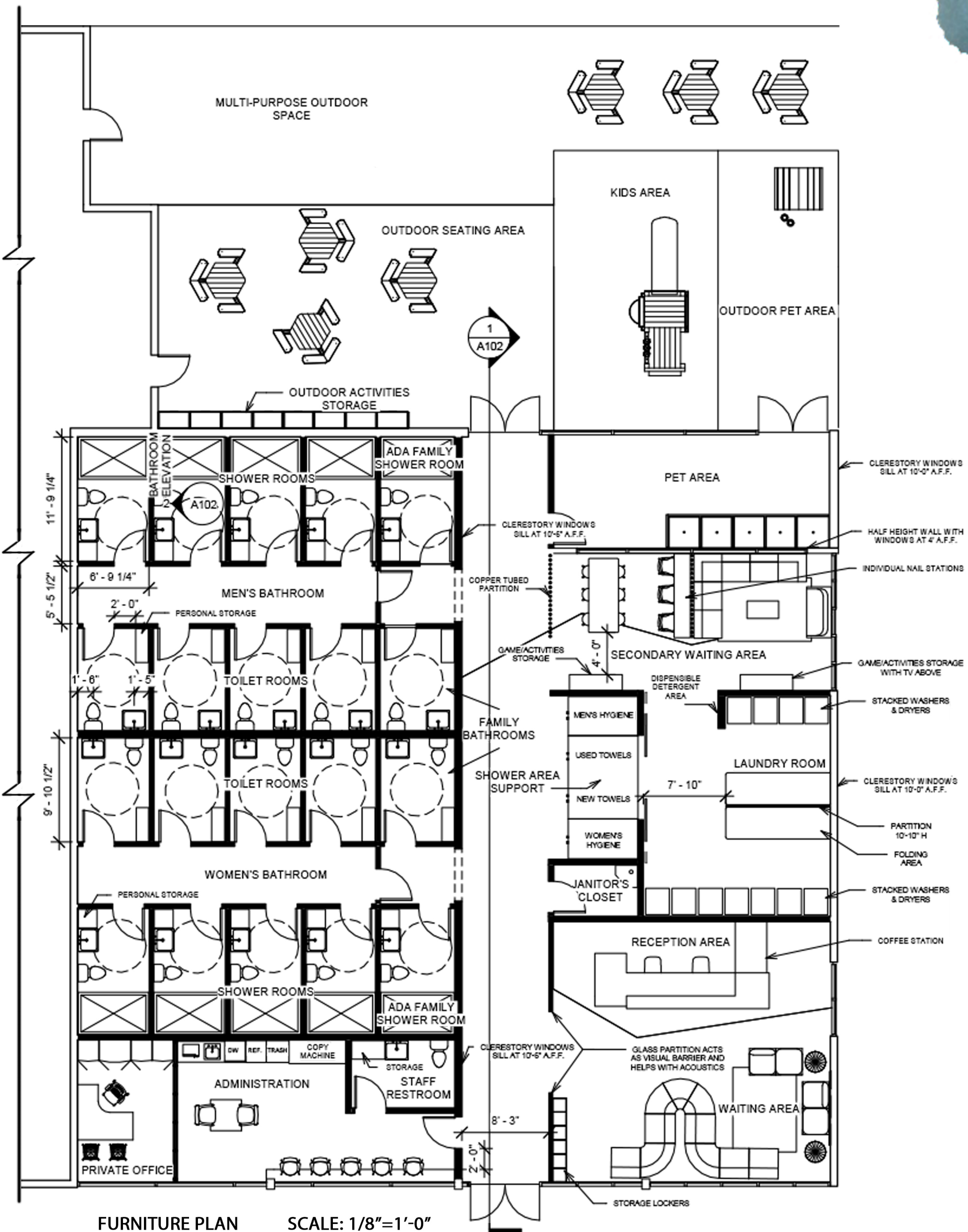




CONCEPT STATEMENT

Connect is a basic needs center for homeless people in Anderson, SC.

The center will provide amenities such as showers, bathrooms, laundry, childcare, and pet care. It is a safe, judgement free space for those who would otherwise not have access to these basic needs. The overall goal for the design is to create an environment that is inviting, safe, and promotes socialization and a move towards independence.



Statistics from: Hunger and Homelessness, HHWeek.org; Larkin Street Communications, larkinstreetyouth.org



UNDERSTANDING HOMELESSNESS

The term "homeless" means an individual or family who lacks a fixed, regular, and adequate nighttime residence. These residences could include: a publicly or privately-operated shelter, a car, park, abandoned building, bus or train station, airport, camping ground, etc. (Hombs, *Modern Homelessness*).

Although there are many misconceptions about homeless people "choosing" this lifestyle or lacking responsibility, the causes of homelessness are much more complex (Shen, "Architecture and Homelessness").

The South Carolina Homeless Report from 2019 states that one major reason people fall into homelessness is due to mental illness, domestic violence, or some other traumatic event. The report also stated that 52% of homeless people in SC are adult males.

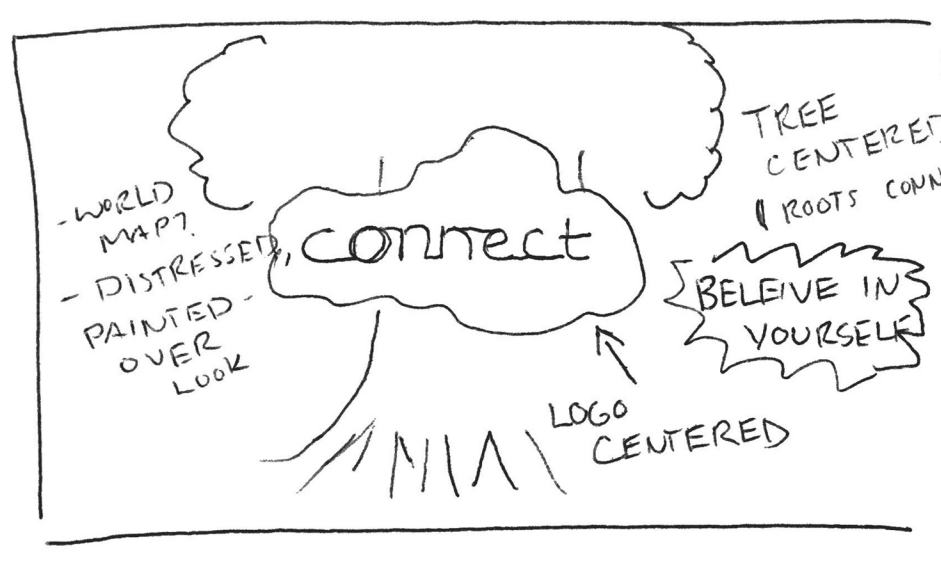
Most homeless families are headed by a single woman in her late twenties with an average of two children under the age of six. Ethnic minority groups are under the most risk. Many homeless families lack education and employment, and sometimes live doubled up with others and move frequently (Hombs).



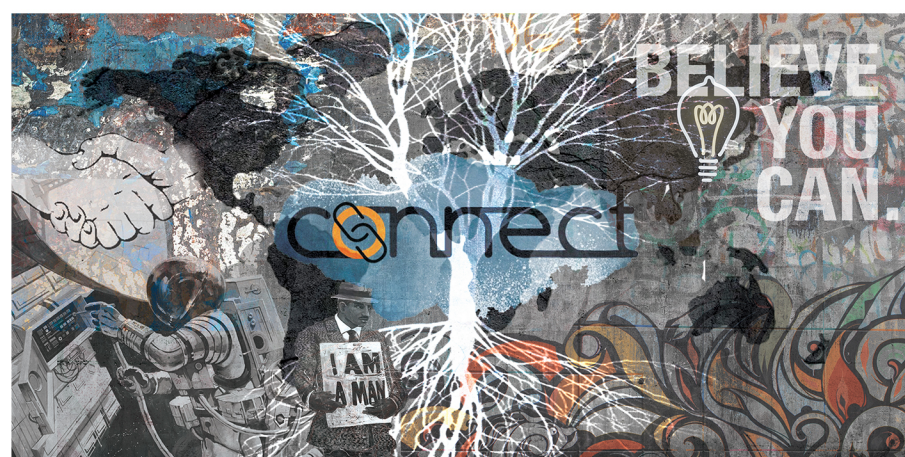
GAINING INSIGHT

Gaining initial insight for this project included primary and secondary research about the local homeless population in Anderson, SC. Primary research for this project started with a visit to The LOT project, a local non-profit dedicated to serving the homeless population in Anderson, SC by providing clothes and a hot meal during the week. To gain additional information about the crisis of homelessness in Anderson, we interviewed Seth Riddley, assistant to the county administrator. He provided insight about the causes of homelessness in this community, their needs, and how this facility could give assistance to those who need it most.

Secondary research included learning about Clean Start, another non-profit organization in Anderson which is an existing basic needs center that has been successful in providing assistance to the local community. They provide many of the same services as the Connect center, including laundering services and the provision of clothing and basic hygiene supplies. They encourage their clients to better and empower themselves by allowing them access to these basic needs and services. Due to their volunteers' generosity and efforts, visitors have found jobs, reconnected with families, and secured housing through external programs beyond Clean Start.



MURAL IDEAS:
THEMES: ENCOURAGEMENT, EMPOWERMENT
"CONNECT" IMAGERY: TREE ROOTS? SHAKING HANDS, CIRCUITS, UNIFICATION
 - URBAN VIBE - SELF-WORTH



The sketch above shows the progression of ideation regarding the mural in the laundry room from beginning to end. Themes such as encouragement, empowerment, and self-worth played heavily into the objects, imagery, and phrases featured in the final product.

RENDERING DESCRIPTIONS:

- 1. Reception**
This area is the first thing guests see when they enter the Connect center. It has been designed to be a welcoming and calming place for visitors to check in and become oriented with the amenities offered within the complex.
- 2. Main Waiting Area**
Guests can sit here if there is a wait time for amenities, if they wish to watch the news, or simply want to escape the bustle of the streets.
- 3. Rear Exterior**
This area has been designed as a multi-purpose outdoor space, hosting a pet area, a small playground, picnic tables, and a green space for yoga or other activities. The entire yard is covered by a shade, providing vital protection from the sun during the warmer months of the year.
- 4. Building Section - Main Waiting Area, Shower Support, Second Waiting Area**
This section shows the view from the hallway looking towards the east side of the building. Entrances to the reception and secondary waiting area are shown, as well as the shower support area, which stores towels and hygiene supplies for the visitors to use.
- 5. Second Waiting Area**
This space allows people to socialize with others through activities or relax as they wait for their laundry and also has visual access to the pet area.
- 6. Shower Room Elevation**
Each shower room has a sink, toilet, and accessible shower. Air plants have been suspended above the shower area in order to provide better air quality and absorb excess moisture.
- 7. Laundry Area**
Guests can come to the laundry area to wash clothes, with detergent provided. A local artist was commissioned to make a mural for the laundry room wall, with a central theme of empowerment and positivity.



Safe Place

Safety is an important aspect of the design of this facility, including visible entrances and exits within each space, easy wayfinding, and secure bathroom and shower areas designated by gender with flexible options. Each staff member in the Connect Center is trained to provide assistance in critical situations.

Inspire

Building's design inspires visitors to express themselves through activities, social interaction, and staff care. In order to make each visitor feel valued and accepted, the center has been designed to have an urban and modern appearance, using cost-efficient materials with a high-end look.



Basic Needs

Each visitor's mental, and emotional needs are met through providing basic care and access to needed facilities. The use of natural light and calming colors also make the space feel safe and comforting without evoking a sense of confinement.

Sense of Community

Socialization is encouraged and visitors are given the opportunity to interact with others in a welcoming environment.

Empowerment

Visitors are given the skills and knowledge they need to be successful and move towards self-sufficiency, without fear of judgment. Staff members develop relationships with regular visitors and create trust through patience and care.



Reception Desk



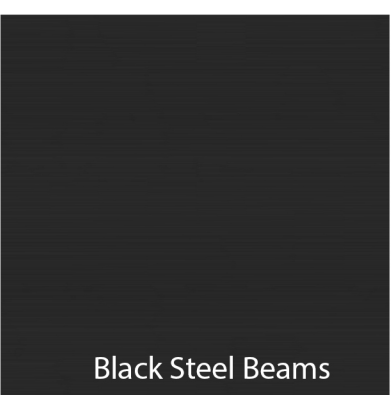
Accent Flooring



Copper Laminate (ceiling and wall partition)



Glass Partition



Black Steel Beams



6

7