

BREAKWATER

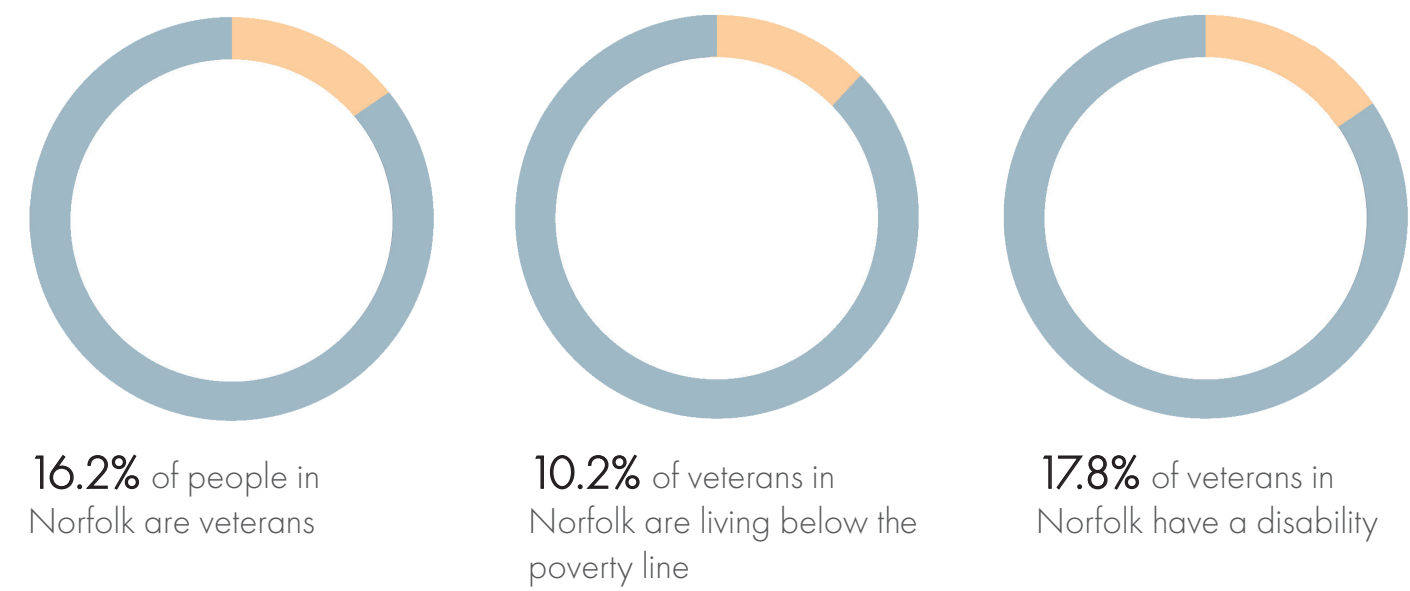
Background + Branding

Breakwater is a living community for veterans located in downtown Waterside Norfolk, VA, with a focus on socialization, rehabilitation, wellbeing, and **re-integration**. Norfolk has a significant population of veterans as it has the largest naval base in the world. With Norfolk as the **coastal** core of the metropolitan area, it offers a variety of events, historic walking and biking trails, maritime and military cultural attractions, and ever-changing scenes of their active **harbors**. The building is located with a view of the Elizabeth River and oriented so they courtyard and curtain walls face south and receive the most sunlight. The site is conveniently located near the light rail as well as several hospitals.

A breakwater is a barrier that protects a harbor from rough seas. The name of the space is inspired by this structure to symbolize a safe environment for the veterans. Oranges and blues used in Breakwater are derived from harbor surroundings.

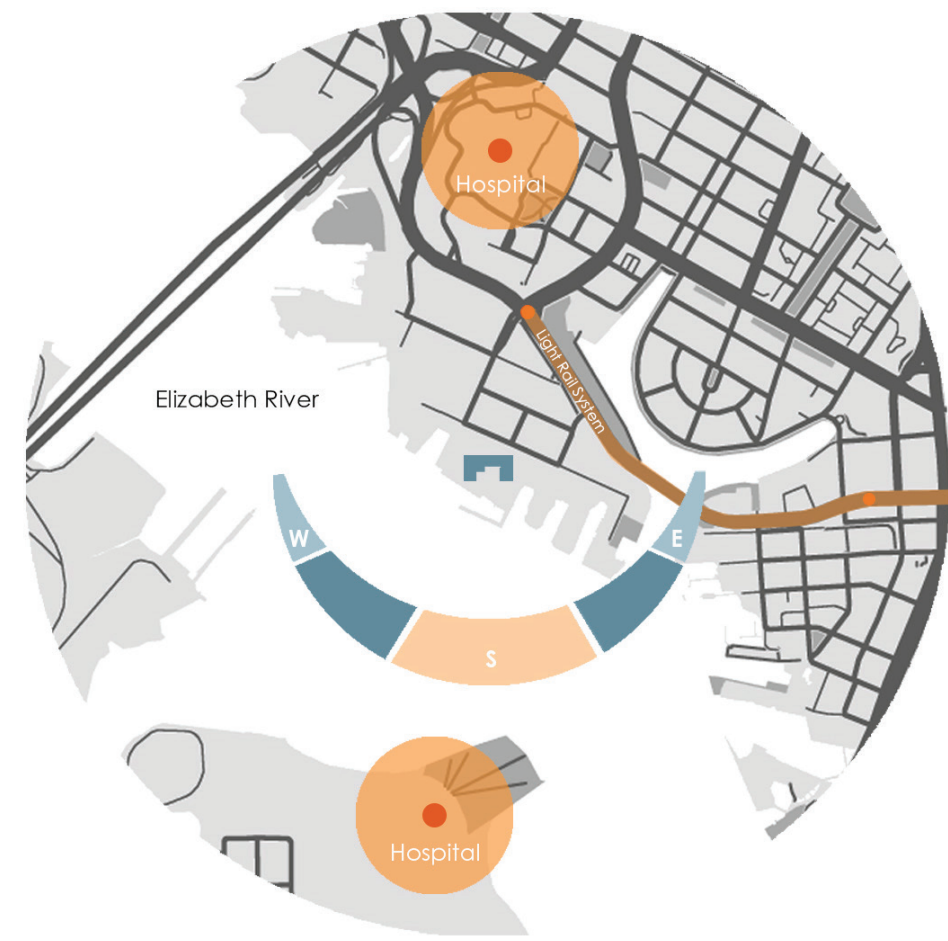
Concept

A harbor provides safe **anchorage** and **protection** for those who pass through it. The residential units that wrap around the building act as a breakwater which creates the **calm** environment within a harbor. This serves as a **transition** for veterans who are looking for a break from the stress of civilian life. The balcony surrounding these units reinforces the barrier which protects the shared spaces within the building. Just as an anchor keeps ships **secure**, the furniture, materials, and colors are lighter on top and heavier on the bottom to ground the users of the space.

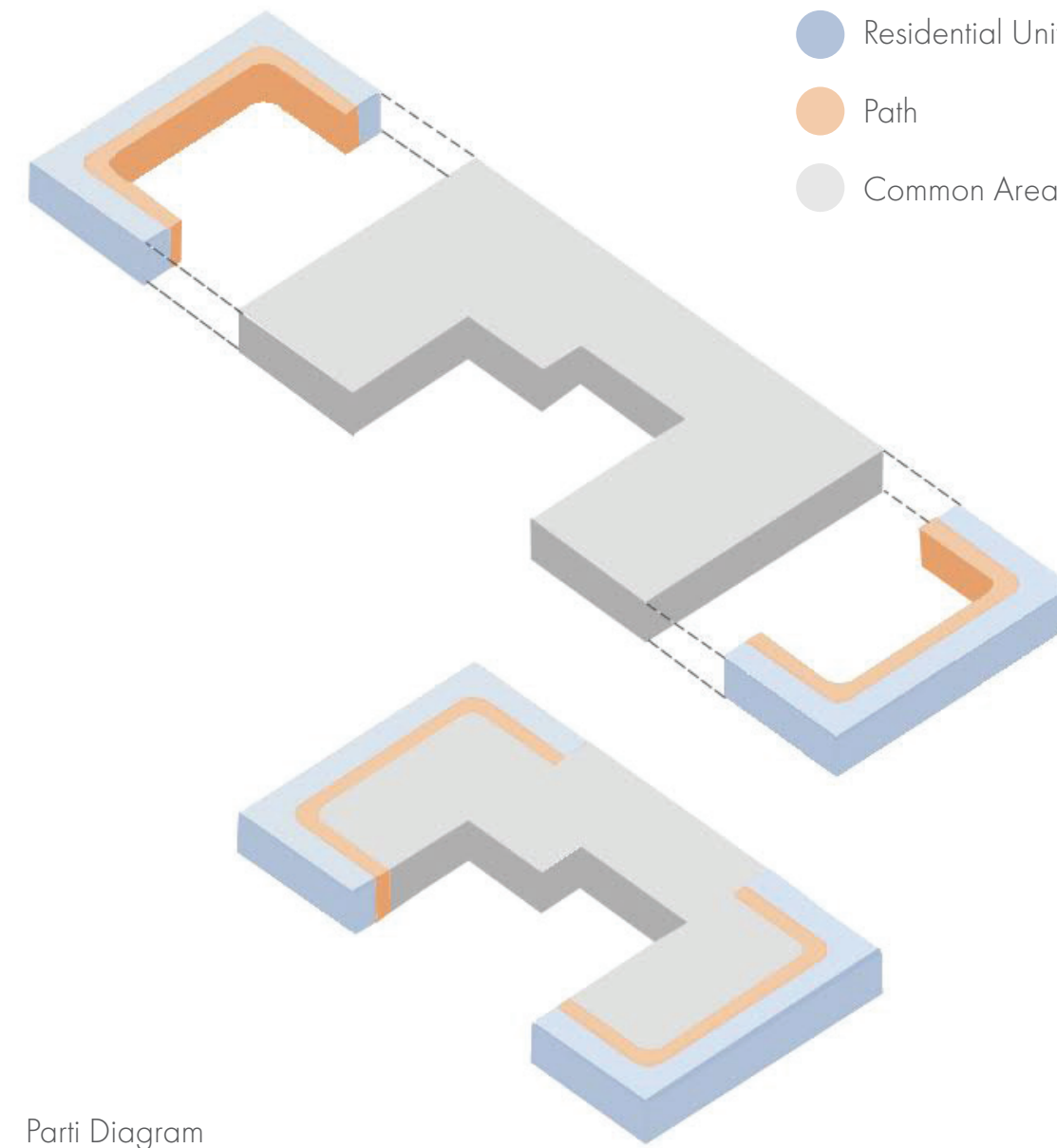


Research Backed Design Decisions

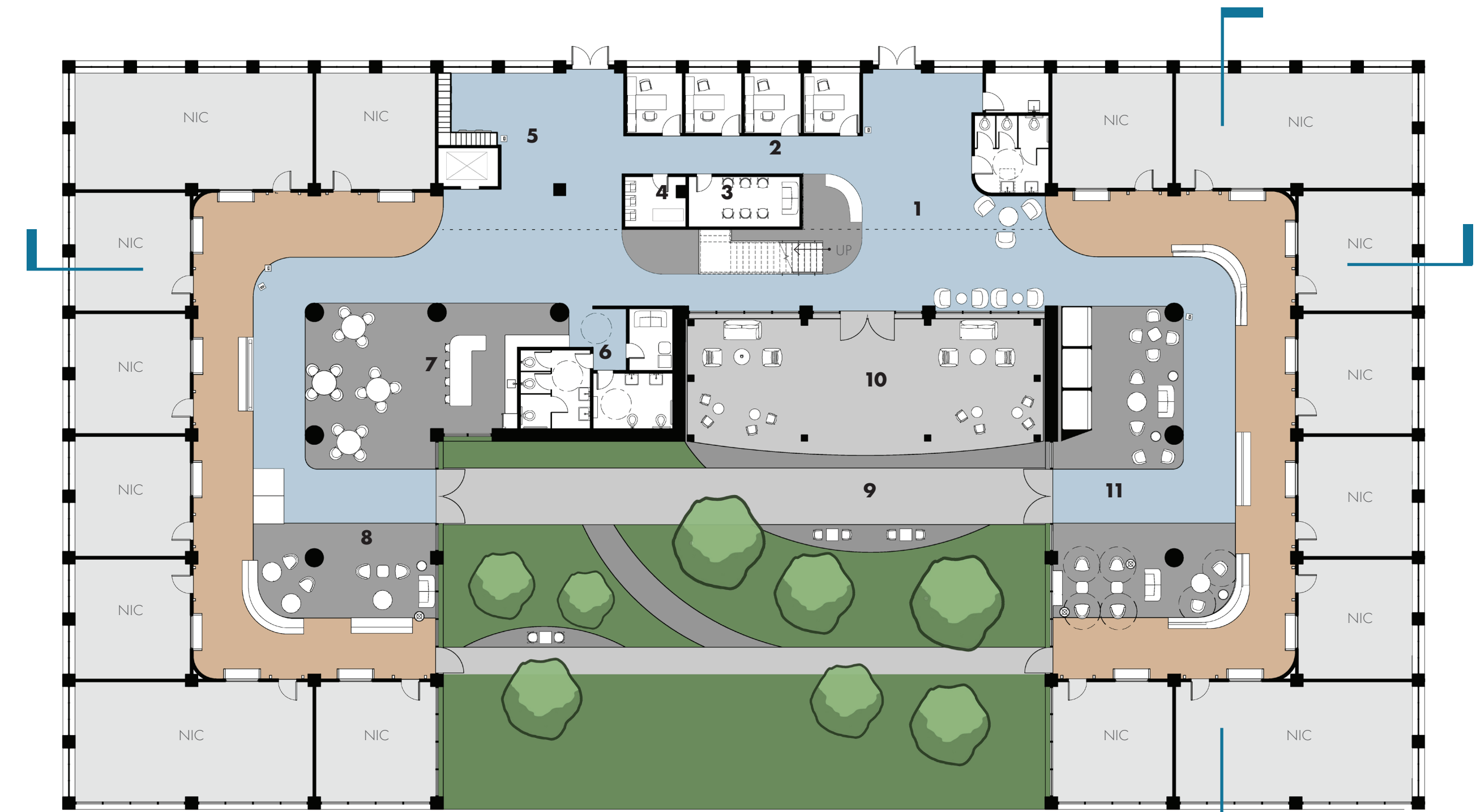
Wide pathways and rounded corners are utilized throughout the space to provide strong sight-lines and alleviate stress that can be caused by way finding. Light colors and natural light are used to energize the space and encourage active participation within the shared areas. The balcony and walkway envelop the space to encourage movement (Smith, 2020).



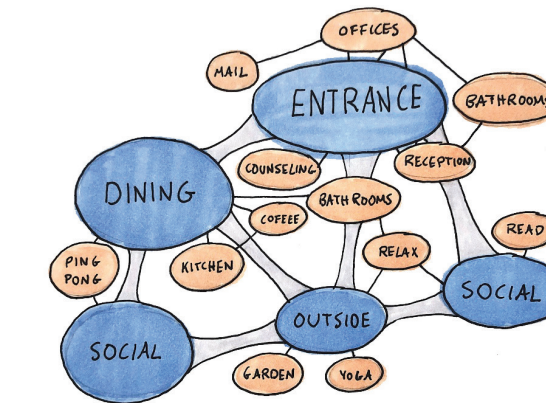
Site Diagram



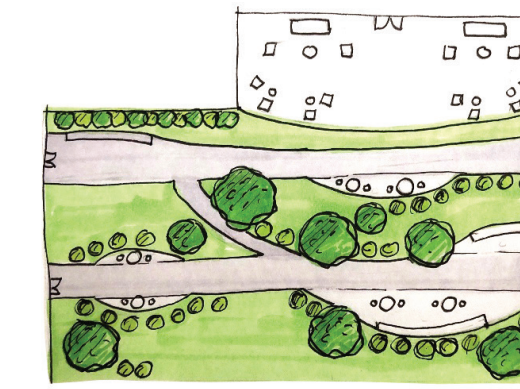
Parti Diagram



Floor Plan Level 1: NTS

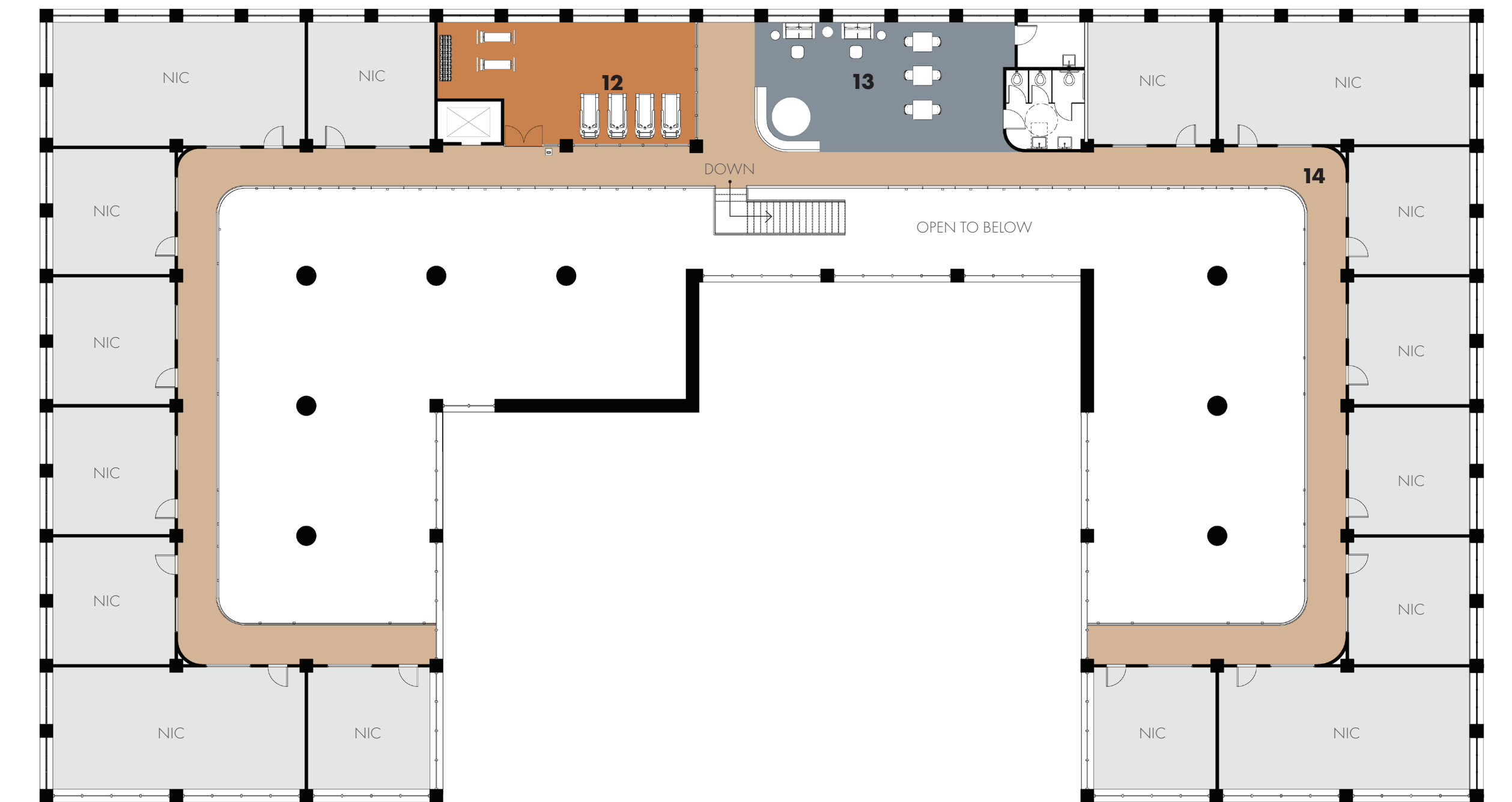


Spatial Diagram



Courtyard Marker Render

- 1 Main Entry, Reception, + Restrooms
- 2 Private Offices
- 3 Counseling
- 4 Business Center
- 5 Mail Room + Elevator
- 6 Restrooms + Lactation Room
- 7 Kitchen and Dining
- 8 Social Lounge
- 9 Courtyard
- 10 Pergola
- 11 Quiet Lounge
- 12 Gym
- 13 Social Lounge
- 14 Mezzanine



Floor Plan Level 2: NTS



North Section: NTS



East Section: NTS



ATLAS upholstered chair
Parfa design



Lounge Chair
Joel



SWOOP sectional modular sofa
Herman Miller



Armchair
Grace



Moon Light wood armchair
Capdell



Colourform sofa
Herman Miller



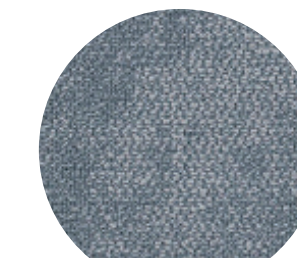
Bar Stool
Vitra



Su Cafe Table
Emeco



Tribeca Cocktail Table
Mitchel Gold



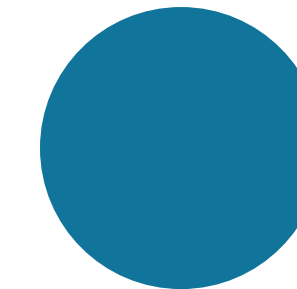
Eco Solutions Nylon
Shaw Contract



Refined Oak Style CA308
Shaw Contract



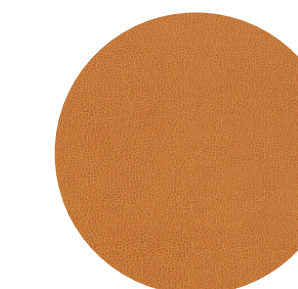
Siltech Grain
Karnegie



Pantone 7468 C



#2000 Terrazzo
Terrazzo



Siltech Grain
Karnegie

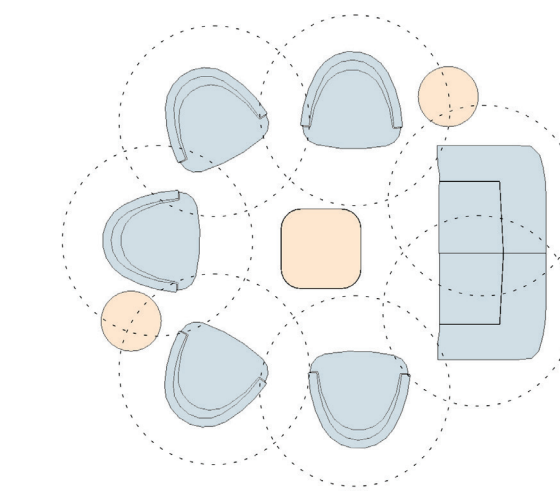
Social Sustainability

Social sustainability ties the users of a space with each other and with the surrounding area by combining the physical and social realm into a built environment.

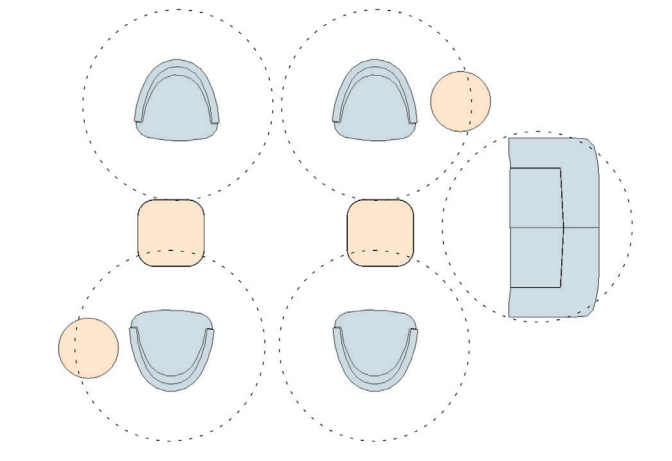
Spaces such as the social lounges and the courtyard encourage community members to socialize both outside and inside. The open concept allows for different areas to blend together which helps foster connections amongst users. These pathways let users choose what they want to do, allowing them to have control of their own experience (ADEC).

Materials

Copper is used on high touch surface areas because of its antimicrobial properties. The materials were chosen for their durability, chemical resistance, antimicrobial properties, clean-ability and abrasion resistance.



Pre-Pandemic Seating Diagram

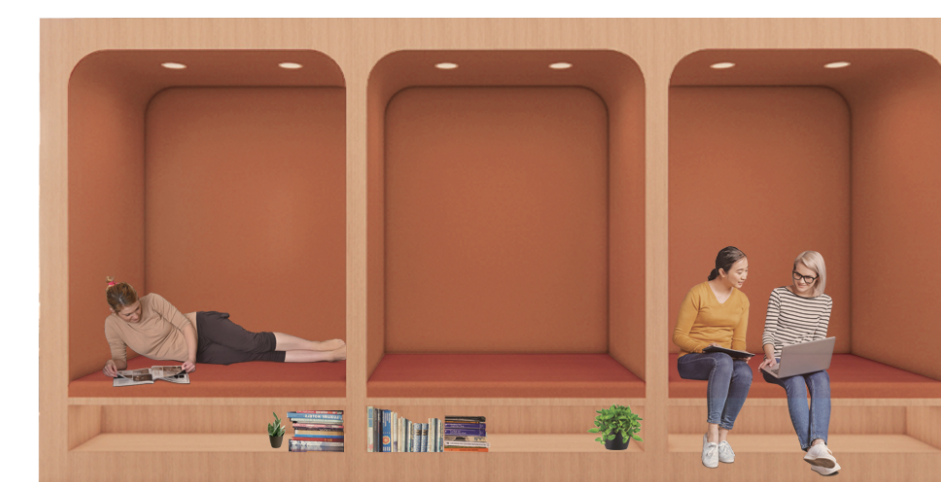


Pandemic Seating Diagram

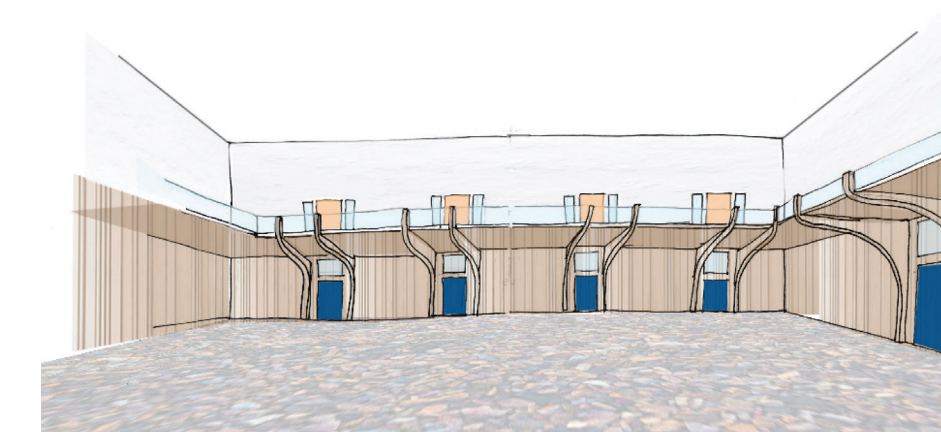
Covid-19 Considerations

The circulation paths are wide to accommodate social distancing and seating on either side of the pathway creates an opportunity for neighbors to safely socialize. Sanitation stations are located throughout the space to encourage cleanliness.

The diagrams above illustrate two different seating arrangements. In a pandemic world, it is critical to provide clear circulation to all seating options and reduce the number of seats. By providing individual tables, the shared surfaces within a space are limited (Steelcase, 2020).



Custom Millwork Nook



Process Facade Sketch



Courtyard Perspective

*Collaborative & Social Space Design After COVID-19." Steelcase, 8 Oct. 2020. www.steelcase.com/research/articles/topics/post-covid-workplace/better-together-future-shared-spaces-office/.
Smith, "PTSD in Military Veterans." HelpGuide.org. www.helpguide.org/articles/ptsd-trauma/ptsd-in-military-veterans.htm.
Roads, Greater Hampton Roads. "Greater Hampton Roads - Indicators: Veteran Population." www.greaterhamroads.org/indicators/index/view?indicatorId=5329.
Solutions, ADEC ESG. "What Is Social Sustainability?" Adec Innovations. www.aig.ahec-innovations.com/about-us/facts/what-is-social-sustainability/.
Veipa, Jonathan E. "Those Who Served: America's Veterans From World War II to the War on Terror." Census.gov, June 2020. www.census.gov/content/dam/Census/library/publications/2020/demo/aci-43.pdf.