



Concept

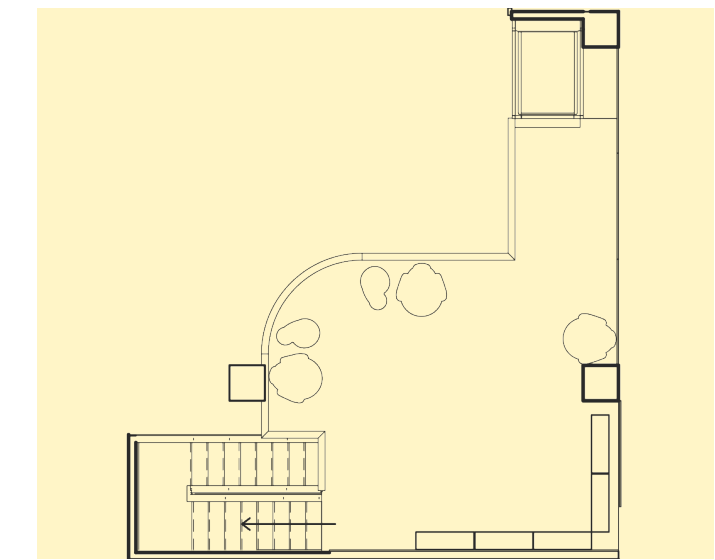
Bonsai is an innovative living facility equipped with effective and necessary tools and resources to help military veterans reintegrate into a healthy, well-rounded civilian life. The symbolization of the bonsai, a tree which represents harmony, peace, and balance, is incorporated throughout the building using natural elements and promoting nature. Through an earthy color palette, sustainable materials, and free-flowing forms, the health and well-being of everyone is encouraged in each space. By utilizing a balanced floorplan and implementing curved lines, rounded edges, and organic shapes help individuals suffering from PTSD and physical limitations. Harmonious materials and finishes were carefully picked with consideration of sanitation and health safety, encouraging a peaceful mind and overall health. The peaceful colors and integration of nature consider the mental health and wellbeing of the residents and dissuades any notion of loneliness or isolation.



Location

Downtown Waco is the perfect location given the close proximity of the Brazos River as a perfect scenic view. Useful resources also played a factor in choosing this location, such as the VA office, the Salvation Army and walking distance of potential jobs and shopping.

Cafe - Second Floor



SCALE: 3/32" = 1'-0"

Research

Statistics show that veterans experience many hardships and difficulties when retiring from the military and reintegrating with society as a civilian. In an effort to combat these, specific tools, spaces, and resources were implemented throughout the space in hopes of offering balance and support. Social sustainability can be improved by various social activities in an effort to combat loneliness and depression, which in turn also helps those struggling with PTSD. Given current circumstances, certain health and sanitation measures were accounted for. Considering this is a close quarters living facility, health safety is the forefront of the concept and all selections were made based on extensive research on the COVID-19 virus.

Floorplan Key

- 1** SECURE ENTRY
- Key-Card Entry System
- Temperature Screening
- 2** LACTATION ROOM
- Privacy Window Film
- Remote-Controlled Shades
- 3** FAMILY RESTROOM
- Hands-Free Fixtures
- 4** PRINTER/FILE ROOM:
- Keypad Access
- Acoustic Panelling
- 5** MULTI-PURPOSE FACILITY
- Partition Wall for Flexibility
- 6** RECEPTION
- Wheel-Chair Accessible Desk
- Acoustic Panelled Pendant Fixtures
- 7** WAITING ROOM
- Open View to Courtyard
- Privacy Barrier for Clients
- 8** COMMON CORRIDOR
- Distributed Rest Stops
- Interior Landscaping
- 9** BLDG ADMIN OFFICE & SUPPORT CENTER
- BLDG Manager
- Manager of Veteran Support Service
- Head of Counseling Service
- Admin Assistant
- Glass Partitioned Hallway
- 10** CAFE/LIBRARY
- Second Story Library
- First Floor Cafe
- Interior Landscaping
- Wheelchair Lift
- 11** GENDER-NEUTRAL BATHROOM:
- Rest Area
- Hands-Free Fixtures
- 12** DINING CAFETERIA
- Large Kitchen For Multi-Use
- Adjustable Seating
- Private Booth Seating
- 13** FLEX ROOM
- Partition Wall for Flexibility
- 14** JANITOR
- Secure Locking System for hazardous Supplies

Floorplan



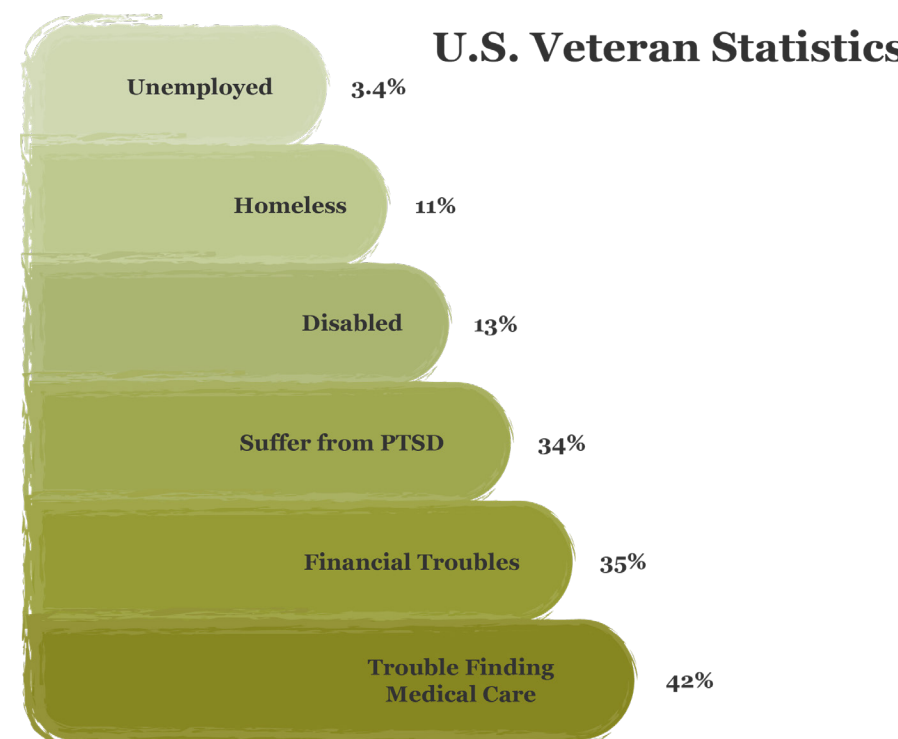
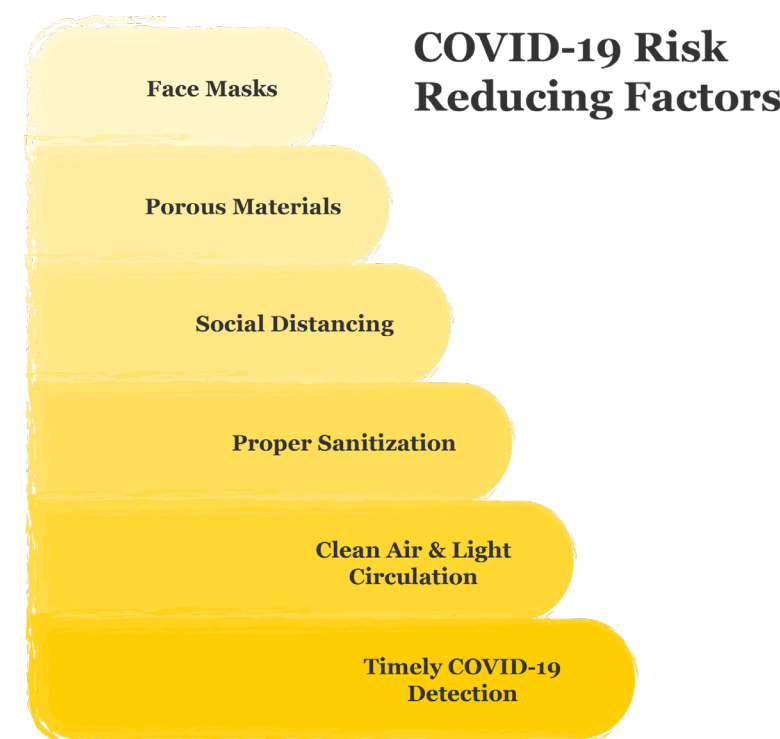
BONSAI VETERAN LIVING COMMUNITY

SCALE: 3/32" = 1'-0"

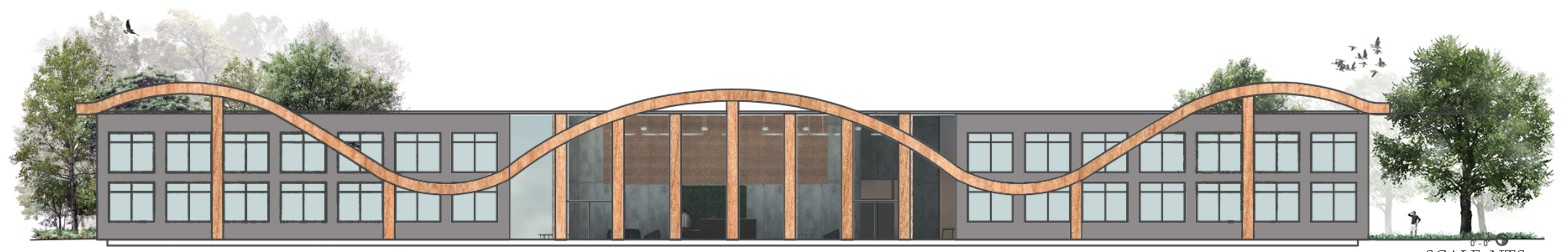
Materials & Finishes

Since COVID-19 thrives on hard surfaces, porous materials were chosen to eliminate the spread of the virus. This also helps reduce the risk of exposure for high traffic areas that may not be easily or consistently cleaned after every use. Materials and finishes were also chosen for its durability for heavy use.

-  CANVAS DUCK COTTON
- Booth Seating
- Accent Seating
-  CERAMIC TILE
- Kitchen Wall
- Restroom Wall
-  LEATHER
- Waiting Area Seating
-  LEATHER
- Benches/Rest Areas
-  WOOD
- Wall Cladding
- Columns
- Staircase Railing
- Flooring
-  COTTON
- Accent Seating
- Dining Chairs



Exterior Facade



SCALE: NTS

Cafe/Library



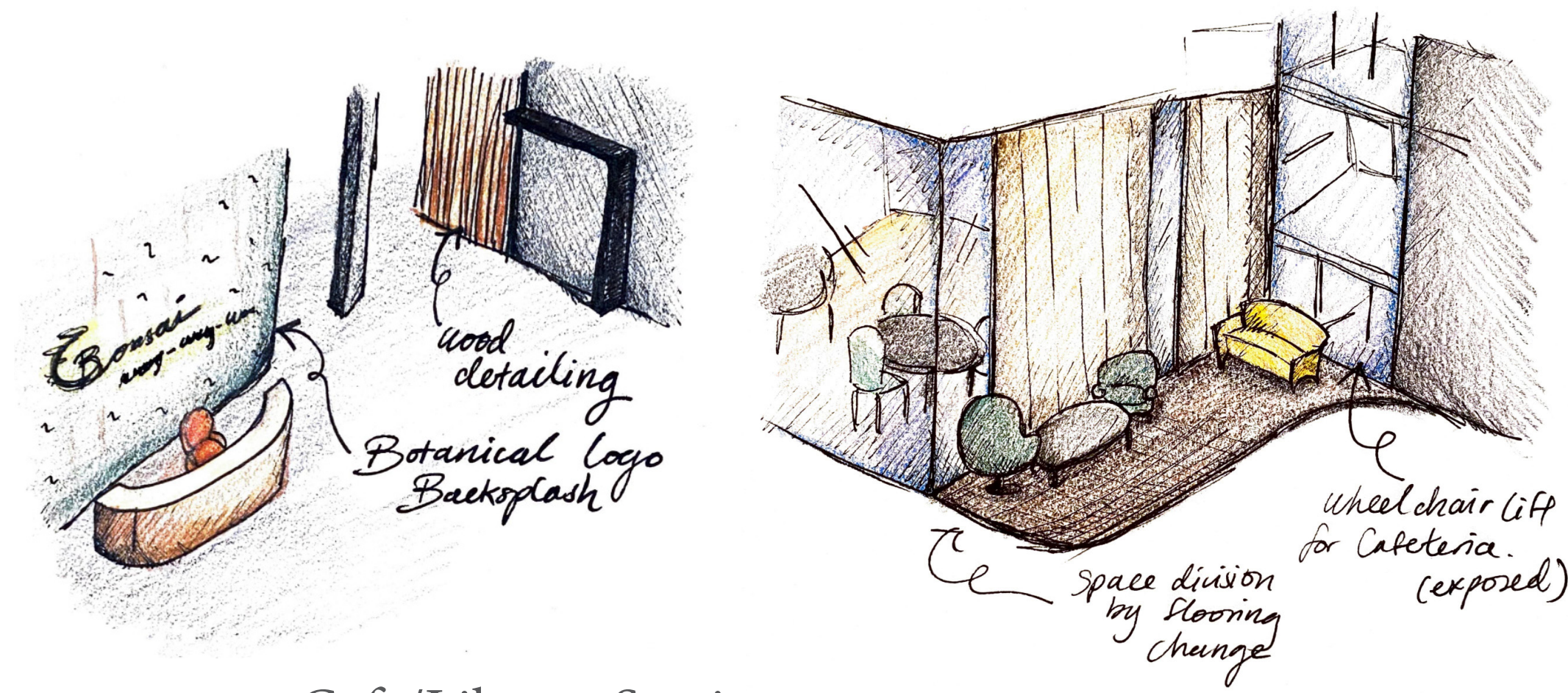
Social Seating



Residential Facade



Sketches



Cafe/Library Section

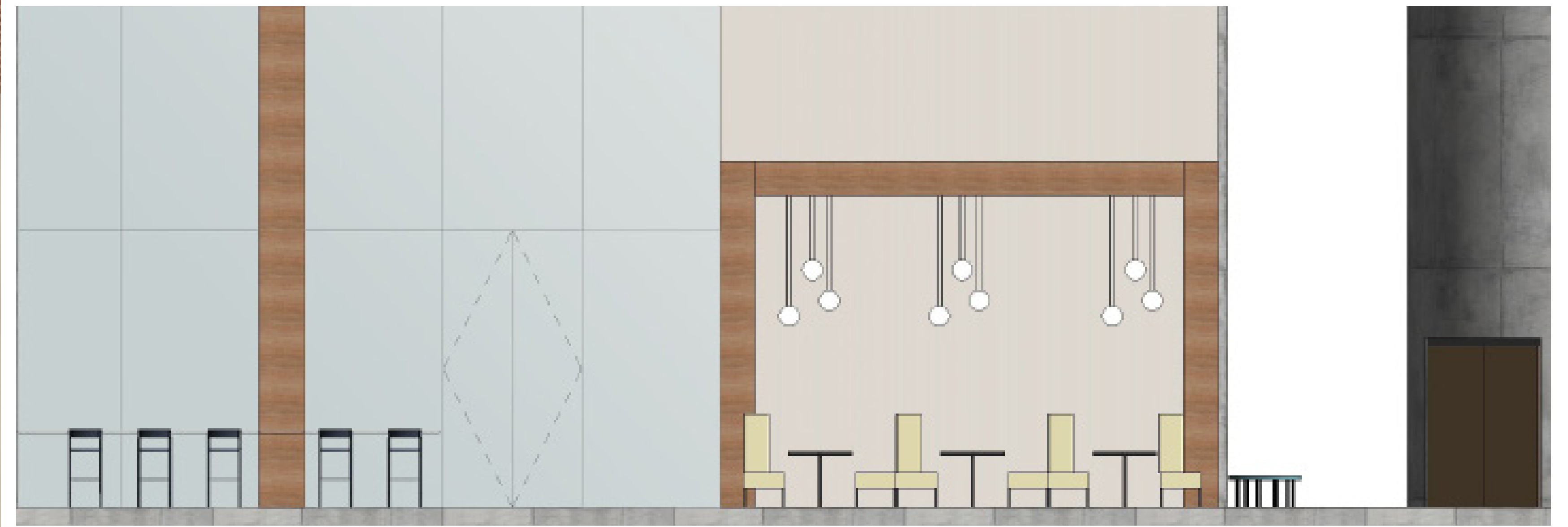


Cafeteria Section

SCALE: NTS



Secure Entry



SCALE: NTS

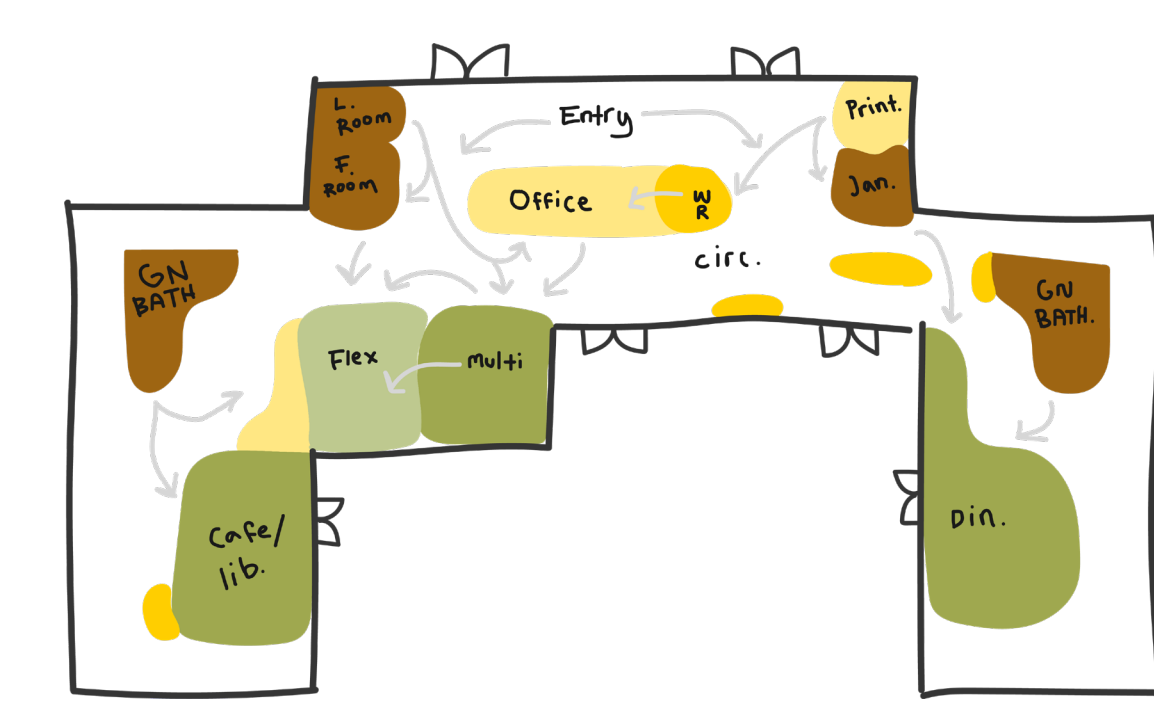
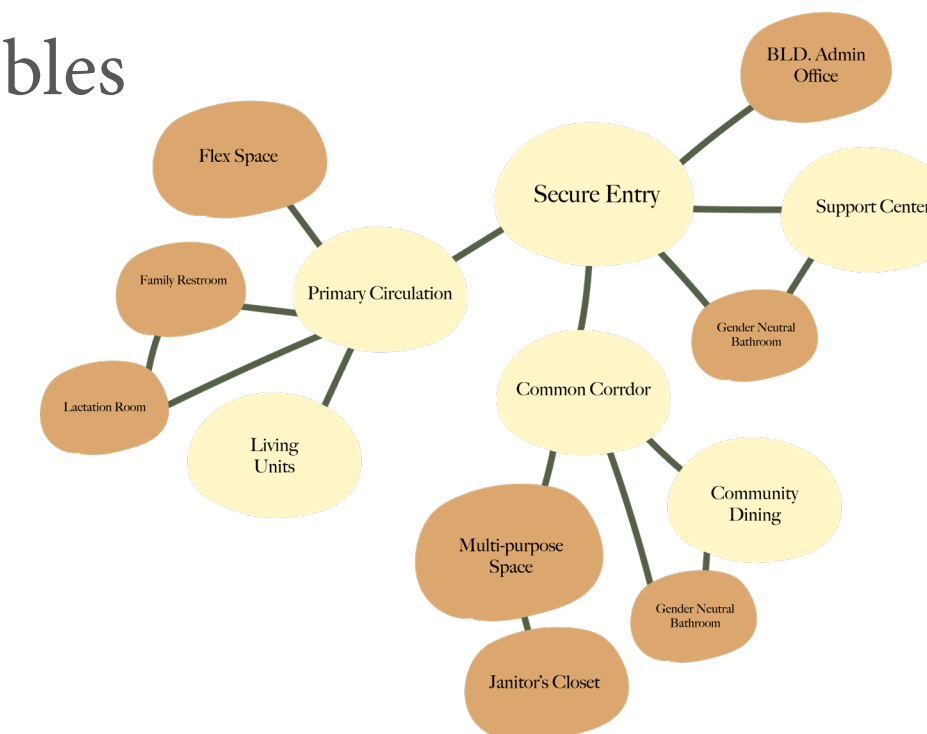
Cafeteria Elevation

The kitchen within the cafeteria offers plenty of storage space and food prep space, which is ideal for vendors to use or groups of residents. This space is designed to encourage new social interactions while still maintaining social distancing when necessary.



SCALE: NTS

Bubbles



Bibliography

<https://docs.google.com/document/d/1FEz3NZmBBv5-MBox-61MOc1NvCerrukRKfB5FQ7Y-WR0/edit?usp=sharing>