

BEYOND THE LOOM

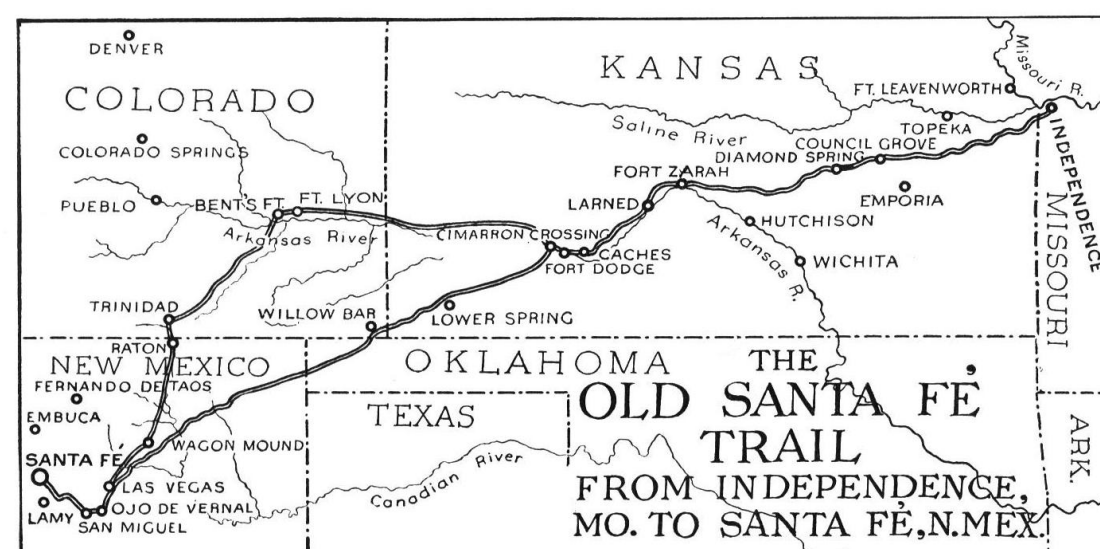
CONCEPT STATEMENT

Behind the scene of art works is always attractive for people and makes them more familiar with the essence and the background of the artwork. Thus, while we were designing a place which integrates the work and life of an artist couple from Navajo, we decided to satisfy visitors scene of curiosity about the Navajo tribe's customs and facts that are hidden **beyond the loom** by including some concepts and motifs of their life.

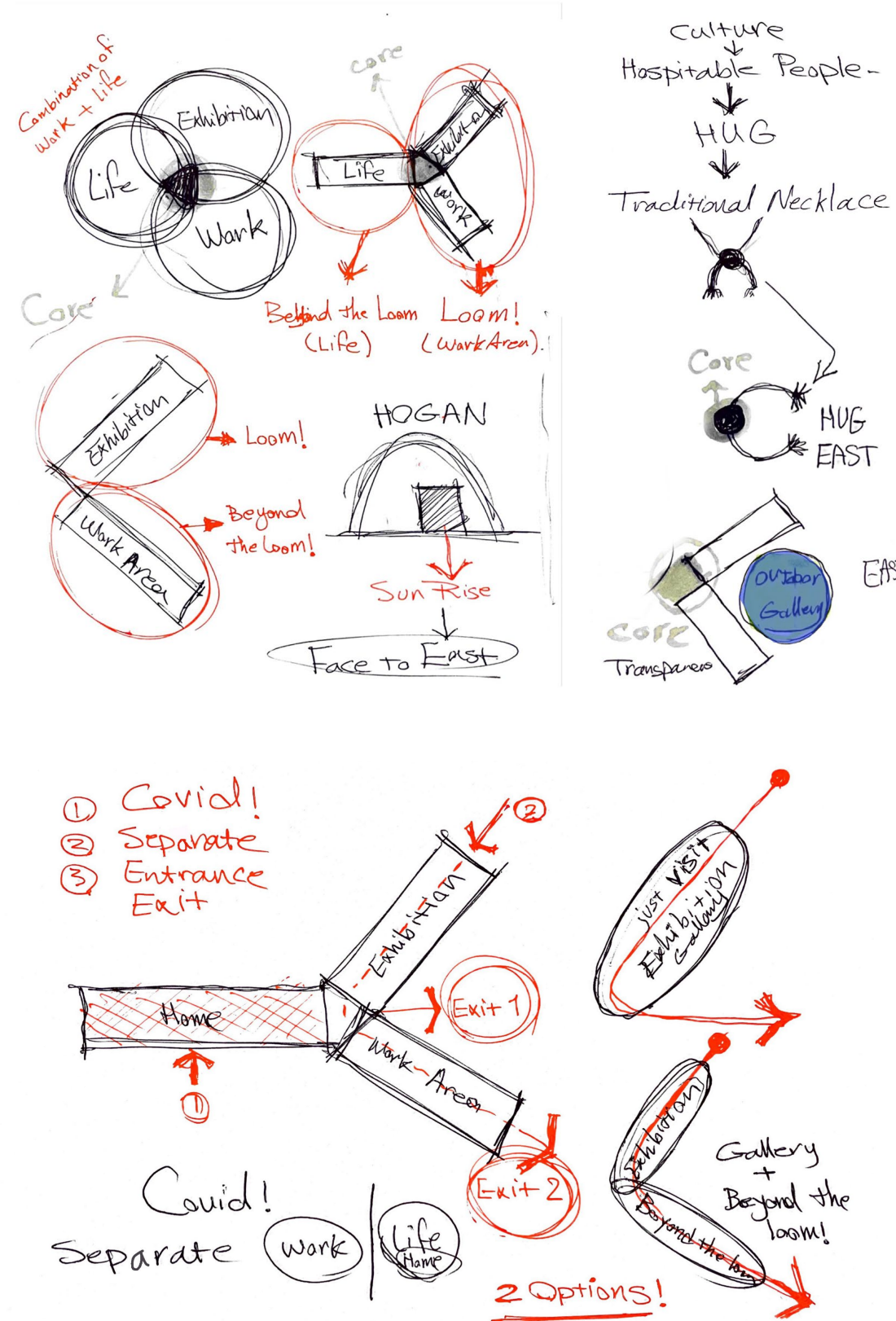
Integrating the life, work and social activities like the wefts and wraps of a rug offers more freedom and flexibility to artists. Thus, as the artist turns valueless things to a masterpiece, in **BEYOND THE LOOM**, we are turning 3 raw shipping containers to a great, occupiable space for life and work.

LOCATION

Santa Fe Trail, Santa Fe, NM, The Santa Fe National Historic Trail extends between western Missouri to Santa Fe, New Mexico. Museums, historic sites, landmarks, and original trail segments are located all along the length of the Trail. Santa Fe is the oldest state capital in the United States and is considered one of the world's great art cities. Before the European colonization of America, the Santa Fe area was occupied by the Navajo people. The conjunction of the trail and the city of Santa Fe is a suitable location for this project.



DESIGN PROCESS



DESIGN CONCEPTS



Hospitable Navajo

Navajos are very hospitable and believe in an open-door policy in which they welcome everyone. Jewelry has a spiritual meaning for them. One of the famous necklaces in this culture is **OPEN ARMS NECKLACE** which is a symbol of their hospitality. This object became an inspiration for the project design in the public zone.



East Direction in Hogan

East direction has an important role in Navajo culture. In Hogan design, which is their traditional home, the doorway opened to the east so they could get the morning sun as well as good blessings. In our project, the public zone and outdoor gallery face to the East.



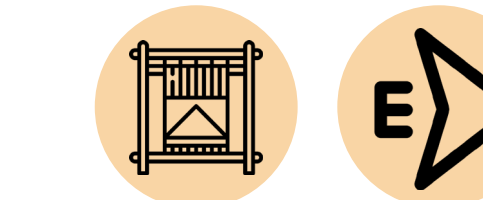
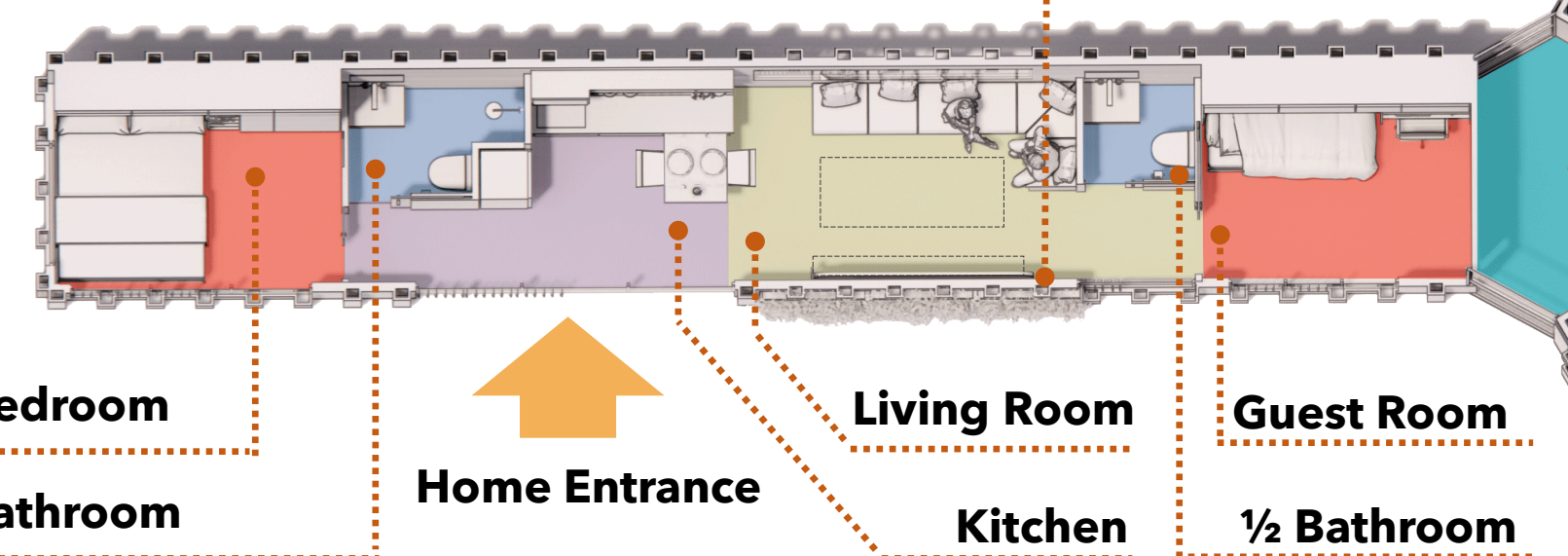
Priority is always life not work. That is why we create completely separate living space to provide privacy beyond the work.



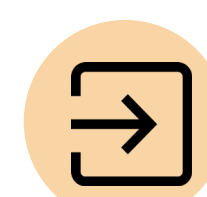
This is a focus point of the project. The diamond of the jewelry. There is the sharing point of work, life, and exhibition that acts like a pause point. It also acts like a functional object. Seasonal exhibitions could be held in this area.



Windows provide cross ventilation that increases the indoor air quality and reduces the transmission of disease such as COVID 19.



Navajo artists traditionally work on the loom outdoors. This space between two containers, that face to East, allow for **outdoor galleries** for public communication during post pandemic.



A separate entrance for the home provides a safe and private space behind the public area.



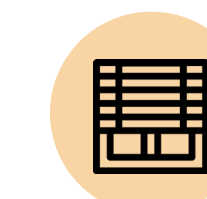
Foldable furniture for the kitchen, bedrooms, living and dining area is a proper solution for small spaces.

EXTERIOR CONSIDERATIONS

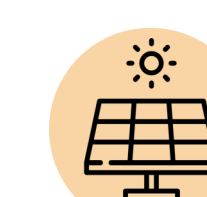
The main goal of the exterior design is contributing to a sustainable design through:



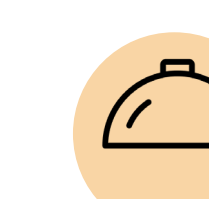
Moveable green panels with local vegetation and automatic water spray works like a heat barrier.



Adjustable shadings to control sunray penetration



Solar panels face to the South to reduce energy expenses.



Opaque dome skylights on the roof allowing more access to natural light while act as a barrier for direct sun radiation

Shaders made of the corrugated metal sheets of the facades of the containers



ANALYSIS OF RESEARCH

<p>Navajo Culture</p>	<ul style="list-style-type: none"> Dempsey, P., & Gesse, T. (1995). Beliefs, values, and practices of Navajo childbearing women. <i>Western Journal of Nursing Research</i>, 17, 591-604. Mercer, S. O. (1996). Navajo elderly people in a reservation nursing home: Admission predictors and culture care practices. <i>Journal of the National Association of Social Workers</i>, 41, 181-189. Sanchez, T. R., Plawecki, J. A., & Plawecki, H. M. (1996). The delivery of culturally sensitive health care to Native Americans. <i>Journal of Holistic Nursing</i>, 14, 295-307. Phillips, S., & Lobar, S. (1995). Navajo child health beliefs and rearing practices within a transcultural nursing framework: Literature review. In M. Leininger. <i>Transcultural Nursing Concepts, Theories, Research & Practices</i> (pp. 485-500). New York, NY: McGraw-Hill. 	<ol style="list-style-type: none"> The Navajo lived in Hogans. It was a domed shaped house with a wood frame and walls made of clay. The door of it always faced east so they could see the sun rise. The Navajo men made jewelry. The Navajo like to use turquoise in their jewelry as well. Designs on Navajo textiles are usually geometric in character with the triangle and diamond forming the most basic elements
<p>Container</p>	<ul style="list-style-type: none"> Smith, J. D. (2005). Shipping containers as building components. <i>University of Brighton, Brighton</i>. Zhang, G., Setunge, S., & van Elmpst, S. (2014). Using shipping containers to provide temporary housing in post-disaster recovery: Social case studies. <i>Procedia Economics and Finance</i>, 18, 618-625. Shi, M. (2021, May). Assessment of the impact of windows and building orientation on the energy intensity of container houses using BIM. In <i>IOP Conference Series: Earth and Environmental Science</i> (Vol. 769, No. 2, p. 022023). IOP Publishing. 	<ol style="list-style-type: none"> Energy consumption is minimal if the container is long from east to west and short from north to south. Isolation from noise can be provided by separating the shipping containers from each other or by means of internal isolation For container houses, when the height of the windows is high, the energy consumption of the container house is the smallest Insulation has a substantial effect on the floor to ceiling height.
<p>Sustainability</p>	<ul style="list-style-type: none"> Bowley, W., & Mukhopadhyaya, P. (2017). A sustainable design for an off-grid passive container house. <i>International review of applied sciences and engineering</i>, 8(2), 145-152. Islam, H., Zhang, G., Setunge, S., & Bhuiyan, M. A. (2016). Life cycle assessment of shipping container home: A sustainable construction. <i>Energy and Buildings</i>, 128, 673-685. Shen, J., Copertaro, B., Zhang, X., Koke, J., Kaufmann, P., & Krause, S. (2020). Exploring the potential of climate-adaptive container building design under future climates scenarios in three different climate zones. <i>Sustainability</i>, 12(1), 108. 	<ol style="list-style-type: none"> All walls of the containers should be insulated from inside and the main thermal bridges are window and door frames. The simplest way is adding more foam. Results show that by considering appropriate design strategies, container homes have overall contributions in sustainability. Climate adaptive design, sun shading and passive solar gain can reduce the energy costs and contribute to sustainable design.
<p>COVID 19</p>	<ul style="list-style-type: none"> Wardhani, D. K., & Susan, S. (2021, April). Strategy to Reduce the Covid-19 Transmission through Adaptation of Greenish Interior Space (IS) Criteria. In <i>IOP Conference Series: Earth and Environmental Science</i> (Vol. 738, No. 1, p. 012072). IOP Publishing. Nedari, A., Roesli, C., & Simanjuntak, P. M. (2021, April). Preparing post Covid-19 pandemic office design as the new concept of sustainability design. In <i>IOP Conference Series: Earth and Environmental Science</i> (Vol. 729, No. 1, p. 012095). IOP Publishing. Ozenen, G. (2020). Practical, rapid, and cost-efficient interior architectural precautions for prevention of COVID-19 in the workplace. <i>Work</i>, (Preprint), 1-12. 	<ol style="list-style-type: none"> Green design reduce the COVID_19 transmission by increasing the indoor air quality. One-way foot traffic or single direction in crowded areas is important. Antimicrobial materials with easy to clean surfaces are wipeable and appropriate. Open the windows and doors to let air circulate and increase the ventilation rates to reduce the COVID-19 particles in the air.
<p>Interview</p>	<p>Rachel Anderson is an Assistant Professor and ADM program director in Texas Tech university. Some of her professional experiences are fashion designing, apparel pattern making, apparel draping, fashion show production, juried art and fashion exhibitions, art and fashion collaborations. She Has experience.....</p>	<ol style="list-style-type: none"> Flexibility is a priority with moveable walls with wheels on the bottom for exhibition are required! A Space for community services encourages people to attend events. People like to see the creation process. Let them to see the backstage! Versatile spaces are appropriate to handle different galleries in different months.

BEYOND THE LOOM

RESIDENTIAL SPACE



↔ The living area for the couple is convertible to a dining room for guests. A spacious area will allow for the daily routine life of the couple.

🍽️ Dining with guests is not an everyday activity. A suspended automatic dining table that can be lowered from the ceiling, a foldable sturdy bench, and an L shape sitting area and two chairs provide dining space for 12 people.

📦 Custom furniture for this area to address storage needs.

➡️ Exit to pause and work area

🌀 Navajo motifs and colors

📏 Adjustable shading

🪞 Mirror to make room look bigger

🚪 Sliding doors to save room

🪑 The cabinet has a hidden table for the couple in daily living.



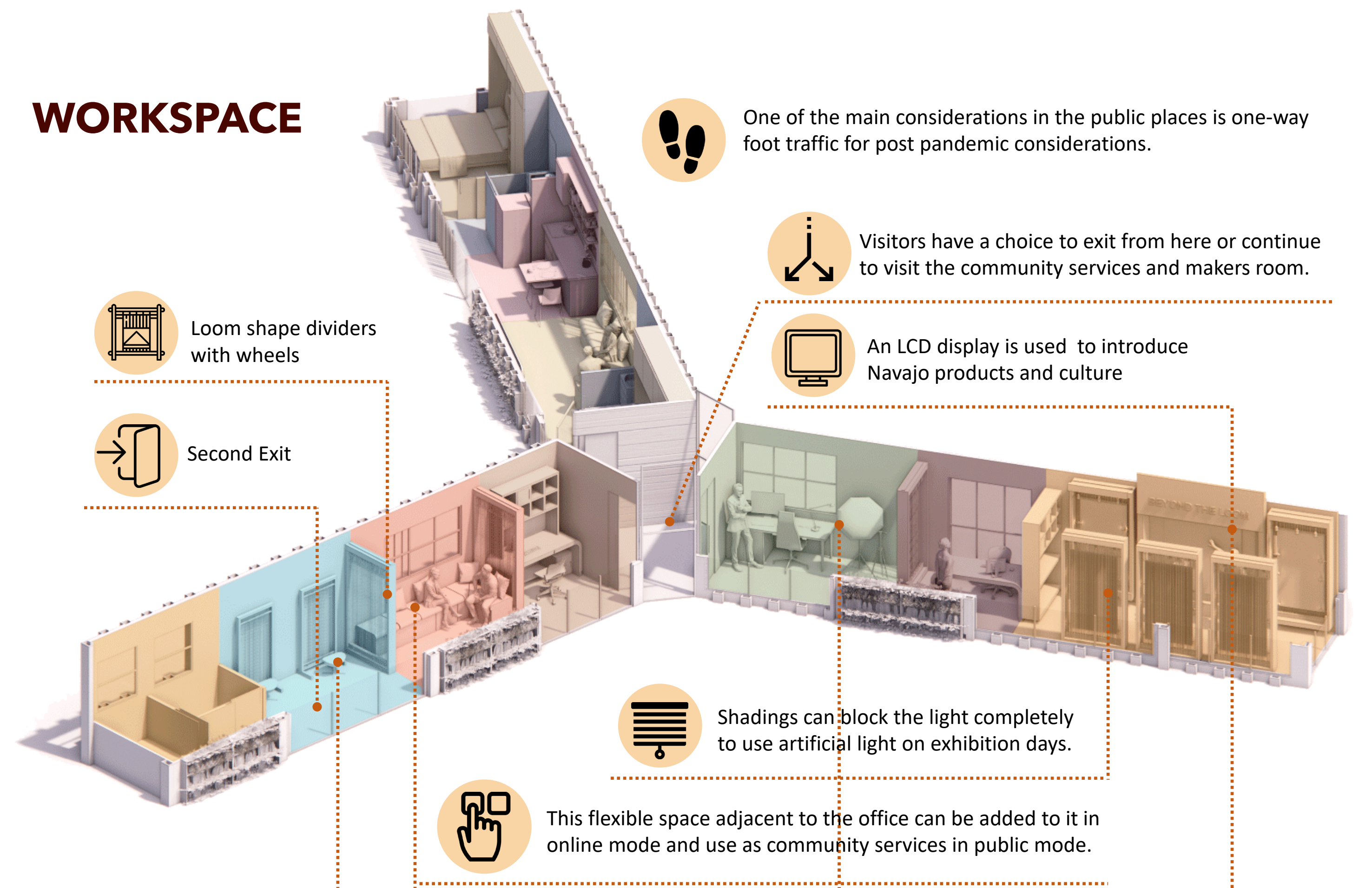
FURNITURE

Custom furniture, folding bed and easily wipeable furniture are used for the project.

MATERIALS

Easily cleanable materials and wipeable furniture are suitable choices during post pandemic. Materials with appropriate configurations are applied for the project such as Stainless-steel gold and copper color sheet brushed finish decorative metal panel, high-pressure laminate (HPL), melamine, ceramic and medium-density fiberboard (MDF).

WORKSPACE



👣 One of the main considerations in the public places is one-way foot traffic for post pandemic considerations.

🚪 Visitors have a choice to exit from here or continue to visit the community services and makers room.

📺 An LCD display is used to introduce Navajo products and culture

🚪 Loom shape dividers with wheels

➡️ Second Exit

📏 Shadings can block the light completely to use artificial light on exhibition days.

👉 This flexible space adjacent to the office can be added to it in online mode and use as community services in public mode.

