

Aspen House Palliative Care

Design Concept

Aspen House integrates sustainable design practices and modern technology to enhance and improve patient-centered palliative care. This design supports a warm, safe and nurturing environment. It employs strong and soft lines, visual texture, organic shapes and a warm, soothing palette of blues, green and browns. Recognizing the importance of family in the healing and support process, the patient room is laid out to promote patient safety and patient interaction while preserving privacy. Multi-functional furniture allows patients and family members to remain plugged-in to work or a space to rest. A building automation system (BAS) controls energy consumption within the building through zoning, while individual controls are given to each patient room, allowing patients and their families to adjust temperature and lighting to meet personal comfort levels. Controls are accessed via an e-tablet serving dual-purpose for entertainment. Special consideration is given to ensure products and materials meet sustainable design practices.

Goals

1. EMPLOY SUSTAINABLE DESIGN SOLUTIONS
2. TECHNOLOGY ENHANCES THE PATIENT/FAMILY HEALTH EXPERIENCE
3. MULTI-FUNCTIONAL FAMILY ZONE PROMOTES PATIENT SUPPORT AND HEALING

Research Summary

Palliative care is an approach which improves quality of life of patients and their families facing life-threatening illness, through the prevention and relief of suffering by means of early identification and impeccable assessment and treatment of pain and other problems, physical, psychosocial and spiritual. (WHO, 2002) In more simple terms, it is the prevention and treatment of suffering. As of 2005, twenty percent of American hospitals (1,100) have developed palliative care units and/or consultation teams. (Foley, 2005)

3 Categories of Palliative Treatment:

Physical Needs

- Safe, clean and comfortable place for dying
- Control of pain and symptoms
- Appropriate food and nutrition
- Personal care

Emotional Needs

- Respect for dignity
- Respect for the dying person's wishes to the extent possible
- Information about emotional change to expect
- Counseling
- Attending to spiritual needs

Social Well-being

- Companionship
- Maintenance of social functioning
- Help in resolving relationships

There has been a growing movement and awareness among doctors and patients about palliative care. There has also been an increase in hospital design aimed at patient-centered care. If the goal of palliative care is to provide for both patient and family members then it is logical to also plan for family needs and patient-family interactions.

Marie Abraham et al, (Abraham,2012) states that "patient and family-centered care is not a new concept. It is an innovative approach to the planning, delivery, and evaluation of health care grounded in mutually beneficial partnerships among health care providers, patients and families." This article was specific to pediatric care, but many of the concepts presented easily translate to palliative care. Physical, attitudinal, and organizational changes all must be accounted for in order to provide positive patient- and family-centered care.

World Health Organization. (2002). Palliative care. Retrieved August 29, 2003, from http://www.who.int/hiv/topics/palliative/Palliative_Care/en/
 Kathleen M. Foley. "The Past and Future of Palliative Care," *Improving End of Life Care: Why Has It Been So Difficult?* Hastings Center Report Special Report 35, no. 6 (2005): S42-S46
 Abraham, M. & Moretz, J.G. (2012). Implementing patient and family-centered care: Part 1. Understanding the challenges. *Pediatric Nursing*, 38, 44-47.

Sustainable Product Selection Key

Tag	Description	Manufacturer	Sustainability
f1	Nala Patient Chair	Nemschoff	Greenguard GOLD
f2	Palisade Flop Sofa (adjustable table, lamp and data connections)	Nemschoff	Greenguard GOLD
f3	Palisade Day Stand (with data connections)	Nemschoff	Greenguard GOLD
f4	Palisade Stool	Nemschoff	Greenguard GOLD
f5	Palisade Coat & Tote Rack	Nemschoff	Greenguard GOLD
f6	Palisade Stool	Nemschoff	Greenguard GOLD
ls1	Custom Shelving & Wardrobe - Cherry Laminate		30% Pre-Consumer
lv1	Nature's Paths Lock Solid Heritage Cherry	Mannington	Quantum Guard HP LEED Credits
lv2	Nature's Paths Lock Solid Windsor Oak Moleskin	Mannington	Quantum Guard HP LEED Credits
t1	Round Leaves Pine	Designtex	100% Nylon 100% Pre-Consumer
t2	Wood Work Ash	Designtex	100% Nylon 100% Pre-Consumer
t3	Friendly Faux Parrot	Designtex	100% Nylon 100% Pre-Consumer
t4	Nile Vine Texture Wall Covering	Tri-Kes	Low VOC Vinyl

FURNISHINGS (f)



LAMINATE SURFACES (ls)



LVT (lv)



TEXTILES (t)



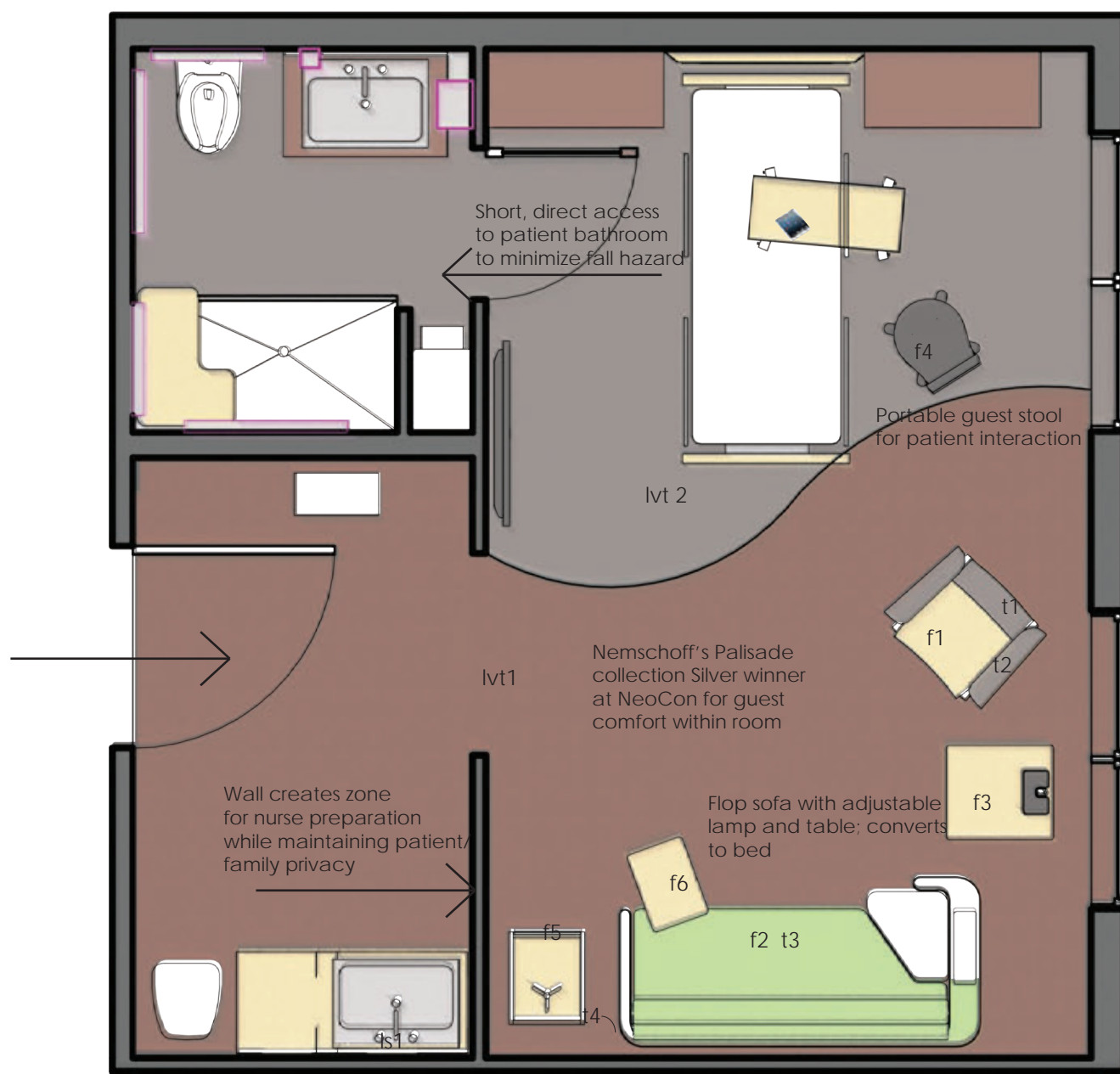
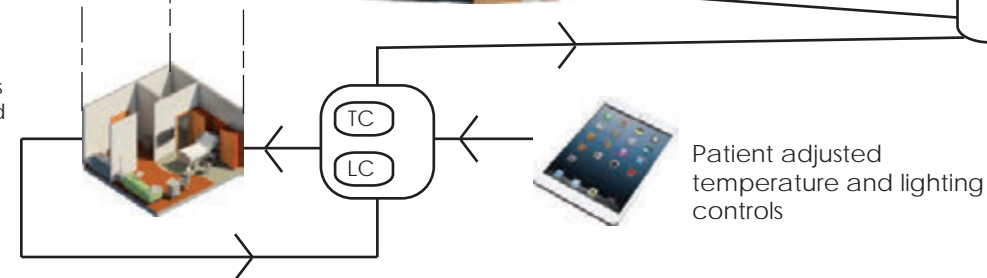
Sustainable Energy / Patient-centered Plan

Patient rooms located on east side of building to avoid late afternoon heat and reduce cooling loads

Windows added to patient rooms to provide natural daylighting; automatic shades control amount of light desired by patient via iPad control



BAS



PATIENT ROOM FLOOR PLAN

SCALE: NOT TO SCALE
360 SQ. FT. (18' X 20')

