



ALLEGIANCE COMMUNITY LIVING CENTER FOR VETERANS

CONCEPT

The design of the Allegiance Community Living Center will create meaningful spaces for residents to commit to their mental and physical health, focus on their healing, evolve, and connect with others. The center will provide spaces that encourage social interaction to create a networking system where they feel apart of a community where they can develop relationships and have a sense of shared history

SITE ANALYSIS

Corpus Christi, Texas was selected because of its noticeably low veteran facilities in comparison to major cities across Texas. It was ranked lowest in access to veteran facilities and affordability. Bringing in more veteran facilities such as community living spaces will improve quality of life for current veterans, more options for housing, and a competitive pricing which will lower costs and make these facilities more accessible to the general public.

BRANDING CONCEPT

Allegiance was formed as a remembrance of the pride, respect, and honor veterans hold and give our communities. A bald eagle, also known as our national bird, spreads its wings incorporated with our American flag to come together and form a "V" to align itself with the back bone of our country- these veterans.

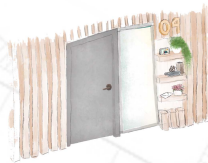
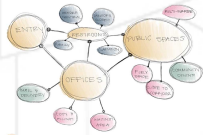
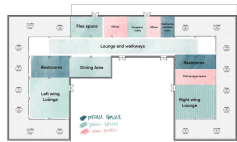
RENDERED FLOOR PLAN

Key: (1) Army Community Area, (2) Gender Neutral Bathrooms, (3) Lounge, (4) Marine Corps Flex Space, (5) Navy Dining Area, (6) Coffee Bar, (7) Family Bathroom, (8) Airforce Office Spaces, (9) Entry/Reception, (10) Office Space, (11) Copy & Filing, (12) Lounge, (13) Gender Neutral Bathrooms, (14) Lactation Room, (15) Janitors Closet, (16) Coast Guard Lounge, (17) Enclosed Outdoor Area, (18) Main Pathway, (19) Private Pods, (20) Barbecue Pods, (21) Outdoor Social Space



PROCESS

Creating a central, easy to navigate, and warm space was important while thinking out this design. Visuals as you enter through reception were made possible while maximizing the view of the courtyard. Right off the reception, the staff offices are within reach for easy access to guests as well as veterans currently living in the facility. Clear visuals help way finding and comprehension the location of the flex spaces, dining area, and restrooms, which are all central to each wing.



DINING AREA



PRIVATE PODS

RESEARCH

COVID ADAPTATION

Among the current pandemic, the design field is facing new challenges to address solutions to combat spreadable illnesses in the foreseen future to this scale. Practicing social distancing, and incorporating antimicrobial materials is becoming base line practices at this point in 2020. According to Christelle Harrouk, biophilia will become not only a way to buffer spaces and create discreet social distancing through design, but will also be a natural way to increase air quality and support psychological health. Other targets of designing for COVID-19 would be limiting skin-to-skin contact, and implementing antimicrobial materials and furnishings.

SOCIAL SUSTAINABILITY

The goal of the design was to be socially sustainable; meaning it would be diverse, connected, equitable, and provide a good quality of life (Woodcraft, 2012). Evidence has shown that "areas should be considered that allow for types of support that make people feel at home and that create opportunities to meet other residents: like community and cultural activities that create a sense of shared history" (Woodcraft, 2012). Therefore, the building includes indoor and outdoor spaces that promote physical activity, social interaction, and individual mental and physical health. Another goal of the design was to create a space that was warm and inviting where residents could seek group and private therapy if needed; both indoors and outdoors. Lastly, the intention of this space was to be accessible to all users; therefore, second stories were not included and all other areas are ADA accessible.

VETERAN RESEARCH

The intent of the design was to create a facility that supports the numerous services and programs that Veterans participate in. The design also avoids a one-size-fits all approach, meaning that different military identities, disabilities, ages, and backgrounds were considered throughout the design process.

BUILDING CODES

The occupancy type is I-1 Institutional. No separation is required. The building is sprinkled. The common areas are roughly 10,000 sf with an occupancy load of 42. The sleeping areas are roughly 8,480 sf with an occupancy load of 71. There is a minimum of two exits. The exit travel distance is 250 ft. The building requires two drinking fountains and one service sink. The path of travel is about 75 feet max. The hallway widths require a minimum of 44" and there doors require a minimum of 32". (IBC, 2018)

DESIGN CONSIDERATIONS

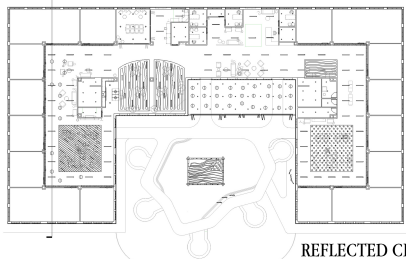
DINING AREA

This space was designated to represent the Naval Branch. A neutral color scheme was used as the foundation and was accented with navy and gold. The space is entirely ADA compliant and provides biophilic elements to create a calming atmosphere. Copper finishes were also used to mitigate bacterial and viral transmissions.

PRIVATE PODS

This space was created to promote physical activity, social interaction, as well as private time for individuals to focus on themselves. Each segment branching off of the main pathway was built to represent each branch of the military. Therefore, color accents are used in each space to represent a different branch. In this space, the yellow and white to represent to air force. Each segment also provides plant life for biophilic purposes. There are alternating plant heights for a change in mood and environment. The open lawn also provides opportunities for social gatherings, individual relaxation, and opportunities for possible therapy sessions.

RESEARCH



REFLECTED CEILING PLAN

MATERIALS

The materials selected all reflect each military branch, and have an associated area in the design dedicated to each branch. These colors- gold, teal, navy, blue, and red are vividly sewn through the design of each space to be inviting and social areas amongst this veteran community. Warm wood tones compliment this pallet and give the impression of real wood while maintaining adequate durability suitable for healthcare. All these materials including fabrics and flooring are Knoll products and are anti-microbial, bleach cleanable, and stain resistant. Living up to new pandemic procedures, they are healthcare grade materials. Copper materials are implemented for their antimicrobial properties and are used throughout the spaces.

FLOOR PLAN NOTES

Wide corridors were used to create very open spaces. Research supported that Veterans do not like turning sharp corners or having blind spots. The outdoor spaces also support this with the uses of curves pathways and clear sight lines. The exterior patio has movable doors to counter weather conditions to keep everyone comfortable while still allowing for exposure to the outdoor spaces. The outdoor pod areas allow people to rest and cook or barbecue by themselves or with others within reach of outdoor eating spaces to sit and enjoy the food and weather. The gates inside the courtyard controls who enters and exits the facility and also provides a secondary entrance option for Veterans in studios on the far part of the facility. The entrances to the bathrooms are designed to limit skin-to-skin contact and are also a more accessible way to enter. The flex space has movable doors to allow for different types of environments and privacy to accommodate the activity or event attending. As seen in the reflected ceiling plan above, suspended screens were used to define social areas and relate back to the concept of "Allegiance". These screens create a more warm and inviting space with the lowered ceiling and inviting materials.

DESIGN CONSIDERATIONS

OUTDOOR SOCIAL AREA

This space was designed to create social and private space. The heart of the space has many furniture arrangements to promote social connectivity and engagement. The curvy pathway supports physical exercise and creates clear way-finding to each space of the outdoor courtyard. Separate pathways are also used to guide users to and from the exits. Each segment that extends off the main pathway includes pods or baroque areas for private meetings, gatherings, or relaxation. The open lawn areas are available for games, such as corn hole, for social support from family and friends. ADA raised gardens are also provided for the residents to partake in gardening therapy. The entire area is illuminated for safety purposes and clear sight lines. This also promotes physical activity for all times of the day and year. Plants are provided throughout the space to create a connection with nature and to create plenty of shade during the hotter seasons. Seating is also provided along the pathway for any residents or users that need to rest or would like to socialize.

ARMY LOUNGE AREA

All spaces are ADA accessible. Anti-microbial, bleach-able and stain resistant furnishings and materials were used throughout to prevent the spread of germs. All spaces are designed to be flexible and accommodate for social distancing guidelines. Clear sight lines are maintained throughout the space for safety and mental well-being of Veterans. Break-away spaces are used for residents to spend time alone, read, or isolate if necessary or wanted. Natural light is taken advantage of for creating positive distractions and a calming atmosphere. The social spaces encourage involvement and socializing with other Veterans in the community. The lounge area was designed to allow residents to personalize their suite as well as to promote interacting between other residents and visitors. The items placed on these shelves could be used as conversation starters, memories, or making items such as books available to other residents. The lounge area contains a fireplace and built in shelving for social interaction and individual time. The shelving could serve as a community library for all residents to share and trade.

SECTION



REFERENCES

Belanger, Y. (2020, April 15). Healthcare after COVID-19: Smart design solutions for clinical spaces. Retrieved from <https://www.uscomet.org/healthcare-after-covid-19-smart-design-solutions-for-clinical-spaces>

Brownell, H. (2020, March 26). Materials and Coatings That Reduce Surface Transmission of Bacteria and Viruses. Retrieved from <https://www.architecturalrecord.com/resources/materials-and-coatings-that-reduce-surface-transmission-of-bacteria-and-viruses>

Cole, R. (2020, April 16). The Way COVID-19 is Changing the Future of Interior Design. Retrieved from <https://www.lodex.com/resources/covid-19-is-changing-the-future-of-interior-design/#:~:text=the%20best%20interior%20design%20materials,https://www.uscomet.org/healthcare-after-covid-19-smart-design-solutions-for-clinical-spaces>

Paul, B. (2019, April 25). The Best Anti-Microbial Coatings for Healthcare. Retrieved from <https://www.uscomet.org/healthcare-after-covid-19-smart-design-solutions-for-clinical-spaces>

Hammerson, M. (2017, July 28). The Best and Worst States for Retired U.S. Veterans. Retrieved from <https://www.veterans.org/blog/2017/07/28/best-and-worst-states-for-retired-u-s-veterans/>

Hendry, E. (2020, March 15). Designing Office Buildings to Respond to the Coronavirus. Retrieved from <https://www.uscomet.org/healthcare-after-covid-19-smart-design-solutions-for-clinical-spaces>

International Building Code (2017). United States. International Code Council. Incorporated.

Randall, S., Leitch, M., Zimmerman, E., Taylor-Spive, R., Hansen, A., & McCann, C. (2017, May). Exploring the Economic & Employment Challenges Facing U.S. Veterans: Sun Kistala, Mary Keeling Elizabeth Zimmerman, Kaiti Taylor & Elyse Clark. March Anthony N. Hansen Carl A. Cunniff & Qualitative Study of Veterans of America Service Providers & Veteran Clients. Retrieved from <https://www.uscomet.org/healthcare-after-covid-19-smart-design-solutions-for-clinical-spaces>

Rothman, E. (2019, April 18). Best and Worst States for Veterans. Retrieved from <https://www.uscomet.org/healthcare-after-covid-19-smart-design-solutions-for-clinical-spaces>

Tal, A., & Yaguello, A. (2015). Collaborative design: Outdoor environments for veterans with PTSD. Retrieved from <https://www.healthdesign.org/health-design-poster/collaborative-design-outdoor-environments-for-veterans-with-ptsd>

Sullivan, K. E. (2014). What is Social Sustainability? Retrieved from <https://www.uscomet.org/healthcare-after-covid-19-smart-design-solutions-for-clinical-spaces>

Swain, E. (2020, March 26). How Long does Coronavirus Survive on Surfaces? Retrieved from <https://www.uscomet.org/healthcare-after-covid-19-smart-design-solutions-for-clinical-spaces>

Vigoretti, S., Jones, S., Vingling, T., Wittenbraten, D., Wilson, J., & Wagnell, A. (2018). Creating Home: A Healing Center for Veterans and Their Families. Retrieved from <https://www.uscomet.org/healthcare-after-covid-19-smart-design-solutions-for-clinical-spaces>

Woolford, S., Barron, N., Gansler, L., & Hadden, T. (2012). Design for Social Sustainability: A Framework for creating thriving new communities. Retrieved from <https://www.uscomet.org/healthcare-after-covid-19-smart-design-solutions-for-clinical-spaces>



OUTDOOR SOCIAL SPACE



ARMY LOUNGE

