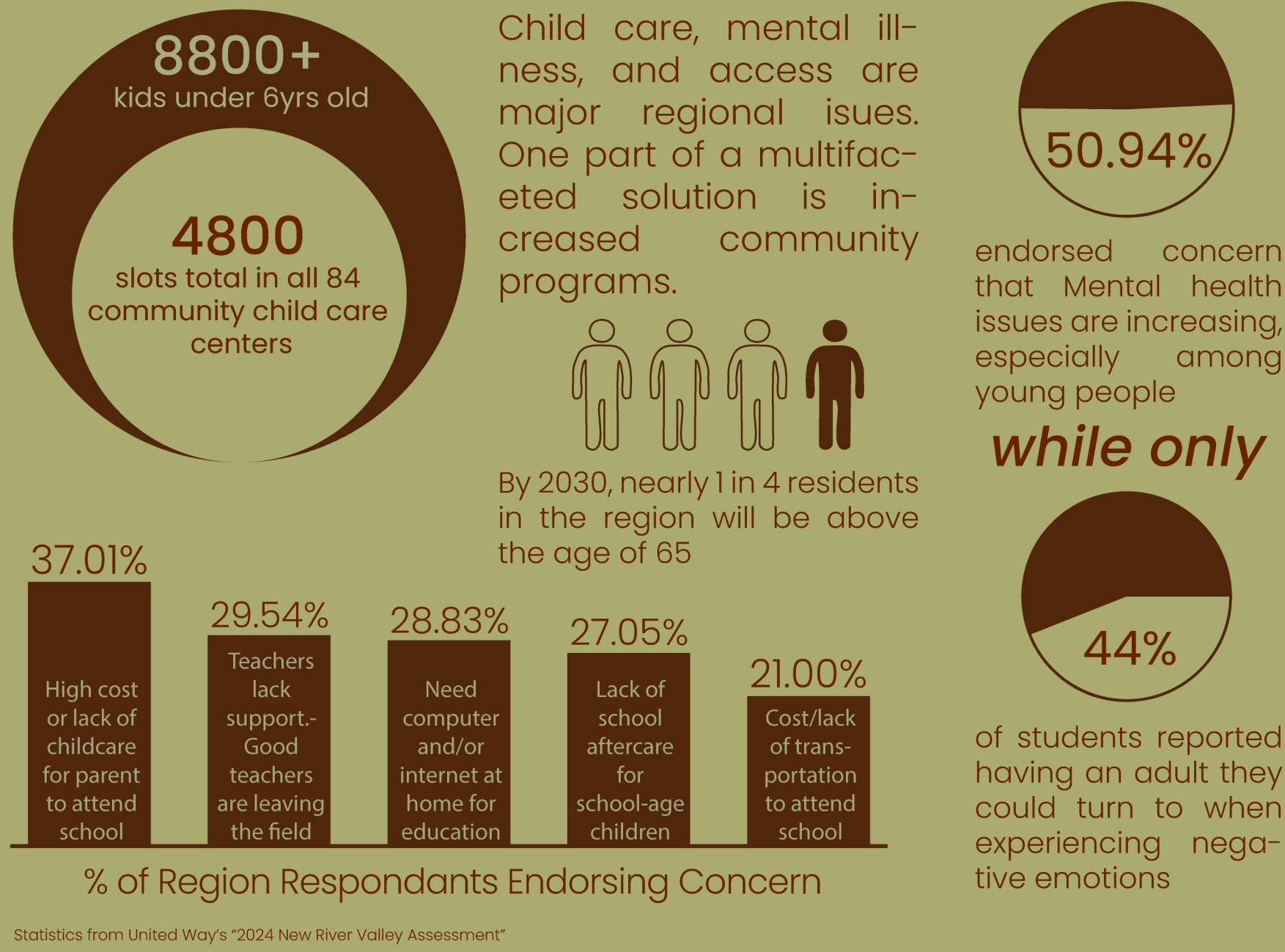


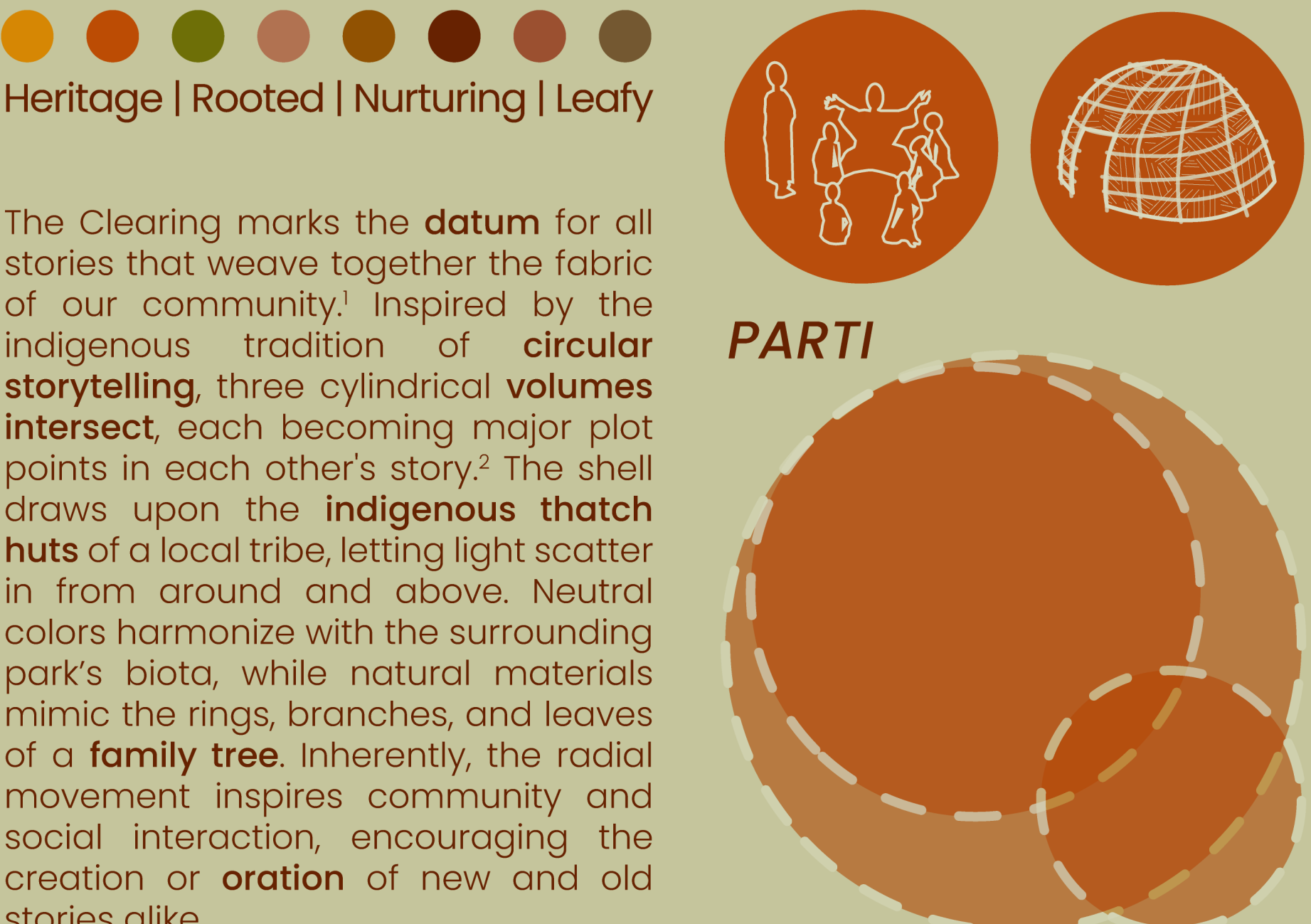
CONCEPT COLLAGE



RESEARCH



CONCEPT



LARGE MEETING



COMMUNITY

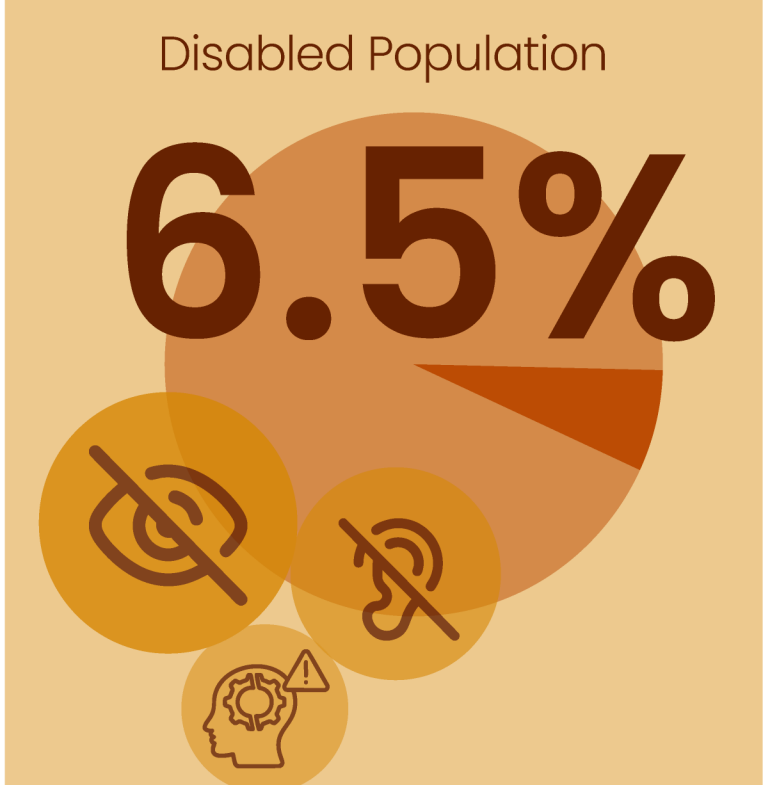
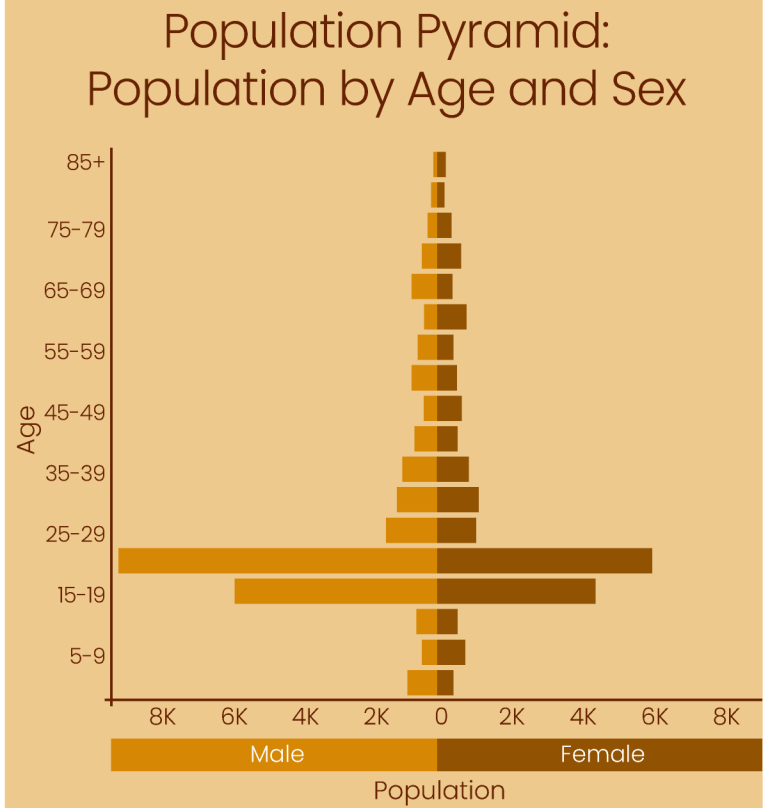
The *flexible, circular design* of the large meeting space encourages collaboration and a sense of community that boosts **intergenerational interactions**. Said interactions in turn produce higher engagement and a more well-rounded educational experience.

A *rounded enclosure* creates **equity** among users, because, without corners, all have equal positioning, translating to equal opportunity to contribute to activities and discussions. *Windows wrap* the space yet **preserve** the sense of **nature's expanse, intrigue, and possibility**.

The harvest of this nutrient-rich space will be the stories created and passed on to one another.

THE CLEARING

COMMUNITY



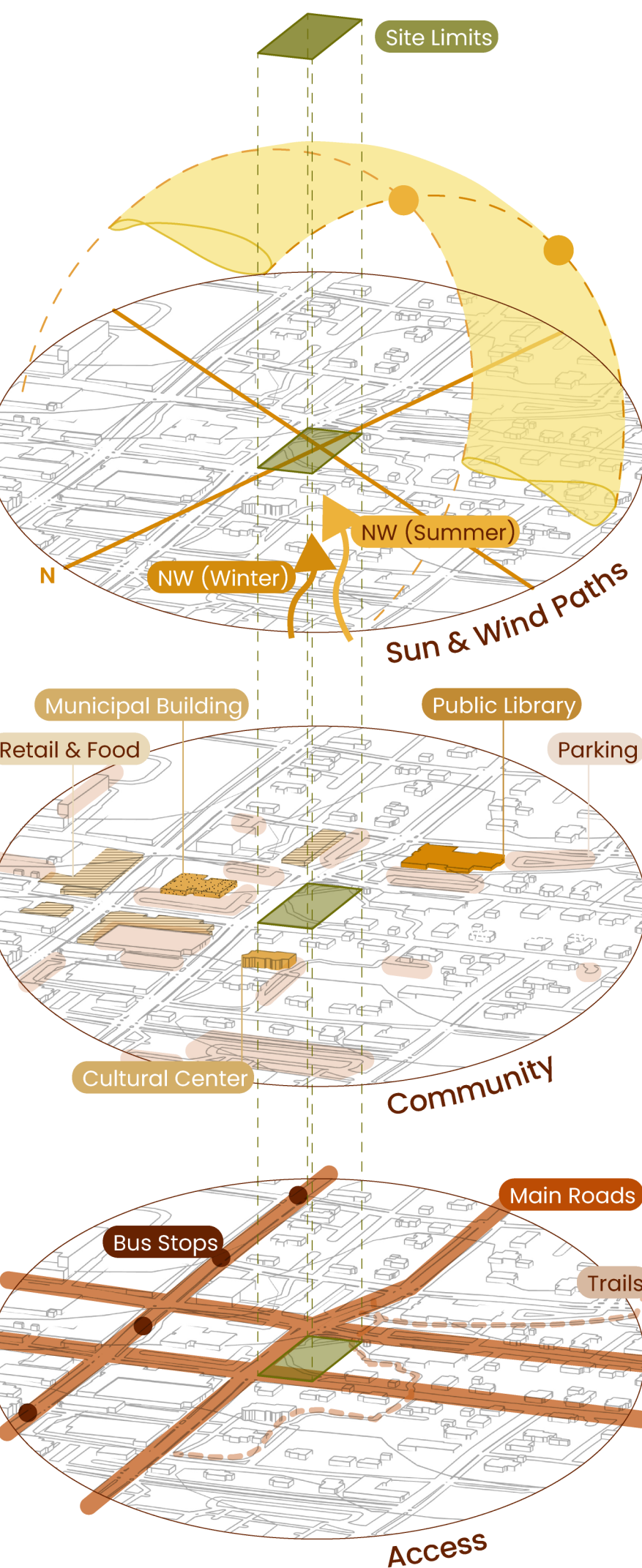
Race	Pop.
White	31792
Black/African American	2014
American Indian & Alaska Native	67
Asian	7307
Native Hawaiian & other Pacific Islander	26
Other Race	723
2 or more races	2897

Statistics from U.S. Census Bureau

SITE

Located within a small park in a quaint downtown neighborhood.

- 7 public schools
- Private schools
- 1 University
- 6 elder care center



CITATIONS

"Felt Right Wood Finish on Material Bank." Material Bank. Accessed December 9, 2024. <https://www.materialbank.com/felt-right-wood-finish-2573154?itemListId=boards&itemListName=Boards>.

"Gala Pure Eco S00724." Andreu World. Accessed 13 February 2025. <https://andreuworld.com/en/products/seating/stackable/gala-pure-eco>.

"Mingle." ERG International. Accessed 13 February 2025. <https://www.erginternational.com/mingle.php?incomingCategory=mingleChildren&id=793944>.

"New River Valley Office." United Way of Southwest Virginia. Accessed December 9, 2024. <https://www.unitedwayswva.org/new-riv-valley>.

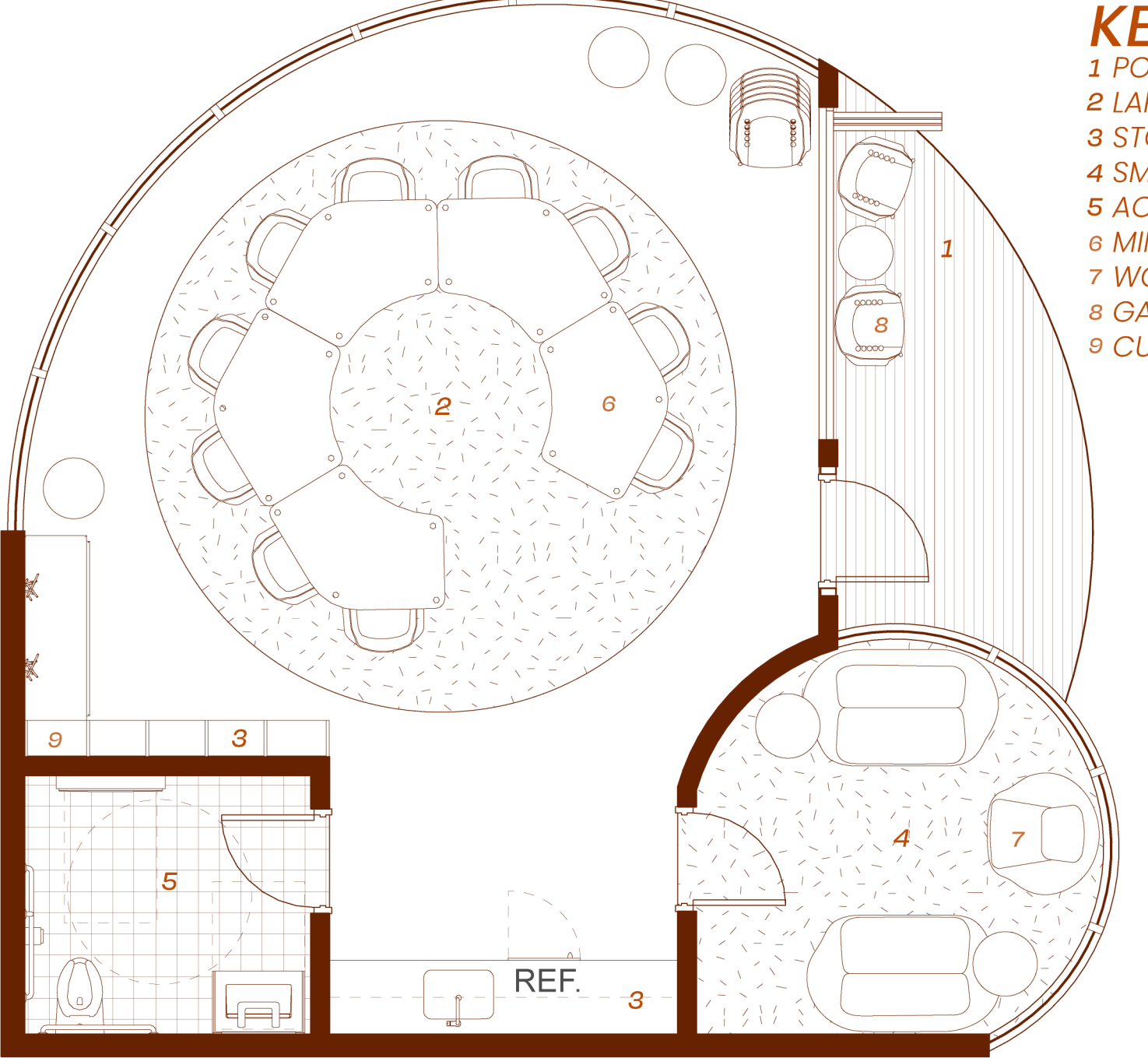
"NVR community assessment data.pdf." Accessed December 9, 2024. <https://grcodes.pro/WzzrWV>.

"ODEON Ceiling Suspended." Eureka. Accessed 13 February 2025. <https://www.eurekilighting.com/products/odeon-ii/>.

"Scorinhe, Era." Womb Chair. Knoll. Accessed 13 February 2025. <https://www.knoll.com/design-plan/product/womb-chair/section-design>.

"Tarkett Aftermath II on Material Bank." Material Bank. Accessed December 9, 2024. <https://www.materialbank.com/tarkett-aftermath-ii-1007009?itemListId=boards&itemListName=Boards&activeChild=625007>.

"Terrazzo and Marble Supply MB24-028 on Material Bank." Material Bank. Accessed December 9, 2024. <https://www.materialbank.com/terrazzo-and-marble-supply-mb24-028-2311950?itemListId=boards&itemListName=Boards&activeChild=1039973>.



FLOOR PLAN

Scale: 1/4" = 1'-0"

NARRATIVE

Childcare presents an urgent, local need while COVID-19's **aftereffects** intensify concerns for youth mental health.³ Simultaneously, the population of elders continues to **outgrow their access to care** and community.⁴ Overcoming **barriers like stereotypes and mobility** to create an intergenerational space can alleviate local concerns, in addition to **improving youth social skills, elder cognitive stimulation, and a sense of community**.⁵

In a college town, **occupying** a small area within a park, nestled between two local trailheads, is **a space for community storytelling**. The Clearing, a satellite to the public library, operates primarily as after-school childcare. Working with local schools and care facilities to bring generations together, volunteers and staff guide daily activities and oversee transport. Activities may include storytime, writing workshops, and art classes, all accommodated by a **flexible design**.

Drawing on the feeling of a forest clearing, **strong sightlines** to the outside maintain **safety** while offering further **degrees of interaction**, and enhancing the **biophilic benefits** of the interior. **Accessibility** is strengthened through physically and acoustically defined space; **health** is supported through access to walking trails and a calming, often naturally lit, interior. **Library devices are supplied for program use**. Lastly, the folding exterior door opens to merge space, bringing **natural ventilation** and increased **circulation**.

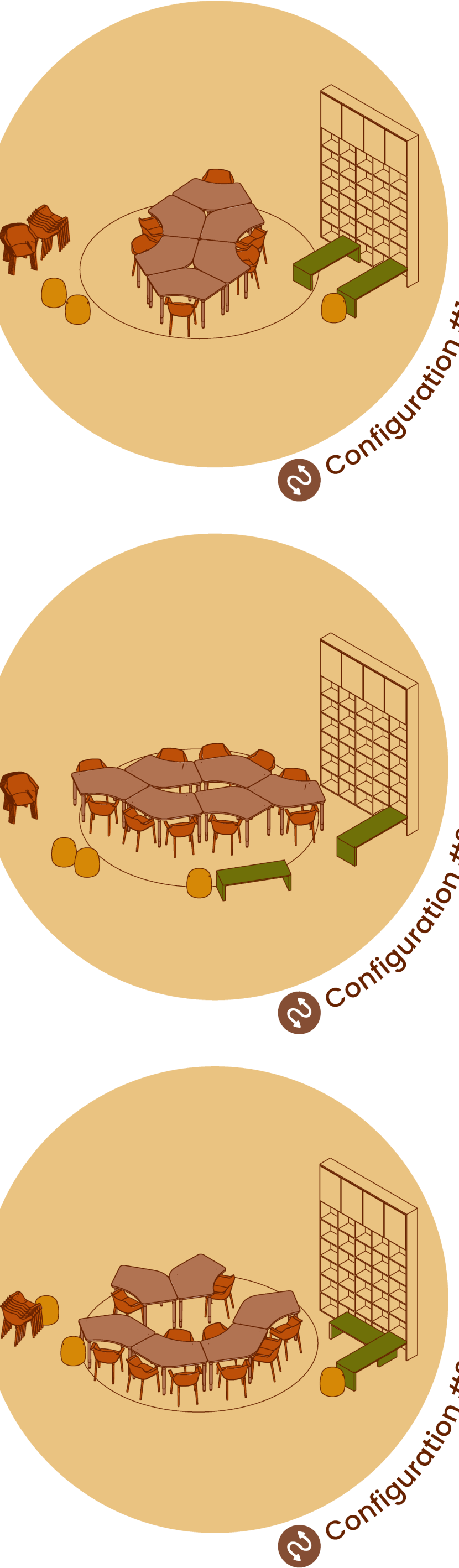
¹Learning from Indigenous Peoples - Sharing Circles, Dr. Justice O'Neil, 18 April 2019.

²Gaines, Rubin, Duker, Benton, Krasky, Chen, Jordan-Marsh, and Gotsis, "Healing Spaces: Feasibility of a Multisensory Experience for Older Adults with Advanced Dementia and their Caregivers," Cornell University, 2020.

³Kamplarskas, Shrivast, Teskeris, Harissas, Kamposioras, "Interior Design: A New Perspective in Supportive Care of Patients with Acute Onset of Debilitating Diseases," Palliative Medicine Reports, 2021.

⁴Norouz, Jafaroti and Chaudhury, "Designing Intergenerational Space through a Human-Development Lens," Journal of Architectural and Planning Research, 2019.

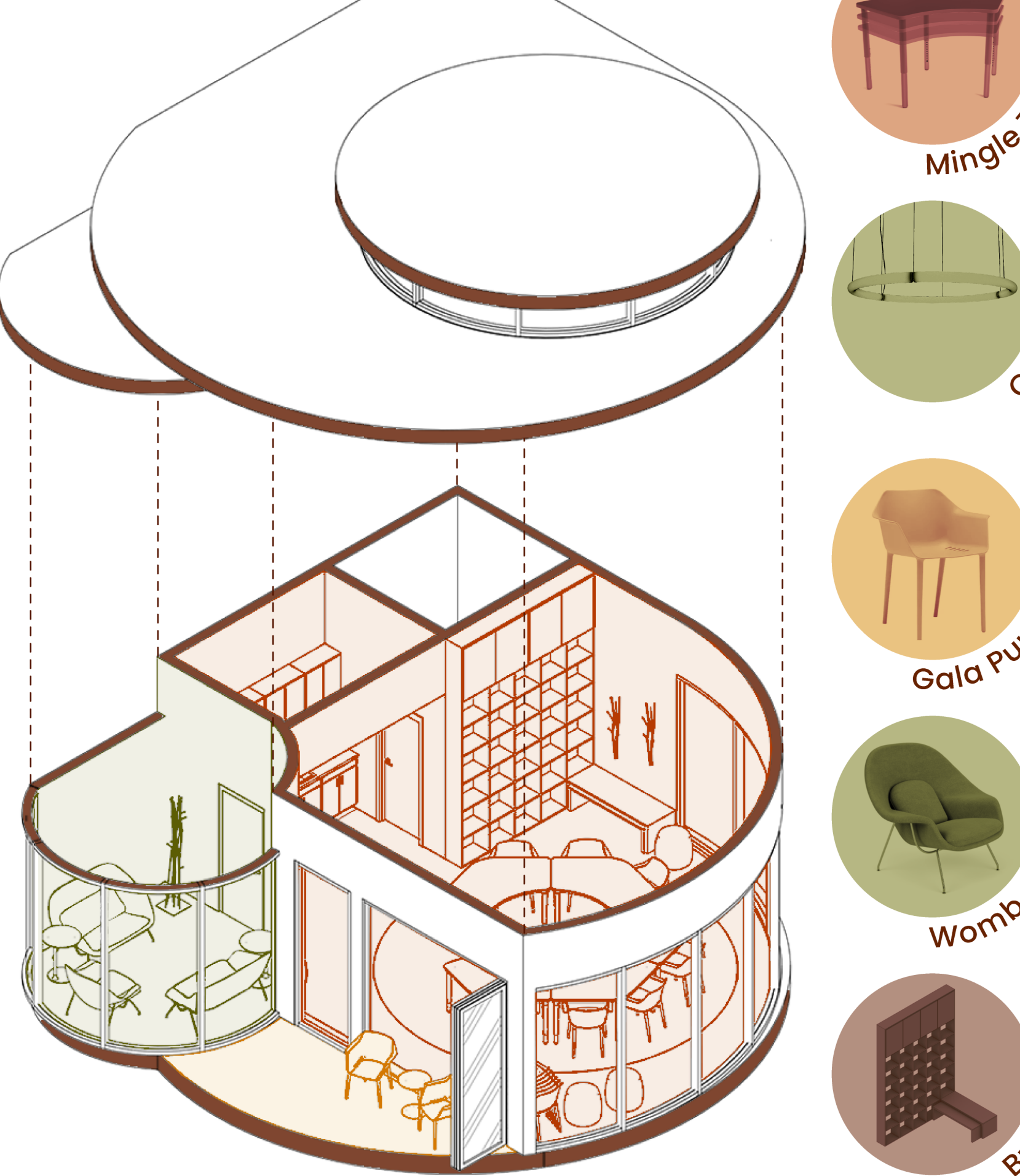
FURNITURE FLEXIBILITY



SMALL MEETING



AXONOMETRIC



- A glass door both maintains sightlines with the large meeting space while allowing for a degree of **privacy** and intimacy in the small meeting space
- Natural hues, wood acoustic treatment, *branch-like* furniture, *sunlight*, and large windows viewing the park maximize the soothing and healing benefits of **biophilic design**.
- This inclusive space reduces auditory distractions with *acoustic treatments*, utilizes *natural light* and dimmable artificial light, and provides *minimal visual clutter* for an all together **sensory-friendly environment**.

FURNITURE

- ERG International
 - Modular
 - Height-adjustable
 - Rounded table edges
 - Casters = easy to move
 - Laminate top = easy to clean
- Eureka Lighting
 - LED, Entire-surface illumination
 - Durable
 - 0-10V dimming (can add dimmed overhead light to daylight)
 - Ring shape mimics tree rings
- Andreu World
 - 6 Units stackable
 - Lightweight & easy to clean
 - 100% recycled and recyclable thermoplastomers
 - Ergonomic & optional cushion
- Knoll
 - Supports an array of sitting postures
 - Sense of enclosure befitting the higher privacy of the small meeting space
- Cubbies & Benches
 - Cubbies for participants
 - Nested benches = save space
 - Some cubbies outfitted with charging stations for communal devices lent from the library