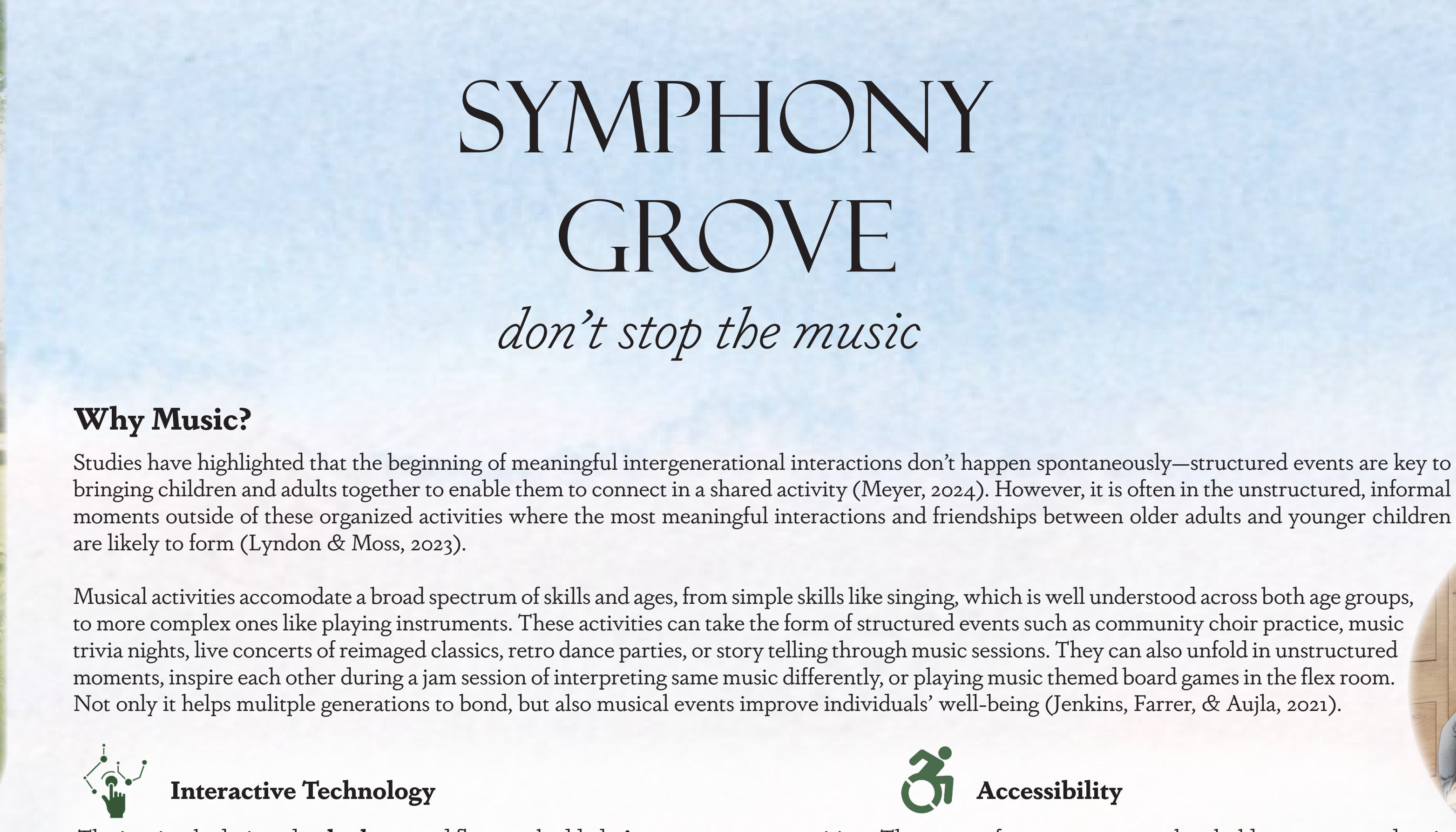


BIG GATHERING SPACE



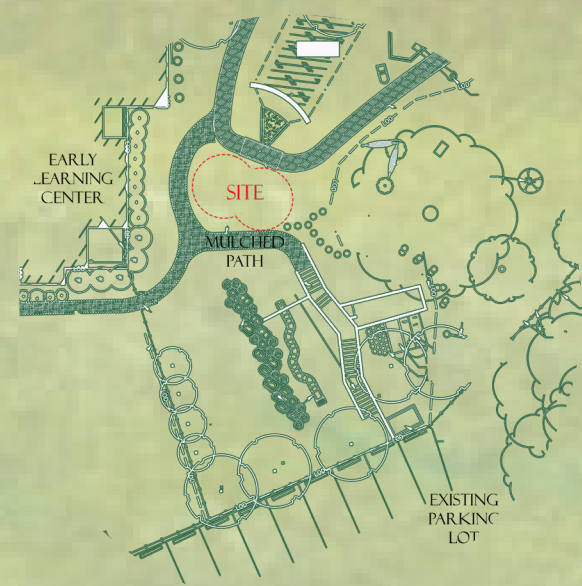
FACE-TO-FACE BONDING

FLEX ROOM

Design Concept

Our intergenerational space features a circular infinity-inspired shape where two circles are colliding and coexisting together, one signifying young and another old. The focus was to create a space that bridged the gap between generations using music. Wide, level surfaces ensure easy navigation, while soft textures, and garden views enhance sensory engagement. Thoughtfully placed seating invites conversation, and interactive instruments captivate younger visitors without disrupting the tranquility. This inclusive design encourages exploration, reflection, and connection, providing a harmonious environment where all ages can coexist and thrive.

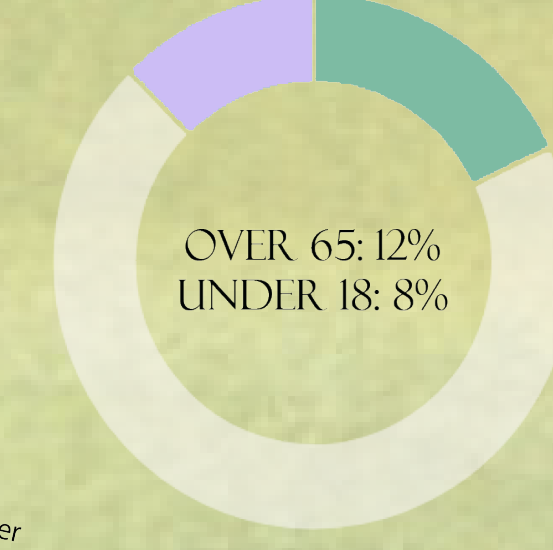
Site



SITE DIAGRAM



NEARBY FACILITIES



DEMOGRAPHICS

Narrative

We considered how a local family within walking distance of the site would like to use this space intergenerationally, specifically grandparents and their grandchildren. This intergenerational space uses interactive instruments to help unite generations through music – whether it is producing or enjoying it. The space features a hanging xylophone, interactive piano steps, and an audio waveform visualization tool, which displays amplitude changes over time for live music performances. The wooden sculpture creates a shady spot for children to play and observe. Curved benches create a small auditorium-like environment for performances and offer a place to sit and rest.

The area features a zero-threshold entry and exit, non-slip concrete pavers for stability, pour-in-place-rubber flooring to soften a potential fall, as well as walkways that are shaded for thermal comfort. The wood used from Vintage Lumber is reclaimed and therefore recycled for this project. The wood and stone are both sourced from local companies with strong ethical and sustainable construction and mining practices.

SYMPHONY GROVE

don't stop the music

Why Music?

Studies have highlighted that the beginning of meaningful intergenerational interactions don't happen spontaneously—structured events are key to bringing children and adults together to enable them to connect in a shared activity (Meyer, 2024). However, it is often in the unstructured, informal moments outside of these organized activities where the most meaningful interactions and friendships between older adults and younger children are likely to form (Lyndon & Moss, 2023).

Musical activities accommodate a broad spectrum of skills and ages, from simple skills like singing, which is well understood across both age groups, to more complex ones like playing instruments. These activities can take the form of structured events such as community choir practice, music trivia nights, live concerts of reimaged classics, retro dance parties, or story telling through music sessions. They can also unfold in unstructured moments, inspire each other during a jam session of interpreting same music differently, or playing music themed board games in the flex room. Not only it helps multiple generations to bond, but also musical events improve individuals' well-being (Jenkins, Farrer, & Aujla, 2021).



Interactive Technology

The intuitively designed **xylophone** and floor-embedded **piano** opens opportunities for play and imagination. The playful infinity loop-inspired **sculpture** offers children a hidden space to share secrets. The combination of above offers flexibility and adaptability, which are important elements of intergenerational space (Nelischer, & Loukaitou-Sideris, 2023).



PLAY SCULPTURE

PIANO KEYS

SPONTANEOUS JAM SESSION



Accessibility

The space features a zero-threshold entrance and exit, and wheelchair maneuverable rubber and concrete flooring, accommodating people of all abilities and ages.



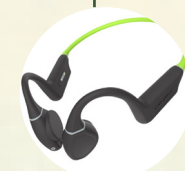
Safety

The soft rubber **flooring** in the central area allows kids to play without worry or discomfort. **Handrails** are provided in spots where individuals can sit and rest as needed.



Natural Elements

The space is framed by **native**, bee-friendly greenery on the ceiling wood slats and seating. Most building materials, including wood and stone, are sourced **locally** to further integrate the space with its natural surroundings. It is also located inside a loop of paved walkway, which offers a wide range of activities.



Inclusivity

The **sensory wall**, featuring rough stone textures, offers a tactile experience for all visitors. A music waveform **visualizer** helps individuals with hearing impairments engage with the music, while the flex room is equipped with bone-conduction **headphones**, allowing users to enjoy a personal music experience.

References

- Biggs, S., & Carr, A. (2015). Age- and Child-Friendly Cities and the Promise of Intergenerational Space. *Journal of Social Work Practice*, 29(1), 99–112. 10.1080/02650533.2014.993942
- Creating Meaningful Interactions for Young Children, Older Friends, and Nursery School Practitioners within an Intergenerational Project - ProQuest. Retrieved from <https://www.proquest.com/docview/2785484327/fulltextPDF?parentSessionId=yP45zoZaww2YYIoshKMWX%2BkwxyuluKcot9EuMLy2QZk%3D&pq-origsite=primod&accountid=27975&source=Scholarly%20Journals>
- Jenkins, L. K., Farrer, R., & Aujla, I. J. (2021). Understanding the impact of an intergenerational arts and health project: a study into the psychological well-being of participants, carers and artists. *Public Health*, 194, 121. 10.1016/j.puhe.2021.02.029
- Meyer, J. . Intergenerational Park Design for Active and Engaged Communities. Retrieved from <https://research.qut.edu.au/designlab/projects/intergenerational-park-design-for-active-and-engaged-communities/>
- Nelischer, C., & Loukaitou-Sideris, A. (2023). Intergenerational Public Space Design and Policy: A Review of the Literature. *Journal of Planning Literature*, 38(1), 19–32. 10.1177/0885412222109217



Outdoor Materials



Soft Rubber Flooring
gentler on the body if someone falls



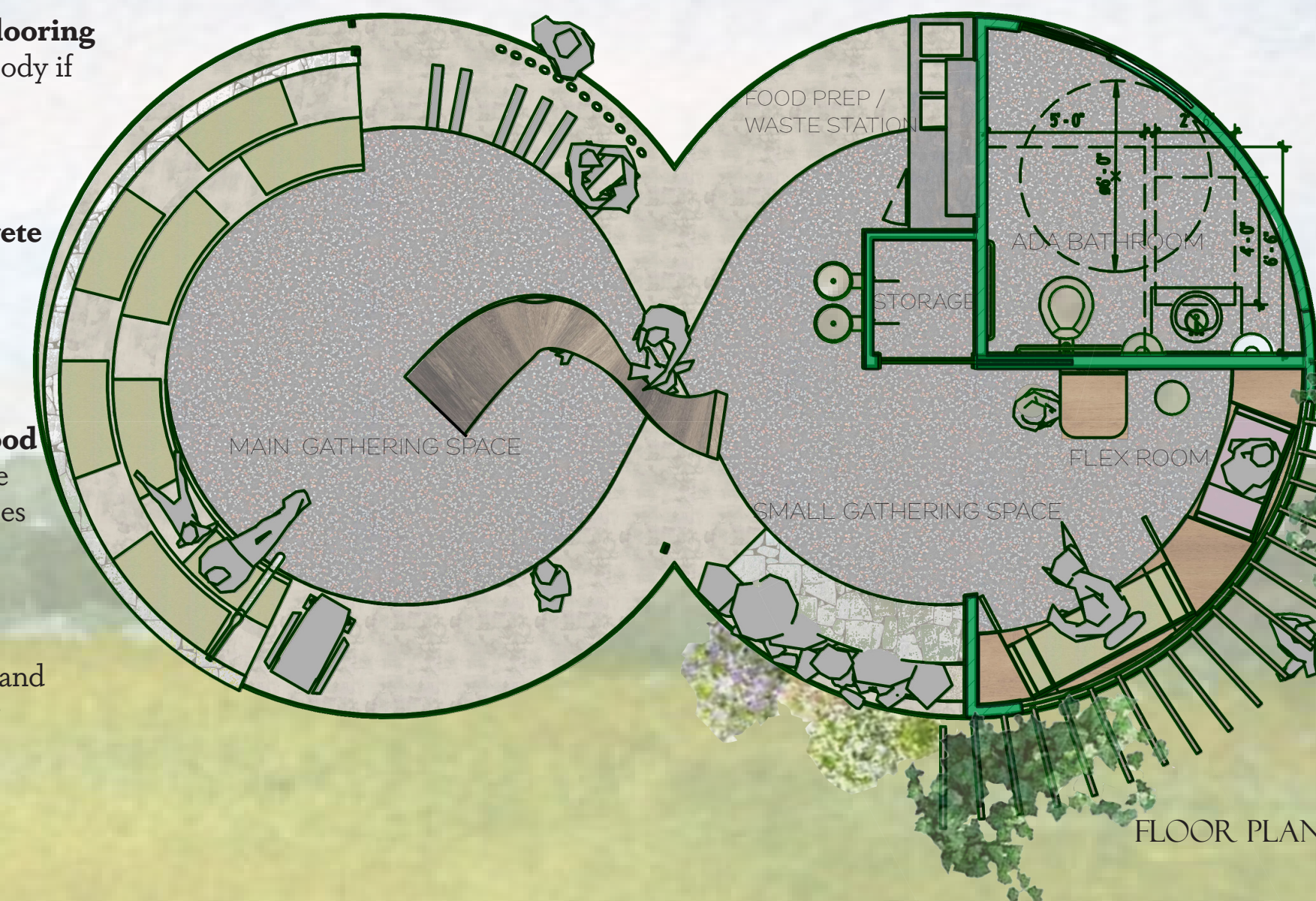
Smooth Concrete Flooring
non-slip



Reclaimed Wood
from sustainable business practices

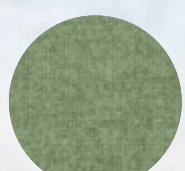


Stone Wall
locally sourced and satisfies sensory stimulation

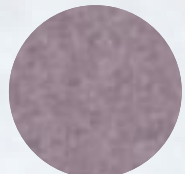


FLOOR PLAN

Textiles



Sage Green
from greenery



Purple
from native plants

Native Plants



Oxeye Daisy



Bee Balm



Golden Aster



Muhly Grass



LIVE CONCERT - REIMAGED CLASSICS